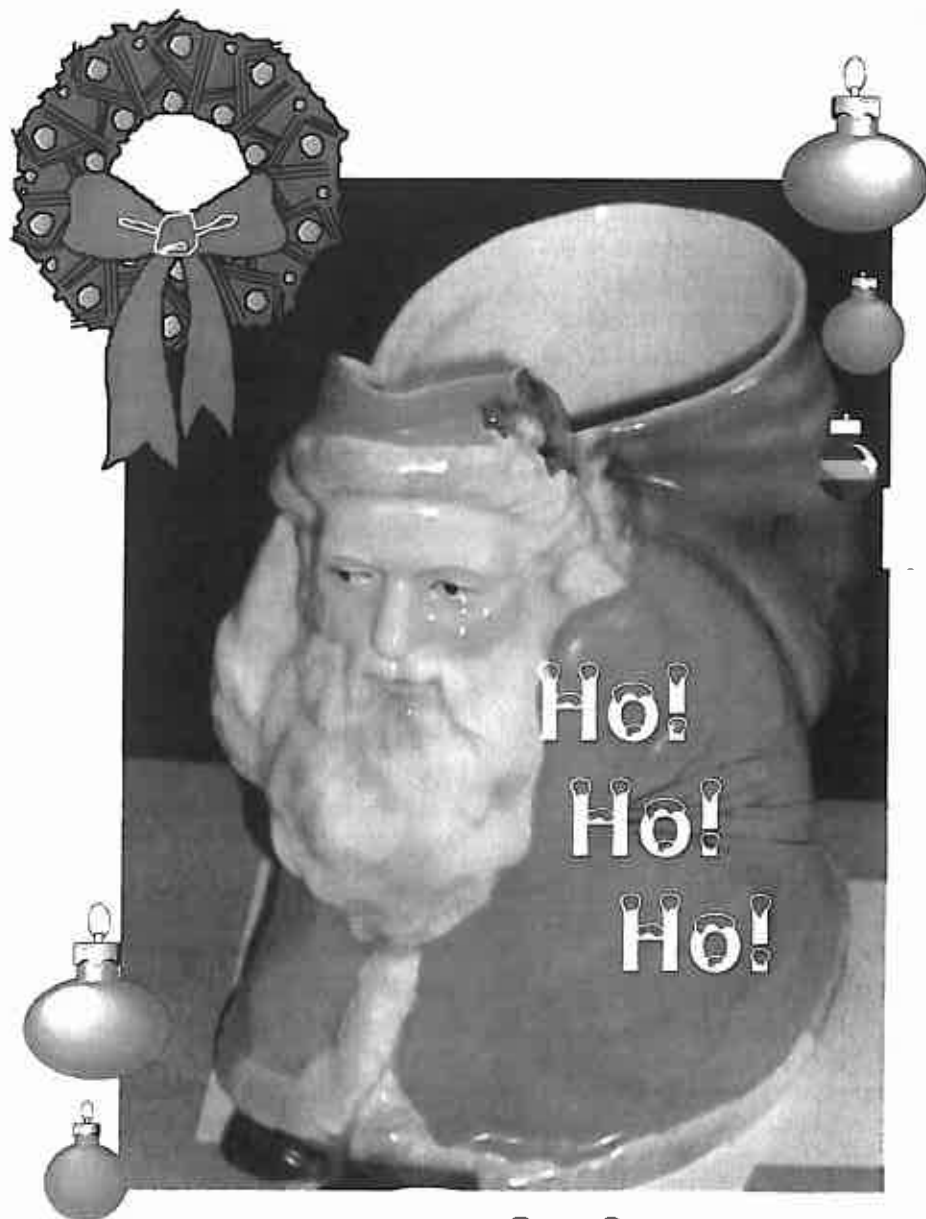




Royal Bayreuth  
Collectors Club

Volume 6, Issue 13

December 2002



Merry Christmas  
and  
Happy New Year

## **INSIDE. . .**

President's	
Message .....	2
From the Secretary .....	3
From the Editor .....	3
Letter from the	
Indianapolis Marriott ....	4
Minutes from	
the meetings .....	5 - 9
1994 Prices .....	7
Restoration Program--	10
2003 California	
Get-Together .....	10
Tornado Warning .....	11
Room Viewing .....	12 - 13
Convention Auction	
Session 1 .....	14 - 15
Session 2 .....	16
Show & Tell .....	17
Ice Cream Social .....	17
Ebay Prices .....	18
2002 Club	
Auction Review .....	19
Collecting	
Royal Bayreuth .....	19
Convention 2003 .....	20
Clum	
Auction Results ---	21 - 24
Treasurer's Report .....	24





## Royal Bayreuth Collectors Club

### President:

BOB McCASLIN  
6887 Black Oak Court East  
Avon, IN 46123  
317-272-7776  
maryjack@indy.rr.com

### Vice President:

BEV BRUMBAUGH  
501 E. Summer St.  
Northfield, MN 55057  
507-645-5382

### Treasurer:

SANDY HEERHOLD  
808 Black Walnut Dr.  
Sugar Grove, IL 60554  
630-466-7601

### Secretary:

MARY McCASLIN  
6887 Black Oak Court E.  
Avon, IN 46123  
317-272-7776  
maryjack@indy.rr.com

### Executive Board of Directors:

#### JOANNE LUNDQUIST

26032 Buena Vista  
Laguna Hills, CA 92653  
949-643-2833

#### ALVIN CAPPEL

830 Laurel Ave.  
Ashland, OH 44805  
419-289-2493

#### JOELEN PASSOW

1705 Lake Nokomis Dr.  
Humboldt, IA 50548  
515-332-2265

#### JUDY WHITE

1445 Caminito Acento  
LaJolla, CA 92037  
858-456-6293

#### TERRY ANDERSON

1734 Telemark Drive  
Rockford, IL 61106-6614  
815-397-4189

#### CRAIG HEELEY

1132 Spruce  
Sidney, OH 45365  
937-498-9795

### Historian:

#### JUDY STOCKWELL

45 Concord Street  
Petersborough, NH 03458  
603-924-3539

### Editor:

LINDA TITUS  
P.O. Box 983

Durant, IA 52747-0983  
563-785-4438 Fax 563-785-4673  
imagesinink@iowatelecom.net

## President's Message

By Bob McCaslin, RBCC, Inc. President

### A Look At RBCC 2002...

Let's start by expressing our disappointment and apology for the various substandard services that our club received from the Indy Marriott. (Please note the letter from Lisa Howe of the Marriott that is in this newsletter.) Many times in today's business world, the level of acceptable service does not matter to the management. Even though they were unable to correct some of the mistakes at the time, they wrote off \$750.00 in room charges, because of less than contracted room occupancy by RBCC. We contracted 140 rooms for three nights, and we needed to occupy at least 112 of them to meet the minimum number before being charged \$750.00 for activity space. The Marriott count for RBCC was only 103 rooms, leaving us nine short. The Marriott waved the \$750.00 charge.

Our members were scattered from 1st floor through the 5th floor. The management gave our reserved rooms to the D.A.R. members that were in Indy at the same time. Marriott offered one of our members a free night in their effort to make amends.

The lunches on Friday and Saturday went well, and we have asked the Collins Plaza for this same service in 2003. Apology to those that had to wait an extra 45 minutes for their banquet meals. Mary turned in the correct number on Thursday, but mix-ups do happen, so those members were to receive a deduction from their hotel bill.

A big "WELL DONE" goes to your RBCC Auction Committee for a well-planned, and well-organized job on the club auction. The 142

pieces were turned in and inspected by them and proved that by starting on Wednesday, the extra day allows them to do it in an orderly manner. The quality of the items were equal to previous years and sold at a higher average per piece than in 2001.

A super job by Becky Conrad and her hard working crew in the Hospitality Room. A few moves had to be made and were done in an orderly manner, also.

Dianna Tindell's program on Restoration was in progress when we were told to leave that area and move to the east side of the Marriott. A severe tornado was in our area, in fact, the LaQuinta Motel just east of us, was hit and had much damage. Our members on the second, third, fourth, and fifth floors were called to go to the ground floor. Luckily no damage or injuries to our building or members.

We look forward to our 2003 Convention at the Collins Plaza Hotel in Cedar Rapids, Iowa, on September 23 through September 27. I hope you can plan your vacation or at least get some time off to attend in 2003. It will be another good one, especially to see old friends again and talk Royal Bayreuth!

Best Wishes,  
Bob





## Secretary's Message

Mary McCaslin



Summer is over, fall weather is here, and winter is just around the corner. I hope you all have a very good and

peaceful Christmas Season! Time sure does fly!

We have four new members since our October Convention. We have formed a Membership Committee, made new applications to be handed out, and feel that this will help attract more collectors. Let's all help Linda, Joanne, and Ida with this project.

A good convention was enjoyed by all attending, and we look forward to another beautiful facility in Cedar Rapids, Iowa next year. It is understandable that not all members can attend the conventions, but by having them in different parts of the U.S., it may be convenient for you to attend

sometime in the future. I do hope that you enjoy reading about them in our newsletter. It is our goal to make them interesting, informative, and giving you an opportunity to join in by writing articles, etc.

There are so many collectors in our great country and other countries that enjoy our hobby. It really is a small world with the internet and easy ways to travel. It is hard to comprehend the things that can be done via the internet.

If you have something to contribute to the newsletter or questions of any kind, please feel free to write me.

Again, have a very MERRY CHRISTMAS SEASON!

P.S. 2003 dues are due January 1st. Any changes in your address, email, etc., please contact me so that it will be included in the 2003 roster. Thanks!

*Mary*

## From the Editor

Linda Titus

It seems such a long time ago that we were in Indy at convention! Time really flies, doesn't it? We really had a great convention and this newsletter is chock full of stories, photos, and minutes from the meetings of convention.

Enclosed in the newsletter is our new brochure. The membership committee is working hard at recruiting new members and it is hoped that the brochure will be a good tool for this goal. We encourage members who get out to shows and auctions to bring some brochures to set out. Please let me know if you need some and I will mail you a bundle. I sent some to Clum's Auction and I understand that we picked up a couple of members from that sale.

Recently I was getting ready to take a photo of a vase I bought at convention last year. One of our members remembered that I bought it and asked me if I wanted to sell it, but wanted to see a photo of it. Well just as I was going to shoot the photo, along comes Lucy, my calico cat. She was very adamant about being in the photo, so I gave up. Here she is, the little ham. Looks like she is describing the vase!

Thanks to those who submitted articles. Keep 'em coming! The person who sent the article on the 1994 Woody Auction, let me know who you are so I can give you credit. Happy Holidays to all!

*Linda*

## Hospitality Room







Indianapolis Marriott

1202 East 21st Street  
Indianapolis, IN 46219  
317/552-1234

9/28/02

Mr. Bob McCaslin,  
ROYAL BAYREUTH COLLECTORS CLUB  
6887 Black Oak Ct. East  
Danville, IN 46122

Dear Bob,

Thank you for bringing your Convention back to the Marriott on Sept. 15<sup>th</sup> - 20<sup>th</sup>. On behalf of all of the associates at the Indianapolis Marriott East, please accept my apologies for the problems, which occurred during this year's Convention. The service level you received is not representative of our staff. In an effort to explain...not in anyway to excuse...the events that took place, I am writing to you and to your Board of Directors.

The problems blocking all of your rooms together did not have to occur. Poor communication between Departments as well as lack of training with some new personnel is primarily to blame for our inability to accommodate your requests. I am astonished because this kind of mix up does not happen at the Indianapolis Marriott East. The Tornadoes that struck on Friday also added to the confusion. I understand that there was a real sense of panic as we evacuated people into Liberty Hall. We also had difficulty getting some staff in due to damage they experienced at their homes.

The Restaurant problems have been addressed with the Manager, Pina Cento. She has asked us to extend her apologies for the long wait for food. Short staffing was the main contributor to this problem. I am truly sorry that several of your guests complained about the wait. Again, this is not typical of our Marriott.

Finally, I am so sorry that I could not be in town during the Convention. As you were aware, my brother adopted a baby girl from China. When they got the call from the Agency they had no control over the timeframe. I had the hotel on alert that "the call" would come in during either mid September or October. Of course, they would need me from 9/10 - 9/21<sup>st</sup>! I must admit that I was concerned about not being there but our staff always exceeds the expectation of our meeting planners. I am so sorry that, this time, we did not achieve our goal.

Thank you for your patronage, but mostly I thank you for your understanding during our phone conversation this week. To confirm that conversation, please accept a complimentary Board Meeting at our facility. If the situation enables you to meet in Indy, we would very much like to welcome your Board of Directors back for a meeting and lunch on us. I am also following up with Mr. & Ms. Crabbe to offer a free night's stay certificate. I was so distressed to hear that they received sub-standard service through the front desk. I hope that we can bring them back and show them our true level of service.

If you have any questions or if I can be of any assistance to you in the future, please Do not hesitate to call. Again, thank you for your understanding. ☺

Warm Regards,

*Lisa*  
Lisa C. Howe  
Dir. of Marketing

.....



## Board of Directors Meeting - 2:00 p.m. Thursday, Sept. 19

Bob McCaslin opened the first Board meeting by thanking Judy Stockwell and Harriett Land for their contributions to the Club. Both directors are ending their terms of office.



Bob announced that plans for the 2003 convention at Collins Plaza in Cedar Rapids, Iowa have been finalized.



Possible sites for the 2004 and 2005 conventions include the Radisson in Columbus, Ohio, Windham Suites in Itasca, Illinois, and the Johnson & Wales University Hotel in Providence, Rhode Island. Memphis and Atlanta are two additional cities under consideration.

Bev Brumbaugh reported that the quality of items in this year's auction is quite good. Each consigner was asked to check pieces carefully prior to submission, and the auction committee found very few flaws as a result. Bev indicated that it worked better this year to jury items beginning on Tuesday as pieces were brought in. This reduced the chaos that resulted when people had a limited time for auction check-in.



Judy White asked how members will know when an item is actually sold to a new buyer since owners are allowed to bid on their own pieces this year (instead of establishing a reserve price). Answer:

You won't, unless you keep track of bidding numbers.

Sandy Heerhold asked how absentee bids would be handled this year. Answer: If you agreed to bid for someone who was not present at the auction, you could take the piece home and collect the money from the buyer when the piece is delivered. You will be held responsible for the item during transportation. If it breaks, you must cover the cost. Bev added that we need new rules on absentee bidding since this procedure is not spelled out.



Additional auction information clarified:

- A private room for viewing auction items is needed at all conventions.
- The auction brochure needs to contain clearer descriptions of pieces.
- The owner of each auction item is handing his/her own reserves. The \$10 no-sale fee is still in effect if the owner buys back his/her own piece.

Mary McCaslin reported that we lost 34 members last year in spite of numerous reminders and letters. 2002 membership stands at 183. Mary indicated that we need more material for the newsletters to increase membership. She plans to send out letters to all members who dropped out asking what the Club could do to get them interested again.

Sandy Heerhold reported the balance in the treasury: \$18,420.46. Judy White motioned and JoAnne Lundquist seconded to have Alvin Cappel and Jack Biddlecome audit the books. The motion carried.

Tim Sullivan reported on the Royal Bayreuth Collectors Club website. His son has completed the framework, but Tim questioned the wisdom of getting the website up and running. Only \$125 has been spent



so far on URL fees, but Tim brought up four points against continuing this project:

- Most Club members are older than typical Internet users.
- Tim agreed to work on the website only during the first year. Who will take over after that?
- Websites have not been doing very well lately. Tim pointed out that his own website used to generate 100 hits per week. Now he gets only 2 to 5 hits per week, even though he has links to other sites and has priority on several major search engines.
- The money allocated toward this project may be better spent elsewhere.

After some discussion, Directors re-authorized the continuation of the website project. For those who wish to see the website set-up so far, the address is [www.royalbayreuthcollectorsclub.com/demo](http://www.royalbayreuthcollectorsclub.com/demo). Tim requested information for the site: President's Message, Secretary's information on joining the club, etc. Linda Titus will provide information on conventions past and present.

Linda also suggested that Board members be required to submit at least one newsletter article per year. Articles were assigned last year, but several Board members failed to follow through. A sign-up sheet was passed around so that each Director could select one of four newsletters.





Judy Stockwell will stay on as Historian of the Club. She will also continue to handle



advertising as well as report on eBay prices in the newsletter. She needs more photos and articles for the Club album.

Bev Brumbaugh asked if each member could have an approximate accounting of the Club's financial status. Directors felt that the beginning balance, expenditures, and ending balance should appear in each newsletter. Harriett Land made a motion to that effect. JoAnne Lundquist seconded, and the motion passed.

Under New Business, Judy White handed out copies of a rather derogatory article that had appeared in the *Antique Weekly*. The article stated that collectors who bought Royal Bayreuth should do a reality check because prices and desirability were plummeting. Mary McCaslin and Judy White will collaborate on a response to this article.

Judy Stockwell announced that the Nominating Committee planned to recommend Craig Heeley, Terry Anderson, and JoAnne Lundquist



as Club Directors. Additional nominations will be accepted from the floor during the regular business meeting. Judy also asked Board members to consider selecting a Club member to send flowers or food to members on special occasions (50<sup>th</sup> Anniversary, extended illness, hospitalization, death of a close family member, etc.). This will be suggested at the business meeting.

Bob McCaslin adjourned the meeting at 3:27 p.m.



## Welcome Meeting - 9:00 a.m. Friday, Sept. 20

President, Bob McCaslin, welcomed members to the Indianapolis convention. He apologized on behalf of the Marriott for members who were assigned rooms away from the majority of the group. He introduced Ann Heeley, Recording Secretary, and Ida Parrot, Parliamentarian.



On the agenda for this convention:  
— DiAnna Tindell presenting a program on china restoration at 1:00 today  
— Auction preview at 3:30 (thanks to Bev Brumbaugh and the auction committee)  
— Hospitality Room in the Harrison-Wilkie Room (thanks to Becky Conrad and the hospitality committee)  
— Lunch Friday and Saturday in the Hospitality Room and its adjoining room  
— Auction at 7:00 p.m. in the Welcome Room

Bob announced that the 2003 convention will take place at Collins Plaza in Cedar Rapids, Iowa from September 23-27. Collins Plaza is accessible from I-80 to 380N. It is about a 3-hour drive from the Minneapolis airport. Cedar Rapids has a small airport. Other nearby airports include the Des Moines and Quad Cities airports.

The election of Board members will take place during the Saturday business meeting. Judy

Stockwell, Harriett Land, and JoAnne Lundquist are ending their terms. Judy

will continue as club Historian. She has also agreed to continue submitting ads in antique publications. Nominations for the three Board openings: Terry Anderson, Craig Heeley, and



JoAnne Lundquist. Linda Titus will continue as Newsletter Editor, and Board members have agreed to submit monthly articles. All members are asked to contribute articles, photos, and items of interest.

Several members questioned whether the Club planned to respond to the article in the *Antique Week*. Bob informed members that Judy White and Mary McCaslin were drafting a response to this article. Bob also asked for input on future convention sites and ways to increase membership.

The highlight of each convention, Show and Tell, followed the Welcome Meeting.

### Becky Conrad:

(all Sunbonnet pieces, of course!)

- stick-handled pitcher with new lid
- marmalade
- urn with lid
- reticulated, footed vase, 4"
- triangle-shaped toothpick
- covered, round pin box, footed
- creamer with pinched, rectangular spout
- 3-handled vase with narrow top
- short, round vase with reticulated top
- 6-inch bowl with a hole on one side
- salt and pepper shakers



Bev & Bobby Jo Brumbaugh:

- unmarked, incised sugar and creamer; sugar has red pinecones and tree bark; the pinecones on the creamer are a different color; pieces are consecutively numbered; creamer is iridescent
- footed bowl with applied strawberries and vines; purchased on eBay
- large open-handled tray with nymph (new) purchased at the RB factory; pattern is "Daphne"
- new cup and saucer in the Daphne pattern

Judy Stockwell:

- unmarked, numbered 8-inch bowl with little girl holding a basket; smaller images around the bowl of the same girl
- unmarked crow creamer; numbered and pearlized; crow has monocle, brown vest, and bow tie
- yellow lithopane mug, raised girl on outside of mug
- yellow cup and saucer marked "Berlin" and Tettau" with T mark
- round bowl with Dutch boy; odd marks
- man's tan high-top slipper (CJ also sent Judy a computer-enhanced version of this piece with added detail)

Chuck Heerhold:

- horse creamer; "Germany" on bottom and "T" on side; brown, 6" tall with blue saddle
- oyster and pearl salt and pepper with gold/orange tops
- square card, no devil, cup and saucer; cup has green mark; saucer has gold mark; both are inscribed "Steero" (a bouillon company); card design is of king of clubs

Linda Nelson:

- monkey cigar snuffer or candleholder; brown; unmarked

Karen Church:

- rectangular soap dish with sand babies
- Jack and Jill egg cup
- miniature cup and saucer, 1" tall with hunt scene; unmarked
- wall pocket shaped like a window with a little girl looking out the window; unmarked

Harold & Nancy Brandenburg:

- Lacrosse shoe with ankle protectors; marked "Stevens, the Boot Company;" has pull-up tab in back; bottom of shoe is ridged; dress toe; high top with holes for laces (different from CJ's hockey shoe)
- hand-painted ivory tankard with rooster or pheasant; lots of extra painting and gold décor
- lettuce leaf creamer with raised butterfly on the side; unusual mark under glaze; heavier than normal

Sam & Judy Breese:

- marked Tomato reamer
- silver-top vase; marked on the side rather than on the bottom "Royal Bayreuth China - Made in Germany"
- Man in the Mountain creamer with "Made in Japan" sticker
- Asian lady humidor with lid (similar to Arab head humidor)

Mary McCaslin:

- Pear cruet, possibly for vinegar; marked; glazed cork stopper

Craig & Ann Heeley:

- miniature shaving or scuttle mug with hunt scene
- miniature puzzle mug, shaped like pitcher, with hunt scene



The Welcome Meeting and Show and Tell session ended at 11:30.

## Woody Auction Results from 1994

A large collection of Royal Bayreuth wall match holders fired up bidders at a Woody Auction in St. Louis, Missouri. The top lot, a Devil and Cards "full body" match holder, sold for a sizzling \$1800. Other hot figurals were a Black Crow, \$1400; a Rooster \$1400; an Eagle \$1300; and a Chimpanzee \$1250. More common figural match holders sold for more moderate prices. A tomato brought \$230; an apple \$450; a red poppy \$375.

Scenic match holders in the auction included a Hunt Scene \$110; Fishing \$200; Cows in Pasture \$200; Desert \$175; Man with Donkey \$175; Musicians, double pocket \$275; Man in Boat Fishing \$200; Hunt, three dogs with man and horse \$180; Sheep \$220; Fox Chase, double pocket \$225; Hunt scene with woman and horses, double pocket \$325; Goose Girl \$275; Goats Grazing \$200.

Tapestry holders: Three-color roses \$350; Lady portrait \$300; Musicians \$250; and Castle \$325. Other designs: Beach Babies \$220; Snowbabies \$275; Pelicans \$275; Jester \$350; and Storks \$275.



Mountain Goat, \$525; Eagle, \$1,300; Chimp, \$1,250; Elk, \$375.



Black Crow, \$1,400; Yellow Poppy, \$390; Pearlized Poppy, \$500; Red Poppy, \$375; Oyster and Pearl, \$700.



Royal Bayreuth hanging match holders, left to right: Rooster, \$400; Devil and Cards, \$350; Devil and Cards full body, \$1,800; Santa, (inlaid inside pouch), \$1,050.



Red Clown, \$400; Green Shell, \$125; White satin Shell, \$200; Pearlized Clown, \$600.



## *Business Meeting - 9:00 a.m. Saturday, Sept. 21*

Attending a Royal Bayreuth Convention for the first time were Carol and Tom Kapheim from Wauconda, Illinois. Carol is a librarian and drama teacher. Tom is an artist and art teacher.



Becky Conrad thanked Hospitality Room committee members Bob Gollmar, Janet and Alan Belcher, Karen and Carolyn Church, Karl and Ebbie Kolter, Harriett Land, Judy White, and Art Ward. A total of \$450 was spent on all hospitality items this year.

Bev Brumbaugh thanked members of the auction committee for their assistance this year: Roger and JoAnne Lundquist, Alma Biddlecome, Craig Heeley, Chuck Heerhold, and Bobby Jo Brumbaugh.

Bev motioned to accept the Secretary's Minutes as printed in the most recent newsletter, and Alma seconded. The motion passed. Secretary Mary McCaslin announced that there were 76 registrations for this convention.

The Club had 200 members in 2001 and



185 members in 2002, a slight decrease. California, Ohio, Pennsylvania, and Illinois all have memberships in the double digits. We lost 34 members between September, 2001 and September, 2002 and gained 20 new members. Chuck Heerhold asked if anyone on the Board could contact those 34 members so that the Club could figure out ways to avoid losing members and develop strategies in gaining new members. Mary McCaslin agreed to send out letters.

Sandy Heerhold, Treasurer, announced that

as of August 31, 2002, the Club's total account was \$17,413.55. Jack Biddlecome and Alvin Cappel audited the Club's books and verified this figure. Tim Sullivan made a motion to accept the auditors' report. Becky Conrad seconded, and the motion passed.

Bev Brumbaugh reported that the auction rule changes have resulted in



positive feedback. Suggestions on absentee bidding and telephone bidding were taken into consideration, and information on these items will appear in the next newsletter.

Bev asked members

to continue to contact him for suggestions or questions. Everyone agreed that auctioneer, Rollie Rosenboom, did a great job, and the new "bid-your-own-reserves" rule seemed to work well. 43% of the items auctioned were returned to their original owners.

Linda Titus, newsletter editor, asked members to please send in pictures and newsletter items. Members don't even need to compose an article—Linda can write it based on information sent in. Bob Gollmar thanked Linda for the quality of recent newsletters and for the print materials for the convention. Bob McCaslin reiterated that all members, not just Board members, should submit articles and photos for the newsletter. H.L. Edwards suggested that a copy of the next newsletter be sent to the 34 members who dropped out of the Club.



Tim Sullivan reported on RB website progress. He indicated that the framework and "buttons" are in place, and

soon we will have photos, membership information, historical information, articles, and convention news. A preview of the website framework can be seen at [www.royalbayreuthcollectorsclub.com/demo](http://www.royalbayreuthcollectorsclub.com/demo) or by clicking a link button at the parent website, [www.locustcreek.com](http://www.locustcreek.com). Links to other Bayreuth sites will be added.

Room visitation hours were announced, and Judy Stockwell, Historian, reminded members to send in articles and photos for the Club scrapbook. The scrapbooks will be on display in the Hospitality Room during room visitation.

Under New Business, election of officers was the first item. Candidates for Directors were Terry Anderson, Craig Heeley, and JoAnne Lundquist. After three calls for additional nominations, Chuck Heerhold made a motion to accept the initial slate. Bev Brumbaugh seconded the motion, and it passed. A discussion of elections ensued and included a recommendation to have at least two people running for each open position. Judy White will chair the nominating committee for next year.

Chuck Heerhold described Wyndham Suites in Itasca, Illinois as a possible convention site for either 2004 or 2005. It is about 15 minutes from O'Hare airport and easily accessible by interstate highway as well. Wyndham Suites have recently undergone remodeling and many rooms are similar to Embassy Suites. The average price

for these rooms is \$99, and the convention would have access to a reception party room and Sunday brunch at no extra cost.

Steve Bartlett looked into sites available in



Rhode Island, which are generally more expensive than those in the Midwest. He recommended Johnson & Wales University Hotel in the Providence/Newport area. Rooms average about \$100, but meeting rooms would be extra. Johnson & Wales University is a culinary arts school, so the food would be beyond wonderful. A cruise on the Narragansett River could replace the traditional ice cream social to give convention attendees an opportunity to see the area. Judy White suggested that specific information and definite pricing be obtained so that Johnson & Wales could be considered for the 2005 or 2006 convention. Harriett Land also volunteered to obtain similar information for the Memphis area. Bob Gollmar made a motion to accept Wyndham Suites for the 2004 convention. Al Friedrich seconded the motion, and it passed.

Bev Brumbaugh reminded members that there would be no reserves on the Davis collection to be auctioned later today. He made a motion to waive the club fee; Chuck Heerhold seconded the motion, and it passed.

Bob Gollmar made a motion to retain the current dues structure at \$30 per year. Judy White seconded, and the motion passed.

A discussion followed regarding how to gain new members for the Club, how the Club should handle large Treasury balances, and why programs for learning more about RB at each convention were important components of the weekend agenda. Carol Kapheim volunteered to help schedule programs for future conventions.

Becky Conrad moved to adjourn the Business Meeting; Chuck Heerhold seconded, and the motion passed. The meeting was adjourned at 10:55 a.m.



## Board Meeting - 3:00 p.m. Saturday, Sept. 21



New Board members were

welcomed: JoAnne Lundquist, Craig Heeley, and Terry Anderson.

Bev Brumbaugh related suggestions he had received from members regarding the auction, particularly absentee bids. He will draft new rules on absentee bids for Board approval. The rules will likely include a proposal on absentee bidders providing some form of payment prior to the auction. Phone bids will not be accepted. Other suggestions: separate bidding cards for absentee bidders; items returned to the table as "no sale" should be placed in bidder number order. Board members agreed that the auction check-in worked much better this year, and that check-in next year should also begin on Wednesday.

Bob Gollmar will check into the

Cedar Rapids site for next year as to



whether the Hospitality room can be used for check-in. A regular room could be used, but it must be secure.

Sandy Heerhold reported on the results of the Davis auction. She agreed to provide quarterly Treasurer's reports that will be published in each newsletter beginning with the December issue. Mary McCaslin reiterated that she and Judy White will write a response to the *Antique Week*. Mary will also write to the 34 ex-Club members and will include a new application and a copy of the newsletter. Mary will send invoices with dues payable and a roster update no later than Jan. 31. Linda Titus will publish the roster in the March newsletter. Each newsletter will contain the names of new Club members.

With Wyndham Suite, Itasca, Illinois approved as the 2004 convention site,



Board members discussed future sites for 2005 and beyond and who would be obtaining specific information:

— Johnson & Wales University Hotel in Providence, Rhode Island (Steve Bartlett and Judy Stockwell)

— Memphis area (Harriett Land)

— Radisson Inn in Columbus, Ohio (undecided)

— Lexington area (Bob McCaslin)

The advisability of organizing a membership committee was discussed next. Board members agreed that we need new ideas, flyers for various antique shops and malls, and a better designed informational brochure. Linda Titus agreed to design the new brochure. Rolie Rosenboom, Carol and Thom Capheim, JoAnne Lundquist, and Linda Titus will join forces to work on these issues.

Since members had expressed an increased interest in programs during conventions, Board members were selected to either present or be responsible for scheduling learning programs:

— 2003 - Mary McCaslin and Becky Conrad

— 2004 - Craig Heeley and Judy White

Terry Anderson also suggested that convention attendees each bring a piece of RB with an unusual mark to share and discuss.

Board members agreed that having a closing Board meeting in the afternoon rather than after the Banquet was preferred. The meeting was adjourned at 4:15 p.m. (This was a record in terms of brevity.)

Respectfully submitted,  
Ann Heeley, Recording Secretary







## Program on China Restoration

by DiAnna Tindell  
and Judy White

DiAnna Tindell has achieved national recognition for providing information and services in the area of antiques restoration. She distributed a catalog, magazine, sticky-notes, and other materials associated with the work her company performs.



Her website, <http://www.tindellsrestorationschools.com>, shows examples of the types of restorations that can be done on china, glass, marble, frames, and many other heirlooms and collectibles. She has trained more than 400 people in the art of professional restoration.

DiAnna will be in Las Vegas in March, 2003, at a national Glass Expo, and is very excited at the prospect of instructing and learning from professional artists from all over the world. She told her Royal Bayreuth audience about the difference between repair and restoration: "You repair a cheap glass; you restore a valuable vase."

DiAnna also advised the group about MicroMart, a company that supplies decal blanks to reproduce Royal Bayreuth and R.S. Prussia marks. The reproduction, including false marks, of R.S. Prussia has been going on for the past 10 to 12 years, mainly in China.



## 2003 California Spring Get-Together Planned

Our dear, lovable Ida has planned some interesting things for us, but she has taken ill, so I am trying to fill some big shoes, and get some of the hotels/motels down.

Our plan this year is to meet on Tuesday and Wednesday in Santa Barbara. Whitney Newland is helping us to secure some hotel space that is not too expensive. As we left off he was going to check out some properties and let us know.

Whitney has volunteered (with a noose around his neck) to have an informal get-together at his new home in Santa Barbara and to let us (we hope) view his beautiful collection of Wavecrest.

Santa Barbara has some wonderful things to see and do as does the road up the coast. We thought it might be fun to leave Santa Barbara on Thursday morning and meander up the coast to Cambria and stay in the vicinity of Moonstone Beach.

There are many things to do along the way. But, the thought was that we might try to get to Cambria so that we could do the night tour at Hearst Castle. We felt that leaving Santa Barbara early on Thursday would give everyone a chance to stop along the way if they wished. The night tour is only on Friday and Saturday nights.

Solvang has a wonderful (but a might expensive) antique store and the little town is really cute. San Luis Obispo is a great place and home to Cal Poly...as a matter of fact, they have a downtown street fair every Thursday afternoon. On up the road there are many antique stores, especially in Morro Bay. Cambria itself is really a great town and fun to shop around in.

I have made numerous telephone calls, and it appears that using [hotels.com](http://hotels.com) on the internet at the Fogcatcher Inn is the

best deal. I also contacted them by email and they offered a \$150/night rate to us. But, after using [hotels.com](http://hotels.com) it appears that we could get a rate as low as \$119. This hotel has a full breakfast included. I did not check on the internet spot to see if they would take dogs, but in my email they said that they would for an additional charge of \$35. I don't know anything about dogs and the hotels we are looking at in Santa Barbara as of yet.

The Hearst Castle evening thing cannot be booked until 84 days before the date that you want to go. There is no choice for us—it must be March 21. The 84 day thing is only for groups of 12 or more, less than that you need to wait till 56 days. It appears that the cost is \$20/per person. However, they do not have the 2003 rate yet and it could go up. So, I plan on calling 84 days ahead the first thing in the morning. But, I must have 12 people committed to do it.

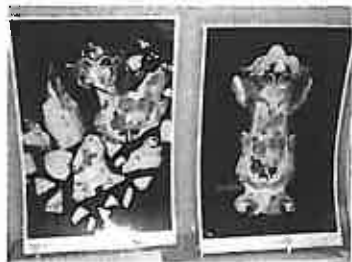
They also have day tours and anyone whom might like to also do that can book on the internet. I strongly recommend making reservations, as this has become a very popular place. The other tours are a lot of walking and you might want to book early in the morning on Friday or late in the day on Thursday. In my younger days I've done two tours in one day, one right after the other, and I was still tired.

As soon as we have more info about the Santa Barbara hotels we will let you know, but if anyone is interested in being included in the Hearst Castle night tour I would appreciate your advising immediately, as after we have made our group reservation you will be on your own to see if you can get on or not. Please let me know either by phone 949-643-2833 or email [lundquist@cox.net](mailto:lundquist@cox.net) no later than December 20.

Thanks,  
Joanne Lundquist



# Program Interrupted by Tornado Warning



DiAnna Tindell presented a program on restoration; reporting on techniques as well as a warning on the ease of applying fake marks on pieces.



During the program, hotel guests were asked to go to a large room for shelter from a tornado which ripped through Indiana.



## Waiting for the "all-clear"

Tornado rips through Indiana during the Convention; hotel guests and employees wait out the storm in one of the facilities large banquet rooms



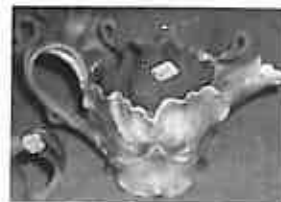
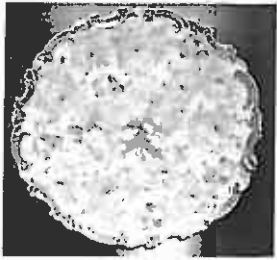


# Room Viewing





# Room Viewing





# Club Auction - Session 1

Friday, Sept. 20 - 7 to 11 p.m.





# Club Auction - Session 1

Friday, Sept. 20 - 7 to 11 p.m.



## Some Convention Auction Prices

Ewer Lady w/Shawl .....	\$ 55
Poodle Creamer .....	135
Hunting Scene .....	65
Oak Leaf Open Sugar .....	65
(2) Nut Cups Tapestry .....	75
Donkey Boy Platter .....	100
Rose Tapestry Wall Hanger .....	100
Lobster & Leaves Shakers .....	120
Sunbonnet Shield Candle Holder (Wed. Sgnd.) .....	300
Rose Tapestry Milk Pitcher .....	150
Small Pitcher Nursery Rhyme .....	150
Iris Creamer .....	650
Purple Lobster Sugar .....	1025
Cow in Pasture, 9" .....	200
Owl Humidor .....	1150
Portrait Plate, Lady Peering, 9 1/2" .....	110
Arab Candle Holder .....	100
Large Tapestry Basket w/Fluted Edges, 5" .....	275
Double Headed Rooster Sugar .....	500
Ladies Humidor Musicians, 5" .....	200
Sunbonnet Fluted Planter (Sun. Sgnd.) .....	275
Stag in Stream Bowl, 10 1/2" .....	350
Kewpie Lithopane Cup .....	450
Turkey Farmer Platter .....	200
Girl w/Candle Creamer .....	325
Pair of Ewers, Lady w/Horse, Tapestry, 3 1/2" .....	300
Open Poppy Creamer Wht. Satin .....	50
Big Mouth Fish Creamer .....	125
Dutch Girl Tall Candle Holder .....	50
Sunbonnet Fancy Pitcher (Sun. Sgnd.) .....	200
Tapestry Scenic Vase, 2 Handled "The Bathers" .....	100
Old Tettau 2 Cups & Saucers .....	50
Tapestry Maple Leaf, 5" x 5 1/4" .....	225
Platypus Creamer .....	600
Polar Bear Demi Cup/Saucer (Touch up on handle) .....	650
Hunter w/Raised Gun, 7 1/2" Water .....	200
Purple Lobster Celery .....	1300
Pitcher with Three Girls on a Park Bench .....	45
Monk Creamer .....	350
Portrait Vase Lady on Horse, 6 1/2" .....	100
Bull Creamer .....	85
Pear Creamer .....	250
Closed wing Butterfly W.P. .....	6525
Art Nouveau W.P. .....	2500
Rabbit Creamer .....	3500
Rose Tap. Floral Clock .....	1100
Brown Bear (scenic) 3 1/2" Pitcher .....	400
Parrot (handle) Milk Pitcher .....	500
Rose Tap. Powder Jar/lid .....	5257
Rose Tap. Small Basket .....	225
Coachman Humidor/lid .....	725
Poinsettia Dish .....	300
Strawberry Tea Pot .....	175
Art Nouveau Dresser Tray .....	825
Devil/Cards Plate .....	300
Lemon Sugar .....	175
Art Nouveau Candy Dish .....	950
Tomato Cracker Jar .....	600
Santa Claus W.P. .....	7100



# Club Auction Session 2

Saturday, Sept. 21 - 1 to 2:30 p.m.



## NOTICE NOTICE NOTICE!

**IF YOU  
NEED SOME OF  
OUR NEW  
BROCHURES/  
MEMBERSHIP  
APPLICATIONS TO TAKE  
TO SHOWS, AUCTIONS,  
OR TO ANTIQUE SHOPS  
AND MALLS, PLEASE  
CALL, WRITE, FAX, OR  
EMAIL ME AND I WILL  
MAIL A BUNDLE  
TO YOU.**

**WE URGE YOU  
TO HELP OUR  
MEMBERSHIP  
COMMITTEE  
WITH THE  
(SELF-INFLICTED) GOAL  
OF 20 NEW MEMBERS!**

**LINDA TITUS  
P.O. BOX 983  
DURANT, IA 52747  
563-785-4438  
Fax 563-785-4673**

**email:**

**[ImagesinInk@iowatelecom.net](mailto:ImagesinInk@iowatelecom.net)**

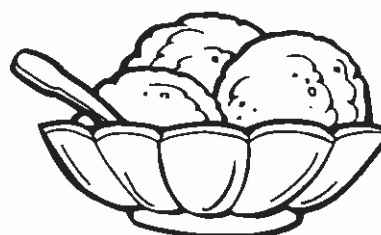
**Membership  
Committee:  
Ida Parrott,  
Joanne Lundquist,  
and Linda Titus**



# Show & Tell



# Ice Cream Social





# Recent Royal Bayreuth Prices on EBAY - October 2002

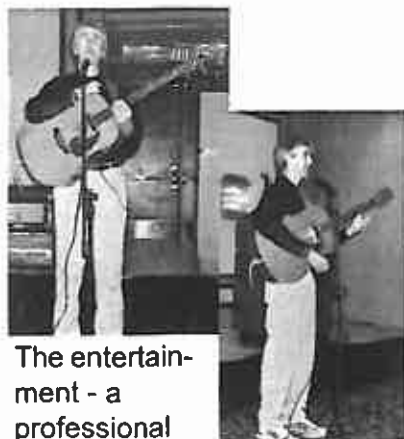
Submitted by Judy Stockwell

Grape Cracker Jar , purple, white and green UM .....	\$430.00
Grape Water Pitcher, Marked Germany .....	\$205.51
Red Poppy Teapot , BM and Deponiert .....	\$125.00
Devil & Card Mug 5" BM .....	\$152.50
Ping Pong and Flag Creamer BM .....	\$204.50
St. Bernard Creamer ,BM .....	\$154.59
Cavalier Tapestry Vase 6"BM .....	\$179.39
Figural Rose Bowl with Spoon 3" x 4 1/2" BM .....	\$400.00
Pansy Pitcher 5" tall BM .....	\$187.50
Sunbonnet Cake Plate Girls Ironing, BM, .....	\$136.38
Pr. Elk Salt and Pepper Shakers, small chip on one .....	\$152.50
Red Poppy Creamer, BM & Deponiert .....	\$90.01
Strawberry Teapot with Sugar and Creamer .....	\$177.50
Pear Creamer BM, .....	\$209.49
Table Tennis Vase, Arm,hand & paddle , Red/W/Blue Ribbon .....	\$406.99
Brown Bear Scene 8 1/2" Pitcher, BM .....	\$787.50
Cat Creamer, White/Lt.gray .....	\$174.99
Vase, 3" with pr. Of Pheasants perched in shrub BM .....	\$107.50
Baked Potato Royal Bayreuth Railroad Set RARE, .....	\$3,827.00
Creamer, Winter Scene with Goats , 2 1/4" .....	\$74.56

Rooster, 7" pitcher 9" wide, beautiful multi color , BM .....	\$2,025.00
Owl Creamer, UM , 4"x 3 3/8" .....	\$152.50
Child's Tea Set in box , Creamer, Sugar and Teapot ..full rhyme .....	\$384.00
Tapestry Cup and Saucer BM Castle scene .....	\$100.75
Candle Holder , Jack and Jill with full rhyme BM .....	\$159.00
Violet Tapestry Leaf shaped dish BM .....	\$150.00
Man and Dogs Scene Pitcher 8" x 5 1/2" BM Scene on top/Red Bottom .....	\$84.89
Rose Tapestry Clock, Pink Roses .....	\$331.00
Tomato Salt and Pepper Shakers BM .....	\$37.10
Devil and Card Salt and Pepper Shakers .....	\$282.77
Tapestry Vase 4 1/2" BM Bathers scene .....	\$150.00
Clam Shaped SunBonnet Babies trinket box Washing windows/cleaning BM ..	\$197.50
Figural Flower Tea Strainer oxalis? .....	\$536.99
Radish Bowl, UM 5" .....	\$66.00
Oak Leaf Bowl, 5 1/2 " long x 4 1/2 wide BM .....	\$202.49
Demitasse Cup and Saucer , Donkey and Man Scene, BM .....	\$67.00
Black Water Buffalo Creamer BM .....	\$86.00
Monk Creamer, UM #12 on bottom only 4 5/8x 4 3/4 .....	\$305.01
Vase with Grapes, very colorful, 8 1/4"BM .....	\$43.96
Vase with Children Washing , Orange .....	\$81.80
Fish head creamer 4 3/8" Trout .....	\$152.45
Babes in the Woods 3 Handled Toothpick or small vase UM .....	\$76.01
Lamplighter Toothpick 3 1/2" BM .....	\$356.99
Holly Dish w/small chip & some berries may have been touched up 8" ..	\$1,300.16
Scuttle 3 1/4" Boy and donkey BM .....	\$75.00
Dutch Girl on Pail Tooth Pick 2 1/2" , BM, .....	\$64.60
Miniature Ewer with Goats, Tapestry , .....	\$104.50
Yellow Penguin Creamer and Sugar, BM .....	\$203.52
Pear Cup and Saucer , BM on saucer .....	\$169.50
Mouse Water pitcher, registered on bottom and BM ,MINT .....	\$4,605.55



## The Banquet



The entertainment - a professional story teller. He was excellent!



Bob McCaslin presenting the outgoing Board Members, Harriet Land and Judy Stockwell, with plaques in gratitude for their service to the club.



New Board Members: Craig Heeley, Terry Anderson, and Joanne Lundquist



## 2002 Club Auction Review

In 2001, our club auction was held in Harrisburg, PA. At this auction, members had 222 items for sale. These items totaled \$95,357.00 or averaged \$429.62 per piece. In 2002 at Indianapolis we had 142 items for sale which totaled \$74,355.00 or \$523.52 per item. These figures show that our 2002 auction was not as soft as many members thought. For instance, we had about 110 bidders in 2001 compared to only 90 bidders at the 2002 auction. It is my opinion that the quality of our 2002 auction was equal, and maybe better, than recent RBCC auctions. We sincerely thank the members for their continued support in consigning high quality merchandise for our yearly club auction.

It has been said that by starting the check-in on Wednesday, rather than Thursday, the whole auction process went much smoother. Members of the auction committee plan on repeating this check-in procedure in 2003.

In 2001, we sold a green Santa

Lemonade for \$12,500. In 2002, a red Santa Water Pitcher for \$7100. Both of these are strong selling prices. Also, in 2001 a squirrel milk pitcher brought \$5750. In 2002, a squirrel creamer sold for \$5000. Good prices again. The Mike Clum auction in November listed a squirrel creamer, which sold for \$1000 and a leopard creamer for \$4750. (One sold at the club auction for \$7500.) Four years ago, RBCC auction sold a Kangaroo creamer for \$6000, and Clum's auction one went for \$3200. This is just a sample as how prices do fluctuate for so many different reasons. These were high price items, and will vary as to demand, amount of people at the auction, etc.

In 2002, RBCC total sales of \$74,355 on 142 items, from which we had in actual sales for \$48,500 total at 5% = \$2447.50 + a \$610 for 61 "no sales" @ \$10 each for a grand total of \$3057.50 commission to RBCC.

This year, we (as a club), had the rare opportunity to offer a helping hand to

Mrs. Jim Davis. We sold the remainder of their collection in the Saturday afternoon session (omitting the 5% commission). We thank each member that participated for their generosity. We hope that this small act helps Mrs. Davis at this time.

We welcome your comments about RBCC auction policy. Please send them to Bev Brumbaugh or me and we will pass your suggestions on to the other members of the RBCC Executive Board. The auction committee is trying their best to bring us an auction with quality pieces, an owners are allowed to place their reserves by bidding themselves. We do not intend for our members to suffer large losses on their items, while at the same time, being fair and reasonable in the amount of profit desired. Again, we thank the members for supporting the yearly club auction.

See this newsletter for the RBCC auction prices and a report on the Mike Clum Auction.

Bob



## Collecting Royal Bayreuth

by Bev Brumbaugh

Some time ago I was asked to write an article about how I became a Royal Bayreuth collector. I have procrastinated about completing this project because I didn't feel that my road to collecting RB was unique or special. I concluded, however, that as RB collectors we are all curious about how we came to be collectively associated together in an activity that takes so much of our time and money.

Bobby Jo's father, Bob Spaulding, was a collector of art glass and porcelain. Bobby Jo and I enjoyed talking with him about his collection which deepened our appreciation of art glass and porcelain. The Spauldings lived in

Chattanooga which is also home to the Houston Museum. The Houston houses a world class collection of 18th, 19th, and 20th century glass, porcelain and pottery. Everything in the museum was the work of Anna May Houston. She was a woman of modest means who dedicated her life to the acquisition of the very best for her collection. Bobby Jo and I frequently accompanied her dad on his visits there which we enjoyed as much as he did.

Thirty years ago during one of these visits I spotted a large porcelain pitcher decorated with playing cards and a large red devil for a handle. I didn't know what it was but I told myself that

one day I would own a pitcher like that one. 15 years later I bought my first piece of RB, a devil and cards creamer. Later I bought a devil and cards water pitcher and it has a prominent place in our collection.

This article would not be complete without a plug for the Houston Museum. Chattanooga is a wonderful destination and the Houston is one of it's gems. The Museum sits on top of a hill overlooking downtown. It is next door to another outstanding art museum (The Hunter), art galleries, and restaurants. Go there and tell them I sent you. It won't mean anything, but it is a good way to start a conversation!



# Convention 2003

## Cedar Rapids, Iowa



### ACCOMMODATIONS

Surrounding a lush, seven-story garden atrium, our 221 tastefully appointed guest rooms and suites will make you feel right at home. Each includes the comfortable amenities you're accustomed to, including voice mail, high-speed Internet access, a hair dryer, coffee maker, On-Command Video and iron and ironing board. For even more room and added luxuries, we offer VIP, hospitality and presidential suites. And those traveling on business will appreciate our king board rooms, which have the unique versatility to be used as sleeping rooms or as convenient spaces for hosting meetings and interviews.

### MEETINGS AND CONVENTIONS

With over 19,000 square feet of flexible meeting space, we can accommodate up to 1,200 guests in grand style. Whether you're hosting an intimate meeting or a lavish celebration, our professional banquet and catering staff will make sure no detail is overlooked. And state-of-the-art audiovisual equipment and high-speed Internet access will ensure that things run smoothly and exactly as planned. As an added convenience, we offer complimentary ground-level parking for your group.

## COLLINS PLAZA

### DINING AND ENTERTAINMENT

The serene, open-air ambiance of our Park Place restaurant provides the perfect place to read the morning paper or enjoy a casual breakfast, lunch or dinner. Make sure to stop in on Sundays for our champagne brunch—a favorite of guests and locals alike. If you're simply looking to end the day or start the evening with a favorite beverage, head to Beethoven's, the ideal setting for relaxing with friends or colleagues.

### RECREATION

We make it easy for you to refresh your mind and body during your stay. Take a swim in our heated indoor pool. Work out in our fully equipped fitness center, complete with free weights, treadmills, upright and recumbent cycles, a cross-trainer and more. Or, spend some time in our spas and dry sauna for the ultimate in relaxation.



## CEDAR RAPIDS



### Location:

Located off Interstate 380, just minutes from downtown and the Eastern Iowa Airport, Collins Plaza Hotel is an integral part of the Cedar Rapids community. We are convenient to major industries, local shopping, golfing and tourist sites. Iowa's number-one visitor attraction, The Amana Colonies, is just 20 minutes away.

For reservations, call (319) 393-6600 or 1-800-541-1067  
Fax (319) 393-2308

1200 Collins Road - Cedar Rapids, Iowa 52402  
[www.collinsplazacedarrrapids.com](http://www.collinsplazacedarrrapids.com)

  
**Collins Plaza**  
HOTEL AND CONVENTION CENTER

ANOTHER EXCEPTIONAL HOTEL BY JOHN Q. HAMMONS HOTELS, INC.



Outstanding 580 Piece Royal Bayreuth Collection  
**SATURDAY, NOVEMBER 2, 2002 9:00 AM**  
**MIKE CLUM INC. AUCTION GALLERY**

For those of you who were not able to attend the Clum Auction of Royal Bayreuth in Ohio in November, this is just a short synopsis of pieces offered and prices paid. It was a large auction and lasted for six solid hours with no breaks for buyers sitting in folding chairs whose hardness increased as the hours grew longer! Only the auctioneers (3) got lunch breaks. But in the end I think most of the bidders would agree that it had been worth it. It was truly a buyers' paradise as there were some great pieces offered and the prices were as good as any I know of in the last few years.			The following are some samples of the roster of sales.		
I know this is a long list, but I tried to give you a sampling of both common and rare pieces. If there is a piece that was sold but not on my list, and you want to know what it sold for, just email me and I'll be glad to let you know since I have a complete list of sale prices.			It was fun to see those RBCC members who were attending, and even more fun to come home with a few desirable pieces of our own.		
			<i>Bobby Jo Brumbaugh</i>		
\$3200	Rare Kangaroo creamer, BM	150	Devil & Cards ashtray, BM	400	Rose Tapestry lady's high top shoe, BM
1600	Rare Santa bronze coat matchholder w/striker, D	210	Devil & Cards candy dish, BM	450	Man's brown high top shoe
2500	Rare Fox stirrup creamer, BM	170	Devil & Cards ashtray, GM	60	Man's black high top shoe
1000	Rare Moose creamer, BM	250	Devil & Cards hanging matchholder, GM	250	Rose Tapestry lady's low cut shoe
1000	Rare Squirrel creamer, (rest. on 1 ear)	700	Devil & Cards open sugar, GM	150	Lady's high top button style 2 tone brown shoe
700	Rare Leopard creamer, BM	550	Devil & Cards dresser tray, BM	70	Lady's black high top shoe
7250	Rare green Santa candy compote, BM	150	Devil, Cards, & Dice demi cup & saucer	50	Man's brown oxford shoe
900	Rare Devil black clock plate, 6"	180	Devil & Cards creamer, BM	175	Small Rose Tapestry basket, BM
700	Rare Devil white clock plate, 4 1/2"	200	Devil & Cards milk pitcher, GM	75	Rare Peacock Tapestry wall plate w/hanging holes, 9 1/2", BM
750	Rare green Santa candy dish	425	Devil & Cards water pitcher, BM	100	Rose Tapestry lidded & footed hair receiver, BM
300	Rare Chestnut creamer w/early green Teltau mark	175	Devil Head ashtray, BM	50	Pheasant Tapestry bud vase, BM
350	Rare large red Rose Creamer, BM	325	Devil milk pitcher, BM, restoration 1 horn	70	Cow Tapestry handled planter, BM
425	Devil & Cards matchholder w/attached ashtray, BM	375	Devil creamer, BM	50	Bathing Scene Tapestry bud vase, BM
450	Devil & Cards lidded stamp box, BM	200	Devil ashtray, BM	60	Rose Tapestry lidded & footed powder jar, GM
200	Devil & Cards humidor, BM	275	Rare Devil variant ashtray (no arms), GM	180	Rose Tapestry 9 1/2" wall hanging plate w/ hanging holes, BM
250	Devil & Cards pr. shakers	525	Tulip demi cup & saucer	50	Rose Tapestry 2 handled vase, 4 1/2" BM
125	Devil & Cards master salt, BM	190	Rare Sunflower salt	140	Gazebo Scenic Tapestry handled & footed deer toothpick holder
200	Devil & Cards beer mug, BM	625	Rare Sunflower creamer, BM	100	Rose Tapestry clam shape lidded dresser box, BM
250	Devil & Cards lidded card box, BM	500	Iris creamer	200	Rare Rose Tapestry footed & handled toothpick holder, BM
425	Devil & Cards lidded sugar, GM	500	Chrysanthemum milk pitcher, BM	70	Pheasant Tapestry handled planter, BM
400	Devil & Cards short candle holder, GM	350	Chrysanthemum creamer, BM	150	Pr. Rose Tapestry shakers, BM
225	Devil & Cards toothpick holder, BM	250	Rose toothpick holder, BM	150	Highland Goats Tapestry milk pitcher, BM
		60	Rose cup & saucer (gold finish)	60	Rose Tapestry creamer, BM
		200	Rose 6" bowl, BM	50	Rose Scene Tapestry lidded dresser box, BM
		250	Large Rose creamer, BM	60	Small Rose Tapestry vase, BM
		325	Rose small creamer, BM	170	Highland Goats Tapestry hanging matchholder, BM
		130	Rose demi cup & saucer, BM	275	Rose Tapestry hatpin holder, BM
		250	Rose hair receiver, BM	175	Rose Tapestry hanging matchholder, BM
		350	Rose 8 1/2" bowl, BM	65	Rose Tapestry creamer, BM
		325	Rose lidded mustard w/original spoon, BM	175	Large Rose Tapestry basket, BM
		325	Rose handled chamber stick in pearlized finish, BM	200	Rose Tapestry 3 pc. tea set, BM
		130	Rose lidded sugar, BM	105	Rose Tapestry milk pitcher, BM
		400	Pr. Rose shakers (1 mkd. Germany)	65	Rose Tapestry creamer, BM
		325	Rose milk pitcher, BM	100	Rose Tapestry flower bowl w/insert, BM
		2200	Mouse milk pitcher, Registered	80	Rose Tapestry 5 1/4" vase, BM
		1250	Mouse creamer, Registered	25	Rose Tapestry leaf candy dish, GM
		300	Red pig creamer, BM	175	Rose Tapestry scalloped handled basket, BM
		250	Gray pig creamer, BM	85	Rose Tapestry dresser tray w/white roses, BM
		3200	Red Santa milk pitcher, BM	230	Rose Tapestry chamber stick, BM
		500	Platypus creamer, BM	90	Rose Tapestry milk pitcher corsette shape, BM
		230	Mountain goat ashtray, BM	35	Rose Tapestry leaf shape candy dish w/white roses, BM
		350	Mountain goat hanging matchholder, BM	40	Rose Tapestry handled planter, BM
		475	Gorilla creamer, BM	50	Rose Tapestry ashtray, BM
		300	Chimpanzee milk, BM	60	Rose Tapestry open handled relish, BM
		225	Chimpanzee creamer, BM	110	Rose Tapestry cream & sugar alligator mouth & square handle, BM
		400	Chimpanzee hanging matchholder, BM	55	Rose Tapestry scalloped relish dish, BM
		750	Chimpanzee humidor, D	65	Violet Tapestry leaf shape candy dish, GM
		200	Brown monkey creamer	100	Shell hanging matchholder, BM
		175	Green monkey creamer, BM	620	Brown boot shape shell water pitcher
		1000	Brown monkey watcher pitcher	105	Shell sauce boat & undertray, BM
		350	Green monkey milk, BM		
		140	Black lady's high top shoe, GM		
		170	Lady's 2 tone brown high top shoe, BM		
		220	Man's 2 tone brown low cut shoe, BM		
		250	Rose Tapestry low lady's shoe, GM		
		130	Lady's black high top shoe		
		130	Man's brown high top shoe		
		220	Lady's 2 tone gray & black high top shoe		



100	Shell divided handled dish	100	Oak Leaf creamer, BM	240	Girl w/basket creamer w/peach dress, D
85	Shell 2 pc. bowl & leaf underplate, BM	105	Oak Leaf lidded mustard w/orig. spoon, BM	140	Coachman milk pitcher, GM
145	Shell planter, GM	350	Pepper toothpick holder	650	Coachman water pitcher, BM
150	Shell candy dish, BM	40	2 pc. Ramekin set	30	Coachman creamer, BM
115	Shell creamer w/coral handle, BM	725	Pr. Cucumber shakers	250	Coachman toothpick holder, BM
70	Boat shape Shell creamer w/coral handle	135	Pr. Pepper shakers	360	Monk creamer, BM
200	Shell water pitcher w/coral handle	200	Cucumber celery	200	Milk Maid w/red dress creamer, BM
80	Shell creamer w/coral handle	115	Pr. Chili shakers	220	Girl w/pitcher creamer w/blue dress D
70	Shell creamer boat shape w/coral handle	450	Pr. Corn shakers	30	Small covered Tomato underplate, BM
5	Shell mint dish, BM	240	Pr. Chinese Lantern shakers	60	Tomato demi cup & saucer, BM
900	Shell water pitcher w/seahorse handle	190	White Grapes water pitcher	60	Large covered Tomato w/underplate, BM
250	Shell creamer w/seahorse handle	75	White Grapes lidded sugar	625	Tomato wall pocket, BM
10	Pr. Shell 7 1/2" plates "Wildwood", BM	100	White Grapes milk pitcher	30	Tomato celery dish, BM
350	Elk tall candle holder, BM	50	Pr. White Grapes shakers	150	Tomato water pitcher, BM
100	Pr. Elk shakers, green Bavaria mark	225	White Grapes lidded cracker jar	30	Tomato creamer, GM & small Tomato teapot, BM (hairline)
85	Elk toothpick holder, antlers open, BM	60	White Grapes creamer	50	Pr. Tomato shakers, GM
725	Elk dresser tray, BM	130	White Grapes lidded teapot	450	Tomato lidded cracker jar, BM
120	Elk toothpick holder, antlers closed, BM	65	White Grapes 9 1/2" bowl	30	Pr. Tomato shakers, blue Bavaria mark
230	Elk stirrup creamer, BM	420	Rooster white sugar, BM	50	Tomato milk pitcher, BM
335	Elk short candleholder, BM	200	Rooster wall string holder, BM	40	Tomato salad bowl, BM
300	Elk beer mug, BM	370	Rooster multi color sugar, BM	10	Tomato low profile shaker
310	Elk matchbox holder, BM	220	Black Rooster creamer	75	Tomato 3 pc. tea set, BM
500	Elk long inkwell w/lid & insert, BM	2000	Rooster multi color water pitcher, BM	10	Tomato small bowl, BM
235	Elk stirrup cup, BM	170	Rooster gray creamer, BM	70	Tomato lidded mustard w/original spoon & underplate, BM
290	Elk short inkwell w/lid, BM	170	Rooster white creamer, BM	10	Tomato bowl w/large center tomato, BM
310	Elk celery dish, BM	180	Rooster greenish gray creamer, BM	20	Tomato 8 1/2" plate, BM
220	Elk pin cushion, BM	225	Rare Moth creamer, BM (sm. crack)	40	Tomato sauce boat w/underplate, BM
165	Elk open sugar, BM	275	Closed Winged Butterfly creamer	25	Tomato 7 1/2" plate, GM
110	Elk souvenir creamer, BM	180	Butterfly creamer, BM	60	Poppy lidded teapot, GM
135	Elk toddy cup, #33	325	Cockatoo milk pitcher, BM	100	Poppy pearlized 3 pc. mayonnaise set w/rare ladle, BM
180	Elk hanging matchholder, BM	275	Cockatoo creamer, BM	60	Poppy 10" cake plate, BM
300	Elk short lidded sugar, BM	825	Lady Bug creamer, GM	70	Poppy compote, BM
70	Elk ashtray, BM	150	Butterfly milk pitcher, BM	160	Maple Leaf milk pitcher, BM
700	Elk lidded humidior, BM	260	Parakeet milk pitcher, BM	650	Maple Leaf water pitcher, BM
200	Elk scuttle shaving mug, BM	1550	Parakeet water pitcher, BM	100	Maple Leaf creamer, BM
325	Elk water pitcher, BM	175	Parakeet blue & yellow creamer, BM	180	Geranium creamer, BM
215	Elk tall lidded sugar, BM	250	Parakeet multi color creamer, BM	300	Poppy hatpin holder, BM
205	Elk milk pitcher, BM	80	Duck blue, gray, & yellow creamer, Registered	450	Poppy lidded cracker jar, BM
120	Elk creamer, BM	240	Duck milk pitcher, BM	40	Poppy coffee cup & saucer, BM
280	Pansy tea strainer, blue Bavaria mark & D	625	Duck water pitcher, Registered	85	Poppy 9 1/2" bowl w/black decorations, BM
255	Pansy milk pitcher, GM	90	Duck blue, gray, & yellow creamer, Registered	20	Poppy nut bowl, BM
1300	Pansy toothpick holder, D	80	Duck blue, gray, yellow & brown creamer, BM	275	Poppy water pitcher, BM
875	2 pc. Pansy tea strainer & under bowl, BM	130	Frog green & yellow w/orange breast creamer	85	Bull creamer in brown & white, BM
305	Pansy candy dish, GM	160	Frog milk pitcher	80	Bull black creamer, BM
150	Pansy lidded mustard w/original spoon, BM	70	Frog creamer, BM	100	Bull gray creamer, BM
75	Pansy waste bowl, BM	440	Turtle large creamer, BM	500	Black Bear creamer, BM
135	Pansy lidded mustard w/original spoon, GM	1025	Turtle lidded sugar, 6 1/2", BM	825	Black Bear milk pitcher, BM
165	Pansy lidded sugar, BM	390	Turtle large creamer, BM	120	Red Cow creamer, BM
340	Pansy lidded teapot, BM	525	Turtle lidded sugar 5", BM	170	Mountain Goat creamer, BM
95	Pansy salt	240	Alligator milk pitcher, BM	300	Mountain Goat hanging matchholder, BM
310	Pansy creamer, BM	130	Alligator creamer, BM	200	Water Buffalo milk pitcher, BM
45	Oyster & Pearl lavender ashtray, BM	300	Bell Ringer milk pitcher, BM	130	Water Buffalo brown creamer, BM
170	Oyster & Pearl handled caramel toothpick holder, BM	550	Bell Ringer water pitcher, BM	130	Water Buffalo black creamer, BM
35	Oyster & Pearl blue ashtray, BM	210	Bell Ringer toothpick holder, GM	300	Gray Cat milk pitcher, BM
45	Oyster & Pearl creamer, BM	110	Bell Ringer creamer, BM	150	Gray Cat creamer, BM
30	Oyster & Pearl green creamer, BM	2200	Red Santa Claus creamer w/open hndl, BM	110	Black Cat creamer, BM
85	Oyster & Pearl caramel lidded powder jar, BM	210	Lamp Lighter toothpick holder, BM	150	Black Cat milk pitcher, D
165	Oyster & Pearl green demi cup & saucer, BM	750	Lamp Lighter water pitcher, BM	140	Cat handled creamer in caramel & gray Calico, BM
240	Oak Leaf pearlized water pitcher, BM	275	Lamp Lighter milk pitcher, BM	130	Black cat handled creamer, BM
30	Oak Leaf pearlized candy dish, BM	100	Lamp Lighter creamer, BM	290	White cat handled creamer, BM
150	Oak Leaf milk pitcher, D	190	Girl w/basket creamer w/red dress, D	500	Pr. Cherry shakers
25	Oak Leaf lavender creamer, BM	220	Girl w/basket creamer w/green dress, BM	525	Pineapple lidded marmalade w/undrplt, BM
75	Oak Leaf pearlized celery dish, BM			225	Pr. Plum shakers
150	Oak Leaf lidded sugar, BM			210	Pear demi cup & saucer, BM
				625	Pear milk pitcher, molded flower mark
				325	Pear creamer, molded flower mark
				200	Melon milk pitcher, BM
				1150	Melon water pitcher



160	Melon creamer, BM	80	Shell chamber stick, BM	75	St. Bernard creamer, BM
30	Apple lidded sugar	10	Shell milk pitcher low profile, BM	65	Black Bassett candle holder
230	Pr. Apple shakers	460	Shell water pitcher low profile, BM	105	Gray Poodle creamer, BM
60	Lidded Apple w/underplate, BM	10	Shell creamer low profile, BM	85	Dachshund creamer, BM
170	Small Apple lidded teapot, BM	30	Pr. Spiky Shell shakers, blue Bavaria mark	775	Dachshund water pitcher, BM
280	Apple lidded mustard w/original spoon, BM	230	Bird of Paradise creamer, BM	220	St. Bernard milk pitcher, BM
40	Green Apple creamer, GM	375	Owl hatpin holder	765	Hound Dog creamer, MV Company mark
425	Apple lemonade pitcher, BM	180	Gray Owl creamer, BM	80	St. Bernard creamer, BM
300	Apple water pitcher, BM	300	Gray Owl milk pitcher, BM	380	Fish Head water pitcher, BM
70	Apple milk pitcher, BM	150	Brown Owl creamer	550	Fish Head lemonade pitcher
70	Apple creamer, BM	260	Robin water pitcher	85	Fish Head milk pitcher, BM
90	Apple demi cup & saucer, BM	60	Robin milk pitcher	35	Fish Head creamer, BM
30	Lobster small lidded sugar, BM	60	Robin creamer, BM	3200	Rare Perch water pitcher, BM
50	Lobster milk pitcher, BM	450	Chick milk pitcher	150	Brown Seal creamer, BM
45	Lobster salt	100	Chick creamer	1700	Brown Seal water pitcher, BM
60	Pr. Lobster shakers, blue Germany mark	50	Black Crow creamer w/orange beak, GM	115	White Seal creamer, BM
200	Lobster water pitcher, BM	80	Gray Crow creamer w/brown beak, BM	250	Perch creamer, BM
50	Lobster creamer, BM	20	Black Crow creamer w/orange beak, MV	400	Flounder creamer, BM
25	Lobster claw ashtray, GM		Company mark	325	Standing Trout creamer, BM
110	Lobster celery, GM	10	Hawk milk pitcher (hairline on back)	2000	Red Santa matchholder w/striker, BM
40	Lobster lidded mustard w/original spoon, GM	10	Hawk creamer, Germany mark	500	Art Nouveau tall candlestick, BM
55	Lobster candy dish, BM	20	Hawk milk pitcher, Germany mark	350	Art Nouveau milk pitcher, BM
75	Lobster lg. bowl, BM	70	Red Crow creamer w/brown beak, BM	325	Art Nouveau dresser tray, BM
60	Lobster lg. lidded sugar, BM	35	Black Crow creamer w/brown beak, BM	625	Art Nouveau lidded box w/attached tray, BM
675	Rare Lady Clown candlestick holder BM	55	Black Crow creamer w/reddish orange beak, BM	1600	Art Nouveau water pitcher, BM
200	Clown pipe rest			550	Art Nouveau double face 6" bowl, BM
725	Green Clown milk pitcher, BM	75	Eagle creamer, BM	30	Man in Mountain creamer, GM
525	Yellow Clown milk pitcher, BM	340	Eagle lidded humidior, BM	20	Fighting Birds milk pitcher, BM
150	Red Clown milk pitcher, BM	360	Eagle candle holder, BM	75	Man & Turkeys heart shape master salt set w/
475	Clown dresser tray, BM	150	Eagle milk pitcher, BM		6 individuals, BM
1100	Rare M.O.P. Clown water pitcher, BM	400	Eagle water pitcher, BM	575	Hanging Peaches wall pocket, BM
	(hairline crack)	260	Eagle ashtray w/claws up, BM	3	Floral footed salt, BM
230	Clown shaker	420	Eagle master salt, BM	45	Puffed out Floral 10 1/2" deep bowl, BM
225	Clown mug, BM	210	Pelican milk pitcher	260	Rooster dresser tray, BM
175	Clown candy dish, BM	300	Pelican water pitcher	15	Heart shape Master salt w/turkeys, BM
350	Clown hanging matchholder, BM & D	70	Pelican creamer	15	Footed individual salt w/Highland Goats, BM
750	Red Clown water pitcher, BM	500	Penguin hatpin holder	30	Footed individual salt w/Highland Sheep, BM
180	Red Clown creamer, BM	800	Penguin milk pitcher	25	ROYAL BAYREUTH A Collector's Guide by
425	Clown seated candleholder, BM	1050	Rare Snake milk pitcher (factory flaw) BM		Mary J. McCaslin
300	Clown matchbox holder, BM	700	Snake creamer, BM	15	ROYAL BAYREUTH FIGURALS by Joan
625	Clown tall candle holder w/matchholder, BM	155	Green Parrot handle milk pitcher, D		and Marvin Raines
260	Clown toothpick holder, BM	165	Red Parrot handled creamer, BM	25	ROYAL BAYREUTH FIGURALS Book 2 by
120	Clown ashtray, BM	215	Red Parrot handled milk pitcher, BM		Joan & Marvin Raines
280	Clown lidded sugar, BM	10	Purple Grape decanter, blue Bavaria mark	20	ROYAL BAYREUTH CHINA by Virginia
775	Clown lidded humidior, BM	10	White Grape lidded mustard, BM		Sutton Salley and George H. Salley
50	Radish relish	20	Pr. purple Grape shakers, BM	5	ROYAL BAYREUTH CHINA Insert by
40	7 pc. Almond nut set, D	135	Green Grape water pitcher, GM		Virginia Sutton Salley and George H. Salley
70	Corn 8 1/2" plate, BM	15	Purple Grape lidded sugar, BM	50	Lobster Claw demi cup & saucer, BM
20	Radish butter pat	30	Yellow Grape creamer, blue Bavaria mark	20	Lobster handled nappie, BM
350	Radish 7 pc. master salt w/6 individuals	165	Green Grape lidded cracker jar, blue Germany	20	Lobster handled small creamer
100	Pr. Radish shakers	35	Pr. white Grape shakers, blue Germany	10	Lobster handled large creamer
30	Radish open handle relish, BM	40	White Grape demi cup & saucer, BM	20	Lobster handled milk pitcher
30	Shell low profile milk pitcher, BM	25	Yellow Grape milk pitcher	100	Lobster handled water pitcher BM
35	Shell Atlantic City souvenir cream pitcher, BM	150	Yellow Grape water pitcher, BM	20	Lobster handled creamer, BM
45	Shell 10" bowl, BM	20	Purple Grape creamer, BM	35	Lemon creamer, BM
25	Shell 6" footed bowl, D	130	Yellow Grape lidded tea pot, blue Bavaria mk	85	Lemon milk pitcher, BM
70	Shell low chamberstick in rare black & white, BM	45	Pr. white Grape shakers (Highland), GM	375	Lemon water pitcher, BM
		155	Yellow Grape wall pocket, BM	675	Lemon lemonade pitcher, BM
60	Shell 5" footed bowl, green Bavaria mark	5	Purple Grape shaker, BM	60	Lemon covered sugar, BM
90	Shell hanging matchholder, D	25	White Grape candy dish, BM	145	Rare Lemon mustard painted orange w/lid &
30	Shell celery, GM	240	Dachshund milk pitcher, BM		original spoon, BM
110	Shell tall candlestick, D	75	Black Poodle milk pitcher, BM	450	Lemon lidded teapot, BM
50	Shell cigarette holder, BM	15	Black Poodle creamer, BM	160	Orange lidded mustard w/underplate & original
50	Pr. low profile Shell shakers, BM	425	St. Bernard water pitcher		spoon, BM
110	Shell water pitcher, GM	500	Dachshund hatpin holder, BM	240	Orange lidded teapot, BM
50	Shell milk pitcher, BM	55	Bassett pipe rest, BM		



- 120 Orange textured lidded sugar, BM
- 425 Orange water pitcher, BM
- 150 Orange milk pitcher, BM
- 75 Orange creamer, BM
- 120 Orange lidded sugar
- 10 Spiky Shell creamer, BM
- 25 Spiky Shell lidded mustard w/original spoon, blue Bavaria mark & #37
- 25 Spiky Shell toothpick holder, D
- 22.<sup>30</sup> Spiky Shell lidded sugar, BM
- 12.<sup>30</sup> Spiky Shell coffee cup & saucer, BM
- 50 Spiky Shell lidded teapot, BM
- 5 Spiky Shell cup & saucer, BM
- 15 Spiky Shell boot shape creamer, blue Germany & #17
- 15 Spiky Shell boot shape milk pitcher, blue Germany
- 350 Spiky Shell boot shape water pitcher, blue Germany & #20
- 45 Spiky Shell gravy boat w/under plate, BM
- 5 Spiky Shell footed coffee cup, blue Germany & #20
- 25 Spiky Shell lidded box, BM
- 90 Spiky Shell demi cup & saucer, BM
- 40 Spiky Shell Toothpick Holder, D
- 5 Spiky Shell ashtray, BM
- 30 Spiky Shell creamer & lidded sugar souvenir from Wildwood, BM
- 375 Strawberry hanging wall pocket, BM
- 110 Strawberry lidded sugar
- 310 Strawberry water pitcher, BM (restored as is)
- 90 Strawberry milk pitcher, BM
- 35 Strawberry creamer, BM
- 425 Strawberry large cracker jar
- 50 Pr. Strawberry shakers
- 525 Strawberry small lidded cracker jar, BM
- 440 Strawberry lidded marmalade w/underplate
- 50 Strawberry lidded mustard w/underplate & original spoon, BM
- 30 Poppy cocoa cup & saucer, BM
- 55 Poppy lavender lidded hair receiver, BM
- 70 Poppy salt
- 110 Poppy hanging or standing matchholder
- 80 Poppy lidded mustard w/original spoon, BM
- 475 Poppy demilasse lidded pot, BM
- 425 Poppy lidded chocolate pot, BM
- 425 Poppy toothpick holder
- 60 Poppy milk pitcher, BM
- 275 Rare Poppy creamer w/gold trim & peach color, BM - BEAUTIFUL
- 25 Poppy lavender candy dish, BM
- 115 Poppy lavender milk pitcher, BM
- 45 Red Poppy 6" plate, BM
- 150 Pr. Poppy satin finish shakers
- 100 Red Poppy lidded sugar
- 140 Pr. Poppy peach & green shakers
- 50 Red Poppy candy dish, BM
- 30 Poppy white satin lidded sugar bowl
- 40 Pr. red Poppy shakers, D
- 65 Poppy peach milk pitcher, BM

## *A Note from your Club Historian*

I am not receiving many articles or pictures for the notebooks and would appreciate it if you would try to find some interesting articles or pictures, auctions or whatever relating to Royal Bayreuth. The notebooks are only as good as YOU help make them....thanks, Judy Stockwell

## Notice

Larry Brenner's  
email address is:  
elberene@aol.com

## ACTIVE S.G.S. SEEKS S.G.S.

*Single green oak leaf  
shaker seeks mate.  
No marks needed,  
but must be luster green.  
Prefer honest and stable  
mate who loves dogs.*

LINDA NELSON  
608.238.3651  
olddog@chorus.net



## Treasurers Report

Submitted by Sandy Heerhold, Treasurer

Balance 8-31-02 .....	\$ 17,413.55
Income .....	\$ 58,427.00
Expenses .....	\$ 57,871.74
Balance 12-01-02 .....	\$ 17,968.81