

Royal Bayreuth Collectors Club

Volume 10, Issue 2

June 2005

RADISSON AIRPORT HOTEL Convention 2005 Warwick, Rhode Island



Room Rate \$109.00 + tax

For reservations, call
401-739-3000
www.radisson.com/warwickri

September 22 - 24

Room Rate \$109.00 + tax

CONVENTION DETAILS ON PAGES 5

In this issue

President's Message	2
Secretary's Message	3
Treasurer's Report	3
Auction 2005	4
Hospitality Help for your committee	4
2006 Convention	4
RBCC Convention	5
Greetings from Rhode Island	5
eBay Prices	6-7
Radisson Airport Hotel Floor Plans	7
Top Ten Reasons to Attend Convention	8
Collector's Corner	8
Touring the Culinary Archives and Museum at Johnson & Wales University	9
Little Rhody Facts Part II	9
Holy Grail of Scenic Royal Bayreuth	10
2005 Convention Reminder	10
Convention Information	11-12

Royal Bayreuth Collectors Club

President:

BEV BRUMBAUGH
501 E. Summer St.
Northfield, MN 55057
507-645-5382
bbrumbaugh01@charter.net

Vice President:

TIM SULLIVAN
5059 West Lake Road
Geneseo, NY 14454-9576
585-243-2967
leneerous@aol.com

Treasurer:

CAROLYN CHURCH
110 Blackwood Street
Beaver Falls, PA 15010
724-846-4526
JKC110@attbi.com

Secretary:

KAREN CHURCH
110 Blackwood Street
Beaver Falls, PA 15010
724-846-4526
JKC110@comcast.net

Executive Board of Directors:

TERRY ANDERSON
1734 Telemark Drive
Rockford, IL 61106-6614
815-397-4189
lande4343@aol.com

STEVE BARTLETT
1320 Waterford Drive
East Greenwich, RI 02818
401-885-5889
dufferdog@aol.com

JANET BELCHER
256 Pinkerton Court
Marion, IN 46952
765-664-1467
janalbel@aol.com

BECKY CONRAD
12355 N. Upper Lakeshore Drive
Monticello, IN 47960-4748
574-563-3002
becky@belhsantiques.com

PAUL STRATMAN
6215 E. Avalon Drive
Scottsdale, AZ 85251
480-423-9776
paulstratman@cox.net

KAT THACKER
311 West Drayton
Ferndale, MI 48220
248-545-0392

Historian:

JUDY STOCKWELL
45 Concord Street
Petersborough, NH 03458
603-924-3539

Editor:

LINDA TITUS
P.O. Box 983
Durant, IA 52747-0983
563-785-4438 Fax 563-785-4673
imagesinink@iowatelecom.net



President's Message

By Bev Brumbaugh, RBCC, Inc. President

Here it is time for the spring newsletter. I

know it is spring because all my neighbors who have planted flowers have to cover them at night so they won't freeze. I know there are people who never have these thoughts or conversations. These people live in places like San Diego and Florida. They must believe that if the rest of us didn't have weather to discuss, we wouldn't have anything to talk about. And you may be right about that.

While most of the people I know blame their lack of gardening accomplishment on a cold wet spring, I have a much better excuse for my lack of herbageous achievement. Earlier this month I had surgery for a torn rotator cuff. My left arm is in a sling, so my gardening accomplishments have been slim to none. Bobby Jo has been very supportive and helpful but she says that her prenuptial agreement doesn't say anything about planting and weeding.

Some club members get to enjoy a leisurely surgical recovery and others have to work. Your secretary and treasurer, Karen and Carolyn Church, work continuously on club affairs. Tim Sullivan, your vice president and auction chairman, works very hard to deliver the very best auction for the club's enjoyment and benefit. Linda Titus, your editor, puts out a first rate newsletter, not once, but four times a year. Steve and Christine Barlett and their team, Larry Brenner and Ken and Judy Stockwell, have been working for months to deliver a five star convention this

fall. Your directors, Bob McCaslin, Terry Anderson, Steve Barlett, Janet Belcher, Becky Conrad, Paul Stratman, Kat Thatcher get frequent emails requiring decisions about club business and some even find time to take on new jobs like nominations committee chairman (Bob McCaslin), plaque sales and convention publicity (Becky Conrad), 2005 convention hosts (Steve and Christine Barlett), and host committee handbook (Terry and Mary Anderson and Kat and Gregg Thacher).

Others also contributed to these efforts. Alan Belcher and Sandy Heerhold on the nominating committee; Judy Stockwell as our historian, Bob Gollmar, plus Chuck and Sandy Heerhold on the host committee handbook.

Every now and then it is a good idea to stop and say thank you to all of those who volunteer to make the club better for all of us. Thank you, thank you very much!

This newsletter will give you a flavor of our upcoming convention. 2005 represents a unique opportunity to attend an outstanding event and see a part of the country that is a major worldwide tourist destination. The old saying, come early and stay late, really applies here.

Bobby Jo and I wish you the very best for the coming summer. We hope you will find some time to relax and enjoy the season ahead and most of all, we hope to see you in Providence in September.

Best Wishes,
Bev

Secretary's Message

Karen Church, Secretary R.B.C.C.



Hello everyone,

First of all, here's the secretarial report. In my 2 years as club secretary, we have had 48 members who have not renewed membership. I have had 32 new members join in that same period. As you can see the numbers are not adding up. We have a total club membership of 174. We even lost 4 new members that had joined last year and did not renew for this year. I'm sure the board would love to hear any suggestions as to how to increase membership or even keep the ones we have!

You'll see your roster enclosed. I'd like to thank those of you who filled out your papers with your updated information. It was really a big help! I went by the information I received. If it wasn't on the paper, it's not included in the roster. If no paper was received, I left the information the same. Please check your roster information carefully and let me know of corrections, changes, or additions etc. so I can get them to Linda, our editor. Email addresses are especially helpful!!! You can email mom or me at jkc110@comcast.com. My address is: 110 Blackwood St. Beaver Falls, PA. 15010 724-846-4526

Steve, Chris, Judy and Ken (and whoever else is helping!) are really putting together a great convention in Rhode Island. The plans all sound great and I believe people will see that the cost is really not bad for what you're getting! Hope we have a lot of people that decide to come to the east coast this fall!!! Please get your registrations in to me as

soon as possible. I need to compile the numbers and information for the Rhode Island crew.

Our family went to Maryland recently to visit relatives. We stopped in Hagerstown and I found a small Sunbonnet babies saucer to go with one of my child's teacups that didn't have a saucer. I paid \$20. We also went to Savage Mills and I found a small dish in the shape of #29 in Mary McCaslin's first book. It has the Muff Lady at the top portion (scene 55 in Book 1- but facing toward the right). The lower portion is yellow and has an old fashion looking ice skate

where the cork is. I had never seen the skate before.

Maybe there are a lot of them out there! I plan on bringing it to convention for show and tell (but now everyone will know!!!). We are planning a trip to Ohio next weekend, so I'll let you know of any other "finds".

We had 2 ½" of SNOW Saturday night. Unbelievable for late April, but I guess Mother Nature still has some tricks up her sleeve!

Have a great summer. Everyone take care. Please consider coming to the Rhode Island convention.

R.B.C.C. Treasurer's Report

Carolyn Church, Treasurer R.B.C.C.

February 1, 2005-April 30, 2005

<u>Closing Balance-January 31, 2005</u>	<u>\$10,912.52</u>
<u>Receipts 2/1/05-4/30/05:</u>	
Membership dues- New and Renewals	\$ 805.00
Plaques (Ebay listing and postage)	\$ 254.29
Closing Balance Plus Receipts:	\$11,971.81
<u>Disbursements 2/1/05-4/30/05:</u>	
Plaque expenses	\$ 85.56
Website fee	\$ 450.00
Postage	\$ 145.93
Newsletter	\$ 876.55
Radisson Airport Hotel Providence (deposit)	\$ 500.00
Disbursements Total:	\$ 2,058.04
<u>Closing Balance Plus Receipts:</u>	<u>\$11,971.81</u>
Total Disbursements:	<u>\$ 2,058.04</u>
Checkbook Balance 4/30/05	\$ 9,913.77

Auction 2005

Submitted by Tim Sullivan

Many fine pieces of Royal Bayreuth have been consigned to the 2005 RBCC Auction. The auction will have a very nice cross section of pieces available for our members.

The Club is still seeking more pieces to make the auction a wonderful opportunity for members to purchase pieces for their collections. To that end, the commission structure has been modified to allow those members who wish to consign rare pieces or larger numbers of pieces to pay a lower commission rate. If a member's sales total more than \$3000, the consignment fee will be reduced to 5%. If the member's sales are less than \$1000, the commission rate will remain 10% and if the member sales are between \$1000 and \$3000, a commission of 7.5% will be charged.

These changes should provide the members with a larger variety and more rare pieces at the auction. The goal of the auction is three fold. The first is to give members the opportunity to purchase RB at auction and the second is to allow members to sell their RB. The last is that the Club can add funds to the treasury for the use of all the members. The commission formula should attempt to satisfy all of the above. We hope we have done that.

If you are interested in consigning pieces to the auction, please contact either Bob McCaslin or myself as soon as possible. Bob and I would like to have all the pieces consigned in July. At this time we have over eighty pieces promised, so don't delay.

Hospitality Help for your Host Committee

We believe an important part of the convention for many members is the hospitality room. This is where members gather to relax, snack, catch up with old friends and make new ones.

The hospitality room at this year's convention will offer the usual variety of goodies to drink and eat including coffee, tea, hot chocolate, water, soft drinks, juices, cider and salty snacks, fruit, sweets, etc. We are fortunate that the hotel provides a wide assortment of items for a continental breakfast in the morning as well as hors d'oeuvres and cookies in the evening. Members are encouraged to grab a plate of goodies and bring it to the hospitality room.

Many members have asked what they can do to help the host committee with the hospitality room.

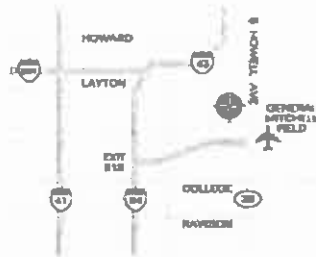
Some members make a tradition of bringing special goodies for the hospitality room. Others prefer to make a monetary contribution to help defray the cost of the hospitality room. Some members like to volunteer to staff the Hospitality room for an hour or two. Anything you do will be appreciated by your host committee and don't feel you have to limit yourself to one.

If you are planning on bringing some goodies for the Hospitality room, please let us know so we can plan to "fill the gaps". If you are making a monetary contribution, send it to Carolyn Church with a note indicating it's for hospitality. If you can staff the hospitality room for a couple of hours, let Chris, Steve, Judy or Ken know.

Thanks for your help.

2006 CONVENTION: September 21-24

Four Points Sheraton • Milwaukee Wisconsin



- Conveniently located directly across from Mitchell International Airport.
- Complimentary 24 hour airport transportation
- Ten minutes from downtown and lakefront festival park
- high speed internet access
- heated indoor/outdoor pools and 24 hour fitness center
- In room coffee makers, refrigerators, irons/ironing boards and hairdryers.

R.B.C.C Convention - September 22 - 23 - 24, 2005

Submitted by Steve Bartlett

The Radisson Airport Hotel
2081 Post Road
Warwick RI 02886
Reservations: 401 739-3000
Web site: www.radisson.com/warwickri

Room cost \$109.00 plus tax

Reservations must be made directly with the hotel in Warwick to get the RBCC discount. This is a small hotel so make your reservation early to be assured of a room. The cut off date for guaranteed hotel reservations is August 31st. You can make a reservation after August 31st and be guaranteed the RBCC rate if space is available. This is a small, intimate 111 room hotel so we will be all together on two floors. We encourage members to bring items for display in their rooms and for sale. Small dogs are permitted but should be caged when left alone in the room. You can get a table for display in your room for NO CHARGE. Make the request when you register or when you check in. If you have some special items for the auction, please contact Tim Sullivan at (585) 243-2967 or email tenebrous@aol.com.

The hotel is 5 minutes from the T. F. Green Airport so you can call for free transportation. When you check in, ask for directions to the hospitality room (The Greenwood room) so you can register and pick up your Goodie bag. Registration will start on Thursday, September 22 at 12:00 noon. Please

complete the pre-registration form that is also in this newsletter.

Many members are planning to come in early or stay after the convention. Information on local attractions will be provided in the Goodie bags, but if you want some ideas ahead of time to plan, please contact Steve and Chris Bartlett (401) 885-5889 or dufferdog@aol.com

The hotel rate includes a complimentary breakfast each morning consisting of coffee, tea, hot chocolate, juices, toast, cold cereal and an assortment of home made granola bars, muffins and breakfast pastries. These will be in the lobby but fill a plate and join us in the hospitality room. In addition the hotel will provide cheese and crackers Thursday night and there will be hors d'oeuvres in the lobby on Thursday and Friday. The hotel also provides home made cookies in the lobby every night.

The Johnson and Wales Radisson Hotel is a teaching hotel for students. The restaurant is run by the Culinary Institute and you will find the food and meals to be outstanding.



Submitted by Steve Bartlett



Hi R.B.

This will be a fabulous convention - so much to see and do, and lots of good food. And great buys for your Bayreuth collection too! Get your reservation today!

POST CARD

To: Roy L.B. Ruth

1794 Pensa Lane

Banana MI 12345

From Your New
England Host.

Ebay Prices

Submitted by: Becky Conrad



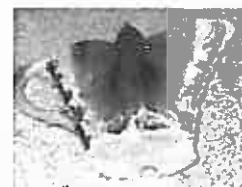
Horse Chamberstick
\$1,151.16



Horse Milk Pitcher
\$1,262.00



Rooster Double
Headed Sugar
\$249.50



Open Winged
Butterfly Milk Pitcher
\$244.50



Purple Grape Demi
Cup and Saucer
\$330.00



Devil and Cards
Humidor
\$932.00



Figural Horse Relish Dish
\$828.99



Red Devil Ashtray
\$214.50



Little Boy Blue Coal
Scuttle \$186.29



Little Jack Horner Covered
Trinket Box
\$125.00



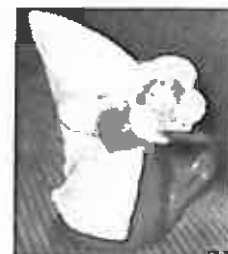
Demi Chocolate Tea
Set, Horses
\$440.00



Cockatoo Creamer
\$220.27



Sunbonnet Shield
Back Candle Holder
\$228.79



Milk Maid Milk
Pitcher
\$365.00



Figural Horse Humidor
\$3,173.45



3 1/4" tall Coffee Pot Hunt
Scene with Dogs
\$57.99



Devil and Cards Lemonade
\$293.16



4" Platypus Creamer
\$677.77



Jack and Hill
Shaker
\$47.02



Dice (Die) Demi Cup,
Lobster Handle
\$3,173.45



Figural Red Poppy
Compote
\$155.80



Sunbonnet Miniature Cheese
Dish
\$505.65



Sunbonnet 3" tall Covered
Powder Jar
\$341.99

Ebay Prices Continued



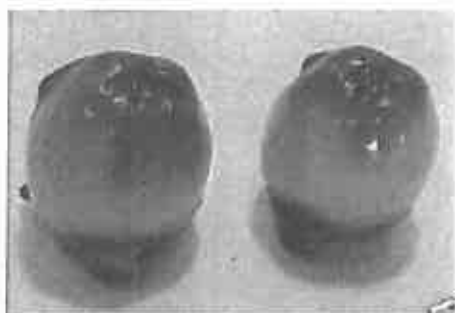
Rose Cream and Sugar Bowl
\$430.00



Sunbonnet Babies Child's
Six Cups and Saucers
\$461.99



Figural Radishes Footed Nut Set
\$209.28



Apple Salt and Pepper Shakers
\$255.00



Jester Tobacco Jar
Humidor
\$1125.00



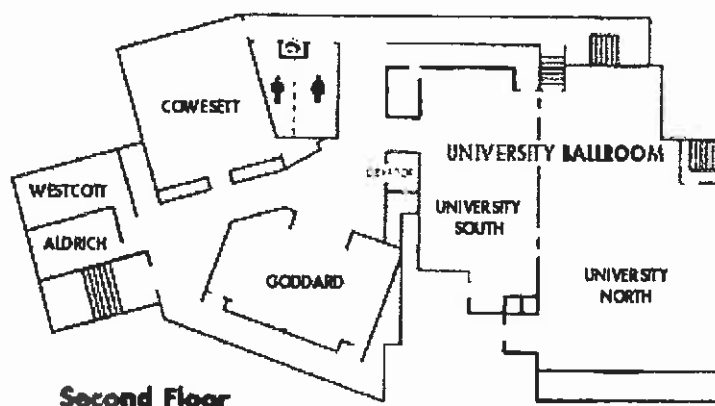
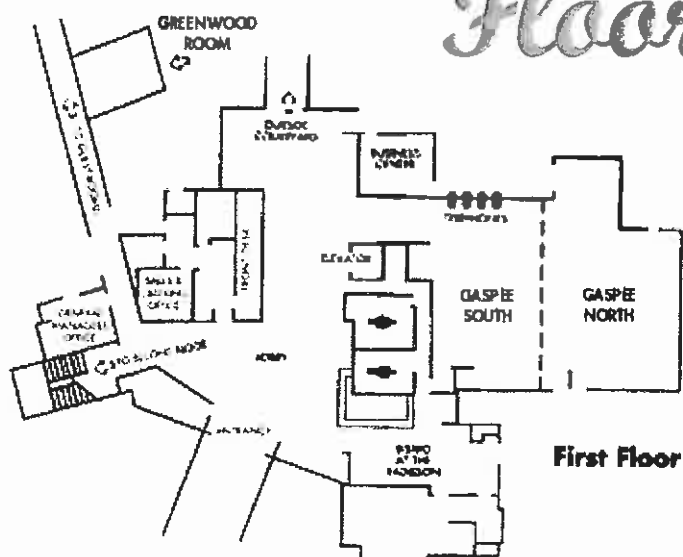
Figural Radish Open Salt
\$155.00



Sunbonnet Milk
Pitcher
\$237.50



Radisson Airport Hotel Meeting and Events Floor Plans



Top Ten (10) Reasons (More Or Less) To Attend The Royal Bayreuth Convention In RI In September, 2005

- Fall is the most beautiful season to visit RI and New England (It rarely snows in September and the lakes probably won't be frozen)
- Create and renew life-long friendships with fellow RB collectors
- Tour the Johnson and Wales Culinary museum and see other fantastic attractions in and around the state.
- Listen to several interesting presentations about antiques and Royal Bayreuth porcelain and other things
- Participate in or just watch an exciting auction of rare and unusual Royal Bayreuth treasures
- "Shop and Swap" for Royal Bayreuth treasures in member rooms (It's amazing what members find and bring to sell)
- Win one of seven beautiful New England/New York baskets filled with local and regional items
- Be dazzled by a dessert presentation from a Johnson and Wales Chef and eat the presentation
- Dine on a sumptuous banquet meal prepared by the chefs and students at the Johnson and Wales Culinary Institute and hear a good old-fashion, hand-clapping, foot-stomping banjo group.
- Enjoy an Ice Cream Social with music by a talented local jazz group.
- Watch your host committee be silly, work hard and wear unusual theme hats
- Receive a hospitality bag filled with usual, unusual, useful and some useless items
- Enjoy good old fashion New England cooking in a wide variety of nearby, local restaurants
- Visit the hospitality room to relax and enjoy a variety of soda, juice, water, cider, sweet treats, salty snacks, breakfast foods and fruit)
- Easy driving directions to the hotel that is located 5 minutes from the airport if you fly in
- Learn what a Quahogger really is
- Come early and see the sights, play golf, visit the mansions, enjoy the beaches, tour New England, take a sail in Narragansett Bay and relax

Collector's Corner

Chris & Steve Bartlett

TELL US ABOUT YOURSELF

We are Chris and Steve Bartlett from East Greenwich, RI. We have 3 grown children and our first grandchild is due in October. Completing our household are 2 dogs, and a small flock of ducks. Steve owns his own Human Resource consulting business, Bartlett Associates, and Chris works in the Children's Department at Barnes and Noble Bookstore.

WHAT TYPES OF ROYAL BAYREUTH DO YOU COLLECT?

We primarily collect the figural creamers, with our favorites being animals and the fruits and flowers, although we also have examples of lots of other types.

HOW DID YOU GET STARTED IN COLLECTING ROYAL BAYREUTH?

About 12 years ago we bought a cow creamer and thought it would be fun to collect different animal and

bird creamers – we called them "spewers". Soon we had a collection that included Japanese, Czech, Austrian, and German pieces, old and new and in different sizes. In an antique shop one day, we asked to see an elk creamer and were told by the owner that this was a Royal Bayreuth and that the company made other animals. So our curiosity led us to Mary's book, then to our first convention in Syracuse, and the quest for as many of the different animal figurals we could find to fit our budget! A crow was our first purchase.

WHAT IS YOUR FAVORITE ROYAL BAYREUTH PIECE?

Chris says her favorite is squirrel milk – it doesn't raid the bird feeder like the real ones do! Steve is fond of the gray horse creamer that appears in Mary's second book.



Touring The Culinary Archives & Museum At Johnson & Wales University

A special treat is in store for us at this year's convention. On Friday September 23rd we will have a guided tour of this fascinating museum which features 5000 years of culinary history in an historic waterfront building. The culinary museum, the largest in the country, includes exhibits such as a classic diner, kitchen stoves from the open hearth to the microwave, kitchen gadgets, cookbooks, a gallery of great chefs, and a roadside tavern. With nearly half a million items in its collection, this museum has something for everyone. If you like to cook or just like to eat, this will be an enjoyable and educational tour. Visit the website at www.culinary.org to read more about this museum.



Little Rhody Facts, Part II

- The RI State capitol, completed in 1904, is the second largest unsupported white marble dome in the world. (The largest is the dome of St. Peter's Basilica in Rome)
- Newport RI is the home of the Newport Casino which is the International Tennis Hall of Fame.
- The official State drink in RI is coffee milk. (Milk flavored with syrup, similar to chocolate milk but with a coffee flavor)
- Quahogs are large hard-shelled clams found in Narragansett Bay. They are used to make "Stuffies" and Quahog chowder. The Indians used the shells for money or "wampum." Stuffies are quahogs that have been removed from the shell, chopped up, mixed with cracker crumbs and spices put back in the shell and baked. Served as an hors d'oeuvre.
- RI has 384 miles of shoreline.
- 250 Rhode Islands would fit into Texas.
- RI is one of the most densely populated states but 60% of the State is covered by forest.
- The Quonset hut was invented and originally built at Quonset-Davisville Naval Center in RI, home of the Seabees.
- One of the oldest libraries in the US is the Providence Athenaeum.
- Katherine Gibbs started a chain of secretarial schools in 1911 in Providence, RI in a two-room school with one (1) student.
- RI has five groups of Native Americans, the Narragansetts, the Wampanoags, the Nipmucs, the Niantics and the Pequots.
- The US Navy was founded in East Greenwich, RI by Abraham Whipple.
- Julia Ward Howe, a RI native, founded the New England Woman Suffrage Association, worked for women's rights, authored the Battle Hymn of the Republic and died in Newport, RI in 1910.
- The oldest synagogue in the US is in Newport, RI.
- Mr. Potato Head was invented in 1953 by the Hasbro Toy Company and was the first toy to be advertised on TV.

Holy Grail of Scenic Royal Bayreuth

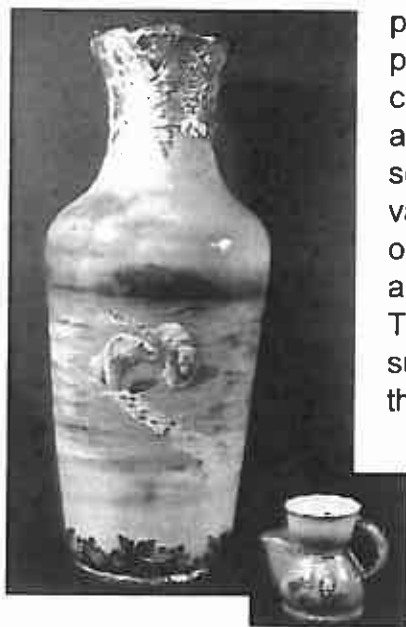
Al and Wanda Friedrich

Could this 15¾ inch vase be the "Holy Grail" of the Scenic Royal Bayreuth Polar Bear collection, or could this two inch Scenic Polar Bear Shaving Mug be the one? Both are pictured.

It's truly 15¾ inches tall (Blue marked) Royal Bayreuth Polar Bear Vase with a reticulated top surrounded with extremely large gold decorations, including embossed hanging grape clusters, vines and grape leaves.

Even the base of the vase is surrounded with decorations of embossed gold grapes, vines and grape leaves. Naturally the Polar Bear scene is in full detail in the center.

This was bought from a lady's collection, who lived to be 100 years old in Mankato, Minnesota. From the knowledge I was told, this vase could either be a



promotional piece, or one custom made for an individual. IF so, this particular vase could be the only one made, and is very rare. The appearance surely shows that the factory went to extremes to make it very beautiful, and attractive according to it's giant

size, and the fabulous amount of gold decorations.

The two inch Royal Bayreuth Scenic Polar Bear Shaving Mug is also very unique, because of it's extreme small size and shade with the Polar Bear scene in the center. It is shown to compare the height of both pieces.

Both have a very special place in our Royal Bayreuth Polar Bear Collection – but always looking for more rare and unusual pieces.

2005 Convention Reminder

We went to Rhode Island again yesterday to meet with the Bartletts and to plan a little more for the 2005 Convention.. We checked on the hotel reservations received to date and there are already 27 rooms reserved so am sending a reminder. This is not a real large hotel and suggest getting your reservation in early. Hope that you will come to the East Coast...lots of good seafood, sweets, etc...we hope to have a GREAT time. It is the Radisson Airport Hotel, Warwick RI and the number is 401-739-3000 and please identify your affiliation with the Royal Bayreuth Convention to get the special rate of \$109 plus tax...the room rate for a suite or regular deluxe room is being offered at this price...any questions email us at buckhill1@adelphia.net or the Steve and Chris Bartlett at dufferdog@aol.com.....look forward to seeing you.

Judy and Ken Stockwell

Welcome New Members

Karen Christian
2308 Gloria Street
El Cerrito, CA 94530
Phone: 510-236-6454
Email: mxkaren@wwdb.org

Maryellen & Gil Keteltas
3 Donna Drive
Walpole, MA 02081
Phone: 508-668-1279
Fax: 508-668-2238
Email: mellen02@aol.com

Wanda Reid
P.O. Box 11542
Charleston, W.V. 25339
Home Phone: 304-756-4003

RADISSON AIRPORT HOTEL

Rhode Island

2081 Post Road, Warwick Rhode Island 02886, US

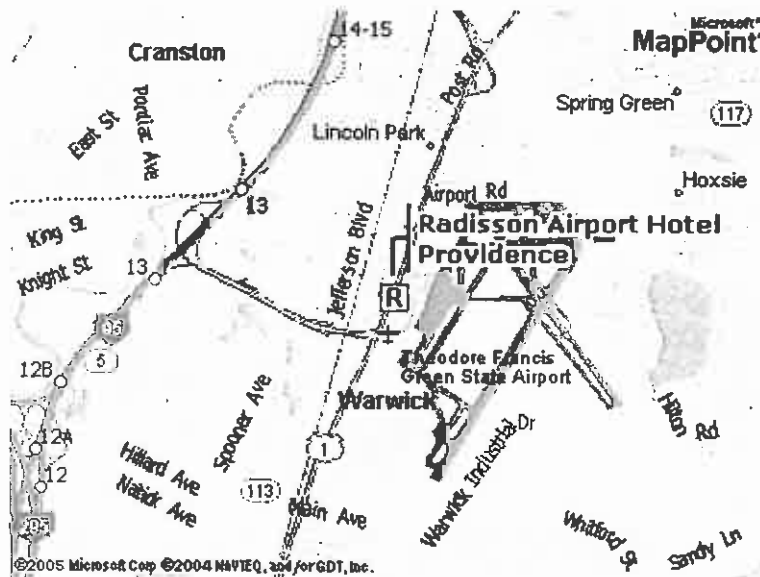
Reservations: (800) 333-3333

Telephone: (401) 739-3000 Fax: (401) 732-9309



The Radisson Airport hotel is happy to extend our hospitality with the following hotel services:

- Complimentary passes to Care New England Fitness and Wellness Center; a full service health club with heated pool and sun deck
- Complimentary 24 Hour Airport Shuttle Service to TF Green Airport
- Continental Breakfast served in the lobby daily
- Complimentary parking
- Daily newspaper delivered to your room
- In room coffee makers
- Full service restaurant serving breakfast, lunch, and dinner
- Room Service
- Safe deposit boxes at the front desk
- ATM
- Complimentary High-Speed Internet Access in lobby
- Same day laundry and dry cleaning service
- AAA 3-Diamond rating
- Handicap accessible
- Banquet facilities can accommodate groups to 400 people



2005 Convention RBCC Agenda

Radisson Airport Warwick, Rhode Island

September 22, 23, & 24

Note: The Hospitality room will open on Thursday, September 22 at 12:00 noon for registration and will be open through the 24th from 7:00 AM until 11:00 PM throughout the convention except during club meetings, programs, the auction and Banquet.

- Continental Breakfast provided by the hotel each morning The breakfast consists of coffee-tea-hot chocolate-juice-fruit-muffins-Danish-mini bagels-home made pastries-special granola bars (all homemade) Offered in the lobby but members can bring into hospitality room or back to their room.
- Cheese and crackers provided by the hotel Thursday evening
- Hors d'oeuvres in the lobby on Thursday and Friday evenings
- Home made cookies in the lobby every night

Tuesday and
Wednesday, Sept. 20 and 21
September 21 through 23

EARLY ARRIVALS AUCTION CHECK-IN

WEDNESDAY - September 21

5:30 p.m.

Barbeque at the Bartletts for early arrivals

THURSDAY - September 22

12:00 noon until 7:00 p.m. -

2:00 p.m. - 4:00 p.m. -

7:00 to 9:00 p.m. -

Registration and Welcome
RBCC Annual Board Meeting
Ice Cream Social and Jazz Combo

FRIDAY - September 23

7:00 a.m. - 8:45 a.m. -

8:00 a.m. - 8:30 p.m. -

9:00 a.m.-9:45 p.m. -

10:00 to 10:30 p.m. -

11:00 to 1:15 p.m. -

1:30 to 2:30 p.m. -

2:30 to 3:00 p.m. -

2:30 to 3:00 p.m. -

5:00 p.m. to 7:00 p.m. -

5:45 p.m. - 6:45 p.m. -

7:00 p.m. - 9:30 p.m. -

Continental Breakfast (Hotel provides)
Orientation for new members
Welcome meeting by the Host Committee & the
R.B.C.C. President
Show and Tell
Tour of J&W Culinary Museum followed by
lunch at the Hotel
Program
Move Auction Items
Member room visitation
Auction Preview
Pizza in Hospitality Room
Member Auction

SATURDAY - September 24

7:00 to 8:45 a.m. -

9:00 a.m. to 10:30 p.m. -

10:30 a.m. to 11:15 p.m. -

11:45 a.m. - 1:00 p.m. -

1:15 p.m. - 2:15 p.m. -

3:00 p.m. - 5:00 p.m. -

3:00 p.m. - 9:00 p.m. -

7:00 p.m. - 9:30 p.m. -

Continental Breakfast (Hotel provides)
Business Meeting
PROGRAM
Lunch (Clam Chowder/soup and ½ sandwich
Chef dessert
Program
Board Meeting
Member room visitation
Banquet and Entertainment (President's farewell)