



## CONVENTION 2005



### IN THIS ISSUE

<i>President's Message</i> .....	2-3
<i>Secretary's Message</i> .....	4
<i>Editor's Note</i> .....	4
<i>Welcome New Members</i> .....	4
<i>Club Historian's Message</i> .....	5
<i>Treasurer's Report</i> .....	5
<i>Auction Report</i> .....	5
<i>Ebay Prices</i> .....	6
<i>Collector's Corner</i>	
<i>Harold and Judy Doll</i> .....	7
<i>2006 Convention</i> .....	7
<i>2005 Convention Review</i>	
<i>By Chris Bartlett</i> .....	8
<i>Barbecue at the Bartletts</i>	
<i>By Chris Bartlett</i> .....	9
<i>Hospitality Room</i>	
<i>By Chris Bartlett</i> .....	10
<i>Kudos</i>	
<i>By Larry Brenner</i> .....	10
<i>Sailing on Narragansett Bay</i>	
<i>By Chris Bartlett</i> .....	11
<i>Poppy Display</i> .....	11
<i>Show and Tell</i>	
<i>By Judy Stockwell</i> .....	12-13
<i>Royal Bayreuth Auction</i> .....	13
<i>Newsletter Liaison</i>	
<i>By Chris Bartlett</i> .....	13
<i>Welcome Meeting Minutes</i> .....	14
<i>Annual Board Meeting Minutes</i> .....	14
<i>Annual Business Meeting Minutes</i> ..	15
<i>Board of Directors Minutes</i> .....	16
<i>Missing Part Column</i> .....	17
<i>Ice Cream Social</i>	
<i>By Chris Bartlett</i> .....	18
<i>Room Viewing</i> .....	18
<i>Convention Programs</i>	
<i>By Chris Bartlett</i> .....	19
<i>Club Member Surgeries or Illness</i> ....	19
<i>Banquet</i>	
<i>By Chris Bartlett</i> .....	20-21
<i>Trip to the Culinary Museum</i>	
<i>By Chris Bartlett</i> .....	22
<i>Touring the Varnum Armory</i>	
<i>By Chris Bartlett</i> .....	22
<i>2005 Raffle Baskets</i>	
<i>By Judy Stockwell</i> .....	23
<i>Auction Results</i> .....	24-25
<i>A Rose is a Rose</i>	
<i>By Tim Gaudet</i> .....	26
<i>Royal Bayreuth Fundraiser Plaques</i> ..	27
<i>Alameda, California 2006</i> .....	28

# Royal Bayreuth Collectors Club

## President:

**TIM SULLIVAN**  
5941 Barber Hill Road  
Geneseo, NY 14454  
585-243-2967  
tencbrous@aol.com

## Vice President:

**STEVE BARTLETT**  
1320 Waterford Drive  
East Greenwich, RI 02818  
401-885-5889  
dufferdog@aol.com

## Treasurer:

**CAROLYN CHURCH**  
110 Blackwood Street  
Beaver Falls, PA 15010  
724-846-4526  
JKC110@comcast.net

## Secretary:

**KAREN CHURCH**  
110 Blackwood Street  
Beaver Falls, PA 15010  
724-846-4526  
JKC110@comcast.net

## Executive Board of Directors:

**TERRY ANDERSON**  
1734 Telemark Drive  
Rockford, IL 61106-6614  
815-397-4189  
tande4343@aol.com

**JANET BELCHER**  
256 Pinkerton Court  
Marion, IN 46952  
765-664-1467  
janalbel@aol.com

**BECKY CONRAD**  
12355 N. Upper Lakeshore Drive  
Monticello, IN 47960-4748  
574-583-3002  
becky@bethsantiques.com

**PAUL STRATMAN**  
7814 East MacKenzie Drive  
Scottsdale, AZ 85251  
480-423-9776  
pstratman@SHC.org

**KAT THACKER**  
311 West Drayton  
Ferndale, MI 48220  
248-545-0392

## Historian:

**JUDY STOCKWELL**  
45 Concord Street  
Petersborough, NH 03458  
603-924-3539

## Editor:

**LINDA TITUS**  
P.O. Box 983  
Durant, IA 52747-0983  
563-785-4438 Fax 563-785-4673  
imagesinink@iowatelecom.net



# President's Message

By Tim Sullivan, RBCC, Inc. President

Let me introduce myself and tell you how happy I am to be able to serve as President of the Royal Bayreuth Collector's Club.

My wife, Jane, and I live in the rural town of Groveland in Upstate New York, twenty-five miles south of Rochester. We collect shoes, salt and pepper shakers, and a cross section of the RB figural pieces. There is very little we would not collect if we had more room for display. We have enjoyed being members since 1996 and have attended the last nine conventions. For the last two years I have served as vice president and have worked with Bob McCaslin supervising the RBCC auction. I am a retired school administrator and now work full time as Jane's assistant.

Mary McCaslin had spinal surgery on November 3rd. She is recovering well and should be up and around by the time you receive this newsletter. We wish Mary a speedy recovery.

The RBCC had a wonderful convention in Providence and I want to take this opportunity to thank Chris and Steve Bartlett, Judy and Ken Stockwell and Larry Brenner for all the hard work. A measure of the success of the convention is the number of attending members who want to know when are we going back to RI. The hotel staff was attentive to every detail and the food was unrivaled. The excellent presentations by Tim Gaudet and Daniel Soules were both very informative. The extra activities were well received and Steve arranged for perfect weather for our sail on

Narragansett Bay. A job very well done. Jane and I look forward to traveling to Providence again.

With Board approval the contract for the Milwaukee convention has been renegotiated to improve the agreement between the Sheraton Hotel and the RBCC. Included in the changes is the use of a much larger room to replace the eight hundred square foot room for meetings, programs and auction that was in the original agreement. The dates have also been changed to allow for more members to attend and provide a better experience. The new dates are October 13 and 14. The original dates fell on Rosh Hashanah and also would have had our convention sharing the facilities with four weddings. Historically the RBCC has held the convention in both October and September. For the last several years the convention has been scheduled in September but it would be better to explore moving the convention to fit the calendar and the needs of the the RBCC. Circumstances this year necessitated the change to October. Other changes in the contract included table rental procedures, closing dates for registration at the guaranteed rate, closing dates for registration credit to the RBCC toward minimum room number, corkage fees which are the charges for food brought into the hospitality room by the RBCC, adjustment by the hotel to allow small pets, and allowing for additional attendees at the ice cream



Continued on page 3

*Continued from page 2*

social. There were several other minor changes more clarification than substantive.

Two reports are due to the Board in January. Paul Stratman is searching for a site in the Phoenix area. This is the first step to determine if it is feasible for the RBCC to move a convention westward. Becky Conrad is also looking at Midwest sites for future conventions. At the Milwaukee convention the RBCC will attempt to identify and approve at least two sites for 2007 and 2008. It is imperative that we have sites identified for at least two years. If any members have site suggestions, please contact any officer or board member.

At the convention the Board of Directors also voted to recommend an increase in the dues and that recommendation will be made to the general membership at the Milwaukee convention. The attending members at the Milwaukee convention must approve the increase before it can be implemented. More information will be included in future editions of the Newsletter.

The Board also approved the continuation of the convention registration fee at twenty dollars per member in attendance. This fee is used to offset the cost of the conventions. Both in Chicago and Providence the host committees attempted to keep costs to a minimum and increase money earned by silent auctions or drawings for the state baskets. The goal is to make the conventions as cost effective as possible.

One of the most anticipated times of each convention is the auction. This year Rollie and Ruth Rosenboom and Sandy Heerhold again handled the sale of the auction pieces. Alvin

Cappel, Janet Belcher, and Roger Lundquist kept the pieces organized during the auction. Roger Lundquist, Tim Gaudet, Bob Gollmar, Sandy Heerhold and Jane Sullivan checked in the pieces on Thursday and inspected and prepared them for the auction. During the auction Steve Bartlett, Karen Church and Jane Sullivan bid the reserves for consignors. Without their hard work the auction would not have been possible.

With the economics of collecting RB in today's market place, the continued success of the auction is not a given. Each year it is more difficult to find members willing to consign pieces of RB to the auction. Without the generosity of a very few members there would be no auction. In order to encourage members to consign pieces, the Board made two changes to the auction procedures. The 'no sale fee' will now be ten dollars on each piece that does not meet reserve. Also there will be a buyer's premium of five percent that will replace the present system where the consignors paid the commission. The buyer's premium again is to encourage members to consign pieces. I know that there are some members that have strong opinions concerning auction companies that charge a buyer's premium. We are all members of the RBCC and if we want to continue to have an auction that contains interesting pieces then we need to make consigning as attractive as possible. Even with these changes additional members need to consign to the auction if we are to continue at the present level. The auction is an important source of revenue that offsets costs that otherwise would have to be raised elsewhere. That said, we as members

need to support the auction both as consignors and buyers.

In recent years the RBCC Newsletter has not been as effective as it could be. After discussing the Newsletter with board and general members I have appointed Chris Bartlett to act as Newsletter Liaison. Chris will be responsible to search out topics and authors for articles. Please help Chris and the RBCC if you are contacted to assist with ideas, information or articles.

I nominated and the Board approved Judy Stockwell as the chairwoman of the nominating committee. Judy has asked Nancy Brandenburg to help identify members to be nominated to fill open Board seats at the Milwaukee convention. If you are interested in serving or want to recommend another member for consideration, please contact Judy Stockwell or Nancy Brandenburg.

If you have any questions concerning issues with the RBCC, please contact me by email or telephone.

**REMINDER**

**Royal  
Bayreuth  
Collectors  
Club  
2006 Dues  
are Due**

## Secretary's Message

Karen Church, Secretary R.B.C.C.



Hi Everyone,

I can't believe it's time for our winter newsletter. We had 74 degree weather this past weekend and thunderstorms. I'm not complaining because it could be snow very soon. This is the convention newsletter and I'm sure there are all kinds of pictures and articles. We had such a nice time in Providence. Royal Bayreuth had another great group of hosts that worked really hard and had everything well organized. The weather also cooperated and luckily, we missed all of the flooding that happened a short time afterward.

My secretary's report at convention

went as follows. As of convention, we had a total membership of 183. I have since had 3 new members join. There were 22 new members that had joined since the 2004 convention. We had 24 members removed from the roster. The first five states (OH. & PA. tied) with the most members are: California-23  
Illinois- 19  
Ohio-11  
Pennsylvania-11  
Massachusetts- 9  
New Jersey- 8

I am letting you know that it was voted by the board **not** to have the quarterly free drawing winners so you

will not see it in the newsletter anymore. We will honor the ones that have already been chosen for their 2006 dues to be free and those people are McClurg- Canada, Rausch- N.Y., Lakes- Iowa, Miller & Waldfogel- MN. , Lukosaitus- WI. , and Lands- MS.) **I am accepting the \$30 dues for 2006. I will be mailing out reminders very soon. Please mail it back to me as quickly as possible. I know how hectic this time of year gets, and it saves you and me from 2-3 reminder mailings!!!!**

Hope you all have a safe and happy holiday season!

## Editors Note

### ROSTER UPDATES & NEWSLETTER CORRECTIONS

Harriet & Jerry Lavine have a new email address:

**HLJL1000@yahoo.com**

Paul Stratman:

Email at Office: **pstratman@shc.org**

Email at Home: **paulstratman@cox.net**

Carolyn Church:

Email: **jkc110@comcast.net**

Larry Brenner:

Address:

1400 Front Street

Apt. 2

Manchester, NH 03102

## Welcome New Members

Carol C. Allred  
3404 Glenwood Ave.  
Wichita Falls, TX 76308  
**rallred@nets-online.net**

Marlene Curry  
7126 Judith Ave.  
Alexandria, VA 22315  
**curryexcavation@wmconnect.com**

Heather & Ronald Faille  
11209 North Club Drive  
Fredericksburg, VA 22408  
**rjfhjt@adelphia.net**

Nancy King  
77 Anawan St.  
Brockton, MA 02302

Judith & Bernard Newman  
1310 Eagle Road  
New Hope, PA 18938  
**bn Newman@erols.com**

Adel, Herbert, & Matt Savitz  
100 Old Hyde Road  
Weston, CT 06883  
**msavitz@optonline.net**

Betty Stromberg  
14552 Via Montoya  
Sun City West, AZ 85375  
**bstrom777@cox.net**

Dick Taber  
PO Box 444  
Durant, IA 52747  
**summkit@iowatelecom.net**

David Weddington  
2702 Albany Ct.  
Murfreesboro, TN 37129  
**predicta@usit.net**



# Club Historian's Message



Judy Stockwell, Historian R.B.C.C.

Thanks to all who have sent pictures and articles to me in the past. I hope that you will all continue to keep your eyes open for more. We still do not have anything in the historian books regarding the clubs "Winter Gatherings." It would be nice if anyone has pictures or information regard-

ing those gatherings...please send them to me by computer at buckhill1@adelphia or my mailing address:

Judy Stockwell  
45 Concord Street  
Peterborough, NH 03458

Thank you in advance.

## R.B.C.C. Treasurer's Report

Carolyn Church, Treasurer R.B.C.C.

September 17, 2004-September 16, 2005

August 1, 2005-October 31, 2005

Closing Balance- July 31, 2005 \$ 9,080.36

### Receipts:

Balance 9/16/04	\$10,043.05
Membership Dues (New and Renewals)	\$ 5,060.00
Convention Registration and Meal Fees	\$ 4,099.00
Auction (2004)	\$35,395.00
Plaques	\$ 1,012.72
Hospitality Room (2004)	\$ 563.00
Hospitality Room (2005)	\$ 100.00
<b>Balance 9/16/04 Plus Receipts</b>	<b>\$56,272.77</b>

### Disbursements:

Convention Expenses:	
N.W. Chicago Wyndham (2004)	\$ 2,723.89
Pizza Party (2004)	\$ 517.44
Lanyards and Decorations (2004)	\$ 330.00
Hotel Room for Auctioneer (2004)	\$ 145.81
Radisson Hotel (2005-deposits)	\$ 1,500.00
	\$ 5,217.14

Postage: \$ 184.45

Supplies: \$ 74.34

Hospitality Room (2004) \$ 525.01

### Auction:

Net Proceeds to Sellers \$ 32,888.25

Plaque Expenses (E-bay Fees, Postage): \$ 183.55

Entertainment (2004): \$ 250.00

Newsletter: \$ 5,786.59

Website: \$ 450.00

Advertising: \$ 379.02

### Miscellaneous:

Awards \$ 204.37

Northfield Insurance Agency (Bond for Treasurer) \$ 170.10

\$ 374.47

**Disbursements Total:** \$46,312.82

**Balance 9/16/04 Plus Receipts:** \$ 56,272.77

**Total Disbursements:** \$ 46,312.82

**Checkbook Balance 9/16/05:** \$ 9,959.95

### Receipts 8/1/05-10/31/05

Membership Dues	\$ 410.00
Convention Fees	\$2,659.00
Plaques	\$434.44
Hospitality Room (2005)	\$689.50
Auction	\$38,190.00
<b>Closing Balance plus receipts</b>	<b>\$51,463.30</b>

### Disbursements 8/1/05-10/31/05

Plaques (postage, E-bay fees)	\$ 64.99
Newsletter	\$1,410.14
Supplies	\$ 49.34
Entertainment	\$500.00
Postage	\$19.11
Miscellaneous	
Northfield Insurance Agency (bond)	\$170.10
Convention Expenses	
Award Plaques	\$ 61.00
Office Services	\$ 22.00
Program Speaker	\$100.00
J & W Culinary Museum	\$ 164.00
Radisson Hotel	\$1,435.39
Convention Refund	\$ 150.00

Auction  
Seller's profits returned \$35,340.36

Hospitality Room  
Supplies, food, decorations, welcome sacks,  
State baskets \$ 1,025.16

**Total Disbursements** \$40,511.59

**Closing Balance Plus Receipts** \$51,463.30

**Total Disbursements** \$40,511.59

**Checkbook Balance 10/31/05** \$ 10,951.71

### 2005 Auction Report

Total Receipts:	\$38,190.00
Returned to Sellers:	\$35,340.36
Profit for R.B.C.C.:	\$2,849.64



# EBAY PRICES

*Submitted by: Becky Conrad*



Little Miss Muffet Bell  
\$769.99



Multi Colored Maple Leaf Pitcher  
\$100.00



Chanticleer Creamer  
face under bill  
\$1725.00



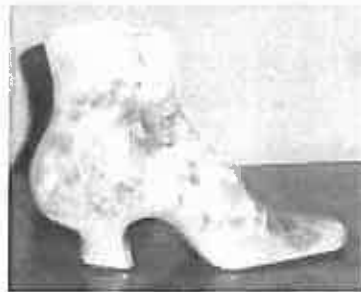
Nouveau Figural Woman  
Center Bowl  
\$1016.16



Red Clown  
Humidor  
\$406.00



Owl Creamer  
\$100.00



Chrysanthemum Shoe  
\$360.00



Little Boy Blue  
Watering Can  
\$503.99



Sunbonnet Ewer  
Creamer  
\$218.55



Red Devil Ashtray  
\$899.99



Brown Trout Milk  
Pitcher  
\$172.50



Rooster Water Pitcher  
\$1275.00



Little Bo Peep Scuttle  
\$263.50



Large 11" Tomato Bowl  
\$24.51



Rose Toothpick Holder  
\$311.99



Calico Cat  
Creamer  
\$202.50



Brown Bear Milk  
Pitcher  
\$2735.16



Jester Candle  
Holder  
\$561.60



Snake Creamer  
\$1513.00



Snake Milk Pitcher  
\$2524.99



Snake Water Pitcher  
\$5555.55





# Collector's Corner

Harold & Judy Doll

## TELL US ABOUT YOURSELF.

We are Harold and Judy Doll. We're a retired couple living in Lake of the Ozarks, Missouri. We love to travel and Harold enjoys playing golf. We have two children and no grandchildren. Our son lives in California and we have recruited our daughter and son-in-law to Missouri.

## WHAT TYPES OF ROYAL BAYREUTH DO YOU COLLECT?

All types! We have been collecting for about 2 years and have about 120 pieces. Most have been purchased on EBay. I'm starting to run out of room.

## HOW DID YOU GET STARTED IN COLLECTING ROYAL BAYREUTH?

Harold's sister Linda is to blame. And we love her for it. She purchased a box of junk at a garage sale for \$.50. In that box was a piece of Royal Bayreuth. She sold the piece on EBay for \$1,300. That's all it took for us to start our research into the Royal Bayreuth world.

## WHAT IS YOUR FAVORITE PIECE IN YOUR COLLECTION AND WHY?

Judy says "Old Ivory" – the pieces speak for themselves – how beautiful they are. And I love roses – I have 3 pieces. Harold's favorite is Corinthian.

# 2006 CONVENTION: OCTOBER 12~14 FOUR POINTS SHERATON • MILWAUKEE WISCONSIN

## HOTEL SERVICES

24-Hour Front Desk

Car Rental Service

Express/Video Checkout Available

Fitness Facility

Room Service

Business Services

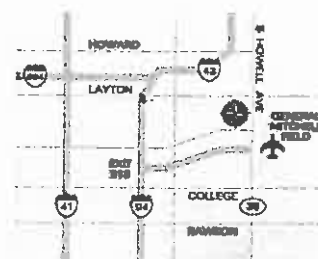
Wake-up Service Available

Outdoor Pool

Indoor Pool

Parking Available

Heated Pool



- Conveniently located directly across from Mitchell International Airport.
- Complimentary 24 hour airport transportation
- Ten minutes from downtown and lakefront festival park
- High speed internet access
- Heated indoor/outdoor pools and 24 hour fitness center
- In room coffee makers, refrigerators, irons/ironing boards and hairdryers.

# 2005 Rhode Island Convention Review

The first convention held in Rhode Island was fun for everyone who attended. In this newsletter are many articles about the various activities, with lots of great pictures taken by Paul Stratman, Judy Stockwell, and others. Here are the highlights day by day.

Many club members arrived as early as Monday to take advantage of the area by touring Newport and Providence. On Wednesday evening Chris and Steve Bartlett hosted a cookout at their home for 30 members.

Thursday morning Judy Stockwell and Chris Bartlett set up the hospitality room and by noon Karen and Carolyn Church were ready for registration. Everyone enjoyed their hospitality bags and the chance to visit with friends and to see what Royal Bayreuth items people had to show and sell. Meanwhile Tim Sullivan and his crew were busy checking in and setting up the auction items.

The board met for a meeting Thursday afternoon with President Bev Brumbaugh presiding.

The location of Legal Seafood next door to the hotel was a good choice for many for dinner, with the chance to sample the delicious clam chowder, lobster, and fish for which this area is known. The restaurant graciously offered discounts to our members during the convention.

Then the ever popular ice cream social tempted our sweet tooth with various ice creams and toppings. As a special treat we were entertained with an hour of live jazz by the nine piece "Ice Cream Social All Stars".

Friday morning started with continental breakfast provided by the hotel and a welcome meeting hosted by President Bev Brumbaugh specifically planned for new members and first time convention attendees. We hope this will be a regular feature of future conventions, with basic information on Royal Bayreuth and the club presented at this time.

Following this was our Welcome Meeting with Bev Brumbaugh and

Steve Bartlett who greeted everyone on behalf of the host committee.

After this meeting was the very popular "Show and Tell" session, when it is fun to see the different treasures members

have found.

A tour of the

Culinary museum gave us the chance to leave the hotel and see a very interesting facility. We then arrived back at the hotel for a lunch of turkey sandwiches, chips, fresh fruit, and drinks.

Friday afternoon was the first of our two programs, this one by Daniel Buck Soules who has been an appraiser on the Antiques Roadshow since 1999.

We then had the chance to preview the auction items and visit members' rooms. Pizza was served in the hospitality room so that members wouldn't need to leave the hotel for dinner and feel rushed with the upcoming auction.

And then the auction – always a high point of the convention with 147 items and the chance to see and purchase some pretty fantastic pieces.

Saturday morning was a continental breakfast followed by the annual business meeting. New officers and board members were elected. This was followed by the second program, "Selling at Auction", by club member Tim Gaudet.

Time to eat again! Lunch was a bowl of clam chowder and a half sandwich and then a demonstration by Johnson and Wales chefs on making chocolate dipped strawberries using both white and milk chocolate. We

*Submitted by Chris Bartlett*

enjoyed the tasty treats – CJ James especially recommends dipping the

strawberry in both kinds of chocolate and drizzling more chocolate on top.

Outstanding!

Saturday

afternoon provided

members the

chance for a

tour of the

Varnum Armory

and its collection

of military history. This

free activity was an interesting chance to visit another Rhode Island attraction.

The Board met again Saturday afternoon for a planning session while other members enjoyed the chance to visit rooms. Charter members Roddy and Bob Bernstein came down from Massachusetts for the day and were selling much of their collection and people enjoyed seeing them again after many years.

Saturday evening and it was time for the banquet. A delicious meal, entertainment by a banjo band, drawing for the baskets, and thanks and farewells completed the evening.

Sunday morning members had the chance for one more activity as a sail on beautiful Narragansett Bay was planned, with lunch included.

And then all too soon the convention was over. Many members chose to continue their vacation by heading to Cape Cod, Boston, and other areas in New England.

All of us who worked hard to bring the convention to Rhode Island were very pleased with the turnout. We hope everyone who came enjoyed themselves and came away with the gift of New England hospitality as well as a Royal Bayreuth piece or two!

See you next year in Milwaukee!

*"Fantastic..."*

*"The convention was THE best in every way."*

*"OUTSTANDING CONVENTION – THE HOTEL, THE BANQUET, THE FOOD, THE ENTERTAINMENT."*

*"The best autumn weather we've ever had."*

*"A wonderful time for all of us..."*

*"WE LOVED THE MANY PERSONAL TOUCHES."*



# BARBECUE AT THE BARTLETT'S



Warm fall weather was the perfect accompaniment to the cookout held on Wednesday at the home of Chris and Steve Bartlett. Over 30 members who had arrived early for the convention came for the evening get together. We couldn't have asked for more perfect weather to enjoy the deck, the pond and ducks, the food, and the friendship. Chris and Steve said it was a treat to have so many people at their house who really appreciated their "spewer" collection, which includes not only Royal Bayreuth figurals but animal creamers from around the world. Thanks too to Jane Sullivan for her delicious baked beans and "white hots" from New York which were a big hit.

*Submitted by Chris Bartlett*

# HOSPITALITY ROOM

What wonderful New England hospitality at the 2005 convention. There was no question as to the perfect theme – it had to be the lobster. This was evident throughout the hospitality room, starting with the welcoming lobster by the door. Rhode Island posters, sand and seashells, nautical items, a singing lobster, lobster aprons, lobster hats, lobster platters, and a lobster tablecloth contributed to the festive atmosphere.

The dark green hospitality bag featured a photo of the Royal Bayreuth Lobster and was filled with New England goodies - a Beanie Baby lobster with a personalized convention ribbon, a squishy lobster, lobster lollipops and Gummy lobster candy, a hand painted lighthouse doorhanger, a welcome pineapple pin, a rooster towel, personalized business cards, a pen, and much, much more.

Thanks so much to everyone who brought tasty treats for the hospitality room - no one went away hungry!

Jane Sullivan for her always popular chocolate mice, Karen and Carolyn Church for their fudge, bars, and coffee creamers, Steve Bartlett for his delicious lobster sugar cookies, Judy Stockwell for chocolate lobsters, candy and much more, Larry Brenner for the “fresh from the tree” apples, Tim Gaudet for Maine blueberry muffins and chocolate chip cookies, and Ida Parrott for the California raisins...so many good things. And thanks too to everyone who brought bags of candy, nuts, and chips, made monetary donations, and who volunteered to staff the hospitality room.

The Del's Lemonade, a Rhode Island tradition, was delicious and everyone also received a packet in their hospitality bag so they could make their own at home. Cider, cocoa, hot drinks, soda, and water were also available.

During the convention seven fabulous baskets representing each of the New England states plus New



York were on display and everyone enjoyed seeing them and buying raffle tickets to support the club. Read more about this in another article.

Judy Stockwell, Club Historian, was delighted to be able to bring all of the club scrapbooks to the convention – usually she and Ken have flown to conventions and these books are too heavy to bring. It was fun to see the evolution of the club over the years.

We were delighted with all the positive comments we received after the convention and were glad so many members were able to come and sample New England hospitality first hand. We were happy to be your hosts for the 2005 Royal Bayreuth Convention. Again thanks to everyone for your support.

Your Host Committee  
Chris and Steve Bartlett • Judy  
and Ken Stockwell

*Kudos*  *Larry Brenner*

Once again members of our club have outdone themselves in putting on an outstanding convention. Members from Steve & Chris Bartlett to Judy & Ken Stockwell, **KUDOS** on a job well done. You have worked your butts off for a year. My hope is that others who take on this task will follow your example of not missing a thing! Many, many thanks from me and I am sure all who were fortunate enough to be here.



# SAILING ON NARRAGANSETT BAY

Rhode Island is the Ocean State so it was only fitting to have a water related activity for the convention.

Beautiful warm weather continued on Sunday morning as 28 club members took a tour of Narragansett Bay aboard the Dutch sailing vessel *Brandaris*. This 63 foot ship was built in 1938 for a wealthy Dutchman and was involved in the evacuation of Dunkirk. It is now owned by a Rhode Island family and available to groups such as ourselves.

Captain Doug put the sails up and we had a wonderful time – no rough seas at all. Lobster rolls, chicken salad sandwiches, pretzels, cheese and crackers, fruit, and cookies were enjoyed by all as we sailed for 3 hours- a perfect ending to the Rhode Island convention.

*Submitted by Chris Bartlett*



*Poppy  
Display*

BY CURT HERR



# SHOW & TELL

*Submitted by Judy Stockwell*

On Friday morning of the convention we had a Show and Tell with a few members showing items they found during the year. Since I had the honors of doing the program I started off showing the items that I brought for Show and Tell. I showed a cup and saucer in a cube shape and it says "Steero" on the cup and has a gold T and lion Bayreuth mark on the bottom. After some research I found out that Steero was like our boullion and perhaps the cup and saucer date to the 1930's. I also showed a lovely white lustre looking 2 handled pot with pink roses and a blue mark on the bottom

-a  
Chocolate  
pot or  
teapot or  
invalid pot?

Larry  
Brenner  
showed an  
ashtray or  
pin dish

with the candle girl scene on the top of the dish and a raised cork on the other end of the dish. A rare find.

Tim Sullivan showed his lobster shaped shoe since the lobster was our theme for the convention. He also showed a very unusual piece that turned out to be



something he glued together from pieces of Bayreuth that have broken in the past.

Roberta Cappel showed some nursery rhyme pictures that she matted

and framed. She told us that Maria L. Kirk was an American artist whose best known commission was an early edition of Alice in Wonderland (1904-1907) in which Alice's dress is gold, not blue! She also is known for her illustrations in Heidi, Child's Garden of Verses, and the cover fronts on some of our beloved books, Anne of Green Gables, just to name a few.

Roberta went on to say that both she and Alvin were excited to find the prints with the pictures matching their

Royal Bayreuth nursery rhyme pieces.

She also showed a miniature



tomato  
tea set  
purchased  
on Ebay  
for \$7.00  
— no  
chips, no  
cracks,  
no  
hairlines,  
and NO

PAINT!! They spent \$\$\$ to have it repainted and it sits right in with their expanding tomato crop! The tea set was displayed on a lovely little child's hutch.



Karen Church showed several items. The first was a dish similar in shape to #29 in Mary's first book. This piece she found in Maryland in the spring while visiting relatives. The top part has the muff lady and the bottom left corner has a three dimensional old-fashioned skate. This dish was similar to Larry Brenner's and as she wrote to me she says that

Larry had his dish for sale and so she bought it at the convention as they seemed to go together... so both of the rare dishes live with her.



She also bought a couple pieces on Ebay. She bought a small creamer with a peacock, 4 3/4" high at the tip of the spout. It was an unusual shape. The other piece was a small sized blue and white strawflower spittoon...not in perfect condition but she thought she perhaps would never find another one. It has a "T.10" on the bottom. Perhaps it was for a lady.

She also showed a Chick water pitcher. She and her mom were

invited to the Cappel's home for a Blue Plate Special Weekend. Both Roberta and Alvin collect the blue and white strawflower design and Karen

does also. She goes on to say that they have their R.B. beautifully displayed in each room. They had a wonderful dinner all coordinated with the "blue and white" theme. Chicken cordon blue and salad with blue



cheese dressing and blue run wine and all served on the blue and white dishes.



The next day they visited with the Cappel's daughter and family and then went to an antique mall in the area.

Roberta and Alvin had lunch planned before they went in to shop. They had boxed lunches with the "Boxed T" on top of the box.. She went on to say that they were at the mall quite awhile and all of a sudden she walked over to a small cabinet in a corner and there sat the chick water pitcher with a price tag of \$49.00. Thanks to the Cappel's for having them for the weekend...one that will never be forgotten!



Harold Brandenburg showed a covered pin dish with a scene of several ladies that has not been seen before.

There were a few more items shown and you can see the pictures in the Historian Books at the next convention as well as pictures from Show and Tell over the past few years.

Thanks to all for showing and making this an important part of our

convention each year.



## ROYAL BAYREUTH AUCTION

**I am selling my collection of Royal Bayreuth, 748 pieces, many rare and hard to find items. Woody Auction will have the sale January 28<sup>th</sup> at the Sheraton 4 Points Motel in St. Louis, Missouri. Call Woody's at 316-747-2694**

**Jerry Lamb  
jlamb73129@aol.com**

## Newsletter Liaison - Chris Bartlett

To assist Linda Titus in her role as Newsletter Editor, a second position has been created. Chris Bartlett has volunteered to take the position of Newsletter Liaison. She will be coordinating the articles going into each newsletter. Please send your news to Chris at Dufferdog@aol.com or 1320 Waterford Drive, East Greenwich, RI 02818.

If you are sending a finished article via the computer, you can also send a copy at the same time to Linda Titus. Pictures can continue to be sent directly to Linda.

Each issue will include the deadline for the next newsletter so if you are writing an article please have it to Chris by that time.

The club wants to make our newsletter educational and informative as well as fun. I appreciate any suggestions as to articles you would like to see in future issues. Thanks to those members who filled out the questionnaire in the last newsletter - there were many good ideas mentioned. Let me know if you have any other thoughts. Thank you.

*Submitted by Chris Bartlett*

## ANNUAL BOARD MEETING THURSDAY, SEPTEMBER 22, 2005 2:00 P.M.

### Attendance:

Becky Conrad  
Carolyn Church  
Janet Belcher  
Bev Brumbaugh  
Karen Church  
Paul Stratman  
Tim Sullivan  
Steve Bartlett

President Bev Brumbaugh called the meeting to order. The discussion was about the agenda input for the Annual Business Meeting. Steve Bartlett is to open the welcoming meeting. Bev Brumbaugh will introduce the officers and discuss about members who are not attending convention this year due to illness (Mary and Bob McCaslin, Kat Thacker, and Elizabeth (Ebbie) Kolter).

There will be a mini orientation for new members as we have 20 new members attending this year's convention. It is recommended that officers try to attend the Friday 9/23/05 8am meeting.

Bev Brumbaugh will ask for the Treasurer and Secretary reports. Bev Brumbaugh has asked that Alvin Cappel and Sandy Heerhold do the audit for the Treasurer's books.

Tim Sullivan is to do the auction committee report.

The Nominating Committee report will be given. Positions opening up this year are for President and for Steve Bartlett's Board of Director's position (1 year). All positions will be brought before the club and voted on. The new President will then appoint someone as replacement for Steve Bartlett's Board position.

Bev Brumbaugh will also ask for an update on the sale of the R.B.C.C. plaques.

There was discussion about future convention sites. The 2006 convention is in Milwaukee, Wisconsin and where do we go for 2007? Do we go to the West Coast? Other suggestions for sites were Indianapolis, Cedar Rapids, Columbus. It was also discussed about the importance of showing people what to do, how to get the best deals possible with the hotels, and the need for someone to be in that city to do the hosting for the convention. Possible 2007 sites are Rochester, N. Y. Do we want to go to the East Coast again? Paul Stratman will research the West Coast (Arizona).

Becky Conrad wants to make a statement regarding the E-bay page at the informational meeting. Steve Bartlett's questionnaire will be reviewed at the opening meeting. It was discussed having the Secretary/Treasurer positions "buddy" up with the incoming person as a way to help learn the jobs.

Carolyn Church discussed the banking rules that have changed which should make paying people after the auction a little quicker.

The Auction was discussed and next year, there will be a buyer's premium of 5% across the board. "No Sales" will be \$10 per item. The board will look at any "Suggestions, Comments and Feedback". A motion was made by Steve Bartlett and seconded by Tim Sullivan for the buyer's premium and the motion was carried.

The board discussed the Milwaukee convention. Tim Sullivan states that there is a signed contract with a cancellation of \$11,000, 120 room guarantee, \$95 per room, August 22<sup>nd</sup> cut off date, \$100 per day hospitality room, \$50 for each room for programs/auction, must

have a list for the hospitality room food, 800 sq. feet for the auction room (Tim Sullivan feels it's too small).

There are no programs yet and need to line up speakers. Bob Gollmar is doing the hospitality room and he will look into food, banquet meals for \$30 or under, food areas around the hotel or food at the hotel (lunches). Bob Gollmar will check into speakers and entertainment as the board directs. Tim Sullivan wonders if the contract can be renegotiated.

A note submitted to Karen Church by Dottie Earle was passed around to the board expressing concerns over the raise of the convention registration fee to \$20 per person. The board had no further discussion on this matter.

The meeting was adjourned.

Respectfully submitted by:  
Karen Church

## WELCOME MEETING FRIDAY, SEPTEMBER 23, 2005 9:00 A.M.

Opening greeting and welcome by host, Steve Bartlett. Steve presented club president Bev Brumbaugh with a special proclamation from Rhode Island Governor Donald Carcieri. The leather bound document will be placed in the RBCC archives.

Attendees were encouraged to take photos and send them to Judy Stockwell for the scrapbook and Linda Titus for the newsletter.

The business meeting was conducted by club president Bev Brumbaugh. He extended words of thanks to the members for attending the convention and special thanks to the hosting committee of Steve and



Chris Bartlett, Judy and Ken Stockwell, and Larry Brenner.

Welcome and introduction of the new members and first time convention attendees. They were asked to stand, introduce themselves, and mention their area of interest in Royal Bayreuth collecting.

Introduction of current officers and directors:

President — Bev Brumbaugh

Vice President — Tim Sullivan

Treasurer — Carolyn Church

Membership Secretary — Karen Church

Club Historian — Judy Stockwell

Board of Directors — Steve Bartlett, Janet Belcher, Becky Conrad and Paul Stratman, absent were Terry Anderson and Kat Thacker.

Brief reports from the officers and committee members:

Secretary Karen Church reported a membership of 183 members, 22 being new and 24 were removed from the roster.

Treasurer Carolyn Church reported a current balance in the club account of \$9,959.95

Tim Sullivan, auction committee chairman, reported that 146 quality pieces were entered into this year's auction. Tim gave an explanation of the process of reserve bidding with club members and item owners bidding the reserves with a separate three digit bid number. No item will be considered sold until the reserve is checked and verified.

Nominating committee member Alan Belcher announced the recommended officers and directors for the coming year. The committee consisted of chairman Bob McCaslin, Alan Belcher, and Sandy Heerhold. Candidates recommended:

President — Tim Sullivan - first term

Vice President — Steve Bartlett -

first term

Treasurer — Carolyn Church - second term

Secretary — Karen Church - second term

Directors — Janet Belcher, Becky Conrad and Kat Thacker, all for a second term

It was explained that Steve Bartlett's unexpired term as a director is to be filled by appointment by the new club president and board of directors.

Individual reports:

Becky Conrad made comments on the e-bay page in the newsletter. If anyone has purchased a piece of Royal Bayreuth off e-bay and doesn't want the price to be published, please notify her. She also has the RB porcelain plaques on her "my e-bay" store. There have been 56 plaques sold.

Ida Parrott reported on the planned winter meeting in Alameda, California scheduled from Wednesday March 29 to Sunday April 2, 2006. She also gave a further report on the RB jester pieces with the Charles Noke expressions, also found on Royal Doulton pieces. She shared photos from books.

Meeting concluded at 10:00 am followed by the popular Show and Tell program.

*Submitted by: Janet Belcher*

### **ANNUAL BUSINESS MEETING SATURDAY, SEPTEMBER 24, 2005 9:00 A.M.**

Meeting called to order by President Bev Brumbaugh at 9:07 am. Steve Bartlett gave a welcome greeting and outlined the day's agenda. Today will be the last chance to purchase raffle tickets for the state gift baskets.

Reports:

Audit of the treasurer books was completed by Alvin Cappel and Sandy Heerhold. The books were found to be current and correct. Motion to accept the report made by Judy Stockwell, and seconded by Alan Belcher. Motion carried by verbal ayes.

Treasurer Carolyn Church reported a balance of \$9,959.95 as of September 16, 2005. The 2004 auction receipts were \$2,506.75.

Secretary Karen Church reported a membership of 183 members, 22 being new and 24 removed from the roster.

Preliminary auction report from Friday was given by Tim Sullivan. A total of 146 pieces were in the auction, 53 were no sales, 59% of the items with reserves were not sold. The top sale was \$6400 for the chimpanzee water pitcher. The preliminary report shows sales of \$38,158 before disbursements to the consignors.

Motion made by Paul Stratman to accept all reports. Seconded by Becky Conrad. Motion carried by verbal ayes.

Bev Brumbaugh announced that there is a Host Handbook developed and available for future convention planning. The handbook was put together by Bob Gollmar from past conventions and is available upon request.

There were 9 responses to the survey from the August newsletter. There is still time to respond.

The 2006 convention is slated to be held in Milwaukee, Wisconsin with plans being made with host Bob Gollmar. Future convention sites are being researched.

Alan Belcher read the nominating committee recommended slate of officers and board of directors.

*Continued on page 16*



**Candidates recommended:**

President — Tim Sullivan - first term

Vice President — Steve Bartlett - first term

Treasurer — Carolyn Church - second term

Secretary — Karen Church - second term

Directors — Janet Belcher, Becky Conrad, and Kat Thacker, all for second terms.

Three calls for nominations from the floor were made by Bev Brumbaugh. No additional names were submitted. Motion made by Bob Gollmar to accept slate as presented, seconded by Paul Stratman. Motion carried.

Bev Brumbaugh recognized and honored the absent retiring past president Bob McCaslin who continued to serve two more years on the board as immediate past president. Bob declined a plaque as he doesn't want to put a nail into their newly painted walls. Mary McCaslin has suffered a back injury and faces surgery so they would appreciate our thanks for their commitment to the club by card or e-mail messages. Their absence is deeply felt.

Tim Sullivan was recognized for his service as club Vice President and presented a plaque. He was then sworn into office as President of RBCC by Bev Brumbaugh.

Tim Sullivan then installed the remaining officers and board of directors for the coming year. Tim extended his appreciation and thanks to auctioneer Rollie Rosenboom and Ruth and all auction helpers and consignors. He also mentioned that the black crow creamer auction piece was donated by Ken Stockwell with all proceeds going to the club.

Bob Gollmar mentioned that the

amount for dues needed to be presented and suggested that dues remain the same at \$30 for the coming year. Motion made by Steve Bartlett to keep dues at \$30, seconded by Sandy Heerhold, motion passed. Karen Church will be accepting renewals at the convention.

Motion to adjourn made by Becky Conrad at 9:50 am. Motion carried.

Business meeting was followed by informative program on "Selling at Auction: Things to Know and Things to Ask" by Tim Gaudet.

*Submitted by: Janet Belcher*

**BOARD OF DIRECTORS  
PLANNING MEETING  
SATURDAY, SEPTEMBER 24, 2005  
4:00 P.M.**

Meeting called to order by President Tim Sullivan.

Tim called for items for the agenda from board members

1. Convention fee
2. Dues for membership
3. Dates for newsletter articles
4. Communications
5. Use of Robert Rules of Order when conducting business meeting. Ask for any old business, and any new business.
6. Future conventions
7. Update on club web site
8. Publicity, advertisement, how to increase membership
9. Planning for 2006 convention in Milwaukee, Wisconsin

***FIRST ITEM OF BUSINESS:  
2006 CONVENTION***

Club is under contract at Four Points by Sheraton at Milwaukee airport for September 21-24, 2006. Tim Sullivan expressed concern that Bob Gollmar's credit card number is on the hotel account. Bob Gollmar was asked to join the meeting at 4:30 pm to discuss plans.

Bob is planning on doing the hospitality room, no meals, and no entertainment (wants to save the club money). He will look into programs and help plan a banquet.

Tim feels that there is a need to renegotiate the contract with the hotel to reduce the guaranteed room number to 100 from 120. There is a need for larger rooms for programs and especially the auction which is currently contracted for a 800 square foot room. Need to check out prices for one or two lunches to be available at the hotel plus the Saturday night banquet. No other meals and no breakfasts included. Room rate is set at \$99 per night.

Tim Sullivan made a motion giving him the flexibility to adjust the room guarantee down to less than 100 from 120, organize one or two lunches, a banquet, check out the flexibility of dates, change or delete the cut off date of August 22, 2006 for reservations to be credited to the club, and larger room needed for the auction. Motion approved by Paul Stratman, seconded by Becky Conrad, motion carried.

**ITEM TWO: POSSIBLE 2007  
CONVENTION SITES**

Bob McCaslin has investigated hotels in the Indianapolis, IN area and discussion followed. With the McCaslin's dealing with health issues, Becky Conrad said no to a convention there and Janet Belcher would only agree to help. Motion made by Bev Brumbaugh that without a host, Indianapolis, IN is not a viable option. Seconded by Paul Stratman. Motion carried.

It was suggested to explore options in the west, possibly even in California. Paul Stratman volunteered to research the Phoenix/Scottsdale,

*Continued on page 17*

Arizona area.

Tim appointed Paul Stratman as chairman to explore the western area of the U.S. and report back to the board by January 15, 2006. Tim then appointed Becky Conrad to research the mid west for possible 2007 or 2008 convention. Steve Bartlett appointed to research East Coast options for 2008 and give report to the board at the 2006 convention board meeting.

#### ITEM THREE: CONVENTION FEE

Motion made by Steve Bartlett to keep the \$20 per person registration fee for the 2006 convention. Seconded by Bev Brumbaugh. Motion carried.

#### ITEM FOUR: DUES

There was a discussion concerning the fact that dues do not cover the cost of the newsletter and have never been raised in the 11 years of the club's existence. Motion by Becky Conrad to raise dues \$10 a year to a total of \$40, limited to two members in a household, starting 2007. Seconded by Steve Bartlett. Motion carried.

#### ITEM FIVE: NEWSLETTER

Treasurer Carolyn Church announced that the club saved approximately \$700 on postage by going to bulk mailing. Some members are still having difficulty getting their newsletter. Needs some improvement and more articles. Chris Bartlett will be working on getting quality articles. The club will continue to use Linda Titus as newsletter editor. Those with a different winter address can request that the newsletter be sent to both places to insure delivery. Board in agreement to allow free ads in the newsletter by members.

#### ITEM SIX: CLUB WEB SITE

Web site needs to be kept updated and there is a need for a web monitor to field and answer questions.

#### ITEM SEVEN: WAYS TO INCREASE MEMBERSHIP

Steve Bartlett to pursue ideas. Motion made by Becky Conrad to stop giving away the free memberships by drawings, eight per year. Seconded by Paul Stratman. Motion carried.

#### ITEM EIGHT:

##### AUCTION COMMITTEE

There is a need for a chairperson as Tim Sullivan has more than his share to handle.

#### ITEM NINE: REPLACEMENT OF VACANT BOARD SEAT

There is a need for another board member to complete the rest of Steve Bartlett's term, a one year commitment. It is up to the president and board to appoint someone. Tim Sullivan asked for a delay of 30 days until Mary McCaslin's health improves.

#### ITEM TEN: PLAQUES

Report of 56 sold during the past year, another three sold at the convention, and Bev Brumbaugh purchased another ten. It is projected out to four years to break even with the plaques. They will remain available on Becky Conrad's "My e-bay" at the same price of \$15 plus \$5 postage. She has board permission to make better deals on postage for quantity purchases.

Meeting adjourned at 6:15 pm.

*Submitted by: Janet Belcher*

# MISSING PARTS COLUMN

One suggestion made by several members was to include a column in which to advertise requests for missing parts. Do you have a lid with no bowl, a saucer with no cup? Maybe someone has that extra missing piece you are looking for. We will try to be a matchmaker! Submit any requests to Chris Bartlett to be put in the next newsletter.

## WANTED:

**Lid for the Pansy sugar bowl. Contact Steve Bartlett at [Dufferdog@aol.com](mailto:Dufferdog@aol.com) or 401-885-5889**



# ICE CREAM SOCIAL

*Submitted by Chris Bartlett*

The convention started off on just the right "note" as we were treated to a delicious ice cream social with jazz provided by Gene Massa and his "Ice Cream Social All Stars" on Thursday evening.

This 9 piece group – saxophones, trumpet, trombone, guitars, and percussion – was fabulous and played for an hour while we made our own ice cream sundaes and caught

up on everyone's news. The wonderful music was the perfect start to the convention and a bonus treat for our group.

The ice cream social was provided at no cost to the club by the hotel. The jazz band – friends of Chris and Steve Bartlett - refused any monetary fee and were happy to be "paid" with ice cream sundaes!

## ROOM VIEWING



# CONVENTION PROGRAMS

*Submitted by Chris Bartlett*



Convention attendees were treated to two unique programs at this year's convention.

On Friday, Daniel Buck Soules presented a talk on

auctions and

appraising. He has been involved in the sale of antiques and fine art for more than 30 years. He has conducted appraisal days throughout the United States, has served on the board of directors for many museums and historical commissions throughout New England, and has written a book on the Shakers. He is a licensed auctioneer in both Massachusetts and

Rhode Island and lives in Rhode Island.

Daniel Buck Soules has been an appraiser on the popular PBS show *Antiques Roadshow* since 1999. His presentation to our group was a humorous and informative one about the show. It was fun to learn about the inner workings of the program and to learn how appraisers are chosen, etc. We'll all enjoy looking for him on future episodes of the show.

On Saturday, Tim Gaudet presented the program "Selling at Auction - What to Ask and What to Know". Tim is a founding member of the club and has been collecting Royal Bayreuth for over 40 years. He exhibits at about 20 shows each year and was the sales coordinator for a major Maine auction firm. He acts



as a consultant for auction galleries in mid-coast Maine. He winters in Florida and summers in Maine.

From choosing the appropriate auction, fees, reserves, absentee bids and so on, Tim gave us the information we need to know when selling at auction. His program gave us a better idea of the inner workings of an auction and what questions one should ask when considering putting items in an auction.

Thank you to both presenters for two very enjoyable programs.

## *Club Member Surgeries or Illness*

*Submitted by Karen Church*

I would like to acknowledge some of our club members with illness or surgery.

Mary and Bob McCaslin were unable to attend convention this fall. I can't remember a convention without them there. Mary had a fall the first of July and has had a long road with a great deal of pain. She had her back surgery on November 3<sup>rd</sup>. Joanne Lundquist had a phone call from Bob and he reports that Mary has been sent to a rehab center in Indy and that

it will be a very long recovery. The doctor said she'd be in a lot of pain for some time. They expect her to be in rehab for at least a week, maybe more.

Kat Thacker has also had surgery involving her neck (fusion). She has started feeling better the last few weeks, but still not able to work or drive. It's been a long recovery and she has been told it will be over a year to feel "normal" again. She and Gregg hope to attend Milwaukee next

year.

Ebbie Kolter has had some health issues as well and was not able to attend convention this year. Becky Conrad reports that Ebbie has a pacemaker and seemed to be doing fine before she left for Florida. She is enjoying the Sunbonnet Baby eggcup that they bought at the auction. The Royal Bayreuth Collector's Club wishes all of these folks warm wishes for a speedy recovery! Get well soon!!!

# BANQUET



Saturday evening was the banquet – a delicious ending to the convention. Since the Radisson Hotel is affiliated with the well known culinary institute Johnson and Wales University, the food for the convention events was outstanding. Tonight we enjoyed a fresh fruit medley, spinach salad with bacon dressing, bread, a choice of roast pork, New England baked scrod, chicken mozzarella, or pasta primavera, risotto, a seasonal vegetable mix – and then a wonderfully rich chocolate truffle pyramid. Yum!



We were then entertained by the Alley Katz, a 5 piece band playing favorite tunes from "Tin Pan Alley" and the golden age of American song. Two banjos, a washboard, clarinet, sax, tuba, and vocals all combined for a delightful hour long program that had us all tapping our feet and singing along.



Bev Brumbaugh gave the Presidents Farewell and thanked everyone for their help and for coming to the convention. The Bartletts thanked everyone on behalf of the host committee for all their help and hoped a good time was had by all.

Following the entertainment were the drawings for the 7 state baskets. In addition, Larry Brenner had donated a beautiful glass bowl which was filled with lobster related goodies. Judy Stockwell donated the singing lobster from the hospitality room. Names were drawn from the banquet attendees for these two extra prizes.

Submitted by Chris Bartlett

RBCC



# BANQUET





# TRIP TO THE CULINARY MUSEUM

*Submitted by Chris Bartlett*

One of the highlights of the 2005 convention was a wonderful guided tour Friday of the Johnson and Wales Culinary Archives and Museum. Some of the fascinating exhibits were a diner, an old tavern, examples of stoves and other kitchen equipment, Presidential china, exhibits on famous chefs, cookbooks, and bread and chocolate sculptures. Since the Radisson Hotel is owned and operated by Johnson and Wales University, this museum was a fun chance to learn more about the culinary industry and the history of food.



# TOURING THE VARNUM ARMORY

*Submitted by Chris Bartlett*

On Saturday afternoon a small group from the convention drove to East Greenwich, Rhode Island for a private tour of the Varnum Armory.

Built in 1913 to house the Varnum Continentals, an historic reenactment organization, the building houses the largest collection of American military history in Rhode Island. Guide Don Marcum showed us old WW I and II posters, uniforms, weapons, photographs, miniature soldiers, historic documents, and much more. The building itself is quite unique and the armory and its collections are a real hidden treasure in New England. It was a thoroughly enjoyable afternoon.





# 2005 Rhode Island Convention Raffle Baskets

by Judy Stockwell

We came up with the idea of having New England State Baskets to raffle off at the convention...and also including New York. They were displayed in the hospitality room throughout the convention and everyone received one free raffle ticket in their hospitality bag, with the opportunity to buy more. What a big hit they were....so big that I thought I would write a little something about the baskets, where they came from and who won them.

**Maine Basket:** The Maine basket was put together and donated by Tim Gaudet. It was not a basket but a clam carrier basket that Tim had a friend hand paint and how lovely it was done with a lighthouse, a sailboat, beach scene, boat fishing scene and even a moose browsing in the background. The basket contents were all items relating to the State such as Clam chowder, Blueberry Candy, pancake and waffle mix, blueberry syrup and even a Salley Royal Bayreuth Book. The Maine basket was won by Ken Stockwell...how happy I was...just the one I wanted. However, Ken felt it wanted to live with Cathern (CJ) James in Alaska so he shipped it to her. It is certainly living in a good home as she sent pictures of it displayed there.

**New Hampshire Basket:** The New Hampshire basket was put together and donated by Judy Stockwell. What a fun time going around the state gathering items for the basket. I chose a basket made at the Peterboro Basket Company and had them put the Old Man of the Mountain medallion on the basket along with the basket company name. The contents were all relating to the state such as maple syrup in a bottle with the Old Man of the Mountain etched on it, a plush state bird which is the chickadee and it makes the sound of the bird when a certain spot

is pushed, a book on the Old Man of the Mountain, a Granite State Coffee mug and a bar of soap

made just a short distance from our house. The New Hampshire basket was won by Nancy Brandenburg.

**Vermont Basket:** The Vermont basket was put together by Judy Stockwell. It was a lot of fun going to the Vermont Country Store and gathering items for the basket. The basket was just a nice shaped one with a handle and among the contents of the basket were: Green Mountain Coffee Roasters Coffee, a black bear figure, a bar of goats milk soap, a jug of maple syrup, and Vermont crackers. The Vermont basket was won by Paul Stratman.

**Massachusetts Basket:** The Massachusetts basket was put together and donated by Mary Ellen Ketaltas. Mary Ellen is a new member of our club. What a nice job she did putting this basket together. The large and beautifully decorated basket had loads of state related goodies including Red Sox items, cranberry things, Cape Cod Potato Chips, and Boston Baked Beans. The winner of the Massachusetts basket was Marlene Curry.

**Connecticut Basket:** The Connecticut basket was put together by Chris Bartlett, who traveled to Mystic Seaport to buy some fun goodies. The basket was a lovely woven one and the contents included a New England cookbook, a CD of New England sea songs, Mystic Seaport note cards, apple jelly, and a Connecticut mug. The Connecticut basket was won by Joanne Lundquist.



**Rhode Island Basket:** The Rhode Island basket was put together and donated by Chris Bartlett. The basket was a flat woven one and held lots of neat things from the state. Among the items in the basket were Mr. Potato Head, a lobster cookie cutter, Clam cake mix, a lighthouse sugar and creamer, and a RI towel. The Rhode Island basket was won by Janet Belcher.

**New York Basket:** The New York basket was put together and donated by Dotty Earle. The basket had fall leaves on it and among the contents were: a bottle of NY State wine, a hand painted picture of the NY state flower the "rose"...and Dotty painted it and framed it...it was a lovely pink rose and you could almost smell the flower. It also had a baseball program, information on New York City, and a small brass vase. The New York basket was won by Paul Stratman (lucky guy....two baskets he won...however, he bought enough tickets...thought he would have won them all).

*Thanks to all for their work putting the baskets together and for the donations. We certainly have some talented people on the East Coast! We brought in \$559 on the sale of raffle tickets which helped to defray the costs of the convention.*

# RBCC AUCTION

The Providence convention included the Club auction which offered one hundred and forty-seven pieces to members only. The chimpanzee water sold for the highest bid of \$6400. A \$5500 final bid bought the squirrel water and a beautiful art nouveau humidor brought a high bid of \$4000. The pair of fox candlesticks were sold for \$3500 and

the standing trout water sold for \$2300.

Congratulations to the buyers on the wonderful pieces that they added to their collections. The RBCC auction is only possible because members consign pieces to the sale. Only a few members have consistently provided items for the auction. To those members I want

extend our gratitude for making this event possible each year. The RBCC needs additional members to consign pieces next year. Please take a look at your collection and consign those extra pieces.

This year Judy and Ken Stockwell offered a crow creamer for the sale and donated the sale price to the RBCC. This is a new idea and one that can provide the RBCC with added revenue. Thank you Judy and Ken. Maybe more members will do the same for the 2006 auction.

Below is the high bid on the pieces in the 2005 RBCC auction.

ITEM	HIGH BID	ITEM	HIGH BID	ITEM	HIGH BID
Crow creamer	110	Devil and Dice Demi Cup	50	Monk Creamer	300
Alligator Creamer	175	Rooster Milk	350	Boer Covered Box	300
Shield Back Ships Candle Holder	50	Geranium Shakers	425	Corinthian Humidor	125
Penguin Creamer	450	Art Nouveau Humidor	4000	Penguin Hatpin Holder	700
Lanplighter Toothpick	175	Alligator Shakers	1050	Hoopi Bird Toothpick Holder	25
Grape Milk	50	Penguin Water	5000	Hand painted Roses Shakers	30
Devil and Cards Shakers	275	Japanese Mum Ring Box	400	Pink rose box and Under Plate	200
Squirrel Water	5500	Red Rose Cup and Saucer	200	Green Portrait Pitcher	150
Cobalt Blue Portrait Pitcher	25	Boy and Donkey Short Candle Holder	35	Strawberry Shakers with Leaf and Blossom	65
Clown Creamer Red	150	Melon Milk	225	Sunbonnet Teapot Ironing	300
Brown Shoe	25	Red Poppy Candlestick	230	Trout Shakers	1600
Maple Leaf Creamer	100	Devil Creamer	400	Gold Horse Ashtray	1200
Jack and the Bean Stalk Vase	50	Sun Bonnet Sugar and Creamer Cleaning	40	Lobster Handled Shell Creamer	20
Grape Vegetable Bowl	50	Bell Ringer Creamer	100	Vase 10 1/4 inches Goose Girl	100
Corinthian Candle Stick	35	Spiky Shell Match Holder	100	Lobster Celery Dish	75
Sunbonnet Marmalade	150	White Alligator Creamer	350	Art Nouveau Style Ballerina	4000
Red Cup and Saucer Goats	100	Rose Tapestry Bell	300	Gravy Boat and Under Plate	50
Standing Trout Water	2300	Lobster Salad Bowl	100	Large Rose Covered Dish Very Large	300
Duck Creamer crack	25	Goose Girl and Turkey Farmer Shakers	85	Rose Tapestry Shoe	250
Butterfly Open Wing Milk	275	Strawberry Milk	125	Large Rose Open Dish (Chips)	200
Yellow and Green Clown Shakers	2 X 325	White Glossy Oak Leaf Shakers	375	Old Ivory Footed Articulated Vase 4 1/2 inches	100
Art Nouveau Covered Sugar	1100	Squirrel Creamer	1100	Shield Back Candle Holder Goose Girl	30
Tapestry Portrait Egg Toothpick	250	Crocus Hatpin Holder	1100	Dachshund Shakers	900
Stripped Black Cat Creamer	200	Red Rose Bowl	200	Little Miss Muffet Feeding Dish	125
Grape Sugar and Creamer Lilac	25	Water Buffalo Black	25	Clown Hanging Wall Match	120
Sunbonnet Toothpick Mending	425	Shell Tall Candlestick	100	Sunbonnet Egg Cup Sweeping	550
Covered Dish Desert People	25	Pink and Yellow Rose Shakers	300	Fisherman Plate 9 1/2 inches	25
Sunbonnet Covered Box Ironing	300	Pansy Tea Set	500	Purple Plum Shaker	160
Pig Creamer Gray	120	Cow Plate 7 1/2 inches	10	Purple Satin Poppy Shakers	250
Lobster Water	185	Jack and the Bean Stalk Plate	10	Gorilla Humidor Black	500
Poodle Creamer Gray	125	Santa Milk Brown	2000	Goose Girl Heart Shaped Box	20
Purple Lobster Claw Demi Cup and Saucer	150	Grape Water	100	Old "T" Marked Cup and Saucer	40
Set of three Nesting Pansy Bowls	200	Can Can Dancer Plate	250	Milk Maid Creamer	185
Tapestry Lady's High Shoe	600	Devil Milk	750	Unlisted Pair of Orange Pepper Shakers	65
Shell Bowl 9 inches	75	Lettuce and Lobster Shakers	165	Pair of Fox Candlesticks	3500
Bell Ringer Water	500	Pair of White Buck Shoes	175	Old Man of the Mountain Creamer	65
Dachshund Creamer	100	Oyster and Pearl Creamer and Sugar	100	Penguin Milk	500
Goose Girl Mustard Jar with Spoon	25	Turtle Individual Creamer	400	Cup and Saucer Donkey	30
Elk Shaving Mug	150	Yellow Satin Poppy Shakers	250	Pear Demi Cup and Saucer	175
Snow Babies Breakfast Set	50	Pink Rose Milk	350	Jack and the Bean Stalk Leaf Dish	65
Alligator Milk	300	Fish Head Creamer	65	Dresser Set Blue and Pink Flowers	100
Butterfly Open Wing Creamer	100	Clown Milk Red	150	Elk Milk Pitcher	60
Monkey Milk	400	Corinthian Round Ashtray	40	Tapestry Milk Bears Pitcher	600
Devil Ashtray	220	Elk Beer Stein	150	Lobster Cracker Jar	150
Sunbonnet Coffee Pot Sweeping	600	Tall Smooth Shell Shakers	250	Arab Cake Plate	25
Goose Girl Powder Box	30	Goose Girl Dresser Tray	100	Turkey Vase	10
Sunbonnet Candlesticks Sweeping & Fishing	300	Little Jack Horner Clover Dish	20	Chimpanzee Water	6400
Highland Cow Plate 7 1/2 inches	10	Fish Head Lemonade	500	Pansy Creamer	70
Old Ivory Nut Set	150	Cup and Saucer Sheep	25		

# RBCC AUCTION



# A Rose is a Rose...

by Tim Gaudet

As the date for the Rhode Island convention approached I had no idea of what I might do for a room display that might be interesting or informative. I awaited what Oprah Winfrey calls "a light bulb moment", but the light was dim! In sheer desperation I decided to unpack all the Royal Bayreuth and see if an idea came.

I confess, for safety reasons I keep the china packed up. If you have pets you understand when I say that I am owned by my late brother's cat. She adopted me (not the other way around) and clearly feels that she owns the house. She permits me to live with her as long as I treat her well and lavish her with love and food but the day I found her INSIDE the china cabinet the packing began!

With 200 plus tapestry pieces spread out on the floor I decided to really study what I had gathered. I have always collected for the form of the piece: I sought one of each shape of toothpick, both picture frames, both ring trees etc. I had never studied the color or decoration and that was the answer. By sorting items and comparing closely I had at least 25 different patterns and color combinations.

The greatest variety is found on the traditional 3 color tapestry with white, pink and yellow flowers shown in Book 1 page 101. This pattern is found on at least 4 different backgrounds with different sizes of leaves and ferns behind the roses and several different background colors as well. They look alike at first glance but this is not the case upon close study.

Book 1 page 98 shows what is also 3 color rose (white, off-white with a

pink rose border.) This pattern has the least amount of variations; have 5 graduated sizes of corset pitchers and all are identical but this too can be deceptive. Look at items 1169 and 1170 and you will see that the pink rose border is not the same at all.



In my opinion the most attractive pattern of all is seen in Book 1 items 933 and 944. These examples have 5 colors of roses on a pale yellow background and I have this in a stunning wall vase. I speculate that factory workers cut and applied the paper decals to best fill up the surface of the blank and/or applied the decals by simply using up whatever they happened to have on hand at their work station at that moment in time. How great would it be to find a piece of this pattern with a sterling rose worked into the pattern? If this does exist I have never seen it.

## RARITY

Rarity is subjective at best so bear in mind that the following comments are simply my personal opinion.

I consider the rarest pattern to be the black and brown combination seen in Book 1 item 562. My mother found this piece in a "junk shop" and gave it to me for my 20th birthday. It is the only piece to exist as far as I know and I have never seen or heard of another.

Next in rarity is a piece not shown in either book. I have a 12 1/2 inch vase shaped like Book 1 item 1250 with pink, yellow and white roses on a dark olive green background with white ferns behind the roses. This too, is the only piece of this pattern I have

ever seen or heard of.

Next in line for rarity I believe is the pink and white rose pattern with small blue dots and I brought a low shoe in this pattern to the convention. I also have a small cabinet vase in this pattern and these are the only 2 pieces of this that I have seen. The scarce sterling tapestry would be the 4th rarest I believe. Though many collectors have long felt sterling was the top rarity I have seen or owned far more sterling than any of the patterns mentioned earlier.

## FORMS/SHAPES

Considering ONLY rose tapestry I will try to rank what I believe to be the rarest shapes. I believe first place would go to the mini furniture pieces seen in Book 2 item 346. Tied for second place would probably be the low chamberstick in Book 2 item 342 and the center post ring tree in Book 1 item 1140. I know of three of the chambersticks but have never seen the ring tree except in Mary's text..oh how I long to find this! Third in line would likely be a tie between the stamp box in Book 2 item 376 and the rose tapestry mini watering can. Both of these are rare in scenic tapestry but I believe ultra rare in rose tapestry.

I brought examples of all 25 rose patterns to the convention but had to leave on Saturday to return to Maine for work. Since I left before the official room viewing time you may not have been able to check the display if you attended. I hope this bit of information will be of use as we all continue our quest for the king of the royal porcelains...Royal Bayreuth!

# Alameda, California 2006

Bob and Mary are planning their annual West Coast journey from Thursday, March 30 – Sunday, April 2, 2006.

Guests will be staying at the Marina Village Inn overlooking the Oakland Marina and Yacht Club @ [marinavillageinn.com](http://marinavillageinn.com). Complimentary breakfast includes: coffee, cereal, fruit, sweet rolls, etc. (We will let them know so you get the discount – rooms are \$89 or so). Book early to stay on the first floor). Phone number is 800/345-0304.

*Suggestions* of things to see and do around San Francisco Bay include:

\_\_\_ Wednesday (earlybirds) – Breakfast at the Southshore Cafe (with Fred's out of this BLUEBERRY PANCAKES and other goodies); Leave from Fred and Ida's for a scenic coastal drive to Tiburon and Sausalito.

\_\_\_ Thursday night get-together at Fred and Ida's @ 5 pm – 615 Sand Hook Isle, Alameda, CA 94501 (510/521-9792 or cell 559/288-4775).

\_\_\_ Friday — Ferry to San Francisco (15 minute ride about \$6) with shopping at Union Square, the garment district in SOMA, antiquing, riding a cable car, or ?????? Meet at 3:30 pm at the famous Scoma's On the Wharf at Pier 29 (meals about \$10+) – last ferry leaves at 6 pm sharp.

\_\_\_ Saturday — Tour with Lunch on the Napa Valley Wine Train (\$30+) and dinner at the Greystone Vineyards and Winery.

\_\_\_ Sunday — Antiques by the Bay at Alameda Point with 800+ dealers in this open-air marketplace and fresh fair food next to the USS Hornet (free tours, too). Dinner at Jack London Square.

Still curious??? See where you're going first on GOOGLE – just type in the name for some interesting tips and stories.

# Royal Bayreuth Club Fundraiser Plaques



This attractive plaque with a Royal Bayreuth mark on the back was made at the Royal Bayreuth factory in Germany for the club. The cost is \$20.00 which includes postage and handling and all the funds go to benefit the club. Every collector should display one of these with their collection. They make great gifts. Your check should be made out to Royal Bayreuth Collectors Club, Inc. and sent to Becky Conrad with the number you are ordering. This is an excellent opportunity to buy one to display with your RB collection or give to a friend, and also, to help the club at the same time.

Mail Order form and Check or Money Order to:

Becky Conrad  
12355 N. Upper Lake Drive  
Monticello, IN 47960 - 4748

Number of Plaques Ordered \_\_\_\_\_ at \$20.00

Total Enclosed \$ \_\_\_\_\_

Send To:

Name: \_\_\_\_\_

Address: \_\_\_\_\_

City, State, Zip: \_\_\_\_\_

Don't forget to enclose your check. Becky will forward it to the treasurer.

