



# Royal Bayreuth Collectors Club

Volume 11, Issue 2

September 2006

## MILWAUKEE 2006

### HERE WE COME!

OCTOBER 12, 13 & 14

FOUR POINTS SHERATON • MILWAUKEE WI

- By Tim Sullivan

The 2006 RBCC convention will be held in Milwaukee and members are looking forward to visiting this area for the first time. The hotel is conveniently located adjacent to the airport and has a free shuttle service. If you are arriving by car, the hotel has easy access from the expressways.

From the North take Interstate 41 South toward Interstate 45 to Milwaukee. Continue on I-41 to Interstate 94. Alternatively, take Interstate 43 South, to I-94 East to Chicago. From I-94, take Exit 318 (Airport). From 318, exit at Howell Avenue and turn left onto Howell Avenue. Drive 3/4 mile and the hotel will be on the left.

From the West take I-94 East to Milwaukee. Follow Chicago/Airport directions to Exit 318 (Airport). Take Howell Avenue Exit 318 and turn left onto Howell Avenue. Drive 3/4 mile and the hotel will be on the left.

From the South take I-94 North to Milwaukee. Then take the Howell Avenue Exit 318 and turn left onto Howell Avenue. Drive 3/4 mile and the hotel will be on the left.

Reservations can be made by calling 1-800-558-3862. More information is available on the web at <http://www.fourpointshotel.com/index.cfm>. When securing your reservation please identify yourself as a RBCC member to receive the special club rate of ninety five dollars. Please make your reservations as early as possible. If you experience problems with your reservation, please contact me. There have been a few problems but those have been quickly resolved by the sales representative. Please remember if you want a table in your room for display, Karen Church has to know by September 12. This is the only way the hotel will guarantee that a table will be ready for you in a timely manner.

As in the past we will accommodate late registrations to the best of our ability. On September 28 the remaining rooms in our block will be released for general sale. So please make your reservations before the cut off date. Rooms may still be available after September 28 but the hotel will accommodate members on a

room available basis only. Check out time is noon and rooms may not be available until after 3 PM. While the hotel has agreed to take pets, there will be a one hundred fifty dollar returnable deposit. If you are planning to bring a pet, please



contact Tim Sullivan for more information.

There are restaurant choices if a member does not want to go beyond the hotel. There are also several very good restaurants close to the hotel including the Packing House where the members will have lunch on Friday. The Porter House Restaurant is another excellent choice that serves a complete menu for fine dining.

If you are arriving early, Milwaukee offers plenty of interesting sites to see. You can take a tour of the Miller Brewery or visit Mitchell Park Conservatory to experience the orchids and other plants in three different environmentally controlled domes. Museums, parks, shopping and historic Cedarburg give members choices of places to visit.

The kick off for the convention will be the Ice Cream Social on Thursday evening. Friday will start with a New Members Meeting followed by the Welcome Meeting. A program on RB, the Auction Preview and the 2006 RBCC Auction in the evening will round out the day. On Saturday the General Meeting will start the day and will be followed by a second program on RB. The afternoon will be open for room visits where members can search for new pieces for their collections or just see unusual examples of RB on display. The convention will close with the Banquet on Saturday evening.

*Come join us for the 2006 RBCC Convention!*



## Royal Bayreuth Collectors Club

Website: [www.royalbayreuth.com](http://www.royalbayreuth.com)

### President:

**TIM SULLIVAN**  
5941 Barber Hill Road  
Geneseo, NY 14454  
585-243-2967  
[tenebrous@aol.com](mailto:tenebrous@aol.com)

### Vice President:

**SANDY HEERHOLD**  
808 Black Walnut Drive  
Sugar Grove, IL 60554  
630-466-7601  
[lyricpoet@juno.com](mailto:lyricpoet@juno.com)

### Treasurer:

**CAROLYN CHURCH**  
110 Blackwood Street  
Beaver Falls, PA 15010  
724-846-4526  
[JKC110@comcast.net](mailto:JKC110@comcast.net)

### Secretary:

**KAREN CHURCH**  
110 Blackwood Street  
Beaver Falls, PA 15010  
724-846-4526  
[JKC110@comcast.net](mailto:JKC110@comcast.net)

### Executive Board of Directors:

**TERRY ANDERSON**  
1734 Telemark Drive  
Rockford, IL 61106-6614  
815-397-4189  
[lande4343@aol.com](mailto:lande4343@aol.com)

**JANET BELCHER**  
256 Pinkerton Court  
Marion, IN 46952  
765-664-1467  
[janalbel@aol.com](mailto:janalbel@aol.com)

**BECKY CONRAD**  
12355 N. Upper Lakeshore Drive  
Monticello, IN 47960-4748  
574-583-3002  
[becky@bethsantiques.com](mailto:becky@bethsantiques.com)

**KAT THACKER**  
311 West Drayton  
Ferndale, MI 48220  
248-545-0392

**MARY MCCASLIN**  
6887 Black Oak CT E  
Avon, IN 46123  
317-272-7776

**ALVIN CAPPEL**  
830 Laurel Avenue  
Ashland, OH 44805  
419-289-2493  
[arcappel@excite.com](mailto:arcappel@excite.com)

### Historian:

**JUDY STOCKWELL**  
45 Concord Street  
Petersborough, NH 03458  
603-924-3539

### Editor:

**LINDA TITUS**  
P.O. Box 983  
Durant, IA 52747-0983  
563-785-4438 Fax 563-785-4673  
[imagesimnk@iowatelecom.net](mailto:imagesimnk@iowatelecom.net)



## President's Message

- By Tim Sullivan, RBCC, Inc. President

Jane and I hope that you all have enjoyed your summer as much as we have ours. Western New York has been hot but with plenty of rain for the farms and gardens. The area has set records for high temperatures and rainfall.

By the time you receive this newsletter, the 2006 RBCC convention will only be a short time away. If you can join us in Milwaukee, please make your reservations and plans as soon as possible. Your board has been making and approving plans for the convention. Terry and Mary Anderson have taken on the responsibility of the presentations and they need your help with materials. Janet Belcher has solicited volunteers for the state baskets and also is putting together the member bags. Sandy and Chuck Heerhold will be helping with the auction as will CJ James, Alvin Cappel, Janet Belcher and Roger Lundquist. Bob Gollmar, with help from Roberta and Alvin Cappel, is organizing the hospitality room. Please help them with donations of refreshments and goodies. If in doubt about what to bring, check with Bob.

Negotiations have continued on the future convention sites and the Board will be making recommendations to the general membership in Milwaukee. There are some very good venues and I am excited about these alternatives.

Many members I have talked with this year have commented on the improvement of the newsletter. The change to the black and white format has allowed us to reduce the costs of printing to a more manageable level. While the color format was certainly visually more appealing, the content of the newsletter has been definitely improved. Chris Bartlett has searched out members to write interesting articles and worked to improve our newsletter. So if you have any ideas, suggestions or comments concerning the newsletter, please contact either Chris or myself.

One idea that has been suggested is items for sale. There are a few from time to time but our newsletter would be a wonderful way for members to find or sell pieces. While the number might have to be limited because of available space, this should be a good method for member to member transactions. Look for items in your collection that you can sell through the newsletter and make another collector happy too.

Membership in the RBCC continues to grow and is at one hundred seventy-four members as I write this message. I look forward to meeting some of our new members in Milwaukee. Come join us in Milwaukee and spend a few days enjoying Royal Bayreuth china and the company of fellow collectors.

## Club Members with Illnesses

- By Karen Church

Bobby Jo Brumbaugh has had a long and difficult road by the sounds of things. You can read about her progress on line by going to the website (<http://www.caringbridge.org>). On the home page, click on "visit", in the rectangular box with the flashing cursor, type in "bobbyjo" (no space between her names).

Bobby Jo's page should come up. You can go into her "journal" for updates on her progress. Our thoughts are with Bobby Jo, Bev, and the family.

Mary McCaslin is going to have knee surgery. Our thoughts go out to her and Bob as they are also doing some traveling.

## Secretary's Message

- By Karen Church



Hi Everyone -

Boy, what a summer this has been and I hope you've been able to keep cool. I left Pittsburgh in 93 degree weather (which I know is nothing compared to some of you!). I'm in Northern New York and it's a pleasant 75 degree day with no humidity finally!

The Convention is very close upon us. Please get your registration forms to me as soon as possible and don't forget to make your hotel reservations! If you've never been to a convention before, it's a great time! We have the club auction, room to room visitation with buying and selling

of R.B., show and tell, 2 programs, a banquet, and the hospitality room where people meet and greet, share stories, pictures, etc. If you can't make it all 4 days, come for as many as you can. Some people even come early or stay late to see the sights in the cities we visit. We'd love to meet you and hear your stories! You won't regret coming.

Hope you all have a safe rest of your summer and we'll see you in Milwaukee!

## R.B.C.C. Treasurer's Report

- By Karen Church

May 1, 2006- July 31, 2006

Closing Balance- April 30, 2006

\$ 13,389.75

### Receipts 5/1/06-7/31/06:

Membership Dues- New and Renewals	240.00
Plaques	58.24
Convention Fees	706.00
Closing Balance Plus Receipts:	\$ 14,393.99

### Disbursements 5/1/06- 7/31/06

Entertainment Convention (deposit)	245.00
Newsletter and Roster books	1,327.25
Plaques (postage and E-bay listing)	19.19
Restaurant Convention (deposit)	40.00
Disbursements Total:	\$ 1,631.44

Closing Balance Plus Receipts:	14,393.99
Total Disbursements:	1,631.44
Checkbook Balance:	\$12,762.55

## Missing Parts Column

### WANTED:

LID FOR DEVIL / CARDS HUMIDOR

Have duplicates of others to trade or will pay -

Contact Grace Cornforth via  
Berniewms2@comcast.net

NOTE - THIS EMAIL ADDRESS  
WAS PRINTED INCORRECTLY IN  
THE JUNE NEWSLETTER

### HAVE:

2 1/4" SQUARE ROSE TAPESTRY  
LID. Pink rose and bud in center with  
border of green leaves.

NEED BOTTOM

### HAVE:

5 1/4" HIGH ORANGE ROSE TAPESTRY  
HUMIDOR. A chip on rim  
but not in the tapestry design.

NEED LID

Will pay or sell -

Contact John Zanon

1871 Palm Avenue

Redwood City, CA 94061

## eBay Prices

- By Becky Conrad

Fox Candlestick	Seal Creamer
\$ 1,795.00	\$ 167.50
Crow Creamer Brown	Dachshund Dog Shaker
Beak	\$ 383.99
\$ 65.97	Poppy Hat Pin Holder
Athletic Shoes Pair	\$ 483.99
\$ 154.16	Little Boy Blue Bell
Lavender Poppy	\$ 380.09
Chocolate service	Stork Toothpick Holder
\$ 1,910.55	\$ 187.50
Sunbonnet Coffee Pot	Tapestry Shoe
\$ 600.00	\$192.50
Humidor with Jesters	Sunbonnet Covered
by Noke	Box
\$ 865.00	\$356.85
Red Santa Claus	Gray Money Creamer
Creamer	\$255.001
\$ 1,579.00	Rose Tapestry Dresser
Tapestry Chocolate	Tray
Set	\$ 311.55
\$ 3,227.55	Devil and Card Dresser
Stork Match Holder	Tray
\$ 177.50	\$835.00
Open Wing Butterfly	Rose Tapestry Wall
Milk	Pocket
\$ 281.05	\$350.00
Ping Pong Mini Pitcher	
\$61.00	

# *The Royal Bayreuth Porcelain Factory*

- By Mary McCaslin

A world's leader in the production of porcelain for over 200 years has been the Royal Bayreuth factory in Tettau, Germany. It is the oldest Bavarian china firm under private ownership. Still standing like a fortress on a hill in the little village of Tettau, the factory is located in the Thuringian Hills, adjacent to what was at one time the East German border. Royal Bayreuth is recognized today, as it has been for two centuries, as one of Germany's finest producers of quality porcelain. Although it is delicate to the touch, its durability makes it last for hundreds of years.

Founded in 1794, Royal Bayreuth has survived a number of troublesome events, including the Napoleonic-Franco Prussian turmoil, two World Wars, and numerous changes in management and ownership. The great fire of 1897 destroyed a number of important records and molds.

In 1792, the factory had its roots planted. Alexander von Humboldt, an expert German geologist, was appointed by the King to research a possible factory site. The King desired a porcelain factory in the Thuringia province, and commanded von Humboldt to find the ideal location and personnel.

After a lengthy study, von Humboldt reported to the King that Tettau should be the site of the factory. He recommended that Johann Schmidt and Wilhelm Grenier be awarded the permit. You will see 1794 on the Bayreuth logo, as the official date of commencement operations.

Dinnerware, dining accessories, and coffee and tea sets have been the

company's main product line through the years. In addition, a large number of collector items that the factory has produced include many interesting and fascinating items. Included among them are figurals, scenic pieces, rose tapestry and many unique novelties such as Sunbonnet Babies, which was a limited edition collectible.

For over a decade, my husband Bob and I made several trips to visit the factory to research this beautiful porcelain. For several years I talked with personnel at the factory about the lack of information and records relating to the factory fire of 1897. Persistence does pay off sometimes. Herr Alfred Herold, my contact and friend, informed me that some old ledgers had been discovered in a part of the factory that had not been in use for many years. These dated back to the turn of the 20<sup>th</sup> century. Herr Herold informed me of this when we were visiting the factory with a group of U.S. collectors. We did not have time to look through these aged ledgers. Bob and I returned in the spring to further examine these tomes of history. Not knowing what we would find, we were pleasantly surprised to find these books displayed the artist's actual sketches-to-scale of designs which were submitted for approval to the executives of the company. It was very exciting to see drawings of the figural clown sugar and candlestick holder, the kangaroo, and other scenic pieces. After scanning through them for three days, I was given permission to photograph and use all the material that I could find. Some of the written work had been pasted over older ledger pages, and was therefore hard to decipher.

From these artist sketches the various transfer decals were created and applied to the porcelain. The factory made many of its own decals, but they also bought from decal companies, thus explaining why the same decal may be found on pieces from other porcelain companies. Royal Bayreuth made a lot of advertising pieces and would put any logo on pieces requested by the customer (hotel, souvenir pieces, etc.)

The factory allowed me to take records of these priceless tomes back to the United States so I could study and photograph them. They were to be returned at my convenience, which we did several months later. This is just one example of the trust and friendship that I shared with the Royal Bayreuth Company in the 10 to 12 years of my research. I authored two books during that period. Some of these sketches, of both figural and scenic pieces, are found in Royal Bayreuth – A Collector's Guide – Book II. Many other points of interest are included in Book I and Book II. Explanations of the old ledger pattern books, marks, Old Tettau Blue, Imperial Royal Bayreuth Lithophanes, and other limited editions such as the Christmas plates are found in these books. They are "out of print" now but still can be found.

*(This article also appeared in the West Coast Peddler, August 2005)*



## Book Review - Brimfield Rush

- By Chris Bartlett

Three times a year, in May, July and September, the small village of Brimfield, Massachusetts is transformed into a buyer's and seller's paradise. For 6 days in each of these months, acres of fields fill up with tents, tables, and trucks selling everything and anything you can imagine. Yes, even the kitchen sink! As New England's largest flea market, this is the place to be if you love fine antiques, flea market castoffs, or anything in between.

The book Brimfield Rush by Bob Wyss is a fascinating account of this phenomenon. He explores the history of Brimfield – how in 1959 an antiques dealer by the name of Gordon Reed convinced a group of friends to set up a flea market in a field, and how this humble beginning grew into more days, more fields, and more show operators. Today Brimfield includes 20 fields, with some shows running for 6 days and others for one or two.

How do you begin to describe an event like Brimfield? Author Wyss introduces us to Joe Laskowski and Rachel McKay, dealers of paintings, as they buy and sell their way through

the Brimfield shows from May 2003 to May 2004. Is the painting they just bought an undiscovered gem? Can it be sold for a profit so they buy something else? Do they have a real “find” in the Maxfield Parrish they just purchased?

Throughout the book we learn the many facets of the Brimfield experience and antique collecting in general. We meet such collectors as Joel Schiff, whose passion sends him from booth to booth with the same query, “Cast iron cookware? Cast iron cookware?” We learn about the many dealers and their favorite fields. Add in extra tales of family feuds, the cleaning out of old houses, the discovery of an original Declaration of Independence, and you have a story that will fascinate you, whether or not you have ever experienced Brimfield yourself.

Brimfield Rush was published by Commonwealth Editions in May 2006. It is 291 pages and is hardcover. The ISBN is 1-933212-04-7 and is available at bookstores as well as online. The retail price is \$21.95.

## Welcome New Members

**Dave Kutter/Jen Johnson**

303 E. Lincoln Ave.  
Cherry, IL 61317  
Home: 815-343-3032  
Work: 815-224-4500  
Email: kodyboar303@yahoo.com

**Lois and Jack Kutter**

1928 Shooting Park Rd.  
Peru, IL 61354  
Home: 815-223-4899  
Email: jenna@copper.net

**Royal Reymann Jr.**

373 Stanhope, Rd.  
Sparta, N.J 07871-2830  
Home: 973-729-3451  
Email: oldtoyboyroy@netscape.net

**Ann Tindal**

277 Gandy-Tindal Rd.  
Macon, MS 39341  
Home: 662-726-5378  
Email: anntindal@myway.com

**Clifford & Harriet Adams**

630 Hartford, Dr.  
Jasper, IN 47546  
Home: 812-634-6877

**Address Change:**

**Steve Mullins**

Alternate address changed to:  
Great Northern Financial Group  
Essem Corp.  
900 Chicago Ave., Suite 105  
Evanston, IL 60202-1818  
Work: 847-869-1122  
Fax: 847-869-0441

## WANTED – YOUR FAVORITE SHOWS AND FLEA MARKETS

- By Chris Bartlett

I hope you enjoyed the book review on the Brimfield experience. We New Englanders love Brimfield and I always try to take a day off from work in May, July, and September to attend this fun event. Even though we no longer find much Royal Bayreuth, the promise of a glazed donut, Texas Barbeque for lunch and ice cream on the ride home, combined with the fun of seeing so many antiques and flea market treasures, makes it a good way to spend the day.

It would be nice to have a regular feature in the newsletter about other favorite shows and flea markets

throughout the country. Do you have a show you just can't miss? Is it outdoors or indoors? When is it held? Do you find much Bayreuth or do you just like to go for the atmosphere? Hey, Mid-Westerners – what is your favorite show? Down South, what do you find? Our California friends – any special places? New England – what else can you think of? North – South – East – West – what else is out there?

With your responses we can run this as a regular column which will be helpful not only to those who live in the area of the particular shows, but to

those who might be planning a trip to the area. For example, in 2005 the mid winter getaway was held in Florida to coincide with attending the Miami Beach Antique Show, which was a new show for many of us.

But this column can only be possible with your input. Think about your favorite shows and send your information to Chris Bartlett - see Newsletter Liaison article for my email and regular address. I will also be at the Milwaukee convention and will be collecting information there.

Please let me hear from YOU!!

# RBCC 2006 Auction

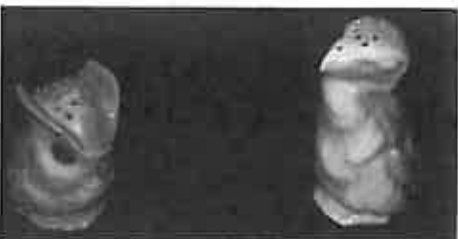
- By Tim Sullivan

The 2006 RBCC auction will present members with the opportunity to purchase over one hundred twenty collectible pieces of Royal Bayreuth china. The list of pieces in the sale is included in this newsletter. I want to thank the members who have consigned pieces as this auction obviously would not be possible without them.

The commission arrangements have changed from last year as the RBCC will charge a buyer's premium of five percent rather than charging that fee to consignors. Each year it is more difficult to find members who are willing to make pieces available for the auction. The changing of the fee structure has helped add interesting pieces to this auction. Still in effect is the no sale fee of ten dollars for any item that does not meet reserve. Under this plan both the buyer and the seller will be contributing to the income of the auction and the RBCC. As was true last year the RBCC will bid reserves for consignors if that is their wish. Some consignors may bid their own reserves. This is a closed, member to member auction that to many is the highlight of the convention.

The pieces will be juried on Thursday afternoon and presented for member inspection on Friday afternoon. The sale will be held Friday the thirteenth of October. Yes, a china auction on Friday the thirteenth. Many good things have come my way on the thirteenth and I plan to add a few more at the convention.

A special thank you to Rollie and Ruth Rosenboom who will help the RBCC again this year. We all appreciate the professional auction atmosphere they have provided over the years. Come join us and add those special pieces to your collection.



# Auction List 06

Alligator Creamer	Dachshund Milk	Purple Pansy Covered Sugar
Alligator Milk Pitcher	Dachshund Water light damage	Pear Creamer
Apple Demi Cup and Saucer	Red Devil Full Body Ashtray	Pelican Creamer
Art Nouveau Lady Dresser Tray	Red Devil Big Jaw Ashtray	Pelican Milk
Art Nouveau Lady Vase	Red Devil Creamer	Penguin Hat Pin Holder
Art Nouveau Lady Bowl	Red Devil Milk	Black Poodle Creamer
Art Nouveau Lady Candy Dish	D&C Card Box	Poodle Milk
Art Nouveau Lady Box with Lid	D&C Dresser Tray	Poppy Bowl Matte Finish
Art Nouveau Lady Hanging Match Holder	D&C Full Bodied Hanging Match Holder	Poppy Compote Lavender
White Bisque Basset Candle Holder	D&C Hanging Wall Match	Red Poppy Hat Pin Holder
Brown Basset Candle Holder	D&C Beer Mug US Zone	Lavender Poppy Tea Strainer purple
Basset Humidor	D&C Salt and Pepper	Rabbit Creamer
Basset Pipe Rest	D&C Doubled Handled Open Sugar	Rooster String Holder
Bellringer Milk	D&C Toothpick Holder	Pink Rose Open Bowl
Bird of Paradise Creamer	D&C Humidor	Pink Rose Covered Box
Buffalo Milk	Eagle Ashtray	Pink Rose Creamer
Bull Creamer Bisque	Eagle Milk	Pink Rose Cup and Saucer
Open Wing Butterfly Creamer	Elk Footed Open Sugar	Red Rose Creamer
Cantaloupe Plate	Fish Head Milk	Gold Rose Milk
Chimp Ashtray Brown	Flounder Creamer	Pink Rose Milk
Chimp Humidor	Girl with Basket Creamer Green	Pink Rose Salt and Pepper
Chrysanthemum Creamer	Hawk Ashtray	Pink Rose Covered Sugar
Red Clown Ashtray	Ibex Creamer	Green Santa Hanging Match Holder
Red Clown Tall Lady Candle Holder	Iris Creamer	Turkey Ashtray
Red Clown Low Candle Holder	Lamplighter Creamer	Seal Creamer
Clown Tall Man Candle Holder	Lamplighter Toothpick	Seal Water
Red Clown Candy Dish	Melon Water	Ladies Shoe white
Red Clown Creamer	Green Monkey Milk Pitcher	Strawberry Bud Vase
Red Clown Lady Humidor	Mountain Goat Ashtray	Strawberry Honey Pot (very rare slotted lid.)
Red Clown Large Humidor	Mountain Goat Hanging Match Holder	Sunflower Milk
Red Clown Hanging Match Holder	Mountain Goat Creamer	Sunbonnet Demi Cup and Saucer
Red Clown Match Holder seated open	Mouse Water	Wednesday Mending
Red Clown Match Holder seated closed	Mussel Box with Lid	Sunbonnet Toothpick Monday Washing
Red Clown Mug	Newfie Water (Black St. Bernard)	Sunbonnet Shallow Bowl Master Nut
Red Clown Pipe Holder	Owl Hat Pin Holder	Wednesday Mending
Red Clown Shaker	Owl Milk	Sunbonnet Single Handled Nappy
Red Clown Water Head up	Owl Water	Monday Washing 6 1/4 by 1 1/4 deep
Red Clown Water head down	Parakeet Creamer	
Coachman Creamer	Purple Pansy Handled Bowl	
Coachman Milk	Pansy Covered Box Very Large Rose Orange Color	
Cockatoo Creamer	Pansy Chocolate Pot lavender	
Corn Butter Pats	Pansy Cup and Saucer lavender	
Crab Box with Lid	Purple Pansy Low Candle Holder	
Black Crow Ashtray	Purple Pansy Creamer	
Cucumber Relish Dish w/hidden face	Purple Pansy Mustard with Spoon	
Dachshund Creamer	Purple Pansy Plate	
Dark Brown Dachshund Hat Pin Holder		



# HAPPY HUNTING

## *A New Column Featuring YOUR Treasure Hunt*

*By Chris Bartlett*

As a fan of the television program Antiques Roadshow, my favorite segments are those in which the item shown has been found in the rafters of an old barn, discovered in a pile of discards by the curb, bought for a few dollars at a yard sale, and so forth. The lucky owners are amazed when the appraiser tells them the item's extraordinary value. Most of the time the reaction is "Wow!!" We who love Royal Bayreuth always hope we too can find that hidden gem, that special treasure ...and of course, for a bargain price!

We would like to know YOUR story about finding your hidden treasure of Royal Bayreuth and feature this as a regular column in the newsletter. There must be pieces in everyone's collection that feel like a "Wow" moment – maybe a piece found in a rummage sale, tucked on a dusty shelf in an antique shop, buried in an auction box lot, discovered on the internet. Was it an unmarked piece? A mislabeled piece? Or just your lucky day?

Our Happy Hunting story is the gray horse head creamer we found at the Topsham Fair in Massachusetts in 1997. My husband Steve and I were collecting animal "spewers" where the liquid "spews" from the mouth of the creamer. At most shows or shops we were able to find a Czech parrot, a Japan bird, or perhaps a German cow, generally in the \$10 to \$50 range. We had only 3 Royal Bayreuth items at that point, an unmarked crow, an eagle,

and a bull and we knew most pieces would be out of this price range.

We arrived at the show as it was opening and we both spotted the horse head at the same time on a high shelf in a dealer's booth. The woman selling the piece had copied a page from a price guide from 25 years ago showing a value of \$95 and had tucked it into the creamer, which she had priced at \$110. We bargained a bit and she agreed to sell it for \$95, which still seemed like a lot to us. But we liked it and it was a "spewer." So we bought the horse and subsequently brought it along to our first RB convention which was in Syracuse, hoping to get some information about it. Club members told us it was a pretty rare piece and we were thrilled – Mary photographed it for her second book and to this day we have never seen another gray horse head creamer. So we were just lucky to have been in the right place at the right time.

So what is your story? Email or write me (see the Newsletter Liaison article for address). I will also be collecting any stories at the Milwaukee convention. We can run your story as "Anonymous Collector" if you'd prefer. This type of column was suggested by a number of people and it will only be successful if we can have stories from lots of members. So look at your collection and think of what Happy Hunting stories your Royal Bayreuth can tell us. This could prove to be one of the favorite columns in the newsletter.

## Newsletter Liaison

*- By Chris Bartlett*

Hello to all Royal Bayreuth Club members. Do you have a suggestion for a newsletter topic, or would you be willing to write an article? The more suggestions and support we can get from members, the better our newsletters can become. Let me hear from you!

Articles and photos should be sent to [Dufferdog@aol.com](mailto:Dufferdog@aol.com) or Chris Bartlett, 1320 Waterford Drive, East Greenwich, RI 02818. I will then send these on to Linda Titus who continues to serve as the Newsletter Editor.

Each issue will include the deadline for the next newsletter. If you are writing an article please have it to me at least 5 days before that date so it can be proofread and sent to Linda for her deadline.

Thank you again to everyone for their cooperation in helping us put out an informative and educational newsletter for our club members.

## A Message from your Club Historian

*- By Judy Stockwell, Historian*

Thanks to all who have sent pictures of club activities and articles on Royal Bayreuth found in antique journals and newspapers. I hope that you will all continue to keep your eyes open for more. Also, if anyone has pictures or information on any of the winter getaways to contribute, that would be appreciated. Please send them to me by computer at [buckhill@adelphia.com](mailto:buckhill@adelphia.com) or my mailing address: 45 Concord Street, Peterborough NH 03458.

Thanking you in advance.



## Warning - Warning!

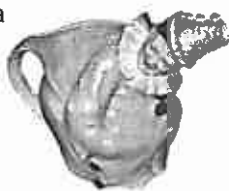
- By Mary Anderson

Royal Bayreuth convention time is dangerously near. Do you know where your clowns and your shoes are?

We plan to have a nice display of R.B. clowns and R.B. shoes this year. We hope to have lots of participation in our displays. Friday is clowns and Saturday is shoes, so if you will not be at the convention for both days, keep in mind which day we will be displaying each item. If each of us brings one or two of each item, it will be fantastic. This is also a good time to bring in clowns and shoes which are questionable. We may all learn something!

Please check the auction listing for clowns and shoes. These auction items will be used in our displays; we don't need to duplicate them. Let's see how many different pieces and colors we can come up with. (Cameras welcome!)

We are also looking for photos of some interesting displays of Royal Bayreuth collections in your homes, or your antique shops. We know some of you have lovely displays (and you know who you are!). Share your ideas with everyone. We would all love to see them.



## MILWAUKEE HOSPITALITY ROOM

Welcome to Milwaukee, Wisconsin for the Royal Bayreuth Collectors Club convention. The hospitality room will be open often throughout the convention as a place to meet, greet, and eat! We will be grateful for any goodies you might want to bring. Some suggestions are grapes, bananas, peanuts, pretzels, candy, cookies, homemade fudge, celery and carrots with dip, cheese and crackers, or munching mix. We will certainly appreciate whatever snacks you want to bring. Monetary donations are also welcome.

## VISITING "ODDBALL" WISCONSIN

- By Kat Thacker

Greetings Bayreuthers one and all! While we're all looking forward to our upcoming convention in the great state of Wisconsin, you might want to consider a side trip to one of the places listed in Oddball Wisconsin - A Guide to Some Really Strange Places, written by Jerome Pohlen.

While Wisconsin is famous for its cheese, beer, Circus Museum, and the House on the Rock, it does have some other unusual attractions that you may wish to visit while in the area.

Several interesting sounding places were found in the Northern region of the state. Woodruff, for example, is where you can find the world's largest penny at 17,454 pounds and 10 feet tall. Of course, it's not made of copper, but a concrete replica made in honor of the "million penny parade" in 1954. This was a health care fund raiser that, one penny at a time, eventually brought in \$105,000!

Speaking of other large things, the world's largest corkscrew can be seen in Hurley. It's 15 feet tall, and a great opportunity for a gag photo, or opening a really big bottle of wine. And the greatest "big" objects of all can be found in Eau Claire - Paul Bunyan & Babe the Blue Ox. They are one of the main attractions at the Paul Bunyan Logging Camp, which for \$3 per person, you can explore everything "lumberjack"!

In Central Wisconsin, one of the sites not to be missed is found in Neillsville - Chatty Belle, the World's Largest Talking Cow. Belle is 30 feet tall, and chats daily about the wonders of cheese. The town also boasts about a replica of the former World's Largest Cheese block!

The original block of cheese weighed 34,591 pounds before being consumed. What stands in its place is

a concrete replica. Sadly another group of Wisconsin farmers have since made an even larger block of cheese weighing in at 40,060 lbs.

In the Southern region you have several places you might find too irresistible to miss. Just into the state on I-90, coming from Illinois, you can find the World's Largest Can of Chili Beans. It turns out it's a big promo for the Hormel Plant in Beloit. In Mt. Horeb, they have a Museum of Mustard. So far, they showcase more than 3,400 different types, with more added daily.

In Spring Green they are famous for their Acrobatic Goats. Peck's Farm Market has a petting zoo to which they have added towers of dizzying heights - just for their pygmy goats to climb. First you purchase a 25 cent cup of corn, and then it's wheeled to the top, where the goats just follow it up! What novelty! What fun!!!

In Fennimore they have Igor the Mouse - a 12 foot tall cheese-eating rodent used to promote their cheese factory. (Imagine if he were made of Bayreuth porcelain... that's one piece I'd love for my china cabinet!!!) It looks like their shop carries everything you would ever want in cheese-themed gifts here - cheese head hats, neckties, and postcards. You'll have to get all your "cheesy" souvenirs here for the folks back home!

The state is chock full of fun things to see and do, but the antique shops will probably be the places we run into our fellow attendees if this year is anything like in past years!!!

Have a safe trip, and enjoy your visit to the area. We'll all look forward to the tales you tell of your adventures in the Cheese State!

# Musings From An Advanced Collector on the Passows

- By Judy White

Harold and Joeleen Passow were among those of us who met in Orville, Ohio in the hopes of creating a Royal Bayreuth collectors' club. Though that group didn't work out as was planned, we are very grateful that the get-together eventually resulted in the formation of the present Club. We were lucky that several of those early members were already members of other clubs and knew how to put together the needed framework and how to write a Constitution and Bylaws.

Harold had already been collecting cast iron toys, both were active members of the RS Prussia club, and both had spent years buying choice pieces of 1850s Victorian rosewood furniture, Pairpoint and Handel lamps, and other fine pieces to furnish their home once "the boys," who had been hard on their Colonial furniture, had left home. They had started this quest after seeing fine examples of the rosewood furniture in a Chicago museum.

Joeleen was the first, in 1977, to buy Bayreuth, figural pieces because they were "cute" and made her smile. Harold was not too impressed at first, but eventually got hooked too and has since also been a faithful club member. Truth be told, Joeleen is still the more avid collector. She still prefers figurals, but couldn't really name a favorite. She does like the Art Nouveau pieces, especially those in variegated colors, likes her lady clown humidor (we both agreed we especially like the "lady" pieces), but is not buying too much any more except for an occasional cup and saucer. She loves chocolate sets in Prussia, and has two RB poppy chocolate pots, along with some cups and saucers to match, but said those cups and saucers are really hard to find. If they come up on eBay, they go through the roof. Only two scenic pieces—a brown bear chocolate pot with one cup and a polar bear water—are part of her collection. She has some children's items and is still looking to match three salts, a chrysanthemum, a lamplighter, and a bellringer. She

treasures a pair of pine cones, a really rare set.

They did some shows locally for a few years, but found, as I had, that although they are in the farm belt, the scenics with farm animals were looked at a lot, but the price scared off many who didn't realize what Bayreuth is. Joeleen said that they didn't sell furniture, but smalls. Some Prussia and Bayreuth sold, but in their area they found that pottery and stoneware were what "came out of local homes" and seemed to be favored over other items. She did have luck also with Shawnee and other cookie jars, but good glass and china was a slow sell. They loved doing the shows because they met such nice people, both the other dealers, and the customers. When they started doing shows in 1984, eBay was not a contender and she was surprised at how much she sold overall.

While no longer doing shows, they still have a booth in the Heart of Ohio mall, learning that they have to find items they can sell for "reasonable prices." She has seen many shops and malls close over the past few years, probably due to eBay. "I don't know what to buy anymore," she said and goes by the philosophy, "Don't buy it if you aren't willing to keep it." To illustrate the changes in current markets, she said that when they first started going to FL 20 years ago, between Thursdays and Sundays there would be 2-3 shows a day to attend. Now she is lucky if she finds two in the same four-day period. Last year, the crowd at the Mt. Dora show was down from the past, and when they went to the last Chicago show, there were only 25 people in line waiting to get in, a real change from past years where people were lined up far down the sidewalk outside the show.

They still attend some auctions, and Joeleen thinks they are still going well, though the prices of common things (as everywhere else in the market) are low. In her observations, things that seem to be "riding a high" on eBay now are old cranberry glass,

opalescent with patterns, along with any rarer items in all fields. She also thinks that the younger people don't as much seem to be buying for a collection as they are buying to decorate their homes. She had recently talked with an auctioneer with a big following in the Midwest who said that paintings are really selling well at his auctions.

Unlike many of us, her children seem to really like their antiques. She says that as our kids get older, they get more interested. When she was young, she had no interest in antiques, and neither side of their families had had much interest. As an aside, she filled me in on Harold's mom, who still lives alone on the family farm, though all the rest of the family live nearby and drive her to her appointments and to shop. She will be 103 this fall, but still makes her pies that "they all fight over."

When asked about her best buy, she told of the covered turtle box that was sitting next to a Prussia carnation mold bowl at a show. She bought both, the bowl for \$110, the turtle for \$10! But it has taken a while for the prices to catch up with a turtle water (smaller than most waters but the largest of four sizes) that Harold bought at a Rochester, Minnesota show! Her largest purchase at a show was in the 80s at the Des Moines Antique Extravaganza, a Walt Johnson show. She found an alligator water for \$425, four other waters and a Santa match. Oh, for the good old days.

Both still enjoy attending the conventions and will be in Milwaukee for this one. They enjoy mostly seeing the friends they have made over the years, but also like checking out prices of things for sale in the rooms and at the auction, and checking out with others how—and what—things are selling.

We have been lucky in our club to have had their input over the years. Joeleen has served on the Board, and is a steady, reasoned voice when decisions have to be made. She has also been most helpful in educating many of us from her wide experience in buying and selling antiques.