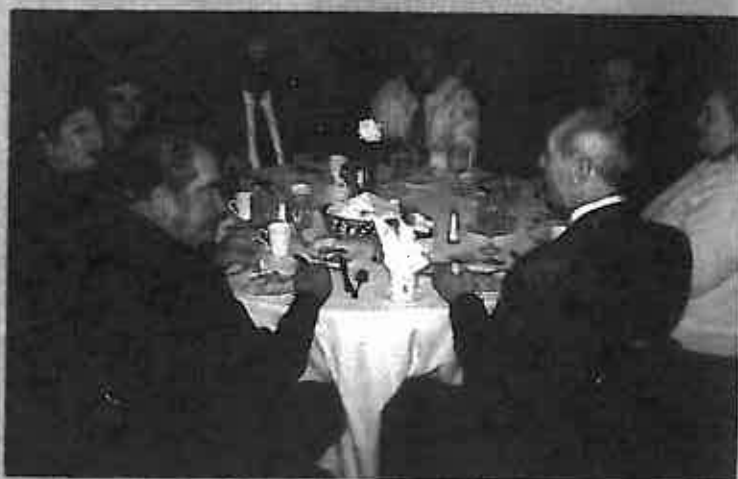
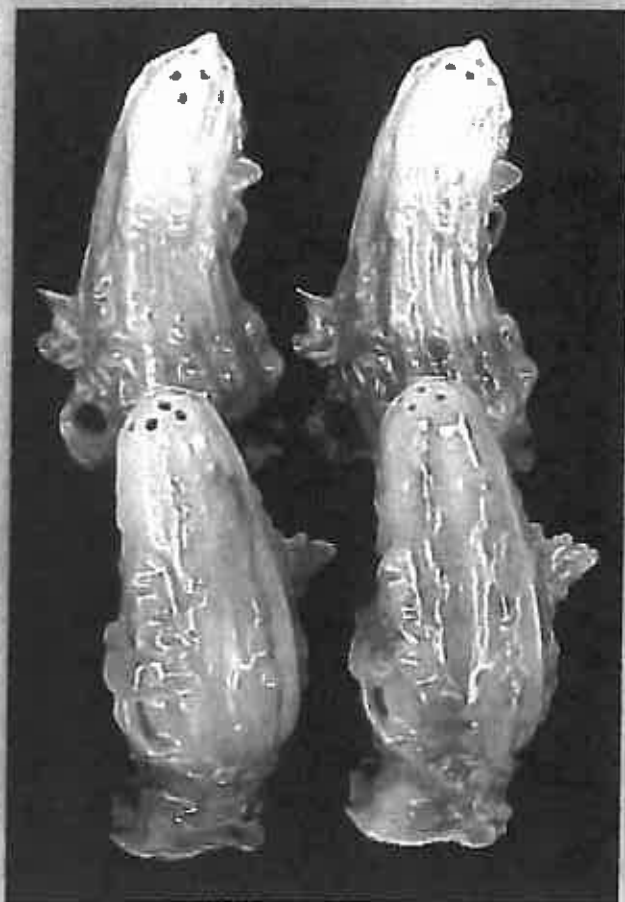




*Royal Bayreuth Collectors Club*

Volume 11, Issue 4  
December 2006

# *Convention 2006*



# Royal Bayreuth Collectors Club

[www.royalbayreuth.com](http://www.royalbayreuth.com)

## President

Tim Sullivan  
5941 Barber Hill Road  
Geneseo, NY 14454  
585-243-2967  
[tenebrous@aol.com](mailto:tenebrous@aol.com)

## Vice President

Sandy Heerhold  
808 Black Walnut Drive  
Sugar Grove, IL 60554  
630-466-7601

## Treasurer

Carolyn Church  
110 Blackwood Street  
Beaver Falls, PA 15010  
724-846-4526  
[jkc110@comcast.net](mailto:jkc110@comcast.net)

## Secretary

Karen Church  
110 Blackwood Street  
Beaver Falls, PA 15010  
724-846-4526  
[jkc110@comcast.net](mailto:jkc110@comcast.net)

## Executive Board of Directors

Alvin Cappel  
830 Laurel Avenue  
Ashland, OH 44805  
419-289-2493  
[arcappel@excite.com](mailto:arcappel@excite.com)

Becky Conrad  
12355 North Upper Lakeshore Drive  
Monticello, IN 47960  
574-583-3002  
[becky@bethsantiques.com](mailto:becky@bethsantiques.com)

Richard Earle  
15 Burning Tree Drive  
Newburg, NY 12550  
845-562-8139  
[rearle8031@aol.com](mailto:rearle8031@aol.com)

Mary McCaslin  
6887 Black Oak Court East  
Avon, IN 46123  
317-272-7776

Nancy Rublaitus  
2713 Everett Road  
Ottawa, IL 61350  
815-434-4943  
[mikeandnancy53@yahoo.com](mailto:mikeandnancy53@yahoo.com)

## Kat Thacker - Editor

311 West Drayton  
Ferndale, MI 48220  
248-545-0392  
[kat@katthacker.com](mailto:kat@katthacker.com)

## Historian

Jerry and Harriet Lavine  
7 Quail Run  
Canton, MA 02021  
781-821-1202  
[hijl1000@yahoo.com](mailto:hijl1000@yahoo.com)

## Shoe Presentation at the Convention

by Mary Anderson

On Saturday club members enjoyed another interesting program, this one featuring Royal Bayreuth shoes. Did you know that giving someone a gift of a miniature shoe is a symbol of good luck? That was a Victorian tradition. Maybe that should be your next gift for someone you care about. Royal Bayreuth shoes differ from many other porcelain manufacturers. They may have a right and a left shoe, so you can have matched pairs. Some look well-worn with creases or sewn/repai red areas. There are sport shoes, dressy shoes, matte finish, glossy finish, and tapestry finish. What a wonderful display of shoes we had at this year's presentation. More than 100 different shoes - men's, women's, children's - many different colors, patterns and styles. There are probably more out there that have yet to be discovered. But all in attendance got a good look at shoes that they had not seen before. A very special thank you goes out to Ken and Judy Stockwell, Chuck and Sandy Heerhold, and Tim and Jane Sullivan for bringing some of their very special shoes to share with everyone at the convention.



## President's Message

by Tim Sullivan

The 2006 RBCC convention in Milwaukee provided our members with an opportunity to gather and share their interest in Royal Bayreuth china. The highlight of the convention was our auction that offered one hundred thirty-five pieces to the members. The combined income of \$2,707 from the auction, \$490 from the sale of state baskets organized by Janet Belcher and \$136 from the silent auction of prints donated by Kat Thacker added \$3,333 to the treasury.

The convention showed a profit after all expenses were paid. A special thank you to those responsible for maintaining a tight budget especially to Bob Gollmar who organized the hospitality room and to Janet Belcher who assembled the member bags on a very limited budget. Their efforts allowed the 2006 convention to earn \$1079. This fiscal responsibility has allowed the board to reduce the registration fees for the 2007 convention.

The preparation work and the financial success of the Milwaukee convention puts the final touches on a year where the RBCC has adjusted expenses to bring them in line with income. In 2005 the newsletter cost \$1,900 more than the income from dues. That overage was reduced to \$500 in 2006 and that included a \$2800 all color December issue. The newsletter's cost will now be limited to the income from dues. This is possible now that the newsletter is predominately black and white instead of all color. The per page cost of color is about four times the cost of black and white. Therefore the number of color pages may increase over last year but the majority of the pages will still be black and white in 2007.

When I took office, the RBCC had no convention sites negotiated for 2007 and 2008. In fact the Milwaukee convention contract had been signed in 2003 and since that time no additional sites had been found. There were several discussions about the type of hotels and location for future sites and several members requested that Embassy Suites be approached as a possibility. During my search for sites this past winter,

over seventy hotels were contacted in fourteen cities, among these were nine Embassy Suites. Most Embassy Suites are substantially more costly than the RBCC had paid in the past. I was fortunate to be able to negotiate a \$105 nightly rate that included breakfast and an evening reception in Pittsburgh. This particular hotel is a wonderful fit for the RBCC. There is an excellent hospitality room and ample meeting space.

Using the proposal from Pittsburgh, I was able to negotiate additional proposals from Embassy Suites in Detroit, Cleveland and Columbus at the same \$105 nightly rate. In addition to meeting the Churches in Pittsburgh, Jane and I traveled to Columbus and to Cleveland to visit these hotels. Kat Thacker visited the Detroit site and saved us that trip. After reviewing the sites the board recommended to the membership that Pittsburgh and Columbus be the respective sites for 2007 and 2008.

The Milwaukee convention was in difficulty because few plans had been made since the signing of the contract in 2003 and there were issues that needed to be renegotiated. This added more work to be done prior to the convention.

Membership dropped to near one hundred forty so I called all the members who had not sent in their renewal. I talked to so many interesting members and was able to encourage the majority to return to the RBCC. Other sources of new members were articles submitted by Becky Conrad to antique publications and contacts from the RBCC web site at <http://www.Royalbayreuth.com>.

In addition to the above, Jane and I secured all the pieces for the auction and organized the auction before and during the convention. These preparations necessitated a trip to the Boston area to arrange for the consignment of a large number of pieces.

This first year as president has been very busy and much has been accomplished. Milwaukee was a success and actually showed a profit for the club. We have two future sites at wonderful hotels at a very reasonable cost. The newsletter



has improved and the costs are no longer a drain on the RBCC bank account. The auction for 2006 successfully raised \$2707 and offered our members rare and not so rare pieces for their collections. The RBCC has made changes to the bylaws that require the board to submit a budget to the membership at the annual meeting and restricts the power of the president to spend funds not allocated in that budget. Also the editor position will no longer be a voting board position free of term limits.

The budget is sound, membership has increased, the registration fee for the 2007 convention has been reduced, the membership dues have not been increased and the total raised in Milwaukee including the auction, baskets, prints and fees was \$4412. This shows that we do not need to constantly look to our members for more funds. I would encourage the board to further reduce the cost to members in light of the profits from Milwaukee.

These are the successes but there are failures too. My impatience with the financial issues that faced the RBCC when I took office at the 2005 convention have caused problems. The lack of oversight concerning the plaques at the 2004 convention, cost of the color newsletter and the expenditures at the 2005 convention led to expenses that should not have been borne by the RBCC. These and other issues have been addressed and the necessary steps have been taken to correct these financial missteps. These issues have not passed without controversy with some members. Until these individuals put the RBCC first, the club will suffer. Since I have become a personal target and a distraction for the RBCC, I am resigning the position of president effective December 12, 2006.

## Secretary's Message

by Karen Church

What a nice time we had in Milwaukee. We were even treated to the start of a Milwaukee winter. We saw a light dusting of snow. We went out in the cool breeze for lunch on



Friday, and actually had 56 attend. Not bad, and it was great food!

Bob Gollmar, with the help of his sisters (Gail and Sandra), Bob Mazza and others, did another great job with the hospitality room. The decorations were fantastic. Special thanks go out to Gail, Sandra, Roberta, Alvin, and Kar for their artistic genius (and to anyone else I may have missed). Janet Belcher (and Alan) did a lot of work organizing the state baskets to be raffled. We had seven baskets that were made up by the different members of the club and they all were gorgeous! Thanks to all of those people (you know who you are!). Kat donated two of her artwork pictures for a raffle with proceeds also going to the club. So nice to be talented and thanks to her as well. If I have forgotten anyone, I'm sorry! There were so many people that jumped in to help, and it made for a great convention.

It's that time of year again!! The membership dues renewal reminders will be coming in the mail very soon. Dues will still be \$30. Please also be sure to send any updates of information (change of address, phone numbers-home and work, email address etc.).

Mom and I send our best wishes and hope everyone has a very Happy Holiday!

## Message from the New Editor

by Kat Thacker

Greetings everyone. This is my first letter as your Newsletter Editor, so I wanted to take this opportunity to introduce myself to those that may not know me and say a few words about the newsletter.

First off, thank you to Chris Bartlett for finishing up her duties as newsletter liaison. She did a great job of soliciting and writing interesting articles this past year. And an especially BIG thanks to Tim Sullivan, who walked me through the process for putting this issue together. (I couldn't have done it without your help!)

I sincerely hope that we continue to get lots of great articles and photos from you, our membership. We also need your ideas for upcoming stories - things you would like to see and learn about. Please participate - the newsletter will be far better with more voices expressed. Please send all your articles and ideas directly to my email; [kat@katthacker.com](mailto:kat@katthacker.com).

The article ideas that Chris mentioned at the convention this year (and in the September Newsletter) were both good ones;

- Best Antiquing Haunts; stories/and or listings of your favorite antique shows or flea markets around the globe. We all love to hear about great venues for finding Bayreuth, or just antiquing in general.
- Happy Hunting; treasured pieces you may have found in odd places, like yard or rummage sales, or tucked in the bottom of auction boxed-lots. (Humorous anecdotes are always a plus!)

I've been a member of RBCC since 1997, have met many wonderful people and learned a great deal about my favorite porcelain - especially at the conventions! This year, besides the long drive through unseasonable white-outs of snow, we got to see lots of beautiful Bayreuth, some that was quite unique. It was fun seeing a clown put on his "character" via makeup and big shoes,

while learning about lots of little RB shoes! We also had the chance to visit with friends, both old and new while enjoying Wisconsin's hospitality.

Through the hard work and dedication of President Tim Sullivan, we are fiscally back in the black! Both he and Jane deserve a BIG Thank You (belatedly) from the membership. He pulled together an outstanding club auction for us this year (w/Jane's assistance), as well as lining up excellent convention sites for the next several years.

We must remember that there are many people working tirelessly behind the scenes to pull these conventions together. It is easy to forget that they spend hours working throughout the year in preparation for these events. They all need to be appreciated because without them there would be no convention for any of us. We are always looking for volunteers to help with committee work. I urge you to share your skills and talents with the club!

Wishing you and yours a happy and healthy holiday season!

The Deadline for the March Newsletter is FEBRUARY 10th.\*\*\*

### Dear Friends and Loyal Customers,

We are in the process of moving from Iowa to Alabama. Please do not ship any new items for restoration until after February 1, 2007 and then ship to:

**Sidmore Antiques**

**707 Shasta Drive**

**Albertville, AL 35950**

**Phone: 256-891-7571**

**E-mail: [Sidmore\\_Antiques@yahoo.com](mailto:Sidmore_Antiques@yahoo.com)**

*Thank you,  
Nadine and Larry Sidmore*

## Convention Raffle Baskets

by Janet Belcher



Seven lovely state-themed baskets were donated for raffle at the Milwaukee convention. Each basket contained flavorful and fun items representing that state. A total of 13 club members generously participated in preparing the gift items representing Wisconsin (2 baskets), Illinois (2 baskets), Indiana, Ohio, and Kansas/Missouri. Six lucky members took home the goodies, with Judy Stockwell taking

home two. Other winners were Paul Stratman, Mary McCaslin, Jim Carter, Sandy Heerhold, and Onita Pierce.

Many thanks to all members who participated in the raffle, either with donations of the baskets or with the purchase of raffle tickets. It was a fun event (especially for the winners!) and generated \$490 to be applied to next year's convention expenses.



## Secretary's Convention Report

by Karen Church

The first five states with the highest number of members: Illinois-21, California-18, Massachusetts-10, New Jersey-10, Pennsylvania-9, Wisconsin-9, Ohio-8, and Indiana-8. We had approximately 76 individuals attend the Milwaukee convention in some aspect. There were 56 who attended the lunch at The Packing House on Friday. We were supposed to have 52 attend the banquet Saturday night but I think the count was more around 40-42 who actually attended. The Little People were

Total number of club members.....	182 (2005 = 183)
New members joining since 2005 convention .....	31 (2004 = 22)
Members removed from the roster .....	32 (2005 = 24)
New members who did not renew .....	12
Members with two or more years .....	20

great as the entertainment. I would also like to extend thanks to the first time convention attendees. Their names are Jill Berg (Nebraska), Harriet and Clifford Adams (Indiana), Kris Malmberg (Wisconsin), June Kohen (Florida), Esther Caprio and George Bock (New

## Get Well Wishes For Club Members

by Karen Church

First of all, it was so nice to see some of our club members who have been battling illnesses that made it to convention this year. Bobby Jo Brumbaugh looked great and we were so happy she was able to attend. It was a boost to all of our spirits I think as well as, I hope, hers. Al Friedrich was there after his surgeries and still his dapper self! Mary McCaslin was able to attend with all of her recent surgeries. C.J. James had recent knee surgery and still made convention getting around on crutches. Kat Thacker is still recovering from her surgery and wearing a neck brace part of the time. She belatedly made it to the board meeting after struggling through two snow storms and a car accident (thankfully not theirs!) en route.

There are other members who did not attend the convention that are also battling illness. Sam Breece, who has suffered a stroke, but is making progress. We hope to see you next year in Pittsburgh. Other members brought before the membership suffering from illness are Barbara Green, and Alma and Jack Biddlecome.

We wish to extend our thoughts and prayers to everyone. We also wish to remember two of our members who passed away this year, Joyce Williams and Larry Brenner.

Jersey), Earla and Jim Somerville (Wisconsin), William Roeder (Wisconsin), and Dave Kutter and Jen Johnson (Illinois). It was so nice to have so many new members attend this year. We hope that you had a good time and will think about attending next year in Pittsburgh.



## Pittsburgh and Columbus Selected for 2007 and 2008

by Tim Sullivan

The membership attending the convention accepted the board's recommendations to have the RBCC conventions in Pittsburgh for 2007 and Columbus for 2008. Both sites are Embassy Suites Hotels that offer two-room suites, a cooked to order breakfast and an evening reception each day. The room rate will be one hundred five dollars at each hotel. Watch for more information in the March issue of the newsletter and plan on joining us in Pittsburgh next year September 27, 28 and 29. The dates for the 2008 convention in Columbus are September 25, 26 and 27.



## New Members

Esther M. Caprio and George H. Bock  
252 N. Pond Drive  
Mount Laurel, NJ 08054  
856-273-8515

Kristine R. Malmberg  
2754 Hula Dr.  
Verona, WI 53593-9715

Wanda Pogemiller  
310 S. 4th St.  
Wapello, IA 52653

Ernie Semersky and Dory Newell  
1301 Loch Lane  
Lake Forest, IL 60045  
semersky07@yahoo.com

Jim and Earla Somerville  
W3908 Orchard Rd.  
Lake Geneva, WI 53147  
262-348-0157 (May-Oct)  
(Nov-Apr) quarryfarms@aol.com

Bill Sweet  
14 Diana Drive  
Rumford, RI 02916  
Home and Work: 401-434-4548

Daniel J. Francis DMD  
David A. Francis MD  
1615 Meridian Ave. Apt. 401  
Miami Beach, FL 33139  
305-674-3470  
dannysobe@msn.com

## Newsletter Liaison Change

by Chris Bartlett

Effective with the December newsletter, the position of Newsletter Liaison is being eliminated. Kar Thacker replaces Linda Titus as Newsletter Editor and Linda will continue on as the Publisher. Because of this change, the position of Liaison is no longer needed.

I wish to thank all members who have helped me out this year by providing articles and suggestions for the newsletter. The positive feedback that I have received on the many informative and educational articles we put in the newsletter was especially appreciated. Thank you!

## New Club Historians

At the recent convention, Jerry and Harriet Lavine volunteered to be the Club Historians. Please send them any articles on Royal Bayreuth that you might find in antique journals and newspapers. Also pictures and articles from any of the winter getaways are greatly appreciated. Please send them to the Lavines by computer at hljl1000@yahoo.com or their mailing address at 7 Quail Run, Canton, MA 02021.

Judy Stockwell, who has served as the Historian since September 2001, has done a fantastic job of creating and maintaining the many scrapbooks detailing the history of the club. A big THANK YOU to Judy for a job well done!

## Membership Changes

### Change of Address

Harriet Land  
1800 Country Club Rd.  
Senatobia, MS 38668  
ha47@earthlink.net

### New Mailing Address

Tim Gaudet  
4919B Sable Pine Circle  
West Palm Beach, FL 33417  
561-640-4094  
tgaudet13@aol.com

### New E-mail Address

Art Ward  
reuthful@bellsouth.net

Dave Kutter and Jen Johnson  
kodybear303@yahoo.com

Ken Russell  
juke57@slingshot.co.nz

## Clown Presentation at the Convention

by Terry Anderson

The Milwaukee convention featured two entertaining and informative programs for club members. The first program on Friday centered on the clown, which was the theme of this year's convention. Jerry Little, an actual practicing clown at Ringling Circus in Baraboo, Wisconsin, opened the session. He honored us with his last performance before retiring. Jerry had his clown outfit on, but had only his natural "bare" face. He proceeded to show us how a clown face was put on. He was transformed into "Wilbur", his personal alter-ego. He explained the different types of clown make-up: the "character", "general clown", and "white face". This was all interspersed with humor only Jerry could provide. Slapstick props were also used. We learned that clowns work hard to not scare children. Only clowns play tricks on other clowns. It was professional, entertaining and something we will all remember. After that we shared conversations about clown items in Royal Bayreuth. Many exceptional clown items were on display for everyone to enjoy. Thanks to Chuck and Sandy Heerhold and Mike and Nancy Rublaitus for bringing some of their lovely clown items.



## Board Meeting

### Thursday, October 12, 2006 (2:00pm)

#### In Attendance:

- Tim Sullivan
- Terry Anderson
- Janet Belcher
- Alvin Cappel
- Carolyn Church
- Karen Church
- Becky Conrad
- Sandy Heerhold
- Mary McCaslin
- Nancy Rublaitus
- Kat Thacker

Tim Sullivan, President called the meeting to order. Agenda started with Committee Reports:

**Providence proposal for 2008:** Steve Bartlett was scheduled to report to board on "Banderias" expenses, and chose to have Carolyn Church present his info. He felt they would be able to prepare for possible return to Providence in 2010. Discussion by board of "Banderias" excursion in 2005, it was felt that club had liability issues w/that type of planned event. It was decided that non-RB "outside activities" DURING the convention must be approved by the board. (If done before or after the event - not a problem, but cannot be endorsed by the club, or on agenda). Motion made by Sandy Heerhold that we focus on RB collectibles during convention time, not outside activities. It was modified to "unless approved by board of directors". Seconded by Becky Conrad, passed unanimously.

**Preparations for Milwaukee:** Janet Belcher talked about the State baskets she had pulled together from member donations as a club fundraiser. Motion was made that proceeds from baskets to be used for any shipping expenses that might occur. Seconded by Sandy Heerhold, passed unanimously.

**Scottsdale proposal (materials only):** Tim Sullivan talked through the three options for Scottsdale - all were too expensive. Room rates were \$119. in one hotel, but the food minimum was \$5000. (Lunches at \$22., banquet at \$40.+) Another hotel had \$139. rooms plus 18% tax.

**Midwest proposals:** Tim Sullivan and Becky Conrad looked into Columbus, Indianapolis, Tunica MS, Lexington, while Harriet Land looked at Memphis. Major-

ity of problems with bringing in our own food/drinks. Tim set up 4 hotels in Pittsburgh for Karen and Carolyn Church to investigate for 2007. Embassy Suites was the top pick, over the Holiday Inn, Marriott, and Radisson sites. Room rate was \$105, with made-to-order breakfasts and managers receptions included. (Buffer lunches were available for \$15. at all ES). Columbus, Cleveland, Dayton ES also matched rates. Of these three, Columbus looked the best location for 2008. Indy was checked - the Radisson was \$95. per night but didn't include breakfast or receptions. Motion was made by Alvin Cappel that we recommend Pittsburgh for 2007, seconded by Terry Anderson, motion passed. Motion was made to recommend Columbus for 2008 by Becky Conrad, seconded by Sandy Heerhold, passed unanimously.

**Treasurer's Report:** Carolyn Church passed out copies of Annual Report, running Sept 16, 2005 - Oct 9, 2006. Auction reports \$2849.64 profit from 2005 event. Plaques - we have just broken even on original expenses. It was reported we have 205 left. Motion made to accept Treasurer's Report by Terry Anderson, seconded by Alvin Cappel.

**Plaques:** It was suggested that we offer new members at conventions a free plaque for gift. Sandy Heerhold made motion to give one to new members at event, or they can pay \$5. to have one shipped to them. (they are still available for \$15. each to members) Seconded by Terry Anderson.

**Secretary's Report:** Karen Church reported that club membership stood at 182. New members since 2005: 31, removed from roster: 32. Tim Sullivan called the 50 people who had recently dropped out to find out why. Motion was made to accept report by Alvin Cappel, seconded by Janet Belcher, unanimous acceptance.

**Newsletter (Editor and Budget):** New Editor is needed immediately. Linda Titus will remain Publisher only. Chris Bartlett's position as newsletter liaison will be redundant after this issue. Budget; We are now operating in the black on newsletter - expense is no more than membership dues taken in. Do we want to raise dues to go back to a full-color newsletter? Terry Anderson thinks

we should keep it mostly bandw for another year, and see how it goes. Motion was made by Becky Conrad that the newsletter not exceed the dues, seconded by Terry Anderson, unanimous acceptance. Janet Belcher brought up the raising of dues discussed in RI. At that time we voted to raise the dues to \$40 in 2007. (this was voted on and passed) Motion was made that raising dues was unnecessary at this time by Terry Anderson, seconded by Becky Conrad, unanimous acceptance. Dues remain \$30.

#### Discussion for changes to Constitution and Bylaws:

- We need to define dues payment "annually" with dates (Art II, Sec B). Motion was made to define annual as Jan 1-Dec 31 (calendar year), with new members who pay after Sept 1 also getting the following year included. Motion made by Becky Conrad, seconded by Sandy Heerhold, unanimous acceptance.

- Newsletter Editor was formerly a lifetime, voting board member (Art IV, Sec A). Motion was made that we change Editor from voting board member status by Alvin Cappel, seconded by Terry Anderson, unanimous acceptance.

- Approval of Expenses (Art VI, Sec A). Motion was made that the President must stay within annual budget set by board, unless additional expenses are approved by board. Motion made by Becky Conrad, seconded by Terry Anderson, unanimous acceptance.

**Auction Report:** Tim Sullivan reported that we had between 129-136 pieces for the auction this year. A very thorough inspection was being done by Roger Lundquist and CJ James, and pieces were being labeled w/any problems, but the event should still be buyer beware. The new Auction Chair will be Chuck Heerhold.

**Complimentary Rooms:** It was decided that there will be no more contracts for convention hotels w/comped rooms for the Hospitality host/crew. Any free rooms provided by the hotel will be used to benefit the entire membership (ie; hospitality room).

Motion was made by Sandy Heerhold to Adjourn the meeting, seconded by Terry Anderson. Respectfully Submitted by Kat Thacker





## Show and Tell

by Kat Thacker

It's always fun to learn something new about our common passion - RB! We had some very interesting examples for Show and Tell again this year - some highlights included; Becky Conrad's several fine examples of "Smoking Memorabilia", and a unique RB Gun Club ashtray. Chuck Heerhold brought a bi-color Clown dish. Harold Brandenburg showed a rare ladies cuspidor. Karen Church had

the largest-sized Sunbonnet planter.

Proving once again to be Queen and King of Tomatoes, Roberta and Alvin Cappel had the tiniest Tomato salt and peppers, and a really charming Tomato cruet w/lid. They also compared their Tomato and Pumpkin pieces - different glazes



used on similar shapes. Thanks to all who brought their unique finds to share with us!

## Hospitality Room Thanks

by Bob Gollmar

Thanks to all of the Royal Bayreuth members who donated homemade goodies, snacks, money, and time to the Hospitality Room at the recent Milwaukee convention. I was pleased with the cooperation from the hotel staff and I was especially glad that the weather was tolerable for this time of the year.

Special thanks to Janet Belcher for all of her work on getting and making baskets and registration packets. Thanks to Roberta Cappel for her decorations - she is always so willing and so good. Thanks to the Fischers for their hours of work in the Hospitality Room. And thanks to all who attended.



## Recipe

submitted by Kat Thacker

We had loads of fabulous homemade treats in the Hospitality Room for our convention - and ALL were greatly appreciated! By popular request, I'm enclosing this recipe courtesy of *Martha Stewart Everyday Food* (Issue #5, September 2003).

### BUTTERSCOTCH BARK

(makes around 2 dozen)

1. Preheat oven to 350. Spread 1 cup each chopped pecans and shredded coconut on baking sheet. Bake until golden, around 5 minutes. Cool, toss with 1 cup semisweet chocolate chips, set aside.
2. Line a 10 by 15 inch rimmed baking sheet with foil. Break 12 graham crackers in half, fit in pan in single layer.
3. In medium saucepan, whisk 12 tablespoons unsalted butter and 1/2 cup light brown sugar over medium heat until smooth. Spread evenly over cracker layer.
4. Bake until bubbly, 10 minutes. Sprinkle with nut topping, press gently into crackers. Cool and



## Welcome Meeting

### Friday, October 13, 2006 (9:00am)

The President's Welcome was given by Tim Sullivan. Introduction of current Board Members started off the meeting:

President - Tim Sullivan

Vice President - Sandy Heerhold (replaces Steve Bartlett)

Treasurer - Carolyn Church

Membership Secretary - Karen Church

Club Historian - Judy Stockwell

Board of Directors

Alvin Cappel

Becky Conrad

Richard Earle (not present)

Mary McCaslin

Nancy Rublaitus (replaces Janet Belcher)

Kat Thacker

Introduction of New Members followed. (Prior to the Welcome Meeting - a special meeting was held for all new members/first time attendees). Those present were asked to introduce themselves, share what they collect and where they are from.

Next on the agenda - brief reports from officers and committee chairs:

- Secretary Karen Church reported 76 members were attending the convention, with 55 booked for lunch and 52 for the banquet.
- Host Bob Gollmar talked briefly about the Hospitality Room - the location and hours.
- Terry Anderson presented us with the programs they had planned for the next two days - the themes being "Clowns" on Friday and "Shoes" on Saturday.
- Auction Committee Chair - Tim Sullivan, filled us in on the auction happening this evening, "lucky" Friday the 13th! Both Roger

Lundquist and CJ James checked over all the pieces very carefully and marked any flaws with notes to alert buyers. He warned consignors to pay attention to their own pieces, adjustments might be needed to the reserve if any problems were found. One of the changes to club auction - there will be a 5% buyers premium added to the winning bid. The "no sale" fee for pieces not meeting reserve is now \$10 for consignors. Both Jane Sullivan and Karen Church will be bidding the reserves. (There are also some absentee bids). We all need to keep in mind that the club auction is one of the most popular features of the annual convention. It helps with our budgetary needs, as well as being entertaining for everyone. We all want to keep it going strong!

• It was announced that Chuck Heerhold will be taking over the Auction Committee Chair next year.

Janet Belcher went over the State Baskets that will be available for viewing in the Hospitality Room, then raffled off. There are 7 different baskets that were donated by generous club members. They were filled to the brim with goodies from different Mid-western states. Tickets can be purchased up until the drawing during the banquet. Shipping will be available for winners who can't get them home otherwise. All proceeds go to help the club's 2007 convention expenses.

Tim Sullivan briefly went over the annual meeting agenda planned for Sat:

The nominating committee chair, Judy Stockwell, will report on current officer's terms.

Board actions taken during Thurs. meeting and preview of items to be addressed at business meeting on Sat;

Discussion of potential convention sites for the next three years. We have been checking out different areas of the country. Pittsburgh, Columbus, Indianapolis, Detroit, Cleveland, and Baton Rouge have all been looked at. Scottsdale and a possible return to Providence were explored. Some comments made by membership included: Ricky Kupferer and Joeleen Passow, who had stayed in Embassy Suites in Lexington for Nippon Society, and Kansas City for RSPRusia. Both were recommended for possible future events. Ricky also suggested Adamstown, PA, which has a huge antique area with lots of malls and shops.

There are several amendments that need to be made to the bylaws - inconsistencies and potential legal issues down the road. First off - the Newsletter Editor should not be a member of the board. The editorial position has no term limit, and is not elected by the membership, and shouldn't vote on board issues. Linda Titus would like to remain the Publisher. We need a new Editor ASAP. Chris Bartlett will remain Newsletter Liaison until the position is filled.

The Audit Committee will be Sandy Heerhold and Alvin Cappel.

Members with birthdays were announced, and the meeting was adjourned to start the ever-popular Show and Tell! Respectfully submitted by Kat Thacker



## Banquet and Entertainment

*by Chuck and Sandy Heerhold*

Another successful banquet! Good food, good conversation and mostly just enjoyable being together with people who share a common interest. Entertainment was provided by "Those Funny Little People". Dressed in leiderhosen, they again delighted their audience. A silent auction was held for 2 wonderful prints donated by Kat Thacker, and we are pleased that we, the Heerholds, now own one of them. The other was taken home by Paul Stratman. The raffle for the 7 donated baskets was held making only 6 people happy. The Stockwell's took home two, the McCaslin's, Paul Stratman, the Pierces, Jim Carter and the Heerholds each took home one. A good way to build up cash in our treasury. Thanks to all who donated and bought tickets.



## Missing Parts

**D**o you have an incomplete piece of Royal Bayreuth? Are you looking for a cup, a plate, a salt shaker, a lid, etc.? Maybe a club member has that missing piece you are looking for. Let us know what you need or what you have to sell or trade. Send your request to Newsletter Editor Kat Thacker to be included in the next issue.

# WANTED

### Beach Babies 5" Plates for Tea Set

HAVE

Goose Girl 4" Plate for Tea Set.  
Will trade for above, or sell

## HAVE

Cover for Full Size Tea Pot for sale  
2 1/2" outside, 1 2/3" inner rim  
Gold Rim around base and top.

Colors: Brown and Light Green to slightly Darker Green  
(Fits 2 Royal Bayreuth Tea Pots I own but already have covers for – a Sunbonnet and one with Sheep)

## CONTACT

ROSEMARIE DE BRUIN  
325 S. WEIMAR ST.  
APPLETON, WI 54915  
PHONE - 920-739-4264

## Business Meeting

### Saturday October 14, 2007 (9:00am)

Meeting was called to order by President Tim Sullivan. We started off the agenda with the Road to Milwaukee - how this convention was put together. Bob Gollmar booked the hotel and ran the Hospitality Room, with help from Janet Belcher, and Alvin and Roberta Cappel. Janet Belcher also pulled together the registration/hospitality bags and raffle for state baskets. Terry and Mary Anderson planned the two programs. Chuck and Sandy Heerhold booked the entertainment for the banquet.

Next, the Audit Committee Report was given by Alvin Cappel and Sandy Heerhold. The books were reviewed and found current and correct. They were approved by all.

The club Treasurer Carolyn Church then gave her annual report. The balance for October 9, 2006 was \$14,736.55. The 2005 auction receipts were \$2849.64. Thanks to the cost-cutting in effect this year on the newsletter, our 2005 dues will cover the actual expenses. Motion was made to accept the report by Chuck Heerhold, seconded by Becky Conrad. Motion carried by verbal ayes.

Secretary Karen Church reported the total membership at 182, with 31 members new to the club, and 32 removed from the roster.

The early Auction report from Tim Sullivan (w/estimated total figures from Carolyn Church) had gross sales at \$42,692 (5% buyers premium \$2134.60) with 59 "no sales" (\$590) making a profit of \$2724.60 for the club. There were 20+ fewer pieces this year than last. Tim stated he had tried to have less scenic pieces this event - far more figurals. (78 pieces came from one person!) Jane Sullivan pointed out that 50% of the no sales were within 1 bid of reserve. (Both she and Karen Church had the nerve-racking job of bidding reserves, with four-way checks making sure of NO mistakes.) A good auction overall - and another fine job from auctioneer Rollie Rosenboom! The new Auction chair Chuck Heerhold was announced. He reminded members to

keep an eye out over the next year for possible auction pieces.

Club Historian Judy Stockwell addressed the membership with her desire to retire from the position. She explained the duties and asked for volunteers. Harriet and Jerry Lavine offered to take over the position. Bob Gollmar expressed his thanks to Judy for her many years of service to the club.

President Tim Sullivan asked Recording Secretary Kat Thacker to read back the motions made during the previous board meeting. The following motions were recommended by the board, discussed, and voted on by the membership:

Motion was made to not include outside (non RB) activities as part of the convention, unless authorized by the Board of Directors. Motion made by Becky Conrad, seconded by Alvin Cappel. Motion carried.

Motion was made to offer one of the remaining RB plaques free to NEW members at convention, or for \$5 to have them shipped. (They will still be available to others for \$15 each). Motion passed unanimously.

Motion was made that proceeds from the state baskets donated at the Milwaukee convention should be used to cover any shipping expenses necessary. Motion made by Harriet Lavine, seconded by Allen Belcher. Motion carried.

Motion was made to have the 2007 convention in Pittsburgh. Motion made by Chuck Heerhold, seconded by Becky Conrad. Passed unanimously.

Motion was made to have the 2008 convention in Columbus. Motion made by Alvin Cappel, seconded by Harriet Lavine. Passed unanimously.

Motion was made to keep the newsletter expenses no more than the revenue from the club dues. Motion made by Becky Conrad, seconded by Alvin Cappel. Passed unanimously.

Motion was made to keep the club dues \$30 at this time. Motion made by Becky Conrad, seconded by Jane Sullivan. Motion passed.

Motion was made to define the dues payment - Jan 1 to Dec 31 is fiscal year. (For new members only: If paid after Sept 1, it counts for next year as well.) Motion made by Becky Conrad, seconded by Alan Belcher. Passed unanimously.

Motion was made to change Newsletter Editor current status as a voting Board Member. Motion made by Chuck Heerhold, seconded by Terry Anderson. Motion passed.

Motion was made that the President must have Board approval to make changes to budget, including any additional expenses. Motion made by Becky Conrad, seconded by Alan Belcher. Motion passed unanimously.

The nominating committee chair, Judy Stockwell, read the club officers/board slate and terms; VP. Sandy Heerhold 06/07, approved Alvin Cappel 06/08, approved. Mary McCaslin 06/08, approved. Richard Earle 06/08 approved (np - accepted via email) Nancy Rublaitus 06/07, approved.

Those finishing out their second board terms in 2007; Becky Conrad and Kat Thacker. Secretary Karen Church, Treasurer Carolyn Church, and President Tim Sullivan will also be completing their second terms.

Chuck Heerhold brought up the idea of "staggering" board members, due to so many going out next year (pres, vp, secr, and trea.) Nominations from floor - called three times/none at vote\*, slate passed. (\*three nominations were made, all three were refused by nominees).

Meeting was wrapped up by Janet Belcher - the hospitality bags were within the budget of \$5 set per bag. She also wanted everyone to purchase additional raffle tickets for the state baskets. Many thanks were given to the members donating them.

Motion was made to adjourn the meeting by Chuck Heerhold, seconded by Mary McCaslin. Meeting concluded at 11:06 AM. Respectfully Submitted by Kat Thacker

## Twelve Events in Wisconsin (with the strains of "The Twelve Days of Christmas" in the background) Memorable Convention Highlights

by Ida Parrott and Fred Zumthurn

- 1** Tuscan Villa on Lake Front Drive – otherwise known as the Villa Terrace, with its decorative arts influence of the Renaissance period fashioned after an Italian villa that the couple experienced on their honeymoon. Its eight-passenger tram could pick up guests from Lake Michigan and transport them up or down the 55-foot climb as they enjoyed a parallel lighted waterway.
- 2** pints of beer at the Miller Brewing Company provided quite a tour considering they actually put out over 500,000 cases a day. We live in a thirsty world!
- 3** careers of Captain Frederick Pabst of Milwaukee include sea captain, beer baron, and real estate developer, but he is most remembered for the fabulous Pabst Mansion built in 1892 in the Flemish Renaissance Revival style embodying the highest standards of the day in architecture, wrought iron work, carpentry as well as furnishings and detail work.
- 4** rooms of Biedermeier furniture and other period arts and crafts in the Milwaukee Art Museum were especially appealing to Fred who has always admired this craftsmanship with its attention to flawless design, smooth lines and natural beauty ahead of its time – remember we're talking 1814!
- 5** kinds of cheese and much more in Monroe, considered the Wisconsin cheese capital. And the beer at Baumgartner's Cheese Store and Tavern wasn't bad either, Fred says.
- 6** Greek statues grace the lovely home of Charles and Sarah Allis on Prospect Avenue. They built their beautiful home in 1911 and later donated the whole home, furnishings included, to the city of Milwaukee as a museum and arts center.
- 7** wonderful days in Wisconsin filled with good friends, good food, and good times.
- 8** -sided Octagon House in Watertown was fascinating with its 54 rooms completely furnished in the 1850's time period. There was also an old barn and the first kindergarten in the United States.
- 9** was the number of Royal Bayreuth items we would like to have had at the auction, but someone else wanted them more.
- 10** Chimneys in Genesee Depot could fulfill the dream of any child, as every room is staged and/or hand-painted. The docents wear white gloves and dress in stage costumes all befitting the time at the marvelous estate of Alfred Lunt and Lynn Fontanne, widely considered America's greatest theatrical acting team.
- 11** examples Scherenschnitte in New Glarus illustrate the Swiss proficiency with scissors in the art of paper cutting. They are also excellent at wood carving.
- 12** antique shops provided us with a great time and a lot of fun plus visits to the Packing House, the Barclay Gallery and garden café, and the Sheraton's "Place to Meat."



*And so as they say: "and a good time was had by all." Thanks for inviting us to join you in the beautiful state of Wisconsin!*



## Royal Bayreuth Collector's Club Treasurer's Annual Report September 16, 2005-October 9, 2006

### Receipts

Balance 9/16/05	\$9,959.95
Membership Dues (New and Renewals)	\$5,095.00
Convention Registrations and Meal Fees	\$3,973.00
Auction (2005)	\$38,190.00
Plaques	\$2,519.53
Hospitality Room (2006)	\$26.00
Hospitality Room (2005)	\$689.50
<b>Balance 9/16/05 Plus Receipts</b>	<b>\$60,452.98</b>

### Disbursements

<b>Convention Expenses</b>	
Gift Plaques and Office Services	\$83.00
Guest Speaker	\$100.00
Culinary Museum	\$164.00
Radisson Hotel	\$1,435.39
Refund of Convention Fees	\$250.00
Restaurant Deposit	\$40.00
<b>Convention Total</b>	<b>\$2,072.39</b>
Postage	\$129.25
Supplies	\$93.71
Hospitality Room (2005)	\$1,025.16
<b>Auction</b>	
Net Proceeds to Sellers	\$35,340.36
Plaque Expenses (Ebay Fees and Postage)	\$94.71
Entertainment	\$745.00
Newsletter	\$5,545.75
Web site	\$500.00
<b>Miscellaneous</b>	
Northfield Insurance Agency (Bond for Treasurer)	\$170.10
<b>Disbursements Total</b>	<b>\$45,716.43</b>
<b>Balance 9/16/05 Plus Receipts</b>	<b>\$60,452.98</b>
<b>Total Disbursements</b>	<b>\$45,716.43</b>
<b>Checkbook Balance 10/9/06</b>	<b>\$14,736.55</b>

## Treasurer's Convention Report

### Receipts

Convention Fees	\$3,912.00
Hospitality Room	\$66.00
Raffle for Pictures	\$136.00
Raffle for Baskets	\$490.00
Club Members who refunded Comp. Rooms	\$217.74
<b>Total</b>	<b>\$4,821.74</b>

### Disbursements

Entertainment (Little People)	\$645.00
Clown	\$50.00
Packing House Restaurant	\$599.22
Hospitality Room	\$40.00
Refund Convention Fees	\$120.00
Postage for baskets	\$30.00
Hotel Bill	\$1,984.18
Welcome Bag Expenses	\$218.89
Printing supplies for convention and auction	\$54.84
<b>Total</b>	<b>\$3,742.13</b>

**Receipts** ..... \$4,821.74

**Disbursements** ..... \$3,742.13

**Club Profit** ..... \$1,079.61

## Royal Bayreuth Collector's Club Treasurer's Report

Aug. 1, 2006- October 31, 2006

Closing Balance- July 31, 2006 ..... \$12,762.55

### Receipts 8/1/06-10/31/06

Membership Dues- New and Renewals	\$580.00
Plaques	\$69.00
Convention Fees	\$3,206.00
Hospitality Room	\$66.00
Raffle for Pictures	\$136.00
Raffle for Baskets	\$490.00
Club Members who refunded Comp. Rooms	\$217.74
Auction	\$42,692.00

**Closing Balance Plus Receipts** ..... \$ 60,219.29

### Disbursements 8/1/06- 10/31/06

Plaques (postage and Ebay fees)	\$11.61
Newsletter	\$708.45
Entertainment	\$400.00
Clown	\$50.00

### President's Expenses

Auction expenses (fuel and tolls)	\$119.08
Expenses for exploring future convention sites	\$161.18
Supplies for auction and convention	\$54.84
Gift plaques	\$51.84
Northfield Insurance Agency (bond)	\$170.10
Refund of convention fees	\$120.00
Refund of hotel room fee (auctioneer)	\$108.87
Hospitality room	\$40.00
Secretary's expenses (postage and supplies)	\$144.45
Four Points Sheraton Hotel	\$1,984.18
Sellers auction profits returned	\$39,985.00
Packing House Restaurant	\$599.22
Welcome bag expenses	\$218.89

**Disbursements Total** ..... \$44,927.71

**Closing Balance Plus Receipts** ..... \$60,219.29

**Total Disbursements** ..... \$44,927.71

**Checkbook Balance 10/31/06** ..... \$15,291.58

## Treasurer's Auction Report

Actual Total Sales	\$40,640.00
Sales Total + 5% Buyer's Premium	\$42,672.00
Paid by Seller for Two No Sales	\$20.00
Deposited in the Bank	\$42,692.00
5% of the Total Sales	\$2,032.00
Donated Piece at the Auction	\$85.00
No Sales (59 x \$10)	\$590.00
Amount Returned to the Sellers	\$39,985.00
<b>Total Profit for the Club (\$2,032+\$85+\$590)</b>	<b>\$2,707.00</b>
Travel Expenses and Tolls	\$119.08
Auctioneer's Hotel Room	\$108.87
<b>Actual Club Profit</b>	<b>\$ 2,479.05</b>

*All submitted by Carolyn Church*

## Royal Bayreuth Holiday Sale

by Tim Sullivan

At the convention in Milwaukee there were pieces offered for sale by members. This year Jane and I agreed to bring several of these pieces home and offer them for sale to those members unable to attend the convention. These pieces are not owned by us but Jane and I will be assisting in the sale of these pieces. Buyer is to pay for shipping and insurance. If you are interested in purchasing any items listed below, please contact:

Tim and Jane Sullivan

585-243-2967

tenebrous@aol.com

Item	Book I Number	Price
Apple Demi Cup and Saucer	454	100
Art Nouveau Lady Box with Lid	768	425
Art Nouveau Lady Candy Dish	760	600
Art Nouveau Lady Pin Dish	769	425
Bassel Pipe Rest	641	100
Bell Ringer Milk	857	150
Bird of Paradise Creamer	610	150
Butterfly Open Wing Creamer	722	140
Clown Red Ashtray	839	150
Clown Red Candle Holder Low	832	150
Clown Red Hanging Match Holder	840	150
Clown Red Mug	828	200
Clown Red Pipe Holder	834	125
DandC Water	871	500
DandC Milk	873	300
DandC Creamer	874	100
DandC Covered Sugar	887	300
DandC Low Candle Holder	893	350
DandC Candy Dish	883	250
DandC Open Salt	898	225
DandC Beer Mug	884	175
DandC Ashtray	878	200
DandC Doubled Handled Open Sugar	890	600
DandC Dresser Tray	870	600
Card Dish	880	200
Suit Dish	888	300
Devil and Dice Demi	897	100
Dachshund Creamer	660	100
Dachshund Hat Pin Holder Dk Brown	236	300
Dachshund Milk	658	175
Devil Red Big Jaw Ashtray	895	225
Devil Red Milk	885	550
Elk Fooled Open Sugar	~	100
Ibex Creamer	750	150
Lampighter Creamer	860	90
Maple Leaf Creamer	361	175
Monkey Creamer Green	628 but green	250
Mountain Goat Creamer	735	100
Oak Leaf Creamer	362	125
Owl Hat Pin Holder	702	425
Parakeet Creamer	616	100
Penguin Hat Pin Holder	241	550
Poodle Milk	661	200
Poppy Red Hat Pin Holder	311	275
Rose Cup and Saucer	354-355	150

Rose Covered Dish w Underplate	439	250
Rose Covered Dish P/W 3 5/8"	~	200
Rose Open Bowl	441	300
Rose Small Milk Pink 3 1/2"	~	100
Rose Gold Milk 3 1/2"	~	225
Rose Red Creamer 3"	~	225
Seal Creamer	680	150

The following pieces are offered by Harold Brandenburg.

Item	Book I Number	Price
Flounder Creamer	681	395
Perch Creamer	670	195
Chrysanthemum Creamer	265	299
Poinsettia Relish	269	255
Lampighter Toothpick Holder	859	245
Lavender Pansy Hair Receiver	~	350
Blue Poodle Creamer	~	500
Each piece is choice and damage free; all have the Blue Mark fully guaranteed 7 day return privilege.		

Harold Brandenburg

662 Chipper Lane

Wichita, KS 67212

(316) 722-1200

hbbrand@cox.net

The following pieces are offered by Daniel Francis.

### DEVIL & CARDS

DandC Full Bodied Hanging Match Holder(#1): A few scratches on front edges. \$2200
DandC Full Bodied Hanging Match Holder(#2): A few worn areas on front edge and a few scratches on back. 5mm linear defect( when the piece was fired) where card box meets body of Devil. \$2100
DandC Humidor: Good condition. Makers mark. \$675
DandC Toothpick(#2): Good condition. Jack of Hearts, King of Clubs. Makers mark. \$275
DandC Toothpick(#3): Small scratches. Jack of Diamonds, Queen of Spades. Makers mark. \$250
DandC Dresser Tray: Face has large scratches/areas of wear. \$450
DandC Candy Dish: Very small scratches-figure. Makers mark. \$250
DandC Hanging Wall Match: Good condition. \$200.
DandC Hanging Wall Match: Very small chip missing-bottom right corner(hard to notice). \$100
DandC Triangle Open Sugar( Master Salt)(#1): Very small scratches, craze line on front. \$200
DandC Triangle Open Sugar(also known as Master Salt)(#2): Very small scratches. 2 fine chips. \$190
DandC Shakers: Salt has small scratches, Pepper has chips on bottom edges and on ends of wings. \$175
DandC Creamer(#1): Good condition, with face showing good detail. Makers mark. \$150 DandC Creamer(#2): Scratches-figure. Only slight detail on face with no horns. \$125
Devil and Dice Demitasse Cup: Small scratches-figure. No Makers mark. \$75
BLACK Devil Creamer: Head glued back on and small chip missing from surface of shoulder. \$175

.... continued on page 16

## Holiday Sale continued from page 15 ....

### TOMATOES

TOMATO/Pepper Mustard: Good condition. No spoon. No makers mark. \$100

TOMATO/Lot of 10 Pieces: \$75

1. Small Milk Pitcher/Creamer(3 1/2" high, 3" in diameter): Good condition. 2. Sugar: Scratch on side. Makers mark. 3. Creamer/Small Gravy(2 1/8" high, 4 1/2" long excluding handle): Good cond. 4. Large Covered Tomato on Large Plate with Curled Handle: Wear on plate. 5. Small Covered Tomato on Large Plate with Curled Handle: same descr. as #4. 6. Small Covered Tomato on Small Plate: same description as #4. 7. Sall(#1): Small scratches. Cork stopper. Makers mark. 8. Sall(#2): Large scratches. Cork stopper. Makers mark. 9. Pepper(#3): Small scratches. Cork stopper. No makers mark. 10. Pepper(#4): Good condition. Cork stopper. No makers mark.

### TERMS: OPEN TO OFFERS

Photos by mail or email. Buyer to pay UPS Store packing, shipping and insurance. Checks will be held for ten days.

Daniel J. Francis, DMD (dentist)

1615 Meridian Ave, Apt 401

Miami Beach, FL 33139

(305) 674-3470

e-mail: dannysobe@msn.com

## Prints For Sale by Kat Thacker



I'm selling two mounted prints of the two illustrations created for the RBCC events. The "Three Clowns" from our 2006 convention and the "Jester" from 2004. They are available in two sizes, 9x12 and 11x14 (both vertical images). I'm offering them as signed, limited-editions, heavy stock, either in B&W or

hand-colored. (The Clowns are shown earlier in this edition of the newsletter.) These pieces are only being offered to RBCC members - the pricing is as follows, per print: Small/B&W \$15, Small/Colored \$25, Large/B&W \$20, Large/Colored \$40. The two images look very nice together as a pair! (Shipping is an additional \$5 each, with a discount available for multiples.)

If interested contact [kat@katthacker.com](mailto:kat@katthacker.com), or call the studio 248.545.0396

## Board of Directors, Planning Meeting Saturday, October 14, 2006 (3:30pm)

Meeting called to order by President Tim Sullivan. Agenda items as follows:

- Secretary's report on convention attendance
- Treasurer's report on convention costs
- Auction report
- Basket review
- Hospitality review
- Reimbursement for expenses - Traveling to check out future convention sites was made by Tim Sullivan. Motion made to reimburse by Becky Conrad, seconded by Alvin Cappel, passed unanimously.

- Budget review for 2006/2007 Newsletter and other printing 2007 Convention

Convention Budget for 2007 was voted on as follows: Registration Fee drops to \$20 per membership (previously \$20 per person). Total Hospitality budget should be no greater than \$800. Entertainment stays at \$700. Motion was made by Alvin Cappel to approve these numbers. Seconded by Sandy Heerhold. Passed unanimously. Also discussed - If it becomes necessary to have Speaker's stipends for Programs - they must be Board approved. Board must always be consulted in advance for any changes/additions to set budgets. Hospitality/additional fundraising: it will be up to the individual hosts whether or not to continue with the state baskets raffle, or any other fundraising. Gift bags should cost the club no more than

\$10 each.

### Advertising

Many of the press releases that Becky Conrad sent out to antique pubs in June (to plug the convention) were run. This is very cheap advertising, just the cost of a letter and stamp. We need to continue.

### Auction expenses

The expenses were kept to the usual sources; auctioneer's room, printing fees, some shipping of pieces.

- Newsletter preparation and production (inc. new Editor) - The cost-cutting changes to the newsletter over the past year have kept it within the budget. It was decided to keep the majority of the issues in black and white, with some color when necessary. Watch page counts. Projected dues should continue to cover the expenses for the next year.

- Committees to be formed

Hospitality for 2007-Sandy Heerhold, Karen and Carolyn Church

Hospitality for 2008

Hospitality for 2009

Auction 2007-new Chair/Chuck Heerhold

Program selection for 2007 convention-Dick Earle

Newsletter author search/Editor - We are still in search for a newsletter Editor since Linda Titus will not be acting in that

capacity anymore. It was decided that we want to concentrate on bringing informational RB articles to the membership. Many thanks to Chris Bartlett for doing a fine job as newsletter liaison for the past year. All articles/photos for the December issue are due to the Editor by Nov. 15th.

Membership-Becky Conrad - We will need to continue placing membership applications wherever appropriate to build membership. The website should also help with finding new members, but will need more upgrades in the future.

Nominating Committee 2007 will be temporarily headed by Alvin Cappel. The whole Board will act as committee. We need nominations for the following outgoing people/positions: President/Tim Sullivan, Secretary/Karen Church, Treasurer/Carolyn Church, Becky Conrad and Kat Thacker/Board members.

Audit for 2007 - Auditing Committee will continue to be Sandy Heerhold and Alvin Cappel.

Web site - We will be looking into finding a new webmaster/host for our website as of December 1st, 2006. Mark Sullivan's company, who have done a great job getting us started up and running for the past several years, will no longer be able to continue.

Meeting adjourned at 5:30.

Respectfully Submitted by Kat Thacker

## How We Met Antiques Roadshow's Executive Producer Marsha Bemco

by Ida Parrott

Rhode Island proved to hold the key to success! Let us explain...

Daniel Buck Soules, last year's keynote presenter at the Royal Bayreuth convention, gave a talk on the ins and outs of how appraisers and dealers appear on the Antiques Roadshow (AR).

After the show, Fred and I spoke with him about how AR had wanted to come to Fresno but our Convention Center was too small, yet we have a lot of antiques in the Central Valley of California.

At the same time, the people in Boston, where AR is headquartered, were then contacting the executive producer of public television, Paula Castadio.

After a lot of negotiating and other details, it was decided that Marsha Bemco, AR executive producer, would indeed come to Fresno for the Annual Society Dinner on September 21, which also featured clips of the new season.

Next, on the list was venue selection. Where to hold the Big Event? Weather was a BIG factor as the previous year produced a sudden downpour just as the steaks were coming off the grill.

After looking at several homes with gardens appropriate for the occasion, we were the lucky winners. This then entailed cleaning, layout, security, and so on, on a grand scale as liability is always a major concern. A big evergreen had to be trimmed, the garage door fell apart 3 weeks earlier, the gardener had to do some major garden manicuring as well as touch up painting, and a whole myriad of other BIG and small details were completed.

FINALLY, the Big Night arrived. Marsha Bemco turned out to be a warm, friendly, and knowledgeable antique buff and gave a delightful presentation on AR from the executive producer's point of view.

She got the full tour including our collection of Royal Bayreuth and RS Prussia, for which many of the club members have been our chief source.

It turned out to be a great evening after all – with beautiful fresh fragrant flowers, a tasty catered dinner, a lovely Indian summer evening, and delightful wafting strains from the classical Spanish guitarist – and surrounded by fabulous Victorian antiques.

And after all this, even Fred and I had a wonderful time!

## Finding Royal Bayreuth in Canada

### Our Canadian Members Share Their Thoughts

by Garth and Kathy Moore, Harry and Jill McClurg, and Don Townsend

The Moores live in Toronto, Ontario. Generally they find some scenic pieces at every show, while figural pieces are not as common. They find it's cheaper to buy figurals on eBay than from a dealer, as there is a better price and more selection online. In the greater Toronto area there are a number of excellent shows throughout the year. Large outdoor shows are held every month during the spring and fall. Many of the multi-dealer shops in Toronto have now closed. The largest quality antique area is on King Street with tourist prices but some excellent dealers. Other areas of the city for antiques are Queen West at Roncesvale, Mount Pleasant Ave, and a few on Queen East. With no favorite shop, they tend to go to the large outdoor shows and large mall shows, with their best buys at auctions out of the city. In the spring they head to the Windsor/Detroit area with a stop in London to visit the small shops and malls there. In addition to collecting figural pieces they also collect "Babes in the Woods". Most of these pieces were found in Southern Ontario and a few pieces came from England. If any members are planning a trip to the Toronto area, the Moores will be happy to provide information on websites, auctions, and show listings. The McClurgs live in Oshawa, Ontario and also mentioned the many summer shows in malls and outdoor antique markets in the Toronto area. Antique shops tend to be solitary and not co-ops as are many in the United States. They purchase most of their Royal Bayreuth at public auctions, recently buying 5 pieces of the "Hunter" scenic. Bayreuth does not show up very often at area sales – they are more apt to see it in antique shops and often at prohibitive prices. A local shop has a 10 1/2" old ivory bowl and water pitcher in the same pattern. Don Townsend is from Waterford, Ontario. He specializes in Corinthian Ware and

has over 150 pieces, most of which came from the United States via sellers in the Antique Trader such as club member Tim Gaudet, and in more recent years via eBay. Generally speaking he feels that Royal Bayreuth is not that plentiful in southwestern Ontario. Items seen at shows are rather common both in mold and decoration. He rarely sees Rose Tapestry or figurals and when he does they are small creamers and not the more desirable items. He goes to few auctions or shows or to many shops but when he does he is surprised to see so little of this beautiful and varied porcelain for sale. He is thrilled when he does and even more when it's something he needs for his collection! Thanks to our Canadian members for their input – good luck in your future collecting!

## eBay Prices

by Becky Conrad

1. Little Miss Muffet Covered Box . . .	\$122.49
2. Sunbonnet 1974 Set of Plates . . .	\$166.49
3. 4" Lady Bug Creamer . . . . .	\$325.00
4. 4" Gray Seal . . . . .	\$151.50
5. 3 1/2" Pansy Pitcher . . . . .	\$80.00
6. Red Devil on Black Clock Face . . .	\$819.40
7. Sand Babies at the Beach Teapot .	\$129.50
8. Devil and Cards Hanging Match Holder . . . . .	\$1,775.00
9. 8" Vase of Two Swans Swimming . . .	\$150.00
10. 4" Platypus Pitcher . . . . .	\$393.99
11. 4 5/8" Polar Bear Vase . . . . .	\$699.00
12. Rose Tapestry Oval Covered Box .	\$148.00
13. 12 1/2" Elk Tray . . . . .	\$202.50
14. 10" Rose Tapestry Dresser Tray . . .	\$162.50
15. 7" Seal Water Pitcher . . . . .	\$1,080.50
16. 6" Apple Water Pitcher . . . . .	\$159.49
17. Pair of Flow Blue Pitchers 19cm . .	\$197.81
18. 4 1/2" Shiny Fish Pitcher . . . . .	\$248.50
19. 4 1/2" Figural Bear Creamer . . . . .	\$700.00
20. 7" Figural Chick Water Pitcher . . .	\$536.51
21. Red Devil Ashtray . . . . .	\$286.01
22. 4" Bassett Hound Candlestick Holder . . . . .	\$130.49
23. Yellow Ashtray with Penguins . . .	\$85.00
24. Rose Tapestry Hat Pin Holder . . .	\$257.00
25. Pair of 5" Vases with Pheasants . .	\$237.39
26. 10" large Bowl – Lady with Pony .	\$237.06

## RBCC Auction 2006

by Tim Sullivan

On Friday evening of the Milwaukee convention, the RBCC held its annual auction. This year members consigned one hundred thirty-five fine examples of Royal Bayreuth china. The auction provided members with the opportunity to sell that extra piece and also add pieces to their collections.

The RBCC earned a five percent buyer's premium on each piece sold, and a ten dollar "no sale" for the pieces that did not meet reserve. The auction was a financial success and earned \$2707 for the RBCC treasury.

Rollie and Ruth Rosenboom provided the club with a professional auction. The RBCC is very fortunate



and we appreciate Rollie and Ruth doing the auction each year. Helping at the sale again this year were Janet Belcher, Alvin Cappel, Roger Lundquist, Karen Church, Jane Sullivan and Sandy Heerhold. Prior to the sale each piece was checked-in and inspected. Becky

Conrad, Alan Belcher and Roger Lundquist helped Jane unwrap and organize the pieces for the auction. CJ James and Roger Lundquist then spent several hours examining every piece for damage or imperfections. They deserve a special thank you from all our members.

Alligator Creamer. . . . .	175	Clown Red Tall Lady Candle Holder . . . . .	800	Flounder Creamer . . . . .	355
Alligator Milk Pitcher . . . . .	200	Clown Red Tall Man Candle Holder. . . . .	600	Frog Water. . . . .	500
Apple Demi Cup and Saucer. . . . .	100	Clown Red Water Head Down. . . . .	300	Girl with Basket Creamer Green . . . . .	240
Art Nouveau Lady Bowl. . . . .	750	Clown Red Water Head Up. . . . .	400	Hawk Ashtray . . . . .	150
Art Nouveau Lady Box with Lid . . . . .	300	Coachman Creamer . . . . .	125	Ibex Creamer. . . . .	150
Art Nouveau Lady Candy Dish . . . . .	300	Coachman Milk . . . . .	165	Iris Creamer . . . . .	275
Art Nouveau Lady Dresser Tray . . . . .	625	Cockatoo Creamer . . . . .	275	Ladies Shoe White . . . . .	100
Art Nouveau Lady Pin Dish . . . . .	350	Corn Butter Pals . . . . .	90	Lamplighter Creamer. . . . .	90
Art Nouveau Lady Vase (Toothpick) . . . . .	675	Crab Box with Lid . . . . .	225	Lamplighter Toothpick . . . . .	125
Basset Brown Candle Holder . . . . .	125	Crow Ashtray Black . . . . .	375	Monkey Creamer Green . . . . .	250
Basset Humidor . . . . .	1450	Crow Creamer Black . . . . .	85	Mountain Goat Ashtray . . . . .	200
Bassel Pipe Rest. . . . .	100	Cucumber Relish Dish		Mountain Goat Creamer . . . . .	100
Basset White Bisque Candle Holder . . . . .	225	(with Hidden Face) . . . . .	225	Mountain Goat Hanging Match Holder . . . . .	250
Bell Ringer Milk . . . . .	150	DandC Beer Mug US Zone . . . . .	150	Mouse Water. . . . .	6000
Bird of Paradise Creamer . . . . .	150	DandC Card Box. . . . .	365	Mussel Box with Lid. . . . .	225
Buffalo Milk . . . . .	165	DandC Double-Handled Open Sugar . . . . .	400	Newfie Water (Black St. Bernard) . . . . .	1175
Bull Creamer Bisque . . . . .	100	DandC Dresser Tray . . . . .	600	Oak Leaf Teapol . . . . .	575
Butterfly Open Wing Creamer . . . . .	140	DandC Full Bodied Hanging		Owl Hat Pin Holder . . . . .	300
Cantaloupe Plate. . . . .	225	Match Holder . . . . .	2500	Owl Milk . . . . .	250
Chimp Ashtray Brown . . . . .	325	DandC Hanging Wall Match . . . . .	175	Owl Water . . . . .	2000
Chimp Humidor . . . . .	700	DandC Humidor. . . . .	550	Pansy Chocolate Pot	
Chrysanthemum Creamer. . . . .	275	DandC Salt and Pepper. . . . .	225	Pearlized Lavender. . . . .	1185
Clover Covered Sugar. . . . .	310	DandC Toothpick Holder . . . . .	275	Pansy Covered Box VL	
Clown Red Match Holder		Dachshund Creamer . . . . .	100	Rose Orange Color. . . . .	450
Seated Closed . . . . .	200	Dachshund Hat Pin Holder		Pansy Cup and Saucer	
Clown Red Large Humidor . . . . .	500	Dark Brown. . . . .	300	Pearlized Lavender. . . . .	300
Clown Red Ashtray . . . . .	150	Dachshund Lemonade Light Damage. . . . .	200	Pansy Purple Covered Sugar . . . . .	100
Clown Red Candle Holder Low . . . . .	150	Dachshund Milk. . . . .	150	Pansy Purple Creamer . . . . .	100
Clown Red Candy Dish . . . . .	150	Devil Red Big Jaw Ashtray . . . . .	200	Pansy Purple Handled Bowl . . . . .	50
Clown Red Creamer . . . . .	150	Devil Red Creamer . . . . .	375	Pansy Purple Low Candle Holder . . . . .	420
Clown Red Hanging Match Holder . . . . .	150	Devil Red Full Body Ashtray . . . . .	200	Pansy Purple Mustard with Spoon . . . . .	135
Clown Red Lady Humidor . . . . .	700	Devil Red Milk . . . . .	550	Pansy Purple Plate . . . . .	125
Clown Red Match Holder		Dice Gaming Box. . . . .	400	Parakeet Creamer . . . . .	100
Sealed Open . . . . .	175	Eagle Ashtray . . . . .	200	Pear Creamer . . . . .	150
Clown Red Mug. . . . .	200	Eagle Milk . . . . .	375	Perch Creamer . . . . .	150
Clown Red Pipe Holder. . . . .	150	Elk Footed Open Sugar. . . . .	100	Pelican Milk . . . . .	175
Clown Red Salt Shaker . . . . .	300	Fish Head Milk . . . . .	170	Penguin Hat Pin Holder. . . . .	450



## Variety is the Spice of Life

by Tim Gaudet

The purpose of this article is to revisit some information about Bayreuth figural shakers and if my title is true, the Tettau factory must have been a "spicy" place to work. One thing that has always amazed me about Bayreuth is the endless variety of shapes and colors available. The designers and decorators were amazingly creative!

Based on my collection, pieces I have sold, photos in Mary's books and other collections, I can document 48 different shapes and over 70 color combinations; for sure there are others I am not aware of.

Fruit can be found in apple, orange, 3 types of strawberry, cherry, plum, lemon, and melon. Veggies include 2 styles of corn, 2 tomato, both cucumber and pickle, radish, and 3 different forms of pepper. There are 3 shapes of shells, while the people shapes include clown, devil and card, coachman, lamplighter, and bellringer.

Flowers and leaves include pansy, mum, geranium, sunflower, 2 sizes of poppy, rose, Japanese lantern, oak leaf, and maple leaf, as well as pinecone. Birds and animals seem to have the greatest variety and include both lobster and lobster with leaf, elk, perch, chick, horse head, duck, alligator, Saint Bernard, trout, 2 styles of owls, crow, and dachshund. To my knowledge no Santa or art nouveau shakers have been found, but I think they must exist... I can picture the Santa hatpin shrunk down in size. How nice it would be to find it sitting on a dusty flea market shelf!

Remember that many RB items are not marked, especially small or irregularly-shaped pieces. Known marks include the blue crest with double or single lion, Depose in gold, blue, or black, Bavaria in block letters in several different colors, and the impressed Deponiert mark. Weight can vary greatly and the owl and grape shakers seem to be heavier and more dense than most of the other shapes. A smart buyer looks at

color, form, design and details... NOT the mark!

The range of colors is stunning! Grapes are fairly common, but I have pairs of grape shakers in 14 different colors. Included are satin, matte and glossy finishes, that when seen together in a group, make a truly amazing display. Pansies come in purple, magenta and white satin; clowns are found in red, yellow, green, and white satin. Rose pieces are seen in solid red and solid gold, pink/white and pink/yellow. The Saint Bernard has at least 3 different combinations of brown, black and gray. I have pairs of poppies in 7 different colors in glossy, matte and satin finishes.

If you are a true purist you want a salt and pepper with different-sized holes, but I know for a fact that they sometimes left the factory with 2 salts or 2 peppers as a pair. I have 4 different sets that I bought from friends in Maine that have the same-sized holes, and I know for sure that these pieces were always in the original owner's families like that; they either left the factory that way, or perhaps, when unpacked at stores for sale, they simply got mixed-up on the shelves.

The biggest unanswered question is... what else is out there waiting to be discovered? Does a Santa or a figural eagle shaker exist? Is there an open-mouth bass shaker to match the different sizes of pitchers? I have had a poppy sugar, creamer and gravy boat in a matte finish the color of coffee with blue highlights, but have never seen the shaker in that rare color. The search for the next great find is what makes us the antique junkies we have all become! Happy hunting.



Poodle Creamer Black.....	125
Poodle Creamer Blue .....	400
Poodle Milk .....	200
Poppy Bowl Matte Finish.....	130
Poppy Compote Lavender .....	150
Poppy Lavender Tea Strainer Purple.....	300
Poppy Red Hat Pin Holder .....	200
Rabbit Creamer.....	1300
Rooster String Holder .....	200
Rose Gold Milk .....	150
Rose Pink Covered Box .....	200
Rose Pink Mustard .....	75
Rose Pink Creamer .....	100
Rose Pink Cup and Saucer.....	125
Rose Pink Milk.....	200
Rose Pink Open Bowl .....	300
Rose Pink Salt and Pepper .....	225
Rose Red Creamer .....	150
Santa Creamer Red.....	1300
Santa Hanging Match Holder Green.....	6000
Seal Creamer .....	150
Seal Water.....	1750
Strawberry Bud Vase.....	625
Strawberry Candle Sticks .....	525
Strawberry Honey Pot	
(Very Rare Slotted Lid).....	485
Sunbonnet Demi Cup and Saucer	
Wednesday Mending .....	120
Sunbonnet Master Nut	
Wednesday Mending .....	110
Sunbonnet Nappy Monday	
Washing 6 1/4 x 1 1/4 .....	165
Sunbonnet Toothpick Monday Washing ..	185
Sunflower Creamer .....	175
Sunflower Milk.....	500
Turkey Ashtray.....	525

