



Three covered cheese dishes; candle/lady, sunbonnet and couple. Bottom trays 3" long, covers 2" tall at top of handle

Royal Bayreuth Miniatures

by Wanda Friedrich

Royal Bayreuth miniatures are the rare small scale pieces that are somewhat difficult to find. Often times, because they were considered "toys", they were broken by children playing w/ them, or had tiny parts thrown away. Not too many survived intact from the turn of the century when they were made. I believe RB miniatures were only exported to the United Kingdom or Australia, because I've only found three in the United States.

The majority of the miniatures I have are the two-piece cheese dishes. I now have thirty-seven, each of which display a different scene. I never thought when I first started collecting these that there would be so many different designs made by RB. The one that has proven to be the most difficult for me

to find has been the polar bear scenic. This would be the most cherished of my minis, for as many of you club members know, we are passionate about collecting RB scenic polar bears! (If anyone comes across this particular item, especially if it's for sale, please DO let me know!) I am also looking for the Sunbonnet Babies Sunday/Fishing scenic to complete our Sunbonnet series. It would be wonderful to eventually own one of each scene that RB created in the Scenic cheese dishes.

Another shape of miniature would be the coffeepots w/ lids. These also have the RB scenes on them. I personally don't have too many of these - but would like to add more to my collection.

The miniature puzzle jugs, shaving mugs, bean pots, candle holders, shoes, vases, posy baskets and sprinkling cans are all very scarce, so I have very few of these. The one I have managed to find is the polar bear shaving mug - it's just beautiful!

Mush sets are also considered miniatures, and the complete sets are hard to find. I am always on the

Continued on page 2



1



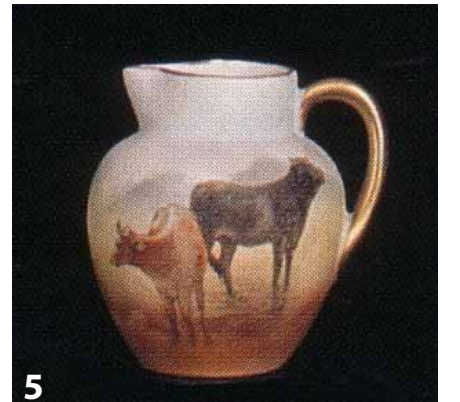
2



3



4



5



6

7

Royal Bayreuth Collectors Club

www.royalbayreuth.org

President

Sandy Heerhold
808 Black Walnut Drive
Sugar Grove, IL 60554
630-466-7601
lyricpoet@juno.com

Vice President

Terry Anderson
1734 Telemark Drive
Rockford, IL 61108
815-397-4189
tande4343@aol.com

Treasurer

Carolyn Church
110 Blackwood Street
Beaver Falls, PA 15010
724-846-4526
jkc110@comcast.net

Secretary

Karen Church
110 Blackwood Street
Beaver Falls, PA 15010
724-846-4526
jkc110@comcast.net

Executive Board of Directors

Alvin Cappel
830 Laurel Avenue
Ashland, OH 44805
419-289-2493
arcappel@excite.com

Becky Conrad
12355 North Upper Lakeshore Drive
Monticello, IN 47960
574-583-3002
becky.c@bethantiques.com

Mary McCaslin
6887 Black Oak Court East
Avon, IN 46123
317-272-7776
maryjack@indy.rr.com

Ida Parrot
2051 East Shaw Avenue
Fresno, CA 93710
559-288-4775
marian937@comcast.net

Nancy Rublaitus
2713 Everett Road
Ottawa, IL 61350
815-434-4943
mikeandnancy53@yahoo.com

Kat Thacker - **Editor**
311 West Drayton
Ferndale, MI 48220
248-545-0392
editor@royalbayreuth.org

Historian

Jerry and Harriet Lavine
7 Quail Run
Canton, MA 02021
781-821-1202
hljl1000@yahoo.com

Royal Bayreuth Miniatures continued...

lookout for odd bowls and creamers in Sunbonnet and nursery rhyme patterns to finish off my sets.

Now the hardest to find, and the ones that command the biggest dollars, are the miniature furniture pieces. I am not fortunate enough to have any of these in my current collection, but I hope to someday own at least one piece! (I'll have to talk one of the two individ-

uals who I know own them into parting w/them first...)

There are also sets of children's dishes (tea pots, sugar, creamers, cups & saucers) that are great to have in a miniature collection. I have a few sets of these.

Oh, I almost forgot this one - tapestry ring trees. I also collect these. They seem to qualify for miniatures, along with my cat head bank!

I am sure there were many other different Royal Bayreuth miniatures made - but these are the ones I've learned about through years of collecting and information from fellow collectors. It would be wonderful if anyone of our membership out there has found additional varieties and would bring these pieces to light at the next convention! It's extremely important to share knowledge amongst the RBCC members, and a great way to connect through our shared passion!

Happy Antiquing!





CALL FOR 2007 AUCTION PIECES

by Chuck Heerhold

Time is closing fast and we are just about ready for the auction in late September. We have approximately 100 pieces committed thus far. Would like to get, maybe, 30 pieces more. Please check out your basements, attics, or storage spots to see if you have a few pieces lying around. Please remember this is a Royal Bayreuth auction, not just a

FIGURAL AUCTION, and most pieces will be accepted. I would like to thank Rebecca and Jim Alesio, Harold and Nancy Brandenburg, Art Ward, Jerry Lamb, Becky Conrad, Steve and Chris Bartlett, Judy and Ken Stockwell, and Harriet and Jerrold Lavine for their pieces. You can contact Chuck Heerhold, auction chairman, @ 630 466 7601 or e-mail lyricpoet@juno.com for answers to any questions or submit pieces. We hope to have a well-rounded auction so there will be something for everyone. A current auction list is available on the Web site.

Some Notes on Miniatures

from Judy White

In my years of collecting miniatures, I have come across many different items with the "hunt scenes". Most minis are unmarked, but a few have the blue or green mark. In some cases, identical pieces to those marked RB, are marked "Gemma". eBay has proven to be a good place to locate minis - many are coming from England.

Photo 2

Three dosers; the two blue are "T" marked. Largest is 3 1/2" long, smallest is 2 3/8"

Photo 6

Four covered cheese dishes; the 3 in front marked Gemma w/crest, crown above. Cheese set above; women w/ sheep farm scene, BM (all cheese dish dimensions: bottom trays 3" long, covers 2" tall at top of handle)

Photo 7 Marks; "Gemma" crest w/crown

Photo 8

Two urns with lids; Polar bears, marked Germany, 4". Fairy, UM, 3 1/2"

Photo 9

Three mini pitchers in hunt scenes, UM, 2"

Photo 10

Two puzzle jugs; Sheep, GM, 2 5/8". Children decoration, UM, 3" (I have a mini toy child's set in this same decoration, also UM)

Photo 11

Hunt scenes; stubby, three-footed vase w/handles, UM, 2 1/4". Covered, long-handled bean pot, 2 3/4"

Photo 12

Small tapestry shoe, "T" mark, 3 1/2". Strawberry stickpin holder (has hole in heel bottom for hanging) UM, 3 3/4", may or may not be RB

Photo 13

Two scenic shoes; large hunter with dogs, BM, 5 1/4" long. Small hunters on horseback, UM, 4"

Photo 14

Five mini coffeepots w/lids, all UM, all 3 1/4"

Additional pics not used; Covered cheese sets in courting scene, cows, Sun-bonnets, farming scenes, boy w/donkey, and hunt scenes



Two mini shaving mugs; polar bears and swans, both 2"

from Mary McCaslin

Several of these are reproduced (with her permission) from her two fine collector's guides on RB.

Photo 1

Two mini watering cans, both in swan/tapestry pattern, gold trim. right-handed & left-handed, 2 3/4", BOTH VERY RARE!

Photo 3

Mini parlor set in rose tapestry w/gold trim; table, BM, 2 3/4" L x 2" W x 1 3/4" H. armless chair 3 1/4" H. arm-chair, BM, 4 1/4" H. settee w/arms & 8 legs, 4 5/8" L x 1 1/4" W x 3 1/4" H

Photo 4

Ewer/bulbous in rose tapestry, 2 1/2". Coal scuttle in rose tapestry, 3"

Photo 5

Mini cow pitcher, tapestry, black, 2 3/4"

Note: Our thanks to everybody who helped with pictures and info on this subject. There seem "loads more" items in this appealing category. We tried to show a good cross-section of styles and patterns, but didn't have room for all the photos. We really appreciate your submissions regardless!

President's Message

by Sandy Heerhold

We are fast approaching another convention. It is hard to believe that it is just about 4 months away. Please mark your calendars for the dates, September 27 through September 29, 2007. This year we will be going to Pennsylvania at the Embassy Suites in Coraopolis which is near Pittsburgh. This location is just 6 miles from the airport and a complimentary shuttle is provided by the hotel. Please check out the hotel's very informative Web site at www.embassypittsburgh.com to see their amenities.

The Embassy is situated amidst many attractions and nearby restaurants. We have a very reasonable room rate of \$105 per night which includes a cooked to order breakfast and a nightly manager's reception. During this two hour reception, beverages are served along with typically a vegetable platter, chips & salsa, and an appetizer. Each two room suite consists of a living room and a private bedroom. There is a reasonably priced restaurant on site, The Foggy Bottom Bar and Grill. Please make your reservations by Wednesday, September the 12th by calling the hotel at 412-269-9070 or 1-800-Embassy and mention our club to get the \$105 rate.

An additional table can be rented for your room for \$5. Please make arrangements directly with hotel for these table rentals.

Here are a few highlights of what is planned during convention. We once again will be having an ice cream social on Thursday evening. During the social, we will be entertained by the Pittsburgh Banjo Club. We are also planning an informal lunch for Friday at Primanti Brothers Restaurant. Their claim to fame is creating an entire meal in a sandwich - in addition to meat, you get your fried potatoes and Pittsburgh-style coleslaw (no mayo) right on the sandwich. Regulars at Primanti's suggest the double egg and pastrami version to get an authentic taste of this Pittsburgh favorite.

We once again will be holding an auction on Friday evening. We are fortunate to again have Rollie Rosenboom as our auctioneer. We have approximately 100 pieces consigned so far. Should you look in your cabinets and find that you have pieces you would be willing to submit to our auction, please contact our auction chairman, Chuck Heerhold. Our banquet is planned for Saturday evening. Both the banjo club and Primanti's can be Googled for further information.

I would like to thank all of you

who have stepped up when I asked for assistance. Thank you Chris & Steve for planning the programs, and to Mary and Harold for doing the programs. Thank you to Joanne & Paul for taking on the hospitality responsibilities. Thank you Alvin for working on officer selection. Thank you to Becky & Harriet for seeking out convention sites. Thank you to Terry for being my right hand. Thank you Kat for continuing to provide a quality newsletter. And thank you Gregg for doing a fantastic job on our Web site, www.royalbayreuth.org.

Thank you Chuck for coordinating the auction. Thank you Karen & Carolyn for keeping me focused. These are the type of people needed to continue the club. Without volunteers such as these, we would no longer exist. If anyone would like to volunteer to take on any responsibility, please contact me. I am sure that I can find something for you to do. Should I have overlooked anyone, be assured that your efforts are appreciated. It takes a whole bunch of people to be successful in the running of an organization.

I am looking forward to renewing old friendships that have been formed at our annual convention, and would like to see some new faces attending. See you at the Embassy Suites!



In Memoriam

by Tim and Jane Sullivan

The RBCC has lost a valued member and wonderful, generous collector. Sam Breece passed away on March 28. Members who have attended the conventions for the last several years will remember his easy out-going manner, his booming voice and his special friendship. Those of us that came to know Sam, discovered his passion for his family,

Ohio State University and certainly the collecting of Royal Bayreuth. Below is a portion of Sam's obituary.

GREENSBORO - Following a full life that was marked by a devotion to his faith, his family and his community, Robert Samuel Breece, Sr., 71, passed away on Wednesday, March 28, 2007, at his home.

He grew up in Central Ohio and after high school graduation, he enrolled at Ohio State University, where he received his bachelors of Science degree in geology. While attending OSU, he met his wife, Judy and they were married on June 22, 1958.

After leaving OSU, Sam served in the U.S. Army and worked with the U.S. Map Service for Lunar Research. He worked on the first mapping project of the moon. After his discharge, he began his lifelong career in the construction field, he is founder and owner of

Breece Enterprises, Inc., a family business located in High Point.

In recent years, he spent time exploring various destinations with his wife, including China, Greece, New Zealand, Egypt, Ireland, France, the Canadian Rocky Mountains and Alaska. Closer to home, he enjoyed sharing frequent weekends in the North Carolina mountains and spending Thanksgiving holidays along the Carolina beaches with his children, grandchildren and extended family members.

In addition to his wife and sons, Mr. Breece is survived by his brother, Richard of Columbus, Ohio; daughter-in-law, Beth Bryan Breece; grandchildren, Haleigh Hawthorne Breece and Jacob Myers Breece of High Point; and many nieces, nephews, cousins, and friends.

Published in the News Record on 3/30/2007.

Secretary's Message

by Karen Church

It's been another busy start to my last year as the club's secretary. I have been getting membership renewals and roster information ready. Please let me know of any changes with your addresses, phone numbers and email addresses. I'll submit them in the next newsletter.

We have had 29 members that have elected not to renew. I'd like to give a big thanks to Chuck Heerhold who called everyone on the list trying to get people to stay with the club. The total for club membership right now stands at 156. The convention will soon be here and plans are well under way. Hope to see you here!

Get Well Wishes

We've just learned that **Bob McCaslin** is facing surgery. We ask for your thoughts and prayers to support Bob, Mary, and their family.

Welcome Back

Members That Rejoined
Carol & Terry Seggebruch
 9520 N. Brisbin Rd.
 Morris, IL. 60450-9326
 815-942-6230
 E-mail: tercarseg@aol.com

Changes in Membership Information

Judy & Ken Russell
 85 L Victoria Rd
 St Kilda,
 Dunedin 9012
 New Zealand

Gerry & Jim Balazs
 19191 Harvard Ave. #134F
 Irvine, CA. 92612-4654

Steve Mullins
 The American Toby Jug Museum
 910 Chicago Ave.
 Evanston, IL. 60202

Becky Conrad
 becky.c@bethantiques.com

In Deepest Sympathy

The club has recently been informed of two club members who have passed away. They are **Sam Breece** and **Joe Lautsch**. We would like to express our deepest sympathy to their families.



Royal Bayreuth Friends

by Steve Bartlett

The Bartletts, Stockwells and Lavines met in Providence, RI on Saturday, May 12 for lunch at Hortons Seafood and then had dessert at our house. This picture is of the six of us on the deck. We are all planning to attend the 2007 convention and are excited about seeing our RB Friends again in Pittsburgh!

New Member Profile

by Mary McCaslin

Welcome **Phaleta Sergeant** of Topeka, Kansas!

I called Phaleta and had a very pleasant phone visit with her. She was born in east Iowa, in the Davenport/ Mississippi River area. She is the mother of 3 sons, one is still living in the Topeka area, while the others have scattered as most children do. She does miss the "baby sitting" by not being near them. Phaleta is a widow now. Her husband was not quite as interested in antiques as she is, but he was always there to drive her to attend antiquing events & shows.

Her interest in Royal Bayreuth started at an early age. Her Grandmother had a "Grape" set which included the sugar, creamer, salt & pepper shakers. Phaleta remembers gazing at them tucked away in Grandma's china cabinet. (It was very possibly a wedding present from around the turn of the century). Her Mother also had a Devil & Cards creamer, as well as a Shell piece, which Phaleta has now. She has been collecting for about 50 years. The first RB piece she bought was a Lobster creamer. Her RB collection currently

consists of about 150 pieces. Her favorite item is a Pansy creamer, to which she would like to add additional pieces of this pattern. Another favorite is her large Orange lemonade pitcher.

She remembers attending a show in Lawrence Kansas, where a dealer had a beautiful Lettuce leaf demi cup and matching saucer. The cup had a lobster handle, which she thought was rare and unusual. She was very happy that she paid only \$15. for it. I told her we all need a good buy like that once in a while!

Phaleta also collects Early American Pattern Glass.

I told her about the good times that we have had at our annual Conventions, and the nice people she would meet, and of course, all the beautiful RB she would see. She said she would sure try to attend one when the venue was a little closer to her home.

Editor's Message

by Kat Thacker

Hello fellow RBCC members! Summer seems "officially" here this Memorial Day weekend... It arrived in full glory here in the Midwest with trees, grass and flowers seeming to green up and blossom overnight.

It is hard to believe we already need to make our reservations for the 2007 Pittsburgh convention... but summer-time flies by as everyone knows, and September will be here before we know it! You can find lots of info about the hotel and surrounding area on our Web site (under CONVENTIONS) at www.royalbayreuth.org.

Speaking of our Web site, Gregg has been hard at work getting things running properly. Please take the time to visit it and check out the "member's only" area. This area of the site will be frequently updated with any "hot" news you'll need for the convention. And please, don't forget to send me any articles or info, especially for the September edition of the newsletter - it will be the last before the upcoming convention! *****ALL ITEMS ARE DUE AUGUST 6th***** It's been great getting the informative articles and photos from our members - but we need YOUR ideas to keep the newsletter interesting and educational for everyone.

One more thing I'd like to address at this time - our little "glitch" in the last issue of the newsletter. We had an unfortunate printing error with the wonderfully informative cover article on RB Shoes (by Cathern James). The issue had been proofed multiple times, by multiple people, and looked perfect in the files. Something "changed" when the computer sent the files to printing phase. These things can happen with the current technology. Linda and the gang at Images in Ink reran the complete article and sent it out the following week to our membership. (You should have received it by the end of March). Our thanks to them for quickly straightening out the problem and getting this fine article to our club members.

Web Site News

by Gregg Thacker

Thank you for your wonderful response to the club's new website. Since launching in March we have had over 845 visits and more than 14,200 views! Now, when you search for "Royal Bayreuth" on Google, our site will appear in the top five or ten listings. The results are not as high on Yahoo - we need to work on that.

We actually have two Web sites. When you visit the home page at www.royal-bayreuth.org you can select a slow-speed version (phone connections AKA "dial-up") or a high speed version (DSL or cable connection). The content is very similar - the high speed version shows some of our favorite pieces and is a little more fun and graphic.

In March we added the club's first newsletter (from March 1996!) and the March 2007 newsletter to the Members' area. More newsletters will be added soon.

We also added convention photos from 2004, 2005, and 2006. If anyone has older photos to add to the site please send them to Kat or I.

The Members' area requires a user name and password for login as shown. If you have trouble accessing the Members' area, you may need to "refresh" or "reload" the web page in your browser and/or empty your cache to see the fresh versions. A link on the Members page will explain how to empty your cache if you are unsure.

**User name: rbclub
password: rbjoy1**

We will continue working with related Web sites to exchange links and promote our 2007 convention. If you would like to add links to the club's Web site (at the Board's discretion), have any questions, or ideas to promote the site please send a note to editor@royalbayreuth.org.

2007 Convention Hospitality Notes

by Joanne Lundquist and Paul Stratman

The Bovine Bistro will be the place to stop and chew the cud (fat) about all the exciting things going on during the Royal Bayreuth Convention in Pittsburgh.

Surprises, fun and silly things will greet you when you decide to have a mooing good time with us at the Bistro. We will need members of the entire herd to assist us in making this a truly

fun and memorable experience. All donations of a Bovine nature will be greatly appreciated including snacks of all kinds.

Hours of operation will be determined by FARMER BROWN, depending on meeting times and other scheduled activities. Looking forward to seeing you in Pittsburgh.

Royal Bayreuth Collector's Club Treasurer's Report

by Carolyn Church

February 1, 2007 – April 30, 2007

Closing Balance - January 31, 2007\$15,441.08

Receipts 12/1/07 - 4/30/07

Membership Dues - New and Renewals\$1,442.50

Closing Balance Plus Receipts:\$16,883.58

Disbursements 2/1/07-4/30/07

Plaque Expenses \$10.75

Newsletter \$884.19

Web site \$200.00

Disbursements Total: \$1094.94

Closing Balance Plus Receipts:\$16,883.58

Total Disbursements:\$1,094.94

Checkbook Balance 4/30/07:\$15,788.64

Musings from an Advanced Collector

By Judy White

Jack Williams and I met at the Del Mar CA show April 20, something we do every three months. Seems it takes less and less time to walk the show these days as the quality of the merchandise dwindles with more and more non-antiques showing up in the booths. Gratefully, there are still those few quality dealers who show up, some of them having Royal Bayreuth among their offerings.

Once finished with the show, we sat down to talk about Joyce, who passed away a year ago April 23, and about their history with antiques. They met in the mid-60s in Indianapolis, and I doubt it would surprise any of us, they went to auctions on dates. Jack had always been a collector--stamps, coins, car magazines and such--but it was new for Joyce. Once married, they attended household auction for furniture and items for their home, including carnival glass and china. At the occasional antique auction, they saw the prices realized for some of the items they had seen go for almost nothing at these household auctions, and these "collectors" soon became "dealers," especially since they were rapidly running out of room at home. (Does that sound familiar?)

When Jack was transferred to Rye, NY, a friend talked them into taking a booth at the Rye Ridge Shopping Center one-day antique show. They took a little of everything, including a spool cabinet, some furniture and china, and sold \$2,800 worth of merchandise. They were hooked, and although both continued to work for many years, they also did shows.

They picked up a devil and cards milk and a melon creamer along the way and sold them immediately at the next New York City swap meet so started to buy Royal Bayreuth whenever they could. When they moved to Albert Lee, MN, Joyce opened a shop. One of her frequent consigners was "Junk Joyce" (so named by Jack--his wife became "Antique Joyce."), who bought whatever, wherever, but those things paid the rent on the shop!

Another job transfer brought them to CA. When Joyce saw the "outland-

ish" prices oak furniture was going for there, they went back to MN and filled a 24' U-Haul with it and brought it to CA to sell to dealers. Going prices in MN at the time were about \$30-\$40 for a round oak table, and \$20 each for pressed-back chairs; CA prices were \$400-\$600 and \$100 each, respectively. Once they decided to move to CA, Joyce and Jack brought two more U-Hauls full of the oak furniture, which sold right away. Joyce branched into china and glass, including more and more RS Prussia and Royal Bayreuth. Their first big buy of RB was six pieces of Devil and Cards for less than \$200. They didn't know much about pricing the Bayreuth, but once they found the two Raines books, another dealer told them to multiply the guide prices by 110% for each year after the list was published to find the values.

As time went on, they had several regular customers for Bayreuth, sometimes selling all that they had accumulated to the same person at a show. By then they were doing the Pasadena, Santa Monica and Costa Mesa shows, where they met several well-known film people: Cher bought devil and cards items after she did the Witches of Eastwick film, Whoopie liked the figurals, and Mrs. Michael Eisner of Disney bought a pair of tall elk candlesticks.

Jack and Joyce found that things come and go in popularity, but that Bayreuth always captured attention. They featured several pieces in a lighted showcase near the front of their booth at shows. Asked about the rare pieces they had had, Jack talked of the Devil and Cards bowl with a full figure devil sliding head first down into it. There were always some special finds among the collections they purchased over the years. One funny story is about the woman who came into the booth and said she had the largest creamer and sugar ever seen which she would sell for \$150. It was actually a peach pearlized poppy water and covered cracker jar.

House and Gardens TV featured the Williamses in a 15-minute segment, where they showed the variety of the items Bayreuth made and showed the

different sizes of them. One woman who was watching the show called and said she had three Santa items for sale, which they bought, and, along with a red Santa pin dish found in a mall, sold all four pieces to the same collector. One woman at Hillsboro bought 30 creamers, milks, and waters at one show. She bought 20 more pieces at the next show.

Now that Joyce is gone, Jack is no longer doing the shows, but has started to sell on eBay.

Over the years, Joyce and Jack became good friends as well as dealers to me. Joyce had the best eye of anyone I know; she could spot damage and flaws on any piece and always pointed them out to prospective customers. She was very honest as well as discreet, never talking about her customers or what they had bought or how much they had paid. Because antique selling was her business, not her hobby, she and Jack devoted pretty much full time to it and her prices were a reflection of the time, gas, phone bills etc. required for her to find the rare pieces. Her record keeping was meticulous, with detailed receipts given for each purchase. Jack recalled that she really loved the "hunt" and never tired of it. She loved to travel and would stop at every shop along the way. She loved finding a great piece. Those of us who had dealt with her always looked forward to her booth at the convention to see what she had managed to find.

The Williamses have advanced the knowledge of Bayreuth and have unearthed some previously unknown pieces. We are grateful.

eBay Prices February 2007

by Judy Stockwell



Robin Ashtray, Blue Mark \$188.26

Pineapple Marmalade

with underplate \$281.51

Dutch Girls Decorated Vase,

BM, 5 1/4" \$80.00

Polar Bear Creamer, BM, 4" tall \$275.00

Vase 5 1/4" with 2 Horses, unmarked \$140.00

Ibex Creamer, 4 1/2" tall, BM. \$250.00

Ibex or Goat Match Holder, BM, \$213.51



Rose Tapestry Cracker Jar, BM, . . . \$400.99

Humidor Arab on Horse \$89.00



Pearlized Oak Leaf Water, BM,

6 1/4" x 9" \$921.01

Dresser Tray, Man in Boat fishing \$162.50

Would You?

by Mary McCaslin

Have you ever picked this "cruet" up at a show or sale? Probably NOT, as it looked like the artist had just dabbed color on the piece at the end of the day. Little did he or she know that they had just produced a good, rare piece of Royal Bayreuth, most likely one-of-a-kind! It has the old familiar blue mark on the bottom. How many cruets have you seen in Royal Bayreuth? The beautiful "Princess Stephanie" bird piece is the only other one I know of. Cruets are usually rare, or considered a good find in any type of antique. This PEAR-shaped cruet has a perfect original cork stopper. Just looking at this piece, I thought the



colors looked like RB's special coloring. To me, I think their green, orange, blue, red, etc. have their own distinctive RB hue. Often, the color may very well be what proves it IS Royal Bayreuth on many unmarked pieces.



Faux Royal Bayreuth?

by Sharon Boynton

I think that my recent purchase is rather interesting and wanted to share with the RB organization. The enclosed photos are of a Royal Bayreuth (?) Plate that I recently acquired. It appears to be a 10 inch cake plate with an appropriate RB mark on the back. However, it also has two other marks – "Warranted Roman Gold" and "Hand painted Roses Gloire de Dijon."

As for the "Gold," it is obvious that someone has applied a border of raised gold dots. The front is signed H. Wagner on one of the leaves, contrary to the "Hand painted mark" on the back. The roses appear to be stenciled and airbrushed. There is also a piece of tape with a name and address written in pencil and date of October 31, 1922. The condition is good except for a few scratches in the center that are barely visible.

I purchased the plate online with the feeling that the marks were misleading, but my curiosity got the best of me. The moment I saw it, I wanted to know more. The price was right, \$17.99 and the plate is lovely, despite the deception. I wanted to share this unique plate with other Royal Bayreuth collectors with hopes they will join me in a little smile at the lengths some people will go to deceive.