

Rare RB Figurals

by Kat Thacker



At our convention in PA this past Autumn, Harold Brandenburg shared a program on Rare RB Figurals. He conducted a survey of members, collectors and dealers who he considered knowledgeable on our porcelain, and these are the items that they classified as "RARE" in the RB line. We have included photos when they are available.

Water Pitchers: Chimp, Moose, Black Devil Head, Platypus, Flounder, Rose, Open-Wing Butterfly, Green Clown, Opossum, Brown Santa, Snake - white, purple and green varieties, Mum or Geranium - blue versions, Orchid, Turtle, and Kangaroo.

Milk Pitchers: Tiger, Horse Head, Kangaroo, Beetle, Platypus, Moose, Rabbit, Gazelle Stirrup, Flounder, Perch, Green Cat, Blue Doxy, Magenta Iris, and Leopard.

Creamers: Tiger, Leopard, Brown Mouse, Santa Bust, Bat (3 3/4"BM), Fox/Wolf, Dutch Boy and Girl, Boy/Fishnet, Ostrich, Chanticleer, Boy/Turtle Head, White Santa, Corn, Horse Head, Purple Lobster, and Green Owl.

Covered Sugars: Horse, Alligator, Maple Leaf, Geranium, Santa, Ladybug, Perch, Art Nouveau Lady, Open Alligator, Clown - yellow or green variety.

Covered Pieces (other than Sugars):

Art Nouveau Lady, Lobster Humidor (purple), Oak Cracker Jar, Shell Hair Receiver, Shell Humidor (black & white), Chimp Humidor (2 sizes), Bass-set Humidor, Boar Box, Santa Humidor (large and small), Santa Mayo, Dice Box, Pansy Cracker Jar, Pear Cruet, Tomato Cruet.

Hat Pin Holders: Santa - green or brown, Rooster, Clover, Lily, Art Nouveau Lady, Crocus, Oyster & Pearl, Poppy, Lamplighter, Coachman, Bell Ringer.

Candle Holders: Santa, Tall Chimp, Horse Head, Elephant, Lady Clown, Fox, Devil & Cards (tall version), Low Chimp, Art Nouveau Lady, Monk (8"BM).

Salt & Peppers: Horse, Perch, Chick, Alligator, Pine Cone, Pickle, Robin, Duck, Barn Owl, Corn, Cucumber, Sunflower, Trout, Saint Bernard, Clown - green & yellow, Oyster & Pearl.



Continued on page 2



Royal Bayreuth Collectors Club

www.royalbayreuth.org

President

Sandy Heerhold
808 Black Walnut Drive
Sugar Grove, IL 60554
630-466-7601
lyricpoet@juno.com

Vice President

Terry Anderson
1734 Telemark Drive
Rockford, IL 61108
815-397-4189
tande4343@aol.com

Treasurer

Harriet Land
1800 Country Club Road
Senatobia, MS 38668
662-560-9297
ha47@earthlink.net

Secretary

Onita Pierce
205 Candlewick Loop
McCormick, SC 29835
864-391-2652
okp205@wctel.net

Executive Board of Directors

Christine Bartlett
1320 Waterford Drive
East Greenwich, RI 02818
401-885-5889
dufferdog@aol.com

Harold Brandenburg
662 Chipper Lane
Wichita, KS 67212
316-722-1200
hbbrand@cox.net

Alvin Cappel
830 Laurel Avenue
Ashland, OH 44805
419-289-2493
arcappel@excite.com

Mary McCaslin
6887 Black Oak Court East
Avon, IN 46123
317-272-7776
maryjack@indy.rr.com

Ida Parrot
2051 East Shaw Avenue
Fresno, CA 93710
559-288-4775
marian937@comcast.net

Nancy Rublaitus
2713 Everett Road
Ottawa, IL 61350
815-434-4943
mikeandnancy53@yahoo.com

Editor

Kat Thacker
311 West Drayton
Ferndale, MI 48220
248-545-0392
editor@royalbayreuth.org

Historian

Jerry and Harriet Lavine
7 Quail Run
Canton, MA 02021
781-821-1202
hljl1000@yahoo.com

Rare RB Figurals continued from cover

Toothpick Holders: Art Nouveau Lady, Pansy, Oyster & Pearl, Rose, Coachman. Overall not too many were made in figurals.

Chocolate Sets: Tomato, Oak Leaf, Pansy, Yellow Poppy. More versions of pots than cups & saucers found.



Wall Pockets: Oak Leaf (9"), Elk (9"), Art Nouveau Lady, Santa Vase, Crow Match, White Clown, Oyster & Pearl, Santa, Eagle, Chimps (inc. mirror versions that face each other).

Demi Cups & Saucers: Red Devil, Chrysanthemum, Morning Glory, Sunflower, Turnip, Radish, Corn, Daisy, Acorn, Sunflower, etc. Most of the Demis fall in the Rare category.

Miscellaneous Pieces: Girl in Gown Vase (6 1/2"BM), Miniature Tapestry Furniture, Baked Potato Dish, Elk



Syrup/lid, Incense Burners, Smallest Tomato Pitcher (Raines Book), Santa Claus Planter, Devil & Cards - Bridge Set (4 pc), Dutch Boy & Girl Spoon Rest, Clown Reamer, Cat Bank, Grape relish (10" white pearl), Rose Bowl (8") w/(9 1/2") Under plate, Ladies Purse Vase (10"), Cavalier Bust, Red Elephant Figurine, Devil & cards Big Bowl, Santa - Deep Candy Dish, Fox (Standing) Match Holder, Tomato Cruet, Crow Ashtray, Maple Leaf Bowl (9 1/2"), All Floral versions of Tea Strainers.

Do you have other unique pieces in your collections? Do you feel some of these items listed are not really RB? Let's talk about it. We are always looking for more information on this subject - so please continue to share any other ideas you might have with us on this area of RB collecting!

In addition to the more current information we got from Harold, another fine article can be found in back issues of our newsletter. I was alerted to this by our member Dotty Earle (so thanks Dotty!). The first three editions (vol 1, nos 1,2 & 3) from 1996 contain an excellent serialized article entitled *The Variety Of Royal Bayreuth* by Eric Sidman. This was originally printed in the New England Antique Journal in Dec 1986. Keep in mind a few of the specs in this particular article are now out-of-date, but it does give a good overview of rare figurals. You can find all three of these newsletters rerun on our Web site, in the member's only area. If you would like us to rerun the entire article in an upcoming printed version of the newsletter - please let us know!



President's Letter

by Sandy Heerhold

It seems that today is a good day to take the time to write my letter. It is a gloomy and rainy day in the Chicago area. This year has been very cold and very snowy. We are paying for the mild winters we have had as of late. I am so looking forward to the next six weeks or so to pass. This winter has been tough, double digit temperatures have been rare lately. Need to warm up these old bones!

We are currently hard at work on ideas for increasing club membership. For starters, all of those who have not done it yet, **NOW** is the time to send your renewal to Onita. Renewals are coming in slowly - to make Onita's job easier, please take the time to write your check and mail it to her soon. We have signed up 8 new members since our last newsletter. This is mainly due to several reasons. One is that Becky Conrad is continuing to bring in new membership (thanks a lot Becky!). The second reason is having an interesting RB Web site which is essential to having a successful club. Thanks to Gregg for his continuing expertise on maintaining our Web site. Another thought for those members who sell on eBay - To promote our club, an invitation to visit our Web site in your description would be very helpful - so be sure to include www.royal-bayreuth.org in your correspondence.

This year our convention will be revisiting the Columbus, Ohio area at the Embassy Suites in Dublin. Please mark your calendar for the dates of September

25 through the 27. Other than the city itself, it seems that we are duplicating last year's convention in Pittsburgh. The rate remains a reasonable \$105 a night. My experience at Embassies has continued to be very rewarding. They seem to go above and beyond in accommodating our needs. Our 2008 hospitality suite will be in the capable hands of Alvin and Roberta Cappel. Don't you wonder what they will be able to come up with for us this year?

As for future convention sites, I have been focusing on the Memphis area. Hopefully I will be able to have an acceptable contract in the near future. Any ideas out there for convention sites? Please let me know if you have suggestions.

We are also in need of articles for our newsletter. Any interesting thoughts, anecdotes, suggestions or stories would be appreciated. Please help us to make Kat's job easier. She has been diligent in working on our newsletter; however your help is needed, all submissions would be helpful.

Did you know, all RBCC members are entitled to submit a business card size ad to sell Royal Bayreuth? This would be a good time for you to check your collection for pieces that you would be willing to sell. Please continue to keep our upcoming club auction in mind if you have RB to sell. We need your help to make this popular annual event possible.

Classified Section

We wanted to remind our members that one of the perks included with their membership is they can place a free classified ad in the newsletter. The only requirements are that you are advertising something related to RB, and keep the information restricted to a business-card sized ad. We need these sent in at least two weeks before

the next issue goes to press - so check the newsletter due dates. You also can put in any requests for "spare parts" you might be needing for your RB. "Wanted" items you are searching for are also appropriate to send in for the newsletter. Please make sure to include your name and contact info along with these requests.

Treasurer's Report

by Harriet Land

Receipts 9/29/07 - 1/31/08

Membership Dues	\$750.00
Raffle	\$245.00
Convention Fees.	\$146.00
Auction	\$15,159.25
Plaques.	\$207.50
Balance from Previous	
Checking Account	\$12,615.57
Total Receipts	\$29,123.32

Disbursements 9/29/07 - 1/31/08

Auction	\$14,235.00
Newsletter	\$845.72
Misc.	\$62.52
Total Disbursements.	\$15,143.24
Total Receipts	\$29,123.32
Less Disbursements	\$15,143.24
Checkbook Balance	\$13,980.08

Health Update

by Chris Bartlett

Hi Royal Bayreuth friends, I just wanted all of you to know that I am doing extremely well. I had surgery - a lumpectomy and removal of lymph nodes - last Thursday and was only in the hospital overnight. Today we met with the breast surgeon and she had just received the pathology report which showed NO cancer in any of the lymph nodes or tissue that she had removed. She said she seldom sees a report as good as this one. So the 20 weeks of chemotherapy that I had been on since September proved to be very successful.

I will be on some different drug therapies now, as well as having radiation but I know that the worst is definitely behind me. We are thrilled with such a positive outcome. I will see you in Columbus!

Editor's Message

by Kat Thacker

Winter greetings to all our RB pals! So, here I am, in the middle of yet another snowstorm in Michigan, trying to come up with something clever to share with all of you. It has been such a dreary, cold season that it's truly hard to get motivated. I'm quite sure that is *why* none of our fellow members have gotten any interesting and educational articles off to me. I am now begging for you to come up with something for upcoming issues of our newsletter, or we shall have to resort to recipes and craft projects to fill our pages.

Gregg and I ventured out this past frigid weekend for an antique sale (in nearby Southfield), and in checking out the 85 or so dealers, happily found a bit of figural RB. Along with the usual few tomatoes and robins, we found an eagle ashtray priced at \$875, a nice red lobster water for \$1050, plus a grouping of pearly shell pieces. There were also grapes in several colors, and a pretty seahorse creamer. All the prices were on the high side throughout the show, but I did end up purchasing my first souvenir version of an elk creamer for a fair price, which was fun.

In being the curious (and nosey) people we are, I would like to start an ongoing column on how our members display their RBayreuth called *Our China Cabinets*. If you can provide us with clear photos of your collection in their cabinets (or wherever else you keep them), we will run them throughout the year. Please make sure the files are not too large - we would prefer if you can send these digitally, but regular printed pics are fine. (Just let me know if you want the originals returned). Another area it would be fun for you to share with everyone would be groupings of your specialties. Do you have 150 pieces of red poppy? Is one room in your home turned into a shrine to Old Ivory? Do you have every known version of the Polar Bear scenics? We want to see them! FYI - This is a good way to help contribute to our newsletter without having to actually WRITE anything! We're counting on you, so please don't let your fellow members down.

Huge RS Prussia Auction

We want to inform you of a **Huge RS Prussia Auction** coming up in April. You might be thinking, why would RBCC folks be excited to hear about this? In our experience, there always seems lots of "cross-pollination" between porcelain people - so here you go!

The auction is being held April 19 at Woody's Auction House. The 245 superb pieces listed are the fine collection of our friends and founding RBCC/RSPCC members Harold and Joeleen Passow. I talked to them to inquire what was behind their sale, and found out they are both (thankfully) healthy and doing fine. After a scare with storms and flooding in their hometown a few months back (more than 300 places flooded!), they decided to "thin out" the breakables in their six china cabinets. Joeleen told me packing up all that china under duress was a real nightmare! They have been collecting since 1976, and their RSP sale sounds chock-full of wonderful items. You can get more information about the sale by visiting www.woodyauction.com.

By the way - we are pleased to say they are hanging onto their collection of RB. The Passows are looking forward to seeing everyone in Columbus at the convention this year. Support our longtime RB friends and *enjoy* the sale!

Secretary's Message

by Onita Pierce

Hello to all. It is membership renewal time again. Thank you to everyone who has renewed their membership. To those of you who haven't: the dues remain \$30 for the year and are payable to RBCC. Please send them to me at:

Onita Pierce
205 Candlewick Loop
McCormick, SC 29835

To date, we have 45 renewals and 8 new members. I hope we all have a chance to meet at the convention this fall. Help us welcome to the following new members:

Donna Bryant

2262 NE Meadow Lane
Bend, OR 97701
Thebryants5@bendcable.com

Joseph and Marcia Cupurdija

9113 Rural Crosse Drive
Mechanicsville, VA 23116
Zivili@aol.com

Paul R. Day

210 West Armstrong Ave
Peoria, IL 61604
PaulRDay@aol.com

Joyce Kappel

1551 Larimer St #2901
Denver, CO 80202
JCK@viawest.net

Robert and Kathy Leipziger

1037 Pearview Drive
St. Peters, MO 63376
Kathyleipziger@earthlink.net

Lewis M. McFarland

444 W. 19th St Apt 1003
New York, NY 10011
NYCLEW@Yahoo.com

Nancy Nelson

(Jerry, Luke, Zack and Melena)
1201 8W Meadowlark Court
Rochester MN 55902
507-269-2829
Nancy@NelsonCompaniesInc.com

Deborah Shapiro

1 Northwood Commons Place
Chico, CA 95973
Dellencal@sbcglobal.net

Web Site News

by Gregg Thacker

Congratulations on the first anniversary of www.RoyalBayreuth.org! In the past year we have had over 6,400 unique visitors and more than 130,000 views. We still have good (and free) placement on Google and Yahoo when someone searches for Royal Bayreuth.

As a reminder, the User Name is still "rbclub" and the Password is "rbjoy1".

If you are selling RB, especially online, please let people know that you are a member of the Royal Bayreuth Collectors Club and feel free to link to the club's Web site to help increase club visibility.

Submission Deadlines

- May 10 for June Issue
- August 10 for September Issue
- November 10 for December Issue
- February 10 for March Issue

New Member Profile

by Mary McCaslin

Hello RB members, I had a pleasant telephone visit with one of our new members, a fine gentleman from Virginia, and want to share it with you all.

Joseph and Marcia Cupurdija live in Mechanicsville. Joseph told me that he has collected RB for about 40 years, most of which were figurals. He finally sold his collection and is now an Antique Dealer (probably now looking for RB).

He attended an auction in Winchester, Virginia. not long ago. The people there did not seem to know much about Royal Bayreuth, so he came away with a few good pieces including a Devil and Cards pitcher. The pearlized oyster shell has also been one of his favorites. After filling him in about our recent RB conventions, he hopes to be able to attend one in the future. Welcome Joseph and Marcia!



Auction Items Needed

by Bev Brumbaugh, Auction Chairman
Greetings to all of you from Minnesota, an Indian word meaning "don't put your tongue on a metal pipe". Bobby Jo and I have lived here long enough to develop an optimistic outlook regarding our weather. For example, if we did not have wind chill we would not have any double digit numbers to look at during the winter months. It is also hard to get a tornado going when the temp is -10f. Seriously, we are doing well and look forward to seeing all of you at this year's convention. Now it is time for an important message ...

The RBCC needs items for this year's auction. We have been exploring several leads that may produce results, but so far we have come up empty handed. If you have items that you are planning to place in the auction, or have any leads that I can contact, please let me know.

I am also taking this opportunity to ask your opinion regarding the holding of an auction this year. An auction is not required. In the past we have had excellent participation and it has been a major event during our convention. Please let me know how you feel about the auction: 'yes', 'no', or 'no opinion'. Thanks for your input.
e-mail: bbrumbaugh01@charter.net,
phone: (507)645-5382

Help Wanted!

We get loads of inquiries from our Web site about RB dinner china. Is there anyone in our club who can answer questions posed by these folks? It's always a good idea to help people when they take the time to inquire about RB – even if they don't ask about the "old stuff", they might become smitten once they have seen it, and go on to become new members! We truly need to be thinking about how to increase our membership whenever possible.

Food for Thought

by Chuck Heerhold

We have had several conventions over the past 12 years in many different settings, Royal Crowne Plaza, Marriot, Embassy Suites, and other hotel/motel type settings. It seems as though every time we leave an Embassy Suites, everybody wants to go back to that type of atmosphere. Every suite has a room where we can display pieces for sale, have discussions, entertain to some degree, and still have the privacy of their sleeping quarters. In addition, they have great made-to-order breakfasts from: cold cereal, sweet rolls, eggs any way, omelets, waffles, pancakes, bacon, sausages, coffee, tea, milk, and several juices ... all you care to eat. That does not include the Managers Reception at 5 'til 7 pm. These receptions include all drinks from soda pop to beer to mixed drinks as well as hot and cold hor d'oeuvres delivered table to table.

After spending four days and three nights in Pittsburgh Embassy Suites, we realized that we only paid for two meals during our stay. The first being a luncheon at "Pittsburgh's Famous Primanti Brothers Restaurant" and the second was the Royal Bayreuth Convention Banquet. After a quick review, I was wondering were the time went without eating twenty dollar lunches and fifty dollar dinners. I figured we saved \$40 on lunches (two days) and \$100 on dinners (two days), plus we had a breakfast worth at least \$10 each (three days) another \$60. Over all, that's \$200!

After, again, a lot of thought, I realized the difference in lost meals was a result of the free breakfasts, the Manager's Reception, in addition to a well planned hospitality suite by Joanne Lundquist and her crew. With the snacks, cold



meats and cheeses, and the various other things Joanne was able procure and scrounge up from members and the hotel, we were all kept very well fed.

If you're wondering what my point is, since we all loved the accommodations, all the amenities and the time to spend laughing and joking with our fellow collectors, we should try to make accommodations at Embassy Suites or a like site for all our future conventions, I have come to think, although room price is important, we have to look up what we are giving up for a cheap room. I would like the board of directors to consider not just room price, but what is the total cost to each member when selecting a convention site (meals, sleeping room privacy, meeting rooms, hospitality suites, etc). These should all be considered. My suggestion is we raise our sites a little and look for suites in the \$120 to \$130 range, since prices are going up all over we should understand if we want to be happy, we have to pay for it up front and look for the savings on the back end in food.

Just food for thought ...

Rare Sighting!

by A. Prilfooles



Fellow RBCC members, in a continuing quest for unique RB figural pieces, I have found what I think is a VERY RARE sugar and creamer. The tomatoes are identical in form/molding to the red

variety, but bright yellow in color! The most amazing thing however, were the location found and the price! I bought them at a fancy retail mall, in a rather chic boutique called Anthropologie. The best news of all - they were actually on sale - marked from \$24 per piece, down to \$9.99 (that's even cheap for RED tomatoes)! They were using the pieces, which are labeled dishwasher safe, mixed-up with other odd china in a beautiful, eclectic table setting using other antique-inspired items. They looked amazingly sophisticated and contemporary.

It was glaringly apparent on careful inspection, that the original RB items

were used for new molds. The yellow pieces were slightly larger and thicker than the originals, plus the fact that the color was obviously air-brushed on quickly, made the differences perfectly clear. As far as marks were concerned - "Made in China" was stamped on both. Oh well, so much for authenticity. In case you haven't caught on yet

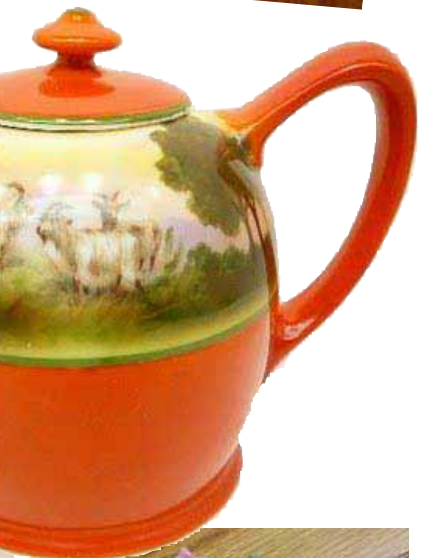
— April Fools!



Royal Bayreuth eBay Prices January 2008

by Judy Stockwell

Golf/Tennis/Sport Vase, 16" high.	\$639.00
Little Jack Horner Shoe with rhyme on one side, BM	\$515.99
Red Santa Creamer, BM, 4 1/4"	\$1,526.10
Cucumber Celery Dish, 12-1/2" long, BM	\$230.49
Equestrian Hatpin Holder, BM,	\$392.97
Teapot, Highland Goat, red with scene	\$153.61
Pansy Teacup and Saucer	\$238.49
Cat handled Creamer, Blue with white cat, BM	\$331.15
Oxalis Tea Strainer, pink, white, green	\$198.49
Portrait Lady Match Holder 3 3/4"	\$114.49
Guernsey Cow Milk Pitcher, 4 1/2" tall x 6 1/2" long	\$282.99
Clown Creamer, Green	\$365.00





Rare Monk Jug Found

by A. Jester

I found this 12" (RARE?) Blue Mark RB vase. I believe it is a one of a kind "Oh Brother T. Stag and Hound" piece. Could it possibly be a crematorium urn for some German Nobility? Or, because of it's unique color, perhaps an under-the-bed piss pot??? Anxious to know more. Can you help? Call Terry Anderson.



Our China Cabinets

The first in our on-going series include pictures from Richard Stockwell (devils) and Curtis Herr (lobsters & poppies) both from Pennsylvania. Thanks to Judy Stockwell for sending these in! I think you will agree that these are some amazing groupings. Please send photos of your own collections to Kat for inclusion in upcoming issues.

