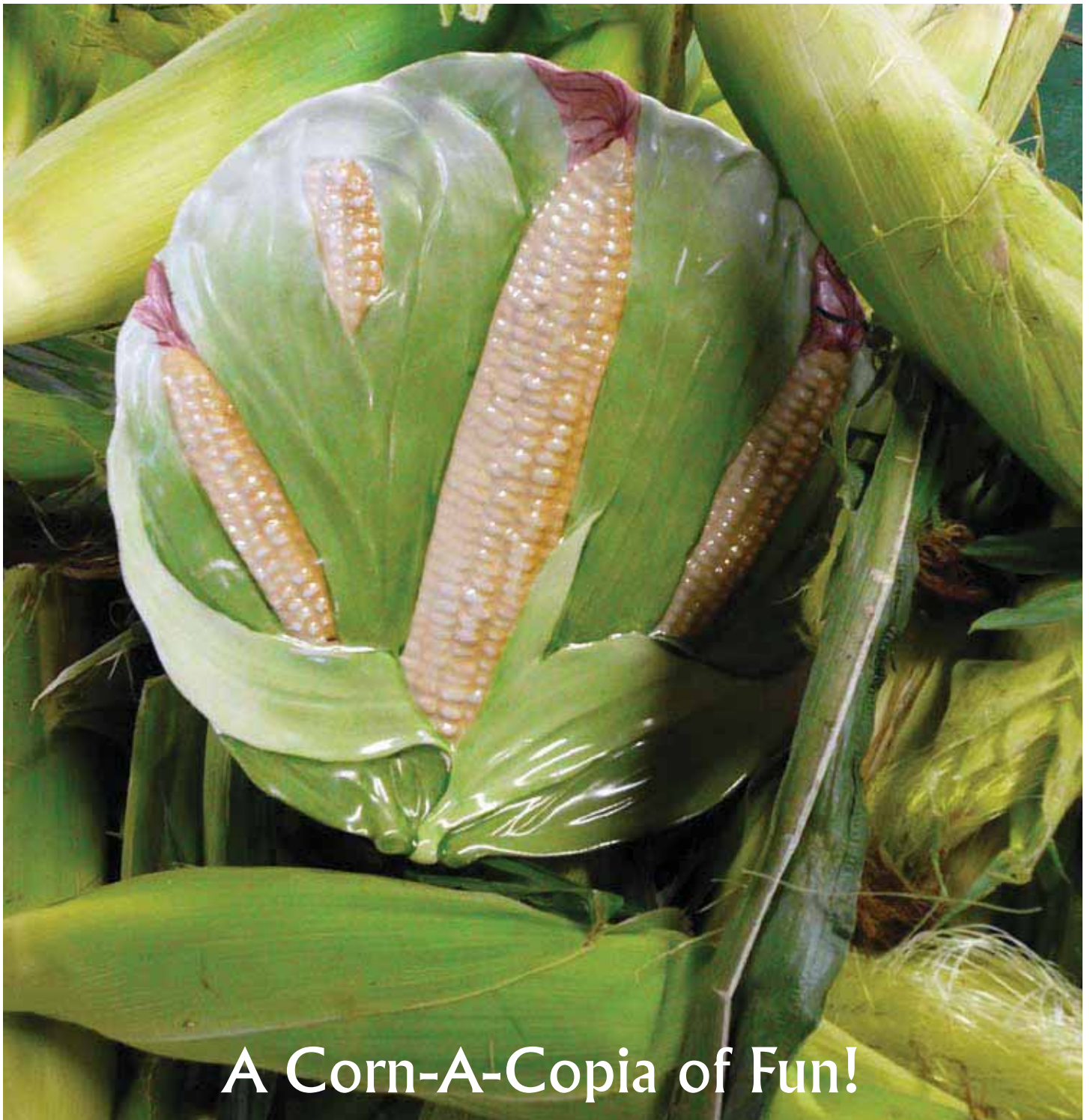




# ROYAL BAYREUTH COLLECTORS CLUB

VOLUME FIFTEEN ISSUE THREE

SEPTEMBER 2010



A Corn-A-Copia of Fun!

# ROYAL BAYREUTH COLLECTORS CLUB

[www.royalbayreuth.org](http://www.royalbayreuth.org)

## PRESIDENT

Sandy Heerhold  
808 Black Walnut Drive  
Sugar Grove, IL 60554  
630-466-7601

## VICE PRESIDENT

Terry Anderson  
1734 Telemark Drive  
Rockford, IL 61108  
815-397-4189

## TREASURER

Harriet Land  
1800 Country Club Road  
Senatobia, MS 38668  
662-560-9297

## SECRETARY

Chris Bartlett  
1320 Waterford Dr  
East Greenwich, RI 02818  
RBCCSEC@aol.com  
401-884-1695

## EXECUTIVE BOARD OF DIRECTORS

Bobby Jo Brumbaugh  
501 East Sumner Street  
Northfield, MN 55057  
507-645-5382

Alvin Cappel  
830 Laurel Avenue  
Ashland, OH 44805  
419-289-2493

Jim Carter  
7814 East Mackenzie Drive  
Scottsdale, AZ 85251  
480-423-9776

Bob Gollmar  
P.O. Box 337  
Rochester WI 53167  
262-534-2440

Nancy Rublaitus  
2713 Everett Road  
Ottawa, IL 61350  
815-434-4943

Judy Stockwell  
45 Concord Street  
Peterborough NH 03458  
603-924-3539

## EDITOR

Kat Thacker  
311 West Drayton  
Ferndale, MI 48220  
248-545-0392

## HISTORIAN

Roberta Cappel  
830 Laurel Avenue  
Ashland, OH 44805  
419-289-2493

## Secretary's Message

*By Chris Bartlett*

It's almost convention time in Peoria! Attendees will meet old and new friends, enjoy delicious food, and have the chance to see and buy some fabulous Royal Bayreuth and increase your knowledge of this wonderful porcelain. The auction will give everyone the chance to bid on a variety of items and you can also shop in members' rooms for that special piece. The hospitality room will be a hub for tasty snacks and good conversation, and the various programs and meetings will be very informative.

If you haven't done so yet, your registration information must be in the mail to me by September 27. For your convenience there is a registration form in this newsletter. Contact the hotel to make your room reservations. Most members like to arrive Thursday as we always have a social event planned that evening, Friday night is the auction and Saturday night is the banquet.

All renewals are in for 2010 and the total number of members is 124.

For your added convenience we will be collecting dues for 2011 at the convention. We are also offering a special two year membership for \$55, saving you \$5. There was some confusion this year as to whether people had paid, so if you don't pay at the convention a dues statement will be included in your December newsletter. Your prompt payment will be greatly appreciated.

Be sure to notify me of any changes of address, phone number, etc. If you have an e-mail address it is convenient to have it on file so we can send dues reminders or other club correspondence. Contact me at RBCCSEC@aol.com. Also my phone number which was printed in the Secretary Message in July's newsletter was incorrect. It is 401-884-1695.

So pack your bags and we'll see you in Peoria!



**Please remember: your membership expires December 31, 2010. Please pay your 2011 dues at the convention or mail to Chris by the new year – Thank you!**

## R.B.C.C. Treasurer's Report

*By Harriet Land*

**Checkbook Balance 06/30/10** ..... \$13,212.12

### Receipts

Membership Dues. .... \$60.00

Total Receipts ..... \$60.00

### Disbursements

Newsletter. .... \$-759.14

Roster Books ..... 422.00

Total Disbursements ..... \$-1,181.14

**Checkbook Balance 08/27/10** ..... \$12,090.98



# President's Letter

By Sandy Heerhold

Well fellow collectors, the convention is right around the corner. Have you made your reservations yet? Have you got anything to put in the auction? Is there anything you want to see or do at the convention?

Peoria, Illinois, in the early 1800s, was the whiskey capitol and thus became the largest corn consuming market in the world. It has a lot to offer in the way of history. It is also the headquarters of Caterpillar, once employing 40,000 people in the town.

The elegant Pere Marquette has been a fixture in Peoria since before prohibition days. As a matter of fact, we hear there may be some secret passageways that may have been used by some of Chicago's finest. I am hoping that you will consider joining us at the Pere Marquette October 7 - 10 for our annual event. You will need to call the hotel directly at 1-800-447-1676 to make your reservation.

I have reserved a trolley on October 9 to take the River City Historical Tour. This tour is also available on October 7 at 10:30 am. It is a 1 ½ hour tour and the trolley accommodates only 19 people. Should you want to go on Thursday, call 309-688-5668. If you would like to go on Saturday, please contact Chris Bartlett to reserve your seat, it will be on a first come basis. Cost of the tour is \$9, seniors over 65 are free. There is a \$1 surcharge which is a tip for the driver. Other places of interest would be Tanner's Apple Orchard, Luthy Botanical Garden, Wheels of Time Museum, and the Lakeview Museum (see phone numbers to the right).

The annual convention is an integral part of the Royal Bayreuth Collector's Club. We meet to show strange pieces of Royal Bayreuth, and



most importantly, renew old friendships and hopefully make new friends. This is our 16th year, and some of us who have been there from our club's inception are old friends. We have come a long way since our first meeting in Chicago in 1995.

For you convention goes this year please bring your 'special' piece of Royal Bayreuth, or, if you have an interesting Royal Bayreuth related story, we would like for you to share this with all of us. Also, please don't forget Show and Tell. Have you found an interesting item this year? We all would enjoy seeing your find. Have you found that special something for the Yankee Swap? It's time to begin searching for that interesting gift that everyone will want! The convention will be here before we know it.

In closing, this year (and for the past two years), I have been your President and I am very grateful for the help of all the board members and committees that worked to move the club forward. So many people have helped in so many ways; I cannot thank you all enough for your support. We will be electing a new President at this convention, and I will be passing the gavel on.

Good health and God bless!

## Peoria Points of Interest

Here are a few places you might like to visit while in Peoria...

- **Luthy Botanical Garden**  
309-686-3361
- **Peoria Historical Society**  
309-674-1921
- **Tanners Orchard**  
309-493-5442
- **Wheels of Time Museum**  
309-243-9020
- **Lakeview Museum**  
309-686-7000



*Current Exhibition  
John James Audubon*

## Website News

By Gregg Thacker

The website is once again approaching its peak season – convention time. We are updating the convention information and auction list regularly so check back often! We will also post photos from the convention and any presentation material possible after the convention for those that could not make it this year. We continue to send e-mail announcements periodically. If you are NOT receiving e-mail updates please send a note to [Editor@royalbayreuth.org](mailto:Editor@royalbayreuth.org) and we will add you to the list. Hope to see you in Peoria!

## Roster Corrections

**Cathy Gobbi** has a new e-mail: [cgobbi@hughes.net](mailto:cgobbi@hughes.net)

**Randall Robart** has an additional e-mail: [giornata@embarqmail.com](mailto:giornata@embarqmail.com)

**Phyllis and Michael Picklesimer's** name was misspelled in the Roster (our apologies).

## Newsletter Submission Deadlines

**November 10  
for December Issue**

**February 10  
for March Issue**

**May 10  
for June Issue**

**August 10  
for September Issue**

## Editor's Message

By Kat Thacker

Greetings to all our fellow members!

WOW! Hard to believe it's that time of year again... the RBCC convention is drawing near. Lots of last-minute details are being added to plans for our 2010 BIG EVENT in Peoria. We hope you're all planning on heading to the "corn belt" state of Illinois early next month. Just in case you hadn't heard, it's running October 7, 8, and 9 this time around.

Many club favorites will be returning by popular demand: the Show and Tell Session on Friday morning is always very interesting/educational (so don't forget to bring your rarest and best RB acquisitions to show off!) Our Auction Chair Steve Bartlett promises to have many RB treasures (both rare and new-collector level) available to our bidders at the much-anticipated Friday night event. Of course, we also have the closing Banquet (scheduled on Saturday night) with fun and festivities being held by Judy Stockwell and friends.

Terry Anderson will be sharing his experiences with "Wana-Bees" in his group-participatory program on Friday afternoon. Please bring your "RB lookalikes" to share in his open dialogue/discussion on unmarked "maybe Bayreuths" It promises to be very entertaining to all attendees.

Our Hospitality Chairpersons Joanne Lundquist and Paul Stratman are planning many goodies (and knowing them, surprises!) in our "CORN" Club Hospitality Room. This always seems to be THE place to sit, snack and visit with friends old and new. They are hosting a pie social on Thursday evening as an opening to the convention. A pizza and salad dinner will also be served just prior to the auction on Friday, so no one will be late for the start. You will also be able to pick up your registration packets here, as well as checking out any last-minute changes/additions to the convention schedule. Room-to-room visitation info can also be found here.

Our goal is for you, our members to enjoy every minute of this annual event. So please make sure to check out everything found in these pages for all the details. We wouldn't want you to miss a thing! See you in Peoria!

A special thanks to Terry & Mary Anderson, and Sandy & Chuck Heerhold for "answering the CORNY call" I sent out in the last newsletter. We're showcasing their beautiful (and creative) pics from their corn collections throughout this issue. Thanks also to Cathy Gobbi for sharing her photos/info appearing in "Our China Cabinets" and "My Favorite RB".

Big Thanks to Woody Auction... Jason Woody has generously loaned the use of their mailing list for us to send out an "invitation to join the RBCC". It hit over 400 fresh mailboxes last week - so we're hoping some new members will be enticed before the convention. We really appreciate Woody's support of the RBCC!



# 2010 Convention Agenda

*By Sandy Heerhold*

## Thursday, October 7

- 1 – 2 pm Registration
- 1 – 2 pm Auction Pieces submitted for Inspection
- 3 pm RBCC Annual Board Meeting
- 6:30 – 7 pm Registration
- 7 pm Pie Social

## Friday, October 8

- 9:30 am Welcome Meeting and Show & Tell
- 2 pm Wana-bees Program
- 3:30 pm Room To Room Visitation; Move Auction Pieces
- 5 pm Pizza and Salad in the Hospitality Room
- 6:30 pm Auction Registration
- 7 pm Club Auction

## Saturday, October 9

- 9 am Annual Business Meeting
- 12:30 pm Meet for River City Historical Tour
- 3 pm Program
- 7 pm Banquet with Entertainment
- 9 pm Board Meeting

# Peoria Programs

*By Terry Anderson*

We would like to request that our members who are attending the convention in Peoria bring at least one example of something that tries to be Royal Bayreuth.

The program we will put on will be something like “Phonies Play In Peoria.” We intend to show RB “wana-bees”, “nare-do-wells”, and “look-a-likes.” An example is a miniature puzzle jug marked RB (I do not have one) so bring yours. I have them by other companies and will bring those. Miniature covered cheese keepers are another item and many other miniatures are crossovers too.

Creamers, pitchers, and vases in figurals were also abundant by other manufacturers such as Schafer & Vater. Some strawberries and lobsters are often suspect to RB collectors. How about miniature shoes? Nippon and R. S. Prussia have similar pieces.

I think you get the idea. This presents a good opportunity to bring items you have, but are unsure of them truly being RB. It can offer our new and old members a chance to interact on recognizing RB and the look-a-likes. We will discuss the feel, heft, decals, paint/glaze, and other things that make a piece RB.

In some cases I will bring the RB piece and the copy. If you bring just one piece each, and along with mine, we should have a program that rivals the ever popular “Show and Tell” segment of the conventions.

# Hospitality Room News

*By Joanne Lundquist and Paul Stratman*

Well everyone, here we are. Another year has passed and it is Convention Time. We look forward to seeing everyone soon in Peoria.

Once again this year we will be having our popular Pie Social to welcome everyone. It will be held on Thursday Night at 7:00 p.m., so don't miss it.

Registration sign-in and goody bag distribution will begin about 3:00 p.m. on Thursday when the Hospitality Room officially opens. From then through Saturday at 4:00 p.m. it will pretty much remain open (except during meetings). We would love to try and have it open during most of the event, and figure that it will be possible to do so with the help of a few more volunteers. Because there are quite a few local folks who aren't staying in the hotel, we'd like to keep it open for them to have a place to hang out!

Friday night we will be having pizza and salad starting at 5:00, immediately before the club auction. FYI: If any of you have not checked out the auction pieces online, please do. Steve has done a great job of getting some really great pieces.

As I have mentioned many times before, homemade goodies are ALWAYS welcome as everyone loves those the best (hear me Bob Golmar)! Since Paul and I will be on the road we will obviously not be baking en route (or in our rooms) so anything all of you can bring/do to help would be greatly appreciated!

We look forward to seeing all of you. Don't forget your gift for the Yankee swap.



## Convention Yankee Swap Reminder

By Judy Stockwell

I hope that all of you convention goers have been looking for that special Yankee Swap item. Remember the value should be \$10-15 and it should be something good for either a man or woman. Bring something exciting, different, old or new! Remember there will be prizes and a Poker Run as well - fun for everyone!

I look forward to seeing you all at the Convention in Peoria. Any questions, please e-mail me at buckhill1@comcast.net or call 603-924-3539.

## Some Corn Math

By A. W. Shucks

- An ear of corn averages 800 kernels in 16 rows.
- A pound of corn consists of approximately 1,300 kernels.
- 100 bushels of corn produces approximately 7,280,000 kernels.
- Each year, a single U.S. farmer provides food and fiber for 129 people - 97 in the U.S. and 32 overseas.
- In the U.S., corn production measures more than 2 times that of any other crop.
- Over 55% of Iowa's corn goes to foreign markets. The rest is used in other parts of the United States.
- Iowa, Illinois, Nebraska and Minnesota account for over 50 percent of the corn grown in the U.S.
- The "Corn Belt" includes the states Iowa, Illinois, Nebraska, Minnesota, Indiana, Ohio, Wisconsin, South Dakota, Michigan, Missouri, Kansas and Kentucky.
- Corn is produced on every continent of the world with the exception of Antarctica.

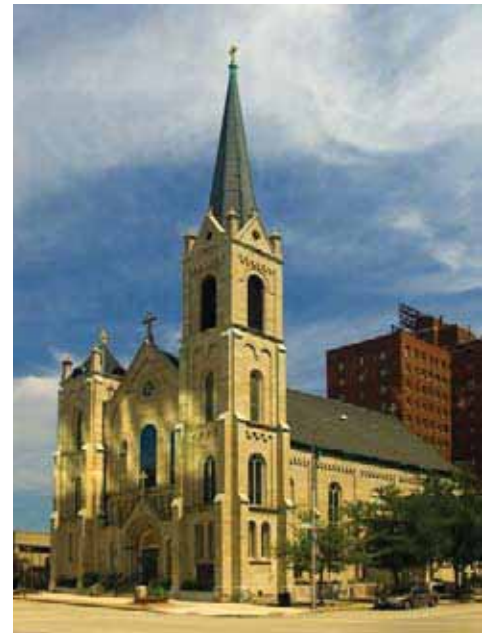
## Welcome to Peoria

By Paul R. Day

*Editor's note: Paul calls Peoria his home, and has kindly written up this info on his hometown for us. We'll look forward to saying "hello"!*

The Pere Marquette is well situated in downtown Peoria. It is only about 6 blocks or so from the Illinois River. The last street parallel to the river is Water Street. On Water the Illinois Antique Center can be found; a single floor mall with good quality dealers. In the same historic building is the Contemporary Arts Center, a great gallery and fine arts center. This was founded by renowned artist Preston Jackson (formerly of the Chicago Art Institute). Preston has donated several public sculptures along the riverfront (and a wonderful newly dedicated one at the Civic Center - one block from Pere) commemorating the Underground Railroad. Below the CAC is the Rhythm Kitchen, a great restaurant with friendly staff and nightly live music. For those so inclined, the Paradise Riverboat Casino is across the river in East Peoria.

- Immediately west of the Pere is the newly restored Sacred Heart Church, and then historic Peoria City Hall, both of which are open daily for touring. Peoria is full of beautiful historic buildings.
- For those driving, there is a large mall (200 dealers) in East Peoria that is in an old school building (Pleasant Hill Mall). Grandview Drive in Peoria Heights was declared by Teddy Roosevelt to be "the world's most beautiful drive", and it retains that nickname today, providing great vistas of the Illinois River Valley.
- Peoria Heights is enjoying a renaissance as a center for fine dining and outdoor entertainment (Prospect Avenue runs north/south in Peoria and Peoria Heights.) June Restaurant is located here and was ranked as a top 50 best new US restaurant by Travel and Leisure magazine.



Sacred Heart Church



*A daytime walk along the riverfront is a lovely experience.*

# Welcome to Peoria's Pere Marquette

By Amanda Hahn

On behalf of the Hotel Pere Marquette, I can't tell you how excited we are to have the Royal Bayreuth Collectors Club in Peoria, Illinois for the 2010 Convention. There is a block of rooms held for the Royal Bayreuth Collectors Club at a rate of \$112 single/double (13% tax). All the rooms come with the following amenities:

- Complimentary full breakfast buffet served daily
- Room Service from 6 am – 10 pm daily
- On-Site Fitness Center
- Access to the RiverPlex Health & Wellness Center
- Three complimentary on-site Business Centers each with computer/fax/printer
- Complimentary Parking for all overnight guests
- Complimentary High Speed Internet Access and wi-fi in all Guestrooms and Meeting Space
- Complimentary Shuttle Service to and from the Greater Peoria Regional Airport

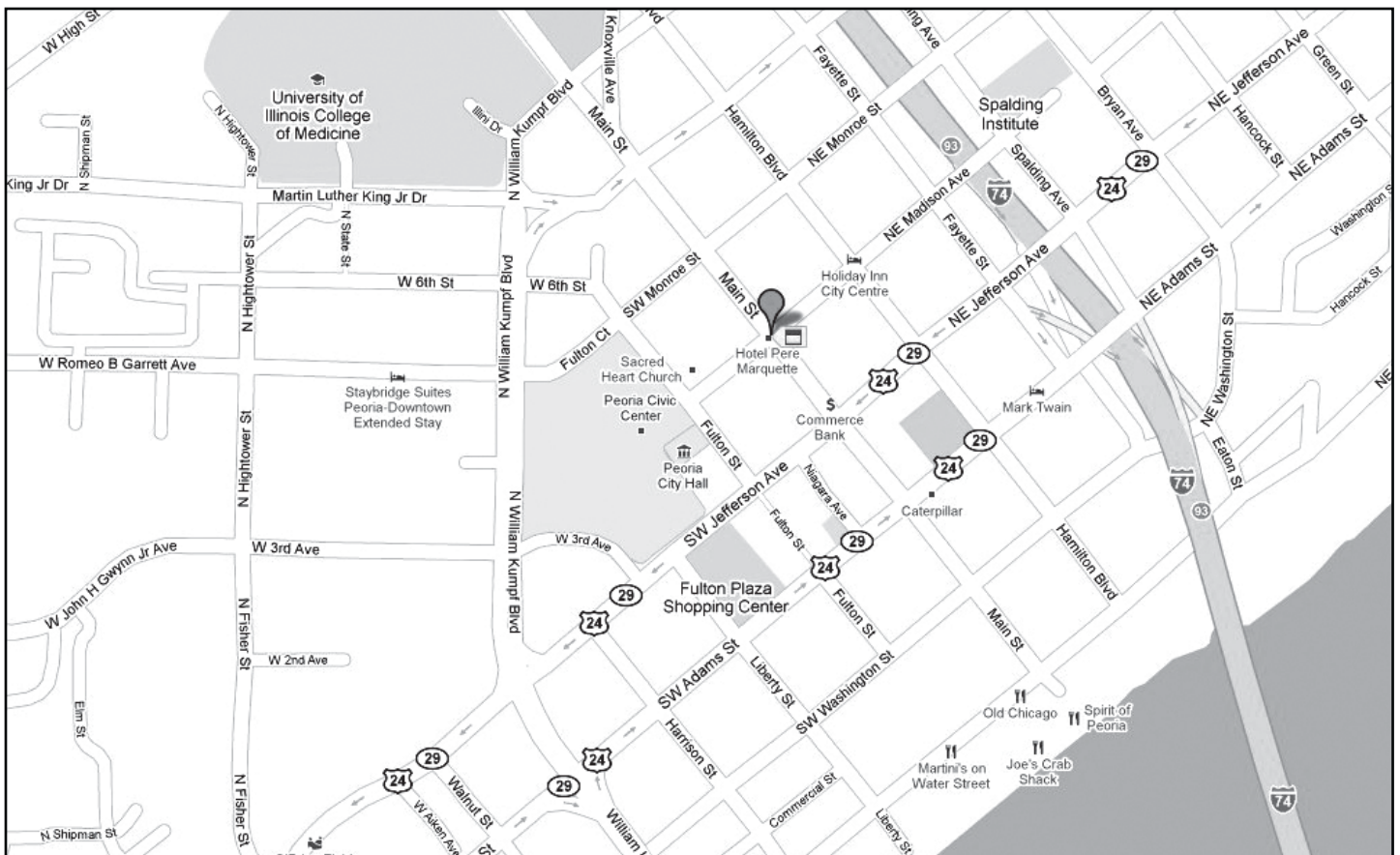
Guests may call our local number (309-637-6500) or our toll free number (800-447-1676) to make a reservation. When calling to make the reservation please ask for the Royal Bayreuth room block.

Hotel Pere Marquette  
501 Main Street  
Peoria, IL 61602  
[www.hotelperemarquette.com](http://www.hotelperemarquette.com)

# Historical Peoria

By Sandy Heerhold

Peoria's cultural history is infamous for its role in entertainment in the late 1800s and early 1900s. The city had a diverse variety of people due to the different immigrants who had settled here. Because of the eclectic tastes from different cultures, new shows would play in Peoria before they tried to make it big on Broadway. If the people of this town liked the show, it was considered to have a good chance at success; However, if it flopped, it was back to the drawing board. Thus came the phrase: "If it plays in Peoria, it'll play anywhere."





## From the Auction Chair

By Steve Bartlett

With almost a month left until the convention in Peoria, IL, the club currently has firm commitments for more than 130 pieces of Royal Bayreuth for Friday's auction. I believe we have some fine pieces with a good variety and mix. I'm fairly optimistic that we will have an auction numbering in the 130-150 range. We will consider adding more pieces at this point only if they are unusual and/or rare. If you want to consign pieces, please contact me ASAP at [dufferdog@aol.com](mailto:dufferdog@aol.com).

Hopefully, you have taken a few moments to view pictures of the auction items on our club web site. ([www.royalbayreuth.org](http://www.royalbayreuth.org)).

The Board of Directors and the Auction Committee are working diligently on ways to increase participation at the convention and the auction. In the end, a successful auction depends on each of you participating, bidding and buying. Remember, absentee bids will only be accepted if they are submitted to me prior to the auction.

I will not be available after Thursday, September 30 until the convention begins in Peoria. See you there.



## Auction List

Be sure to check our website for color photos and the latest information. Order and listing subject to change prior to the auction.

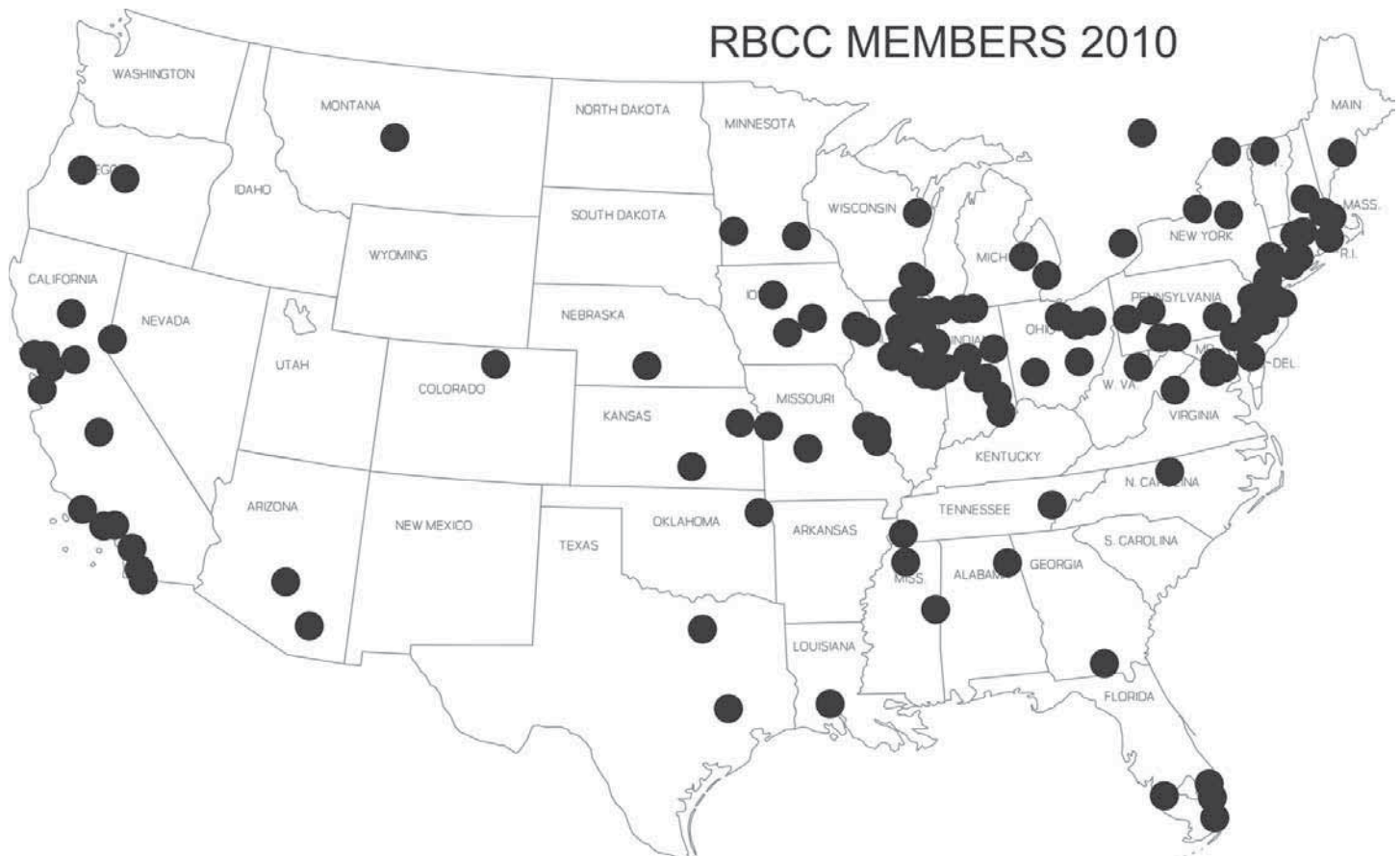
1. Parrot Creamer 3 1/2" Green/Yellow
2. Fisherman Creamer 4"
3. Poppy Water (Red) 6"
4. Ladies Dress Shoe Cobalt Blue
5. Alligator Creamer 3 1/2"
6. Santa Rare BROWN Pin Tray
7. Tomato Mustard 3 1/4"
8. Devil and Cards - Salt and Pepper
9. Eagle Milk 4 3/4"
10. Water Buffalo (Black and Red) 3 3/4"
11. Small Vase Pheasant
12. Perch Creamer
13. Salt Shaker Red Pepper
14. Rooster Creamer 4 1/2" Black/Green
15. Conch Shell Boot Creamer 4 1/2"
16. Peering Lady Pitcher 5 1/2"
17. Strawberry Milk
18. Yellow/White Mug with Children UM
19. Devil and Cards - Milk Pitcher
20. Shell Water Pitcher 5 1/2"
21. Clown Candle
22. Ducks Set of Three (Creamer Milk Water)
23. Milk Pitcher with Sheep (Red/Green) 4 1/4"
24. Tapestry Basket
25. Grape Creamer and Sugar (Yellow) 3 3/4"
26. Fishermen Milk 5 1/4"
27. Top Hat - Goat Scene
28. Red Hot Chili Pepper Shaker Set
29. Lemon Creamer 3 3/4"
30. Shell Creamer 4 5/8" (Seahorse Handle)
31. Nursery Rhyme Candle Holder
32. Strawberry Cream and Sugar Set
33. Polar Bear Creamer
34. Poppy Open Compote (red) 3 1/2" x 5 3/4"
35. Devil and Cards - Wall Match Holder
36. Maple Leaf Milk 4 1/2"
37. Apples Condiment
38. Tomato (Three Piece Set)
39. Tettau S/P Shakers
40. Clown Milk (Red) 4 1/2"
41. Lobster Bowl/Candy Dish, Nipped End
42. Eagle Candlestick
43. Pansy Creamer, Green Mark
44. Fisherman Short Vase 1 3/4"
45. Coachman Creamer.
46. Demi Cup and Saucer
47. Devil and Cards Water 7 1/2"
48. Lobster Sugar (Covered) 3 3/4"
49. Poppy Creamer (Red) 3 3/4"
50. Elk Toothpick
51. Shell Divided Dish 9" x 11"
52. Tettau Funnel with Handle 4 1/2"
53. Rooster Creamer (White) 4 1/2"
54. Clown Ash Tray (Red)
55. Tapestry Creamer 3 1/4"
56. Devil and Cards Creamer 3 3/4"
57. Rooster String Holder 6 1/2"
58. Fisherman Water 6"
59. Oyster and Pearl Demi Saucer
60. Kewpie
61. Devil and Cards - Card Tray
62. Pelican Water
63. Duck Milk
64. Orange Creamer 4 1/2"
65. Elk Beer Stein 6"
66. Mountain Goat Creamer 3 1/2"
67. Ashtray Lady in the Lavender Hat
68. Poppy (Apricot) Bowl with Lid 3 1/2" x 4"
69. Crow Creamer (Brown Bill) 4 3/4"
70. Pear Creamer
71. Conch Shell Mustard 3 1/2"
72. Tomato Creamer 3 3/4" (RB?)
73. Devil and Cards - Sugar with Lid
74. Fruit Bowl (Cherries) 7 1/2"
75. Green Leaf Handle Plate w/Pink Flowers
76. Maple Leaf Creamer 3 1/4"
77. Turtle Creamer
78. Sunflower Creamer
79. Sea Shell Boot Milk 5 1/4"
80. Platypus Creamer
81. Tettau Mustard with Spoon
82. Coral Shell Water Pitcher 6 1/4"
83. Pot with Handle/Spout Green and Gold
84. Elk Humidor
85. Shell Bowl 9"
86. Oak Leaf Creamer 4"



- |  |  |   |
|--|--|---|
| 87. Grape Salt & Pepper - White Satin          | 106. Fisherman Vase 4"                     | 125. Poppy (Pink) Gravy Bowl with Ladle     |
| 88. Tall Clown Candle Holder                   | 107. Devil and Cards – Water Pitcher       | 126. Apple Mustard 3 5/8"                   |
| 89. Devil and Cards - Candy Dish               | 108. Monkey Milk                           | 127. Candle Lady Pitcher 8 1/4"             |
| 90. Labrador Retriever Creamer 3 1/4"          | 109. Shell Wall Match                      | 128. Devil Creamer (Red) 4"                 |
| 91. Apple Water 6"                             | 110. Radish Salt and Pepper                | 129. Frog Creamer 2 1/2"                    |
| 92. Water Buffalo (Black and Red) 3 3/4"       | 111. Cat Creamer 5" (Black)                | 130. Radish Plate 4"                        |
| 93. Fisherman Toothpick - Rare - 4 Prong       | 112. Rose Covered Sugar 2" x 4 1/2"        | 131. Fox/Wolf Creamer/Stirrup Cup 4"        |
| 94. Tettau Demi Cup and Saucer                 | 113. Oak Leaf Creamer 4"                   | 132. Grape Shakers – Purple                 |
| 95. Salt Poppy White Satin                     | 114. Oyster Creamer 3"                     | 133. Devil and Cards Mug                    |
| 96. Clown Candle Holder 3 3/4" x 5 3/4"        | 115. Strawberry Water                      | Limited edition #275 of 2000.               |
| 97. Farmer and Child Creamer 2 3/4"            | 116. Fishermen Toothpick - Rare - 3 Prong  | 134. Water Buffalo Creamer 3 3/4"           |
| 98. Owl Creamer 4"                             | 117. Poppy Creamer 3 3/4" Lavender         | (White Bisque)                              |
| 99. Sailboat Vase (Skiff with Sail) 10"        | 118. Milkmaid Creamer (Red Dress)          | 135. Old Man in the Mountain Creamer 3 3/4" |
| 100. Bear Creamer (Black/White Mottled) 4 1/2" | 119. Pansy Demi with Gold 1 1/2"           | 136. Eagle Milk                             |
| 101. Tettau Creamer                            | 120. Robin Creamer 4"                      | 137. Open Winged Butterfly Creamer 3 3/4"   |
| 102. Fisherman Toothpick                       | 121. Duck Creamer 4"                       | 138. Nut Bowl Set (Green) Master and 5      |
| 103. Lamplighter Milk 4 1/2"                   | 122. Shield Back Candle Holder Snow Babies | Individuals                                 |
| 104. Watermelon Milk                           | 123. Lobster Creamer 3 3/4"                | 139. Apple Lemonade 7"                      |
| 105. Clown Creamer (Red) 3 3/4"                | 124. Oak Milk Pitcher 4 3/4"               | 140. Fox Hunt Scene Mini Cheese             |

## Membership Map

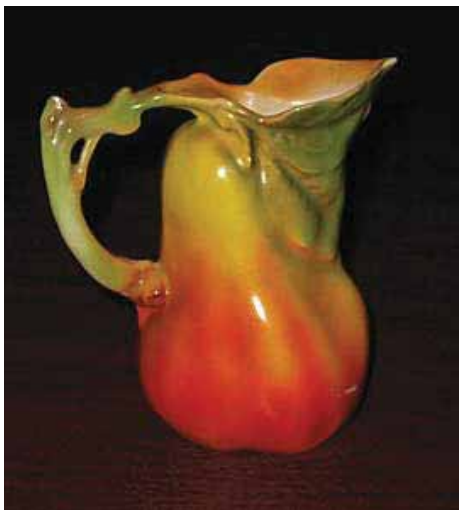
Below is the latest map showing our member's locations. Unfortunately including our friends in Australia & New Zealand would require a foldout map, so could not be shown here.



# Royal Bayreuth eBay Prices from July 2010

By Judy Stockwell

Santa Candle Holder 7 ½" tall Deponiert Brown	.....\$3,500.00
Royal Bayreuth Turnip Salt Registered Musterschutz	..... 180.00
Polar Bear Creamer 4" tall BM	..... 255.00
Porcelain High Shoe, Brown Pg 45 Anne W. Book	..... 50.00
Colonial Couple Toothpick Holder, Coal Hod Shape UM	..... 80.00
Pear Creamer, Star Mark 4 ¼"x4" .....	99.00
Set of 6 Tomato & Lettuce Plates 3 ¾" x 7 ½" BM.....	145.00





# My Favorite RB

By Cathy Gobbi

I just got a digital camera and thought I would send these photos of my favorite RB creamer. He is dressed in the style of the year 1794 and holding a scroll in his hand. If the scroll represents the King's charter this could be a commemorative piece celebrating Royal Bayreuth's centennial. The color of the messenger's tricolor hat is Prussian Blue. As we know, the privilege for the factory was granted by Friedrich Wilhelm II, King of Prussia and Emperor of Germany.

There is a handle just as on the other "people" creamers. He isn't marked but definitely has the look and feel (and height 4 1/4") of the RB creamers. He sits in the cabinet next to the coachman, bellringer, and lamplighter, and they look like a series. I like to think of this fellow as the "King's messenger", carrying the 1794 royal decree granting the privilege to use the term "Royal" in



describing their product (as stated in Mary McCaslin's book).

I came across this creamer at the annual antique fair at our Veterans Building. Unfortunately, the out-of-town-sellers were unable to remember where they acquired him. I was intrigued by his costume so I went to a bookstore and bought a book about period clothing. The hat helps fix the



date, as tri-corner hats were in fashion in the 1700s and kept getting bigger and bigger until about 1800. After 1800 the influence of the American and French revolutions brought about a big change in men's clothing and they went to tailored suits and top hats. The enormous hat on this character indicates that he was a very important person.



1320 Waterford Dr  
 East Greenwich, RI 02818

## Our China Cabinets

*By Cathy Gobbi*

My fish and lobsters have a shelf of their own. At the top is a cracker tray with fishermen. Maybe they are really lobstermen...



## Schwartz Tapestry Auction

*Photos by Nancy Rublaitus*

The Richard Schwartz Collection including more than 700 pieces of RB Tapestry was auctioned off in November 2009/March of this year. Both sales were held by Mickey Reichel Auctioneer in Boonesville MO. Here is just a small sampling of the amazing collection (many of which were featured in Mary McCaslin's first book).

