



ROYAL BAYREUTH COLLECTORS CLUB

VOLUME TWENTY TWO ISSUE ONE

March 2017



Red Hot RB!

ROYAL BAYREUTH COLLECTORS CLUB

www.royalbayreuth.org

PRESIDENT

Wib Beachy
251 Hickory Hollow Road
Somerset PA 15501
814-443-2796

VICE PRESIDENT

Paul Stratman
7814 East Mackenzie Drive
Scottsdale AZ 85251
602-499-3234

TREASURER

Carolyn Church
110 Blackwood Street
Beaver Falls, PA 15010
724-846-4526
jkc110@comcast.net

SECRETARY

Karen Church
110 Blackwood Street
Beaver Falls, PA 15010
724-846-4526
jkc110@comcast.net

EXECUTIVE BOARD OF DIRECTORS

Judy Breece
2809 Alderman Court
Greensboro NC 27408
336-299-0279

Jim Carter
7814 East Mackenzie Drive
Scottsdale AZ 85251
602-499-3234

Sandy Heerhold
808 Black Walnut Drive
Sugar Grove IL 60554
630-466-7601

Bob Mazza
111 South Compo Road
Westport CT 06880
203-981-0920

Karen Rublaitus
48 Jerry Circle
Atoka TN 38004
901 483-5320

Deborah Shapiro
1 Northwood Commons Place
Chico CA 95973
530-894-3024

EDITOR

Kat Thacker
311 West Drayton
Ferndale MI 48220
editor@royalbayreuth.org
248-545-0392

HISTORIAN

Nancy Rublaitus
2713 Everett Road
Ottawa IL 61350
815-434-4943
mikeandnancy53@yahoo.com

Water Brothers

By Jim Lapp



A year or so ago there was an estate sale in the Allentown Pennsylvania area and a couple who are antique dealers were able to purchase a large RB collection. There were several varieties - including my main pursuit, the devil and cards line.

Some of this group they listed on eBay, most notably some rare creamers. Most of what was eventually presented in the devil or D&C group at an Allentown antique co-op was of no interest (since I had all that was offered) but there was one day something unusual caught my eye.

It was a devil and cards water of which, as it happens, I have several but this was, as you see, a completely different mold. Here the bottom is more along the lines of the known humidior base, squared off rather than rounded as is the norm for the standard piece. Also, as with a D&C creamer I have presented as a possible alternative mold, the spout is formed by the two outer cards rather than the second tier cards as is usual.

After a quick inspection I asked if I could talk to the vender and did to ask for a better price, as it was offered priced well above today's market. I made a reasonable counter offer but, no dice, he would not be moved. This



piece is not marked and so adds to speculation of origin, I walked away.

Many months later we were again in the co-op and I saw the price had been reduced close to my offer. I asked for the usual 10% discount and there it was. I am now pleased to have yet another curiosity to ponder. I can't say that this is a verified Royal Bayreuth production but I am willing to entertain the possibility given the dedication of the original collector and the idea that there was at the time no reasonable gain in mimicking the RB production. Good hunting my friends!

From Our President

By Wib Beachy

Happy Spring to all! I always enjoy it when the groundhog gets it wrong. If the next two weeks are anything like the last four weeks, I'll take his version of "winter" any time. As I mentioned in the last newsletter, this year's Convention will be at the Embassy Suites (1801 Newtown Pike, Lexington Kentucky 40511) from Thursday, September 7 through Saturday, September 9. The direct phone number to the hotel is 859-455-5000. Please make your reservations well in advance of the cut-off date of August 17, 2017. When reserving your room, be clear in stating what date you will be arriving and what date you will be leaving to return home. I want to avoid any confusion whatsoever in the period of time covered by your reservation. The Club rate is \$135 per night.

I have made the necessary contacts

in arranging the two excursions planned during the Convention. On Friday afternoon, there will be a members-only tour of the All-Tech Brewery and Distillery. I have been told that the tour is memorable for its SunDowner drink at the end by another member whose identity I will not disclose. Suffice it to say that a generous sampling of the drink will ensure the Convention will be a success regardless of what else may happen!

On Saturday, there will be a trip to an area horse farm through Horse Country Tours. I can think of no better pairing than horses with bourbon for Kentucky. Having only traveled through the area in the past, I'm looking forward to actually stopping and enjoying the famous "blue grass" unique to it.

Friday night will again feature the

Club Auction. If you have any pieces to consign to it, please let Jim Lapp and Susan Szymanski (our Auction Chairs) know as soon as possible at jimlapp@hotmail.com. This year's rules for the Auction may include a premium to be charged on pieces sold as well as a handling fee for pieces not sold. The Executive Board is considering these changes, which will be announced if and when they are approved.

Because of feedback I've received, we will try to have presentations by members and others on the agenda as well. If you would like to be involved in a presentation, please contact me by email at Beachyispeachy@yahoo.com. Thank Daughter Dearest for that catchy address which I honestly can't forget - try as I might (and believe me, I've tried)!

Editor's Message

By Kat Thacker

Well, it's finally OFFICIALLY spring, so hurray!!!

Our first newsletter of 2017 was inspired by the wonderful trio of new articles sent in by longtime contributor Jim Lapp. He's sharing some wonderful personal finds of unusual Devil and Card RB. And since we had done a "GREEN" cover back in March 2011, it seemed like a good idea to make this our RED issue. It's chockfull of D&C and Red Devil info for your edification. Many thanks to Jim for his continuing research into all things devilish! Thanks also to Harold Brandenburg for his past article we've rerun with this theme.

And mentioning Jim Lapp, were you aware that he and Susan Szymanski are our Chairs for the BIG club auction in September? They are on the lookout for those great pieces you might be willing to part with. Are

your china cabs currently overrun by clowns? Too many frogs or owls habitating your bookcase shelves? Tabletops overrun by porcelain mice? Our club auction can fix that for you!!! Check out your collections, and make that list now of pieces you want to include in the sale!

This issue contains our latest version of the club roster. We do our absolute best to keep up with everyone's personal info...but at times we miss something. Please take a moment to check your stats out now, and let Karen Church or I know if anything has changed. And do be sure to keep your new roster in a handy place. They sure are helpful when you need to contact a fellow club member or look up the bylaws, or try and remember WHERE the club convention was back in 1999!

And I'm going to close with

my perpetual plea to you, our membership. It's becoming harder to get good articles, photos or news for inclusion in our newsletters every time. It would be wonderful if you could send in something interesting you've come across while hunting for our fave porcelain. This club exists to come together and share our knowledge and passion for this truly unique stuff we all collect!

Newsletter Submission Deadlines

- May 10 for June Issue
- August 1 for September Issue
- November 10 for December Issue
- February 10 for March Issue

Website News

By Gregg Thacker

Happy Spring RB fans! I hope you spent the short Winter viewing the hundreds of 2016 convention images and other resources on our website. As usual each March (coordinated with membership renewal and publication of the roster) we reset the user name and password required to access member data on our website. Please make a note of that for future reference.

As a reminder, if you are NOT receiving e-mail updates please send a note to editor@royalbayreuth.org and we will add you to the list. Happy hunting at all the spring shows!

New Members

Two new members have joined our club since the last newsletter - welcome to our newest members!

Mary Pat Ohms

6317 West 83rd Street
Burbank, Illinois 60459
708-598-1216

Franklin B Morse Jr

4315 Coachman Circle
Westlake Village, CA 91362
805-371-4015
fishsaver@mac.com

Get Well

By Kat Thacker

We have several club members dealing with health issues at this time...

Terry Anderson has been hospitalized several times over the last few months with multiple complications from infections, bad reaction to meds, loads of tests and just a few weeks ago, pulmonary embolisms. He had surgery to implant a filter near his heart. After seven more days in the hospital, he's thankfully back home recovering under the watchful eye of Mary!

Harold Brandenburg was recently hospitalized to be treated for Guillain Barre Syndrome. He was diagnosed after developing numbness and tingling in his lower extremities. It became impossible for him to use his legs & feet for a while. His doctors are pleased with his progress, and he has now moved into a rehab facility near to their home. Nancy visits daily,

and is thankful he didn't have his respiratory system compromised by this neurological disorder.

Our past club secretary Chris Bartlett had a nasty tumble while hiking a lava trail on vacation in Hawaii. She suffered a broken right wrist that required surgery. She and Steve were there celebrating their 50th wedding anniversary. Steve has had to take over lots of household duties of course. So they're now sharing with everyone "the first 50 years of our marriage were great but day 1 of year 51 was rocky!" They look forward to seeing everyone at our convention in Kentucky this fall.

Sending our get well thoughts and prayers to them and all our members and their families suffering health challenges at this time. Feel better soon everyone...

RBCC Quarterly Treasurer's Report

By Carolyn Church

11/11/2016 - 2/10/2017

Checkbook Balance as of 11/10/2016: \$12,272.47

RECEIPTS

Membership Dues 2,275.00
Total Receipts (11/11/2016 – 2/10/2017) \$2,275.00

DISBURSEMENTS

Newsletter printing and postage (Images in Ink) 546.22
Total Disbursements (11/11/2016 – 2/10/2017) \$546.33
Checkbook Closing Balance as of 2/10/2017 \$14,001.25

2016 Convention Hospitality Update

By Karen Rublaitus

Please accept my sincerest apologies for missing the last newsletter deadline....

The hospitality room was quite a spooky place for our 2016 Convention in Peoria. With the help of some goblins (Roberta and Alvin Cappel and Jay Rublaitus) the decorations really gave the room a frightful glow. As always, the hospitality room is a fun

place to meet up with our club friends and catch up.

The Pie Social was a hit with delicious pastries from LeBakery and the Firehouse Pizza party sure was fun.

Although she couldn't be there, Nancy Rublaitus made sure to send along her "famous" roast beef salad sandwiches!!

The club scrapbooks were also on hand to browse through and reminisce.

A great big THANK YOU to all who brought treats and utensils! Your donations are always welcomed and very appreciated. I can't wait to see what Myra Sustae has in store for us at the 2017 RBCC Convention in Louisville!

Secretary's Message

By Karen Church

Hi everyone! I'm sitting here in the end of February with the windows open and almost 80-degree weather. Unbelievable! Back to reality tomorrow though.

I would like to welcome our new members Mary Pat Ohms and Franklin Morse – see new contact info on page 4!

We're hard at work getting membership dues renewals. You should now see the update reflected on your mailing label. Thank you for so

many renewals! At press time we were still tracking down a few members to confirm they wish to renew – so I will have an updated membership count in the next newsletter.

Karen Church
RBCC Secretary
110 Blackwood Street
Beaver Falls PA 15010
724-846-4526
jkc110@comcast.net

In Memoriam

By Kat Thacker

We have received the sad news of the passing of two of our longtime club members this past month.

Tim Gaudet passed away suddenly on February 17 from an apparent heart attack. Tim was a past club president (1998 & 1999) and founding club member. A longtime collector and dealer of Royal Bayreuth (and antique cut glass, among other things), he sold in many antique shows and shops both in Maine and Brimfield, as well as eBay. He wrote several fine articles for us, and was considered a specialist in Rose Tapestry.

There will be a celebration of his life this summer, with his cremains to be interred in his family plot in Maine.

Rollie Rosenboom, our longtime club auctioneer passed away after a lengthy illness on March 10. We were so very lucky to have him as our wonderful auctioneer at almost

every club convention. His wit, sense of humor and extensive knowledge (along with his real love of RB) made each auction the true highlight for us all. His dear wife Ruth was always hard at work clerking during these events. We appreciated their extensive efforts for our club, and will miss him!

Rollie's public memorial service will be held on April 9 at the Iroquois County Fairgrounds 4-H Center near Crescent City IL. Interment in Clifton Cemetery.

Our heartfelt thoughts and healing prayers go out to their families. They will be sorely missed. We would welcome your memories about both these fine gentlemen to include in future issues.

More information and complete obituaries were emailed previously to our membership.

Mystery RB Devil

By Harold Brandenburg

From Dec 2009 - The piece of devil & cards shown below was recently purchased by a lucky person at a small Northeast auction. It is not marked, but has all the appearance of unmarked Royal Bayreuth. The match holder has a striker on the side that may be hard to see. I thought members would enjoy seeing this piece (I do not own it and it is not for sale!).



Clum Toothpick Auction May 31 & June 1, 2017

There will be an auction of nice toothpick holders at Clum Auction Gallery. Among the offerings: 80 RB pieces with 8 figurals, to be sold on the 31st! Check out their website for details and photos.

www.clumauctions.com/auction-schedule.html

www.clumauctions.com/toothpick-photos.html

A Chance Presentation

By Jim Lapp



Early in my exposure to Royal Bayreuth devil and cards pieces and other mostly German porcelain devil items in my collection, I had occasion to meet with Rich Stockwell at his home to share and discuss finds and curiosities. Among his collection of D&C pieces he showed me, there was a D&C beer mug that was a surprise. It was as expected, all the usual of the standard old issue, blue rim and all, but this one had a rounded edge at the bottom with the flat base. I have been on alert ever since and in a recent offering on eBay I noticed one of these alternatives and won the auction. I have only seen these two examples of this mold. I present it here for your review and wonder if others have seen or possessed any other examples. My regards to all.



Tales From the Hunt

By Jim Lapp

From March 2011 - Ashtray, or Holy Grail? Fresh with the flush of convention activities, I came home hot to discover what newly listed RB delights there may be to be had. I proceeded to scour the usual sites (eBay, Woody's, etc.) and found the expected for the most part; many unneeded D&C pieces, various undesired though fine examples and those that would nicely complement our collection but rare to the point of being unattainable.

As I was waiting to start my work day on Monday the eleventh of October, I was trolling the internet and among my "favorites" I saw an comprehensive auction site on the list I hadn't visited in four or five months and clicked on it. I typed in royal bayreuth and started the search. A few listings came up and then, further down the page there it was, an item being offered which I thought I would not see except in a photograph. Among a lot of four pieces, including a D&C milk, a pitcher with faces on three sides of unknown manufacturer and a small Japanese made cup in the shape of a devil's head, there was described a devil ashtray. I recognized it as a red devil demitasse saucer. I called Susan and told her I had found "one" and gave her the site address. This is the first I had seen offered since becoming a RB collector and thought it must be fate stumbling on it in this way. I decided to go for it.

The auction was to go off in two days. I registered to participate online but then Susan saw it was being held in New Jersey, (not far from our home) and suggested we go in person. We decided being "on the floor" was best since I had concerns about the online bidding process for such a critical effort, and in any case at least we would get to see it close up and real. Wednesday night we drove through a downpour for two hours to reach our destination. After fifty some lots came and went mine was next. I had seen that there were already a couple of online bids (no doubt persons known to me) so the anxiety was building. Suddenly we were off. Bidding started and went swiftly me against the net, no other bids from the floor. Back and forth, and back again. The price rose but then I heard the auctioneer ask the gal at her laptop "are we all done here?" after a pause, "yes". The thrill of victory!, coming in at considerably less than expected!

We got up to pay with many in the crowd wondering what had driven me. At the counter an assistant ask the lot number, "I'll go get it for you", he said. I paid and looked left to see this fellow carrying all four pieces in his hands, no tray or box to keep them safe. I held my breath until he was close and then said, "Could I have the plate please?" As Susan carefully wrapped the prize he said to me "so that's the special one, huh?" Yes, that's the special one. Good hunting to all!



Once Upon a Time

By Jim Lapp

At our first RB convention Susan and I attended in Pittsburgh 2007, we were eager to learn and discover. At the time, I had newly inherited a considerable collection of devil and cards pieces, the bulk of which, unknown to me until after my stepfather's death. As I have said before, I had admired the limited pieces that were on display in the "card room" but didn't know the extent of his findings.

During the proceedings of that initial gathering I met member Harriet Land. She heard that I had interest in things devil, and brought a piece she happened to have with her to show us with which I was immediately enthralled; a creamer she said she had found in a digger place on an obscure shelf and had gotten for a song. It was a creamer in the shape of a backgammon cup with a die tossed out as the spout



with an elaborate red devil handle. I took photos and was then on the quest.

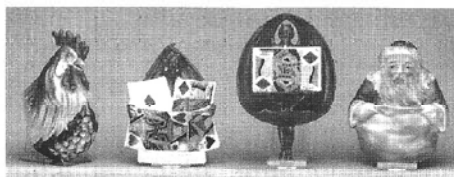
Recently, on eBay, the coveted piece became available paired with other items some of which were unknown to me including a sugar with a dice base and a cover with a lounging devil handle that seems all-the-world to be RB (thanks to all who alerted me and showed restraint).

I prevailed in the auction and can now present these rare pieces for your inspection, here the Land item complete with the proper lid and the other as a strong possible new addition to the RB Devil and dice collection. Neither of these pieces are marked but in the day, Harriet reported that she was told by Jim Davis that he was convinced that her creamer was true RB.

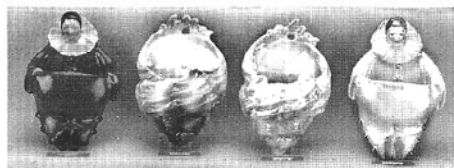
Wall Pockets

By Terry Andersen

Below is a copy of an image from Kovels November 1994 newsletter showing several wall pockets. These were from a Woody's auction in St Louis. The 23 match holders shown at right are now part of our collection. These are lighted on a wall in our collection room and enjoyed every day!



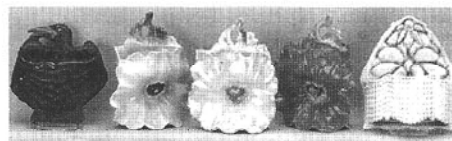
Royal Bayreuth hanging match holders, left to right: Rooster, \$400. Devil and Cards, \$350. Devil and Cards full body, \$1,800. Santa, (hairline inside pouch), \$1,050.



Red Clown, \$400. Green Shell, \$125. White satin Shell, \$200. Pearlized Clown, \$600.



Mountain Goat, \$525. Eagle, \$1,300. Chimp, \$1,250. Elk, \$375.



Black Crow, \$1,400. Yellow Poppy, \$500. Pearlized Poppy, \$500. Red Poppy, \$375. Oyster and Pearl, \$700.



Seeing Red

By Kat Thacker

So, you know that feeling you get, when you're out searching through an antique shop and spy something RED tucked high up on a display case shelf.

It's THAT red, the one used in many lines of RB figurals. Your heart beats just a bit faster, sometimes you sort of hold your breath while casually walking over to the case. The color is a true red, quite warm and very glossy... and SO recognizable! There are a few "look-a-like" glazes from several other early German manufacturers, Czech and even Japanese companies that can fool you for a minute, but they are slightly different once you see them up close. You always hope it's one of the rarer pieces, but even if it's just a more common lobster or tomato, it's still part of the thrill of the RB hunt!

Since we had gotten in several nice articles from Jim Lapp on his Devil & Card pieces...it made me think about how much we love all the other red RB to be found too. Here is my quick survey on known varieties of our crimson-hued porcelain.

A list of predominantly red figural pieces...

- Red Devils (Devil & Cards)
- Lobsters (Lobster & lettuce)
- Tomatoes
- Poppies
- Poinsettias
- Other flowers/Roses
- Chinese Lanterns
- Peppers
- Red animals: cow, bull, pig, crow, frog, cat, poodle, rooster, eagle
- Ladybugs, beetles
- Santas
- Clowns
- Coachmen

Have you seen any others in your quest for unusual combinations? It would be great if you could share your rarer RED RB stories with fellow members. Photos would be a bonus. Any RED shoes out there???

