



ROYAL BAYREUTH COLLECTORS CLUB

VOLUME TWENTY SIX ISSUE THREE

Winter 2021/2022



ROYAL BAYREUTH COLLECTORS CLUB

www.royalbayreuth.org

PRESIDENT

Wib Beachy
251 Hickory Hollow Road
Somerset PA 15501
814-443-2796

VICE PRESIDENT

Paul Stratman
7814 East Mackenzie Drive
Scottsdale AZ 85251
602-499-3234

TREASURER

Steve Bartlett
1320 Waterford Drive
East Greenwich RI 02818
401-885-5889
dufferdogri@gmail.com

SECRETARY

Chris Bartlett
1320 Waterford Drive
East Greenwich RI 02818
401-885-5889
chrisbartlettri@gmail.com

EXECUTIVE BOARD OF DIRECTORS

Chris Bartlett
1320 Waterford Drive
East Greenwich RI 02818
401-885-5889

Sandy Heerhold
2011 Eagle View Road
Hendersonville, TN 37075
630-466-7601

Jim Lapp
4909 Curly Hill Road
Doylestown, PA 18902
267-872-9964

Bob Mazza
111 South Compo Road
Westport CT 06880
203-981-0920

Karen Rublaitus
48 Jerry Circle
Atoka TN 38004
901-233-3945

Myra Sustae
2613 Springmill Rd
Findlay OH 45840
419-424-0178

EDITOR

Kat Thacker
311 West Drayton
Ferndale MI 48220
editor@royalbayreuth.org
248-545-0392

HISTORIAN

Myra Sustae
2613 Springmill Rd
Findlay OH 45840
419-424-0178
mjsustae@gmail.com

Our Cover Story - Down The Rabbit Hole

By Kat Thacker

This issue brings an amazing mix of more beautiful RB teacups. We've featured quite a variety over this past year, so here are a select few, dancing with abandon on our cover. We thought it would be perfect to use Alice in Wonderland's White Rabbit to announce a "virtual tea party" at Mister Beachy's. All are welcome to join in the fun through the newsletter!!!

Notable eBay Sales

By Gregg Thacker

Interesting pieces sold from August 17 thru Dec 21, 2021. Rounded to nearest whole dollar. Final sale price does not include fees or shipping. Many listings did not sell, while others sold at very low prices. Still looks like a good time to buy!

RB "Lily" (Orchid) Water Pitcher 6 1/2" Tall (234347853426)	\$1,554
RB (Blue Mark) Red Santa Claus Water Pitcher 6 1/4" (324862839039)	\$1,350
RB Rose Tapestry Chocolate Set (294426516215)	\$950
Iridescent Shell Nautilus Tea Set Teapot Cream Sugar Mustard Pot (203710969936)	\$400
RB Lobster Creamer, Purple, Excellent Condition (384493265823)	\$302
Devil Head Ashtray - Bermuda Souvenir (294149591973)	\$300
Bear Creamer 4 1/4" (324869857591)	\$250
Strawberry C&S -Creamer 3 3/4", Sugar 4" (393604651823)	\$22
Clown Milk Creamer Pitcher 4 1/4" (265392633252)	\$20
Advertising Display Plaque - RBCC Club Plaque (265368504827)	\$18
Lavender Pansy Creamer Pitcher Blue Mark 4" Tall, Very Good (165218737151)	\$16
Square-sided creamer 3 1/4" Blue Mark (324717660295)	\$11
"Pumpkin Tomato Porcelain China Autumn Holiday Creamer Sugar Set" (255189376876)	\$4
Tomato Creamer Marked, Very Good Condition (294459662323)	\$1



From Our President

By Wib Beachy

Hello again fellow RBCC members.

The holidays are upon us once more to mark the end of another year which has come and nearly gone. 2021 while somewhat better than 2020 had its own COVID-19 ups and downs with the variant strains of that Virus. After adding to those ups and downs non-COVID-19 familial health challenges for a number of members I know, I pray and hope 2022 brings real improvement to the lives of all who have been affected by the pandemic and/or by one's and one's family simply becoming older and less healthy.

As Kat wrote in the last newsletter, this issue will see the final printed and mailed version of the Club Newsletter. Beginning with the Spring issue, the newsletter will be published on-line only. For that reason, I have tried to make this issue special by having expanded photographic content to accompany the articles which appear herein.

For my part, I have submitted a further update on the Art Department (or Kunst Abteilung) line of wares that has captured my attention. This line includes but is not limited to the so-called Imperial Line of 30 pieces shown in Mary's Book II. I now have 15 of those pieces in the fold -- 3 of which are pictured for your review. Also depicted is a later (and modern) remake of one of the original 30 pieces -- a topic I discussed in the last newsletter.

As part of the Kunst Abteilung line after the Imperial Line, there is another stunning Neo-Classical sculpture I have acquired. Titled "Die Quelle" or "The Source", it overwhelms with its size, lines, subtle colors, and finish. It underscores why the Tettau Factory was renowned for what was produced under the Art Department's auspices.

Closely aligned with the Imperial Line were the patriotic pieces produced before and after World War I. A wonderful cup and saucer displaying the Imperial Eagle and a raised dragon or griffin handle are shown. They are similar to but different from the patriotic cup and saucer that were featured in our December 2020 issue.

Discovery pieces which were previously unknown to me also appear in this issue. They include a scenic Santa Claus mug or stein without cover, a 1913 Christmas plate, a prototype Town Crier figural jug, and a figural rose elongated dish -- all of which are marked. With them are other rare and seldom seen pieces including the moose, platypus, and kangaroo milk pitchers (the moose water pitcher is pictured as well); the agate fairy nymph pin dish; the clown facial powder box; and the Oriental man ashtray.

Older Tettau and Art Deco pieces are found as well. A couple of Wannabes are added for good measure. I believe you should enjoy what you will see. If you don't, it's not for my lack of trying.

Two collections are or will be coming up for sale. In early November I traveled to Marietta, Georgia to appraise

Art Ward's pieces. Before I did that, I visited with Mary McCaslin at her new residence in Indianapolis. Contact and sale information for those collections is provided in this Newsletter.

Within this newsletter you will find a Dues Notice for 2022. I ask that you remit your renewal membership dues of \$30 in a timely manner. Even without printing the Club Newsletter, the Club does have expenses in need of payment. Your dues provide a continuing source of monies for such payment.

I want to thank Janet Belcher who has retired from her position as Secretary for the Club. Janet was a tireless worker not only as Secretary but also as one I could and did count on repeatedly in making things happen for the Club. The last Club Convention in Pittsburgh especially stands out in my mind.

Chris Bartlett has agreed to assume the duties of Club Secretary as she had in the past. With Steve as Club Treasurer by her side, I know the transition will be seamless. I thank Steve and Chris for their service as well. The Club has been blessed to have Janet, Chris, Steve and others as officeholders. They have been mainstays for the Club.

Finally, I want to address the Club's future. I believe the Club remains viable. There is no question challenges are present to that viability. However, those challenges are not unique to the Club. Collector clubs generally are presented with the same primary challenge of declining membership over time because of old age and lack of new blood. The younger generations clearly do not have the interest in the antiques and fine arts we had when we were younger.

Changes to recognize those challenges may be desirable if not necessary. No longer printing the Club Newsletter when it is available online to save on resources is an example of change to recognize the reality we are living in a computer age from what had been true in the past. I will be canvassing the Board by email and by phone on several topics related to the challenges to the Club's continued viability. They include review of Club dues both as to need and amount, differences between non-members and members in the accessibility to the Club's website, and the holding of regional get-togethers as opposed to an annual Club Convention when the circumstances permit. Whatever changes the Board decides to make on these and other topics will be made known to you through the website's Club Newsletter and/or by email blasts.

As always, if you have a comment you wish to have me consider, please contact me and I will do so.

New Members

By Gregg Thacker

Please welcome our new members to the club. Michael Singer joined RBCC in December when he was in the process of buying a RB lobster collection with service for 8! He also collects RB dinnerware and is looking for several pieces to complete a set and is familiar with Replacements Ltd. More about his collection in the next newsletter.

Michael A. Singer
2108 N. Essex Ave
Hernando FL 34442
Cell: 206-794-3579
Michaelasingersr@gmail.com

Paul Shaw also joined in December after finding the group on Facebook.

Paul Shaw
20587 Texas Hwy 19, Lot 1
Canton Tx 75103
Cell: 720-498-6137
Pshaw6915@comcast.net

Member Updates

Mary McCaslin has moved and has a new mailing address. Her email and cell phone remain the same.

Mary McCaslin
Greenwood Village South
295 Village Lane, Apartment 30
Greenwood, IN 46143
maryjack1932@yahoo.com
Cell: 317-385-1777

Laura & Mike Knoop have a new address – please update your Rosters.

Laura and Mike Knoop
5202 Asbury Ave
Ocean City, NJ 08226

Newsletter Submission Deadlines

- March 1 for Spring Issue (First online only issue)
- Sept. 1 for Online Autumn Issue
- Nov. 1 for Online Winter Issue

Editor's Message

By Kat Thacker

Warm Winter greetings to our RBCC friends.

Well...the plague is still upon us, and we're all doing our best to be extra careful as we navigate through this latest round. We celebrated the holidays solo again here in Michigan, feeling that even though fully-vaccinated, it wasn't worth the risk to immune-compromised friends and family to see them in person. FaceTime was the way to go, even though it wasn't nearly as much fun. Hoping everyone in our Club (along with your friends and families) are safely weathering this virus, as well as the extremes in weather that have landed hard on many of our members these past months.

You are now holding the LAST PRINTED ISSUE of our Club Newsletter. We are moving to digital-only versions to be sent to current members via email link from now on. The next issue will be Spring/2022, followed by Autumn/2022, then Winter/2022. Please check info on submission deadlines for 2022 found in this newsletter.

You'll need to pay your CLUB DUES by February 14 to continue having access to our member's area of the website and digital newsletters. Use the membership form slipped in this issue, and mail back to Treasurer Steve Bartlett with your check enclosed. Be sure to update any personal information so new Club Secretary Chris Bartlett (welcome back Chris!) can make any changes. You won't want to miss out!

From now on, Gregg & I will not be creating articles or content on a regular basis. Our plan is to run any articles, news and photos that are sent in to us by you, our fellow members. So unless there are submissions made, the issues will be very thin.

If you've never sent anything to share, now is the perfect time to

jump on board! How did you get started collecting RB? What's your all-time favorite piece of RB in your collection? Why not share a "Tales of the Hunt" about a great/cheap/rare find you've made? What are your favorite places to find our favorite porcelain? We all have these stories to share, or even just some great photos of how you display your RB. Many of us are stuck at home, so this is your chance to get creative and have fun sharing your collection! These are all the kinds of things we're hoping to get sent in for future issues...

In closing, we'd like to thank Janet Belcher for ALL the years of service for our club. She was invaluable in her position as Club Secretary (as well as Recording Secretary at our conventions). I shall miss our calls and emails dealing with club (& other) stuff. Hoping she & Alan can now take things a bit easier, enjoying their family and the winter sunshine down in Naples!

And kudos once again to our great Printer (& Layout Artist) Heather Wiskow at Images in Ink. We've had a really good working relationship throughout ALL these years, and appreciated the many beautiful newsletters we've created together.

Many, many more thanks go out for all the wonderful stories, scholarly articles and great photos sent in by our members over these many years. Wib, you've come through again this issue with all the wonderful photos and interesting observations filling its pages and thank you to Jim Lapp for his latest story! We certainly couldn't have done any of this without ALL the amazing submissions from ALL our contributors over the years!

Please take care and be safe out there in this new year. Our wish is that everyone has a HEALTHIER, HAPPIER 2022!!!

Secretary's Message

By Janet Belcher

Hello Members, we have entered another season of our calendar year and likewise we will be entering a different season within the structure of the RBCC which will be addressed within this newsletter. It appears that the time has come to become more viable through the digital and social media platforms.

Another change taking place is in the office of club secretary. Chris Bartlett has graciously accepted this role. She comes with years of previous experience and co-ordinates easily with our treasurer Steve Bartlett, the making of a great partnership.

So at this time, I am stepping back from an officer role but will still be connected to the club by way of the new format. I truly treasure the memories of past conventions, friendships made and the joys of collecting this fine German porcelain in its vast variations!

RBCC Treasurer's Report (9/30/2021- 12/31/2021)

By Steve Bartlett

Checkbook Balance as of 9/30/2021: \$5,625.45

RECEIPTS

Total Receipts \$0.00

DISBURSEMENTS

Images In Ink Autumn Newsletter \$713.08

Total Disbursements \$713.08

Checkbook Balance as of 12/31/2021: \$4,912.37

Looking Back

By Gregg Thacker

Time again to wander back in time to see what the RBCC was doing way back when. As a reminder, all club newsletters are available to read on our website. Below are some interesting RBCC events and news. Let's set the wayback machine for:

10 Years Ago (Dec 2011): "Doings in Dayton" was the theme after we had just completed the 2011 convention and Cappel's "Apfel-Fest" there. Kat created a presentation on apples and I shared photo tips (both presentations still in the member's area of the website). Lots of convention photos showing fantastic displays, the 160+ piece auction run by Steve, and many smiling faces!

15 Years Ago (Dec 2006): Kat adopted the role as Newsletter Editor and introduced herself. Everyone was recovering from the Milwaukee convention – fun was had by nearly everyone. A presentation on shoes and another on clowns (plus a clown entertainer) made it fun. Ida Parrott

and Fred Zumthurn wrote a verse highlighting convention events (read to the tune of "The 12 days of Christmas"). President Tim Sullivan recapped his struggles with several members regarding budget and announced his resignation. Tim Gaudet wrote a fun article about figural shakers (reprinted elsewhere in this issue).

25 Years Ago (Dec 1996): Members were enjoying memories of the club's 2nd convention – held in Schaumburg IL. Mary McCaslin was introduced and was selling copies of her new book. Jim Davis told of visiting the RB factory in Tettau in 1972 after the Salley book was published. The factory director had never seen the Corinthian pattern. Jim later sent the museum a piece of Corinthian for their display. The member renewal drive was in full swing at \$30 per membership. What other fee can you name that has not increased in 25 years!

A Message From Your New (Recycled!) Secretary

By Chris Bartlett

Hello fellow club members! After many years of dedicated service as Club Secretary, Janet Belcher has turned over the reins to me, Chris Bartlett. Yes, many of you will recall that I was Club Secretary for many years but I agreed to once again take the position. Wib, you are TOO persuasive! With my husband Steve as Club Treasurer this becomes a seamless transition for the collecting of dues and other club projects.

Please note the form in this newsletter for membership renewal. It is due to Steve by **February 14, 2022**. If you do not plan to renew, please contact me so I can update the club records. My email is chrisbartlettri@gmail.com or you can call me at 1-401-885-5889. I look forward to once again hearing from all of you and working for the Royal Bayreuth Collectors Club!

Please DO send in your own articles and photos by MARCH 1ST to be included in our first ever digital-only newsletter. We truly need YOUR participation to keep this going strong!

Sales of Mary McCaslin's and Art Ward's Collections

By Wib Beachy

At the end of October I was able to travel to Indianapolis and visit with Mary McCaslin at her new apartment. She had just moved in, but already had begun decorating it as only Mary could. By now I'm certain it is the showplace of the complex.

Before I left, she told me she is now selling pieces from her R.S. Prussia as well as Royal Bayreuth collections. If any Club member has interest in acquiring pieces from her collections, I suggest that member contact Mary by emailing her at maryjack1932@yahoo.com or by phoning her at (317) 385 - 1777. Any pieces not sold privately by Spring are expected to be consigned by her for auction by an auction house experienced in dealing with such collections. Future Club Newsletters will contain the details for any and all such auctions of pieces from her collections.

In early November I traveled down to Marietta, Georgia to appraise Art Ward's Royal Bayreuth collection. At that time photographs of his collection were taken, several of which are reproduced for your review. The Executor for Art's Estate, Bryan Sullivan, invites any Club member who is interested in purchasing any piece or pieces of Art's collection to contact Bryan by emailing him at the following address: bjsully55@att.net or by telephoning him at (770) 845-3335. He would like to see Art's pieces remain in the hands of other Club members



Website News

By Gregg Thacker

Happy New Year RB fans! Hopefully you and yours enjoyed a healthy & restful holiday. Since this is the last printed newsletter, our website will be increasingly important. All newsletters are on the site, as well as past convention photos, scrapbooks, and lots of history. Future member auction details and other news will be found on the site too.

We are seeing a lot more traffic & topics on the Facebook page. If you

have a FB account be sure to search and join "Royal Bayreuth Collectors Club". We do share some tips and tricks there (but not the extensive content available to paid members on our website). Paul R. Day and I are administrators of the FB page – so if you have trouble just contact one of us.

As a reminder, if you are NOT receiving email updates please send a note to Editor@royalbayreuth.org and we will add you to the list. This

is especially important going forward since the newsletter will no longer be mailed and all communications will be via email and the website.

Wishing you happiness & good health in 2022!

Current 2021 Member User Name & Password

(all small letters)

User name:

Password:

Variety is the Spice of life (Dec 2006 Reprint)

By Tim Gaudet

The purpose of this article is to revisit some information about Bayreuth figural shakers and if my title is true, the Tettau factory must have been a “spicy” place to work. One thing that has always amazed me about Bayreuth is the endless variety of shapes and colors available. The designers and decorators were amazingly creative!

Based on my collection, pieces I have sold, photos in Mary’s books and other collections, I can document 48 different shapes and over 70 color combinations; for sure there are others I am not aware of.

Fruit can be found in apple, orange, 3 types of strawberry, cherry, plum, lemon, and melon. Veggies include 2 styles of corn, 2 tomato, both cucumber and pickle, radish, and 3 different forms of pepper. There are 3 shapes of shells, while the people shapes include clown, devil and card, coachman, lamplighter, and bellringer.

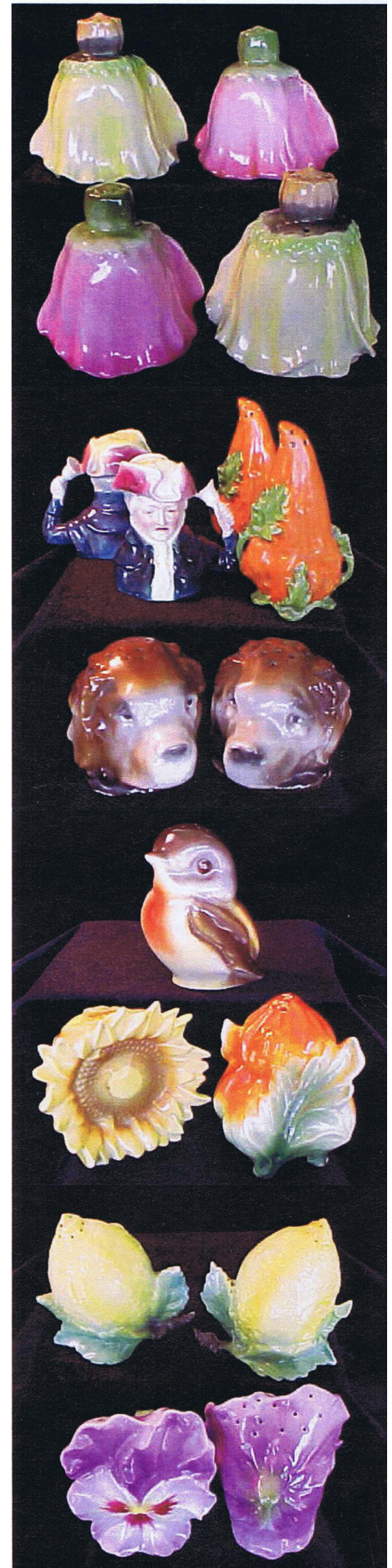
Flowers and leaves include pansy, mum, geranium, sunflower, 2 sizes of poppy, rose, Japanese lantern, oak leaf, and maple leaf, as well as pinecone. Birds and animals seem to have the greatest variety and include both lobster and lobster with leaf, elk, perch, chick, horse head, duck, alligator, Saint Bernard, trout, 2 styles of owls, crow, and dachshund. To my knowledge no Santa or art nouveau shakers have been found, but I think they must exist... I can picture the Santa hatpin shrunk down in size. How nice it would be to find it sitting on a dusty flea market shelf!

Remember that many RB items are not marked, especially small or irregularly- shaped pieces. Known marks include the blue crest with double or single lion, Depose in gold, blue, or black, Bavaria in block letters in several different colors, and the impressed Deponiert mark. Weight can vary greatly and the owl and grape shakers seem to be heavier and more dense than most of the other shapes. A smart buyer looks at color, form, design and details... NOT the mark!

The range of colors is stunning! Grapes are fairly common, but I have pairs of grape shakers in 14 different colors. Included are satin, matte and glossy finishes, that when seen together in a group, make a truly amazing display. Pansies come in purple, magenta and white satin; clowns are found in red, yellow, green, and white satin. Rose pieces are seen in solid red and solid gold, pink/white and pink/yellow. The Saint Bernard has at least 3 different combinations of brown, black and gray. I have pairs of poppies in 7 different colors in glossy, matte and satin finishes.

If you are a true purist you want a salt and pepper with different-sized holes. but I know for a fact that they sometimes left the factory with 2 salts or 2 peppers as a pair. I have 4 different sets that I bought from friends in Maine that have the same-sized holes, and I know for sure that these pieces were always in the original owner’s families like that; they either left the factory that way, or perhaps, when unpacked at stores for sale, they simply got mixed-up on the shelves.

The biggest unanswered question is... what else is out there waiting to be discovered? Does a Santa or a figural eagle shaker exist? Is there an open-mouth bass shaker to match the different sizes of pitchers? I have had a poppy sugar, creamer and gravy boat in a matte finish the color of coffee with blue highlights, but have never seen the shaker in that rare color. The search for the next great find is what makes us the antique junkies we have all become! Happy hunting.



Further Update on Kunst Abteilung Pieces

By Wib Beachy

Kunst Abteilung or Art Department pieces started with the so-called Imperial Line consisting of 30 pieces first displayed in two color plates (Table IV and Table V) within the book entitled “Tettau” published after the end of World War I and later reproduced in Mary’s Book II. They ended in 1939 at the outbreak of World War II. In this period, which I have dubbed the “Lost Years”, many more pieces than the original 30 were manufactured under the Art Department’s auspices and with its distinctive mark. Art Nouveau, Art Deco, and Neo-

Classical examples were all made.

Molds of these pieces were not destroyed by fire as had been true for the earlier Royal Bayreuth scenic and figural pieces. Several of these molds were later used in producing pieces with different decorations from those employed for the original 30 and without the Art Department’s own mark. The last Newsletter contained photographs of two such later pieces shown with their original counterparts.

With this update two photographs of another such later piece are shown. It is a large covered dish featuring a bird as a handle for its top and a base on six raised feet. It is of the same mold for its original counterpart pictured as the second piece on the first row of Table IV. It has very little decoration in contradistinction with what appears on the original. Significantly, its mark indicates it is of recent production.

Three of the original 30 pieces are also depicted. They are the egg-cup



shaped vase with latticed top shown as the third piece on the first row of Table IV and the two covered jars shown as the second and third pieces on the top row of Table V. All have the Kunst Abteilung mark.

As fine as these pieces are, another Neo-Classical sculptured piece entitled “Die Quelle” or “The Source” I have acquired has to be seen to be believed. Three photographs of it are provided. Designed by Valentino Casal, it is a maiden sitting on a profiled and ornamentally decorated pedestal fountain and bending to catch water flowing from that fountain in a bowl. The molding, colors, and finish are all superb and well worthy of its Art Department marking. One can only wonder how many more of these gems are out there, just waiting to surface!



Recent LiveAuctioneer Sales

By Gregg Thacker

RB Lots sold by various auctioneers from August 17 thru Dec 21, 2021. Rounded to nearest whole dollar. Final sale price does not include fees or shipping. Dozens of lots were passed, and many sold for less than \$20. A very good time to buy!

Lot of 13 Devil & Cards “Elizabeth Austin Hammon” Estate	\$1,500
Covered Santa Box, Blue Mark	\$1,600
Group of Twelve Royal Bayreuth Figural Creamers	\$750
Devil & Cards Water, Blue Mark, 7 1/4” x 7 3/4”	\$325
Twenty-Two RB Table Wares from “New Haven Collection”	\$300
Mixed RB Tableware, 15 Pieces from “Estate of Elizabeth Austin Hammon”	\$275
Set of 4 RB Roses	\$225
Iris with Leaf Tray, Marked.	\$90
Orange & Black Corinthian Pitcher, 3 3/4” H	\$60
Pair of Poppy Teacups, Smallest 1 3/4”H, Largest 3 3/4”H Plate 4 1/4”D	\$50
Black Bull Porcelain Creamer, 3 3/4” H x 6” W x 3 1/4” D	\$32
Watermelon Water, Creamer, Plus 2 Salt Dips	\$30
Pair of Eagles, Smaller 3 3/4”, Larger 4 1/4” in.	\$30
Oakleaf Water, 6 1/2 x 8 1/2 x 5 1/2 in	\$30



Show & Tell

By Wib Beachy



A further patriotic full size Imperial Eagle cup and saucer set is shown. It is very close in appearance to another patriotic cup and saucer set shown in the December 2020 Club Newsletter -- save for the cup's handle. This set has a dragon or griffin handle to the cup; that set had an Iron Cross as part of its cup's handle. Like 2020's set this year's set has the domestic market RB mark used after World War I.



That same mark is found on three demitasse cup and saucer sets pictured as well.



The earlier Tettau mark appears for three other demitasse cup and saucer sets as well as a full cup and saucer set shown.



Later in time were three more demitasse cup and saucer sets plus a full cup and saucer set. The last demitasse set is a perfect example of the Art Deco style.

A strawflower cake plate which may be the earliest in time of all pieces depicted deserves to be included in this presentation, if for no other reason -- its survival. Simple yet striking in its appearance, it is a keeper. I believe it to be from the mid-1800's.

Speaking of Art Deco I can say there is nothing more representative of that style than the triangular covered pin box further pictured. Coming from Bulgaria, of all places, its decorations and colors are bold to behold. Its mark dates it back to the 1920's.



Contrast it with the Art Nouveau vase shown. The colors are soft and the floral pattern flows. Having the early blue RB mark, it is both easy on and soothing to the eyes.



Believe it or not, a shoe closes Show and Tell. It has a Pennsylvania location, Mt. Gretna, painted on it as well as a green, not blue, early RB mark. While I'm not a shoe devotee, those two features were enough for me to purchase it (along with the price of \$19).

Discovery Pieces -- Four in All

By Wib Beachy



Just in time for Christmas are two pieces I have never seen before in over 30 years of collecting. The first is a scenic Santa Claus mug or stein without cover. It has the standard blue mark.



The second is a 1913 Christmas Plate produced by the Tettau Factory with a mark corresponding with that time period. It is a heavier piece than one would expect, perhaps to accommodate the additional raised Star of Bethlehem molded to its underside. It is the earliest plate of its type I know that exists.

The third piece is one I have seen only once before -- many, many years ago -- which I have nicknamed the Town Crier. I believe it was a prototype that was not mass produced like the Coachman, Bellringer, and Lamplighter. I say this because of a black numerical marking appearing on its bottom. I recall Jim Davis telling me such a marking was to designate a piece as experimental in nature. The matte colors and glazed finish underneath along with its weight are all RB.



Saving the best for last, I present the elongated figural rose dish. The molding, colors, and finish are incredible! Bearing the early blue RB mark, it is the finest figural Royal Bayreuth piece I have ever encountered. How it survived in its pristine condition is a wonder for the ages. Daughter Dearest has quite a heirloom to possess and enjoy before passing it on.

Rarities and Oddities

By Wib Beachy



Headlining the former are three figural milk pitchers -- the moose, kangaroo and platypus. The moose milk pitcher was misidentified as the elk and was included in a grouping of an elk water and an elk creamer offered as a lot at auction.



It is shown with its correct brethren in water and creamer sizes as well.



The kangaroo and platypus milk pitchers are depicted with the creamers of their respective species. I have only anecdotal evidence that water pitchers may exist for both these "Down Under" critters, as Harold B. would have called them.



Next is the agate butterfly fairy dish with variant blue mark. Agateware is very rare but obvious because of its relief and color features. I have only seen a half dozen pieces in my years as an RB collector.



The Art Nouveau Lady wall vase/ wall pocket and small basket depicted are rare as well. Rarity of the former is based on its multi-colors. It is ordinarily seen in the white or off-white pastel versions. The latter is rare because of its size.



The small scenic decorated fairy vase also is rarely seen. It has a blue beehive mark that was sometimes placed on Royal Bayreuth pieces. I have a polar bear plate with both it and the regular RB blue mark on the underside.



Likewise scenic and rare is the Babes in Woods series covered biscuit jar. It has two marks, indicating it was a transitional piece. The first is the earlier Tettau mark; the second is the standard blue RB mark.



The variant clown powder jar and Oriental man ashtray qualify as rarities as well. The powder jar is figural only on its top, which is limited to the facial area of the clown's head surrounded by a ruffled collar. Both it and the ashtray have the regular blue RB mark.



Further pictured is the crow wall match holder. I have seen it only a handful of times. It, too, has the regular blue RB mark.



Transitioning from the rare to the odd are two scenic nautical pieces. The first is a very large sailboat pitcher. Its eerie blue color and size makes it both rare and odd. Similarly, the much smaller sailing ship toothpick is both rare and odd because of its design.



Strictly odd is the clockface elk mug/stein mentioned in the last newsletter. [4006]. Whatever its purpose was, I cannot discern. It was simply odd enough for me to make it part of my son's collection.

It's TIME to renew your RBCC Membership!

Please use the enclosed renewal form and send to Treasurer Stephen Bartlett by February 14th. Don't forget to include your check. You won't want to miss any upcoming RB news & info!!!

A Curious Turn of Events

By Jim Lapp

Some years ago there was a woman I never met and I will always regret not having the opportunity to do so. She was a RBCC club member at one time, but not so when I first made contact with her. Her name was Grace Cornforth and she lived in Cinnaminson New Jersey, perhaps one of our members recalls her.

At the time she was in her mid to late eighties and a no-nonsense, game gal. I was told that she was a fellow devil and cards series collector and that her collection was extensive. Naturally I was eager to see if there were pieces there that I didn't have so I gave her a call. She was apprehensive at first but as we talked she became assured that I was legitimate, an enthusiast as she was and enamored of the D&C production. She said she had a goal of pulling together three complete sets of the devil and cards pieces to one day leave to her three grandchildren.

During our conversation she told me that she loved the Royal Bayreuth pieces but she also collected other porcelain items with a devil theme, such as the German fairing and those of Shafer and Vater. Now I was very interested in seeing her collection and suggested we meet. She said she couldn't right away but maybe in a few weeks. Time went by and in a few months the RBCC convention was approaching. We still hadn't gotten the opportunity to meet for one reason or another. I told her of the upcoming gathering of RB devotees and suggested that if she would rejoin the club, Susan and I would be happy to take her there with us. She was very happy with the possibility of attending and said she always wanted to go to an RBCC convention but never was able to.

Shortly before the 2011 convention in Dayton, Grace fell from a ladder and broke her leg so couldn't come with Susan and me. I spoke to her a few more times but she wasn't up to a visit. A few months went by and suddenly I heard she had died from complications during her recovery. I had one short conversation with her daughter but after

that, it seemed that that was the end of the journey.

Some months ago I did a general search on eBay as I often do, for porcelain devils. I found a couple from the same seller that were interesting and so bid on them and won. When I went to make payment I saw that they were in a town not far from me, so asked if the seller would allow local pick-up. After jumping through the usual eBay hoops, the seller was able to send information so I could retrieve the pieces. I could have just had the items sent through the mail but I was curious to hear any backstory there may have been.

Upon arriving I was greeted by a woman and her husband and brought to a small dining room. We chatted as I inspected the pieces and I asked if she had any more devil pieces she would be listing. She said yes and that she was selling them for her cousin. She led me to another room where there were many of the usual devil and cards pieces as well as other, mostly German, porcelain devils. As we talked she told me a little more about her cousin and how she had inherited these items from her mother. The woman reached over to the side and came up with the Raines guide and pointed to the cover and said "we have one of these too", meaning the full bodied devil wall match. I asked to see it and was led to her larger dining room. There were even more D&C pieces with many duplicates. Things started to flash in my head and I asked again about how her cousin came to have them and asked if she knew the name of the cousin's mother. She said no but she thought her first name was Grace. Ah yes, Grace, my suspicions were confirmed, it was my Grace. Some big circle, and such a small world.

I still wish there would have been the opportunity for a meeting with Grace but now I have even more to remember our brief encounter by.

Good hunting my friends, we think of you all often....

Wannabes

By Wib Beachy

No issue of the Club Newsletter would be complete without at least one Wannabe. For this issue I have two -- a scenic Leprechaun demi-cup married with a RB saucer and a gold washed sunflower demi-cup with saucer. The former's demi-cup is unmarked and lighter to the touch than RB would be. The latter is photographed to the right of the real RB sunflower demi-cup and saucer. The colors, finish and weight make it very easy to tell which set is RB and which set is the Wannabe.

