



ROYAL BAYREUTH COLLECTORS CLUB

VOLUME TWENTY SEVEN ISSUE ONE

SPRING 2022



Celebrating Mary!

ROYAL BAYREUTH COLLECTORS CLUB

www.royalbayreuth.org

PRESIDENT

Wib Beachy
251 Hickory Hollow Road
Somerset PA 15501
814-443-2796

VICE PRESIDENT

Paul Stratman
7814 East Mackenzie Drive
Scottsdale AZ 85251
602-499-3234

TREASURER

Steve Bartlett
1320 Waterford Drive
East Greenwich RI 02818
401-885-5889
dufferdoggri@gmail.com

SECRETARY

Chris Bartlett
1320 Waterford Drive
East Greenwich RI 02818
401-885-5889
chrisbartlettri@gmail.com

EXECUTIVE BOARD OF DIRECTORS

Chris Bartlett
1320 Waterford Drive
East Greenwich RI 02818
401-885-5889

Sandy Heerhold
2011 Eagle View Road
Hendersonville, TN 37075
630-466-7601

Jim Lapp
4909 Curly Hill Road
Doylestown, PA 18902
267-872-9964

Bob Mazza
111 South Compo Road
Westport CT 06880
203-981-0920

Karen Rublaitus
48 Jerry Circle
Atoka TN 38004
901-233-3945

Myra Sustae
2613 Springmill Rd
Findlay OH 45840
419-424-0178

EDITOR

Kat Thacker
311 West Drayton
Ferndale MI 48220
editor@royalbayreuth.org
248-545-0392

HISTORIAN

Bob Mazza
111 South Compo Road
Westport CT 06880
203-981-0920

Cover Story

By Kat Thacker

Did you know that our very own Mary McCaslin turned 90 on February 14th, Valentine's Day??? For our new members, she and her late husband Bob were founding members of the RBCC, and she authored BOTH the most-consulted and loved books about our favorite porcelain. She continues to share her extensive knowledge of RB (and many other antiques) as well as be a very active lady. Mary enjoys traveling to visit her extended family and friends all over the country...

Our cover art is a loving celebration of Mary, and a big thank you for all she and Bob have shared with our members over the years.
HAPPY BIRTHDAY MARY!!!

Finding O' the Green

By Kat Thacker

Jim Lapp reports a recent (and unusual find) just in time for St. Patrick's Day! This little demitasse cup sure resembles the known form RB devil & dice variety, (and came with the card saucer) but no little red imp here. Instead the four-leaf clover has become the handle. Also unusual, the dots on the die are metallic gold! There is no specific RB mark, but it does have the number 8 on the cup.

The seller shared that his great, great grandmother bought it, and he grew up seeing it in his great grandmother's china cabinet. Lucky to have found such a gem!



From Our President

By Wib Beachy

Hello again fellow RBCC Members. Well, it's March and, while I haven't seen them yet, my wife tells me that the ducks have made their first appearance on our pond for 2022. With the young deer showing up to feed on the corn I continue to put out daily, they are the harbingers of Spring each and every year for me. It has been that way for the past 60 years I have been connected with my home property -- initially as a boy and now as an older man. I enjoy this time of year for its freshness and promise as a restart from the winter doldrums.

Although the pandemic continues, it seems to be lessening in its intensity. Because of this, I have begun to look once more at a get-together later in the year. Philadelphia remains the logical location, since it was being considered as the next Convention site at our last Convention in Pittsburgh 2 1/2 years ago. Try to keep open Labor Day week (after Labor Day itself) on your schedules. Rates begin to drop then. If circumstances permit a get-together, expect email blasts and an announcement on the Club's website and other social media to that effect with details for such a get-together.



While this newsletter is the first online-only version, the format remains the same as before. Since it is the Spring as well as Summer issue, photographs of my older daughter Jennifer's collection of Royal Bayreuth butterfly, moth and dragonfly pieces -- both figural and scenic -- are featured to celebrate the seasons in which they as God's creatures first appear and then mature. The molds, colors and finishes of these pieces are among the best and finest Royal Bayreuth ever produced.

I also have included photographs of pieces I consider the proverbial "crown jewels" of my collection. They are the Lady in Flowing Gown, free-standing white cat, and lidded black cat covered sugar or pin box. The molded mouse as the handle on the last piece is an especially nice touch!

Other pieces appear for their rarity as well. They include the Stag & Doe watering can, the peacock fruit cup, the variant rose bowl, the silver Rose Tapestry pitcher, the yellow plum as well as cucumber salt and pepper sets, and the Man in Gondola plate. One of the original 30 pieces of the Imperial Line -- the owl stamp blotter complete with paper label -- is further displayed.



Photographs highlighting mistakes sellers make while describing pieces follow -- a topic I have addressed several times before. In this issue, poppy and geranium milk pitchers were incorrectly identified as creamers and a polar bear lemonade pitcher was sold as a water pitcher. Again, always look at a piece carefully to determine if it is as described.



Show & Tell pieces continue with a yellow pansy nut dish and purple poppy tea strainer (both of which are RB but are either marked only Germany like the variant rose bowl or not marked at all), an Olde English saying creamer, a hat pin holder featuring small babies I have never seen before, and an Art Deco demi-cup and saucer. The standard blue mark is on the creamer. The hat pin holder has the early blue mark and the Art Deco set sports the early green mark.

Finally, the Wannabe is a ceramic in the RB crow form. As you will see, it was painted in a manner which you cannot unsee. I'll let you ponder whether it's a mystical kookaburra, toucan or something else.

Secretary's Message

By Chris Bartlett

Greetings from Rhode Island where spring still seems to be a confusing and distant season - snow yesterday but then daffodil bulbs are poking up. But by the time you receive this newsletter we should be shedding masks, enjoying beautiful weather, and looking forward to hitting the antiquing trail again.

Thanks to everyone for renewing their 2022 club membership. We currently have 71 members. 11 chose not to renew with the primary reason being that they are no longer collecting.

Please let me know if your address, phone or email address changes so that I can update my records.

Editor's Note: By the end of the membership drive, we had 71 of 82 memberships renew. That is an encouraging 87% - especially considering all that is going on in everyone's lives and the world!

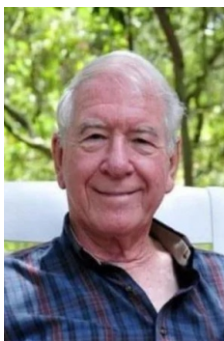
In Memorium

By Gregg Thacker

Randall Robart of Marshallville Ohio passed away June 7, 2021 at the age of 64. An art teacher, he had been a club member since 1999. His Obituary is available here: <https://www.the-daily-record.com/obituaries/pwoo0028661>



Whitney Newland of Santa Barbara California passed away Jan 15, 2022 at age 91. He had been a club member since 2001. He and his wife Judy attended a couple of conventions but he was mostly known on the West Coast for his passion for Wave Crest, both as a collector and a dealer. A very kind and pleasant gentleman. Alan & Janet remember meeting Whitney on their first trip to Tettau with Mary McCaslin where he was joined by friends Roger & Joanne Lundquist. His Obituary is available here: <https://www.independent.com/obits/2022/01/25/whitney-harry-newland/>



Kind of April Fools?

By Kat Thacker

This set of pansy plates don't really qualify as wannabees, as they're brand new. I think they're more "inspired-by" or just good, old-fashioned copies! But just in case you wanted to set a lovely Spring luncheon table with flowers, here you go. Perhaps using your vintage RB pansyware was not worth the risk when one chip would make you terribly sad. Or you don't have quite enough plates to serve tea sandwiches and petit fours to the aunties. This is your answer! At \$60 for a set of four, they're most likely way dearer than the original RB plates would have run back in the day, but at least you can get that festive look w/o months of searching on eBay!



Please print, clip, & add to your 2021 Roster Book

Member Updates

Sandra Baran Listed a new cell phone 570.590.4190

Paul Day Listed a new cell number 309.339.4395

Dorothy Deibert Listed a new cell number 201.956.7561 and new email: evaguz@verizon.net

Vicki & Jerry Fischer Updated their address from 8194 City Road I to 8194 County Road I

Gloria & Robert Griffith Have a new email: gevalenti@ameritech.net

Phillip Mays Listed a new cell number 424.441.9566

Judith & Bernard Newman Updated their apartment number from 1004 to 2706

Phyllis Picklesimer Has a new address: 103 Breezy Meadows Road, Monticello, IL 61856

Sam Pimm Listed a new cell phone 603.203.7517 and email: SamPimm@outlook.com

Editor's Message

By Kat Thacker

Greetings fellow RBCC members.

It's officially Spring, even though it might not exactly look like it where you call home. We're still having gray, sleety days and cold temps at times...but it is Michigan, after all. This is usually the drill until mid-May! Thankfully the robins are out, the snowdrops are blooming and neighbors are finally taking down their Christmas decor. We're SO ready for some time out in the sunshine!

You are currently reading the first-ever, online-only edition of our club newsletter! How exciting!!!

There are many benefits to making this the BEST way of getting club news to you from now on...

We're saving trees, which is always a good thing. Issues are formatted in single pages so they can easily be printed as hard copy if you prefer that kind of thing.

We are able to make all the links live in this format, so you can just click away to get additional information. Forget all that copying and pasting nonsense.

It's so much easier to zoom-in to see all the photographs enlarged. We're using great quality, higher resolution pics whenever possible so you can actually see all the details up close.

There is no limit to the number of pages (no puzzle to figure out 4-page signatures, or fit everything in smallest size possible to save money).

Everything is full-color now. Again, in the past we tried to keep just a limited number of pages in 4/c and ran everything else in b&w to save \$\$\$.

Nearly all the newsletter costs have been eliminated. We were concerned the last few years about supply-chain problems for paper, as well as rising postage rates.

The time needed to get an issue together is shortened.

And noting that we have unlimited pages available should be encouraging you to send in something to share with fellow members. One of our newest members Michael Singer sent in some great photos of his newest RB passion, as well as a story about a crazy road-trip to pick up a carload of lobsters! We always look forward to hearing from all of you out there.

Many thanks to Wib Beachy for more interesting pieces from his collecting adventures. It's always exciting to see those super-rare items not found anywhere else. And thanks to Jim Lapp for his contribution of the unusual demitasse.

Let's hope that with the warmer weather and the easing of the plague that we'll all be able to get out there and experience some proper live antiquing. It's been WAAAAAY too long, and we've been missing the thrill of the RB hunt! Be well, everyone.

Newsletter Submission Deadlines

- Sept 1 for Autumn Issue
- Nov 1 for Winter Issue
- Mar 1 for Spring Issue

Online RB Shopping

Tired of Facebook drama, social media "news", or your daily Wordle? Why not spend time shopping for RB or looking at recent RB sales! A few recent sales are shown later in this issue. But you can look at what is for sale **right now**, and past sales, by using any of the links below - happy shopping!

LiveAuctioneers: <https://www.liveauctioneers.com/search/?keyword=royal%20bayreuth&sort=-relevance&status=online>

eBay: https://www.ebay.com/sch/i.html?_from=R40&_trksid=p2380057.m570.11313&_nkw=royal+bayreuth&_sacat=0

Ruby Lane: <https://www.rubylane.com/search?db=&q=bayreuth&sb=1>

Website News

By Gregg Thacker

Happy Spring RB fans! Welcome to the first online-only newsletter. We have worked hard to make the transition as seamless as possible. You can read online or print as needed to save and enjoy! This newsletter joins all past newsletters available to you on our club website.

We are seeing steady traffic on our website and Facebook page. If you have a Facebook account be sure to search and join "Royal Bayreuth Collectors Club". We do share some tips and tricks there (but not the extensive content available to paid members on our website). Happy hunting at all those Summer markets!!!

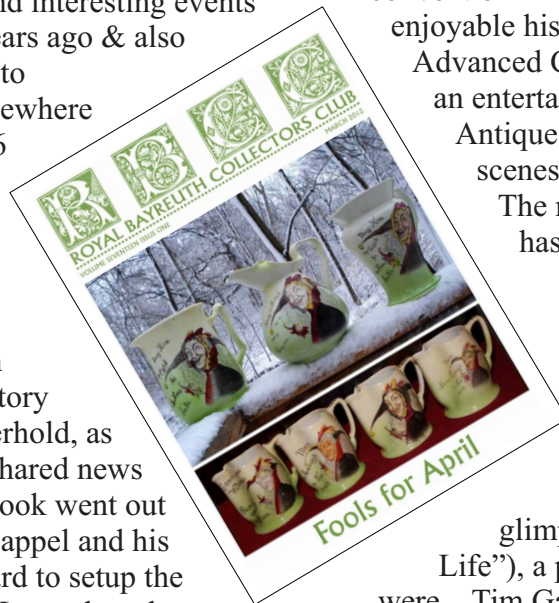
Looking Back

By Gregg Thacker

Let's open our RBCC history books to way back when! Below are highlights and interesting events from the past. Ironically 10 years ago & also 15 years ago we were heading to Pittsburgh for convention! Elsewhere in this issue we include a 1976 newspaper clipping with a historic perspective of our favorite porcelain.

10 Years Ago (March 2012):

"April Fools" was packed with jesters! Lots of stories and history from Kat, Sandy & Chuck Heerhold, as well as Karen Church. Mary shared news that the publisher of her next book went out of business. President Alvin Cappel and his Wife Roberta were working hard to setup the convention in Pittsburgh. Jim Lapp shared an interesting comparison of "identical" Devil & Card pieces in his article "A Matter of Three".



15 Years Ago (March 2007): Cathern James provided an encyclopedic story about RB shoes with many helpful photos. Sandy Heerhold adopted the Presidency and was working hard to arrange the convention in Pittsburgh. Judy White provided an enjoyable history in her "Musings from an Advanced Collector". Becky Conrad provided an entertaining story: "Confessions of An Antiques Dealer (or what goes on behind the scenes in an antique dealer's crazy life)". The new website was finally launched and has been flying ever since!

25 Years Ago (March 1997):

Member William Sabin wrote and extensive review of hand painted ivory pieces and provided a comprehensive list. Several letters from members offered a glimpse of hunting for RB IRL ("In Real Life"), a pleasant reminder of how things were. Tim Gaudet offered some interesting information about numbers used to identify RB. Plans were coming together for the convention in East Syracuse NY. A fun read!

RBCC Treasurer's Report (12/31/2021- 3/30/2022)

By Steve Bartlett

Checkbook Balance as of 12/31/2021:.....\$4,912.37

RECEIPTS

Membership Renewals	\$2,010.00
New Members	60.00
Donations'	\$60.00
Total Receipts.....	\$2,130.00

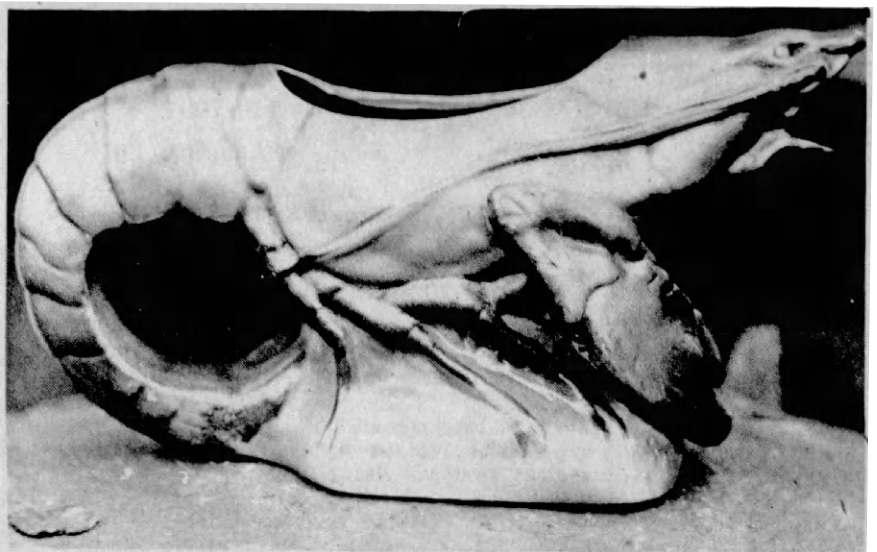
DISBURSEMENTS

Secretary Expenses.....	\$28.85
Images In Ink (Winter Newsletter)	\$936.80
Total Disbursements	\$965.65

Checkbook Balance as of 3/30/2022:.....\$6,076.72

Flashback - The Sunday Dispatch, Moline Illinois Sept 12, 1976

Editor's Note: Yes, we're aware that neither of the two creamers shown in this article are actually Royal Bayreuth. The dapper billy goat is Schafer and Vater, while it's unclear just who made the creepy, angry-looking lobster. Some of the copy is incorrect based on what we know "these days" about RB. But it is amusing to look back and see just what was being told way back in 1976 by earlier collectors. You have to love the line "THE ROYAL BAYREUTH factory turned out pitchers which deviated from the normal", don't you???



Royal Bayreuth porcelain was a popular ware imported from Germany around the turn of the century. Illustrated are two creamers, a dressed-up Billy Goat, at right, and a red lobster with a

mother-of-pearl inward glow. Neither piece is marked with the German company's back stamp, yet these two pitchers are similar to the products produced by this famous firm. (Dispatch Photo)

Royal Bayreuth continues to be sought by china collectors

By MR. AND MRS. ROBERT SWEDBERG

Royal Bayreuth...what a regal sound, descriptive of a queenly type of porcelain. This ware was made in Teltau, Germany, as the 1700's terminated, and in the late 1800's and early 1900's, it found favor in the United States. Most of that available in this country today dates to the turn of the century.

Illustrated are two pitchers, a Billy Goat dressed in a manish manner, and a vivid red lobster with a mother-of-pearl inner luster. Products such as these were made and carried the Royal Bayreuth label, but these are not marked and so their owner does not call them by this noteworthy name. Their color and the quality of the workmanship do indicate they are well crafted, however.

THE ROYAL BAYREUTH factory turned out pitchers which deviated from the normal. Perhaps because some religious groups disapproved of playing cards and the gambling associated with this pastime, a china pitcher was made to resemble cards joined together with a leering horned devil forming the handle. This should serve to warn gamblers in what direction they are headed!

CONCH SHELLS, tomatoes and

ANTIQUE ECHOES

strawberries were made as creamers. A clown with bright red and a face forming the spout, a cat handle, a cow or a moose are some of the other pitchers this ceramic plant turned out. In addition to unique shapes, there were also types available with pictures depicted on the surface. Hunting scenes, ladies looking languid, flowers, country settings, and animals were created.

THE SUN BONNET Babies were pint-sized children drawn in such a manner that their large hats completely concealed their faces. Therefore, only a bonnet is seen to suggest a head.

There is a dispute as to who created these "Holly Hobby" type darlings of the early 1900's. Eulalie Osgood Grover wrote Primers which told of their adventures and Bertha Corbett did the colored illustrations.

Mr. Bernhardt Wall claims he was the originator, and yet other signatures have been found on their likenesses. One author states that the oldest such illustration she could find was dated 1887. In addition to readers for tiny tots, prints for framing, post cards, and china were decorated with

the children.

Royal Bayreuth made cups and saucers, plates, trays, bowls, mugs, boxes, pitchers, match holders, and vases which depicted these toddlers working at various tasks as the childhood game-song suggests, "This is the way we wash our clothes...so early on Monday morning." Tuesday iron, or on other days sweep, mend, mop, or worship; but there could be fun scenes too, such as the moppets fishing or caught in the rain.

THE MAJORITY of the Sun Bonnet Babies china seems to be Royal Bayreuth in origin.

Considered outstanding is the "Rose Tapestry" created by this firm. It resembles cloth woven into the china, hence the name. Dresser accessories such as hat pin holders, hair receivers, covered boxes, powder boxes, or trays were produced as well as flower pots and urns.

For the table there were such items as pitchers, creamers, bowls, chocolate pots and cups. There are china collectors who specialize in Rose Tapestry which now is expensive to purchase, but then, all the company's wares are sought, including their odd shaped pitchers such as the two illustrated, and all have a good price on their heads.

Mistakes in Describing Pieces

By Wib Beachy

Three such pieces are shown in this issue. First is the peach Poppy milk pitcher (incorrectly described as a creamer) shown with an actual creamer of that series.



Second is the Geranium milk pitcher (also incorrectly described as a creamer) pictured with a Geranium creamer.



Third is the Polar Bear lemonade pitcher (incorrectly described as a water pitcher) shown with the water pitcher, milk pitcher, creamer and variant-style creamer of that series. Be careful and take your time in looking at a piece, no matter what its description may be. Mistakes often occur, for which a discerning eye can be rewarded!



Show & Tell

By Wib Beachy

There are five pieces for Show and Tell. The first is a yellow Pansy nut bowl with the word "Germany" stamped on its bottom.



The second is a purple Poppy tea strainer, which is unmarked. These first two are RB, even though they were not designated as such with other marked RB pieces in two separate auctions.

The third is a creamer featuring an Olde English saying: "No tongue can tell, no heart can think what joy it is to have a drink". Saying pieces are so whimsical by their very nature!



The fourth is a scenic hat pin holder featuring small babies by a fire I have never seen before. It has an early blue mark.

The fifth is an Art Deco demi-cup and saucer set with a design and colors typical of that style.



Rarities

By Wib Beachy

Eight pieces or sets in this category are presented for your viewing pleasure. The first is the Stag & Doe miniature watering can -- a piece I've never had before. Once again, the molding, colors, and finish are what you would expect from Royal Bayreuth.



The yellow plum as well as cucumber salt and pepper sets rarely appear. The detail in the molding for both sets is remarkable. The colors and finish are superb.



The second is a scenic peacock fruit cup. While its size fits its function, the graphics displayed on its inner surface give it a lighter and more diminutive appeal. I have not encountered this piece before.



The Man in Gondolier plate is another first for me. This series was discussed last year. The black and green colors give it an eerie feel, even with the decorated gold rim.

Next is the variant rose bowl I picked up for my other daughter, Laura a/k/a Daughter Dearest, some time ago. Marked "Germany" on its bottom, its mold, colors, finish, and weight make it RB in my opinion. It is the only one of its kind I have seen in more than 30 years of collecting.



Last, but certainly not least, is the Imperial Owl stamp blotter -- one of the original 30 pieces produced by the Art Department of the Tettau Factory. The distinctive Kunst-Abteilung mark is found on its bottom. What makes this piece even rarer is the original paper label affixed next to the mark as well.



Daughter Dearest is also the beneficiary of the silver Rose Tapestry pitcher I recently acquired. While I'm not a big fan of Rose Tapestry, the silver variation gives a subtle elegance to the series I find attractive. It is a good example of Rose Tapestry to have.



Three of My Crown Jewels

By Wib Beachy

Headlining the crown jewels of my collection is the Lady in Flowing Gown. She has a recessed interior. However, I believe her to be a decorative piece only. The cream, blue and soft pink hues of her gown with its design give the lady an elegance befitting her facial and other bodily features. Her mark is the variant blue one.



No lady should be without a cat. My Lady has two. The first is the free-standing white cat with jeweled eyes and brush whiskers sold to me by Jim Davis. It was one of his favorite pieces as well. It has no function beyond that of decoration. Its mark is on its belly.



The second cat is black and has both a top and bottom. Its full feline shape is outlined on the bottom, where the mark is found as well. A small mouse is molded as a handle to its top -- a very nice touch to make this piece "eye candy" or the cat's meow while serving as a covered sugar or pin dish.



Butterflies and Related Delights

By Wib Beachy

Another highlight of my submissions for this issue are photographs of the butterfly and related pieces I've collected for my older daughter Jennifer over the years. There are three different styles for the butterfly: the open wing, the closed wing, and the perched. Separate photographs of the water pitcher, milk pitcher and creamer groupings appear for each of these styles. The toughest to find was the open wing water pitcher.



In addition to these groupings, I've found two bowls with scenic butterfly decorations. One has a Fantasia-like rendition of a butterfly against the sun on its rim.



The other features a Monarch butterfly against a web complete with spider on its entire interior surface. The detail and colors of this piece are incredible.



Continued on next page

Butterflies and Related Delights

(Continued)

Two other pieces compliment the butterfly series. The first is the moth creamer. While of the same mold as the butterfly, the moth features a different color scheme.



The second piece is the scenic dragonfly low pin dish or ashtray. The glazed finish highlights the subtle yet strikingly detailed dragonfly in its natural brown and green splendor against an iridescent background.



Wannabee

By Wib Beachy

Here is the Wannabe for this issue. It is made of ceramic, not porcelain, in the RB crow mold. Its coloration is more than bold to behold! Whether or not it is supposed to be mystical, it certainly qualifies as such. It is not your ordinary, everyday crow, that much is certain.



Notable eBay Sales

By Gregg Thacker

Interesting pieces sold from Dec 22, 2021 thru March 5, 2022. Rounded to nearest whole dollar. Final sale price does not include fees or shipping. Many listings did not sell, while others sold at very low prices. Still looks like a good time to buy!!!

Children's Tea Set for 4 - "RING A ROUND THE ROSY" (304291971166)	\$375
Fabulous Portrait "Horn of Plenty" Gold & Pink (265474255292)	\$325
Devil and Cards Ashtray and Match holder-w/Striker, Dings and Minor Damage (134004240685)	\$265
Lobster Cabbage, Leaf Bowl & 5 Plates Set (324967342025)	\$260
Devil and Playing Cards Candy Dish Blue Mark (275169639552)	\$210
Spikey Shell Gravy Boat & Deponiert Undertray (401497291627)	\$198
Art Nouveau Deco Lady Chamberstick (294766527359)	\$160
Reticulated 9 1/2" Vase Cows in Pasture BM (165245066700)	\$129
Chimpanzee/Monkey Wall Hanging Match Holder (324973565461)	\$125
Red Poppy Hat Pin Holder BM (303902174812)	\$120
Robin Pitchers – Set of 3 - Water, Milk, & Creamer (265495804929)	\$120
Belmont Bavaria (6)- 6 1/8" Bread Plates Marked (175031367979)	\$9
Creamer, Scenic Cows, Pastoral (255355719435)	\$8



By Gregg Thacker

On a personal note, there is a seller on Live Auctioneers that sold us a very disappointing piece with hidden damage. They only have a 77% 1 star rating and over 10% 1 or 2 star rating. We will never buy from them again and will not list their sales below. Buyer/Seller beware!



Polar Bear Water Pitcher (Feb 26, 2022)	\$1,300
3 Piece Lot Rose Decor Toothpick Holders (Feb 26, 2022)	\$350
D&C Lidded Stamp Box (March 17, 2022)	\$325
Tea Set (Feb 12, 2022)	\$160
Pair of 10" Signed Royal Bayreuth Plates (Jan 23, 2022)	\$125
14 Piece Set – Poppies, Lobsters & More - Sell Price Will make you cry (Jan 25, 2022)	\$125
Three Royal Bayreuth Sunbonnet Babies Toothpicks (Feb 15, 2022)	\$110
Figural Pitchers and More (Feb 11, 2022)	\$100
Sunbonnet Babies 6 Piece set of Creamers (Jan 20, 2022)	\$90
Set of 4 Unusual Toothpicks (Feb 15, 2022)	\$90
Children's Set with a Few Non RB (Feb 15, 2022)	\$90
Set of 6 Hat pin Holders w/Numerous Hat Pins (Jan 15, 2022)	\$70
Green Covered Box with Pub Scene (Jan 31, 2022)	\$10

New Member & Enthusiastic RB Fan!

By Gregg Thacker

New member Michael Singer recently shared photos of his china cabinets, recent purchases, and some wanted items. He inherited his Grandmother's china (ROB 30 pattern). To create a full service for 12, he is looking for 2 dinner plates, 3 coffee cups, one coffee saucer, a lid to the butter dish, and a salad plate (he is already familiar with Replacements Ltd). Mike knows that dinnerware is a secondary focus of the RBCC, but it doesn't hurt to ask! Interestingly, that china inspired him to now collect tomato and lobster pieces....



He shared a recent adventure to gather about 60 pieces 1,000+ miles from home (wisely not trusting shipping and handling). He and his partner drove from Florida to Pennsylvania in a January 2022 blizzard (being cautious about Covid) to bring the treasures home. As he says; "You can't keep a devoted Royal Bayreuth collector down!". I think we can all relate, as we have all done some amazing (thrilling?) things to find and gather our favorite porcelain!

Michael is also looking for 4 lobster dinner plates and 6 lobster salad plates to upgrade his lobster collection to service for 12. Please contact Michael (cell: 206-794-3579 or michaelasingersr@gmail.com) if you have items to sell or simply wish to welcome Michael to the RBCC!



Bonus Poster - Beautiful Bayreuth Butterflies

