



ROYAL BAYREUTH COLLECTORS CLUB

VOLUME TWENTY NINE ISSUE THREE

AUTUMN 2024



Sweet Endings!

ROYAL BAYREUTH COLLECTORS CLUB

www.royalbayreuth.org

PRESIDENT

Wib Beachy

251 Hickory Hollow Road
Somerset PA 15501
814-443-2796

VICE PRESIDENT

Paul Stratman

7814 East Mackenzie Drive
Scottsdale AZ 85251
602-499-3234

TREASURER

Steve Bartlett

1320 Waterford Drive
East Greenwich RI 02818
401-885-5889
dufferdoggri@gmail.com

SECRETARY

Chris Bartlett

1320 Waterford Drive
East Greenwich RI 02818
401-885-5889
chrisbartlettri@gmail.com

EXECUTIVE BOARD OF DIRECTORS

Chris Bartlett

1320 Waterford Drive
East Greenwich RI 02818
401-885-5889

Sandy Heerhold

2011 Eagle View Road
Hendersonville, TN 37075
630-466-7601

Bob Mazza

111 South Compo Road
Westport CT 06880
203-981-0920

Karen Rublaitus

48 Jerry Circle
Atoka TN 38004
901-233-3945

Myra Sustae

2613 Springmill Rd
Findlay OH 45840
419-424-0178

EDITOR

Kat Thacker

311 West Drayton
Ferndale MI 48220
editor@royalbayreuth.org
248-545-0392

HISTORIAN

Bob Mazza

111 South Compo Road
Westport CT 06880
203-981-0920

3-29-2023

Editor's Message

By Kat Thacker

Greetings to all our RBCC friends.

Happy Autumn! With Halloween just days away, it seemed like the perfect time to showcase our black animals with a cover shot. I personally love all the odd-colored animals that RB produced sporadically, but the black ones just scream Halloween!!!

This is the last club newsletter for US as Editors. Laura Beachy will be taking over the newsletter duties starting with the Winter issue. Gregg and I will be continuing to share things via the Facebook page and email blasts. We've enjoyed getting interesting things from our members as well as finding RB-related photos and write-ups ourselves. Sometimes it's been tough finding "newsworthy" items (especially with our many expert collectors) but hopefully you've seen something new or different, and learned a bit about our favorite porcelain over these many years...

This time of year makes us extra nostalgic for our past wonderful RBCC conventions. Traveling in the autumn always made it extra special (so many beautiful drives through the fall colors). We truly miss seeing all our RB friends and enjoying each other's company (& expertise) at these annual events. The many things we learned over the years were priceless. Miss all the unusual RB discovered by fellow collectors and the room to room sharing. They were definitely cherished times.

We're wrapping up the last pages with personal favorites from our collection. It seems like a fitting way to close out our duties as Editors. Take care and have fun on your continuing search for more wonderful Royal Bayreuth treasures!



This black & red rooster creamer is one of Gregg's favorites. We purchased it on eBay from a very nice lady in Canada. Funny how the souvenir marking is from Detroit, so he migrated up North, then he flew back home to us in Detroit! We actually like the souvenir markings on our RB.

From Our President

By Wib Beachy

Hello again fellow RBCC Members,

How quickly time flies! I can't believe that it is Fall already. However, with the colorful leaves, the unmistakable chill in the air, the baseball playoffs as well as football at all levels, not to mention the annual regional Fall foliage arts and crafts festival in which my wife and I have been participating vendors for the past 35 years, there is no doubt we are indeed in Autumn for 2024. Winter is literally just around the corner.

As detailed in the Spring Newsletter, this is the final issue of the Club's Newsletter that will be published by Gregg and Kat. I again want to thank them for their years of service in making the Newsletter the very fine product it has become. Daughter Dearest has a real challenge in following them to maintain the quality of the Newsletter, even though it will be in a smaller, more simplified format, beginning with the Winter Issue.

For this Issue, I have gone to great lengths in garnering a large number of exceptional RB pieces that have been photographed for your viewing pleasure. Multiple online auctions and secondary market sales since the Spring Issue have allowed me to acquire these pieces at reasonable cost. There is a silver lining to the overall drop in market value after all. Before the drop, I would have been able to purchase only a few of them.

Featured are rarer color variations of the Chick, Closed Wing Butterfly, and Snake water pitchers in addition to a black Frog creamer; discovery pieces including larger and smaller decorated egg cup vases, scenic floral wall match holders, another Kunst Abteilung or Art Department table lamp, a scenic yellow rose chocolate pot with silver overlay, and, perhaps, a dog perfume bottle and dog ink well; the rare Elephant candlestick holder; two notable pieces of the Corinthian series; a wide array of cup and saucer sets; a powder blue pitcher set from France with a complementary vase displaying a different and seldom seen mark; two tall matching bird vases with a covered urn; a smaller scenic birds pitcher with lid; three Sunset pieces of unusual size and color; a scenic saying tea set; and a seasonal cylinder vase with hand-painted blue birds and cattails.

Enjoy them as I do. I'll see what more I can find for the Winter Issue!

Winter Newsletter Submission

Deadline: January 15th

Contact Laura Beachy:

lebeachy@gmail.com

Website News

By Gregg Thacker

Greetings Royal Bayreuth Fans!

While this is the last newsletter that Kat & I will produce, we still have a great deal of responsibility for club info.

We will continue to run the website, members list, and send email blasts (including distribution of the digital newsletter going forward). We will also continue managing the RB Facebook page - which occasionally has some interesting posts.

As you know, the website includes all 111 past newsletters (from our first issue in March 1996 thru this issue). And some day, if we have any 'spare time' we will update Roberta's newsletter index which is available at the link below:

https://www.royalbayreuth.org/member/Newsletters/nl_index.pdf

Kat & I might surprise you with future RB graphics, stories, or other content if time allows, and would encourage everyone else to do the same!

Autumn always reminds us of getting together with RB family and we miss that. No telling if/when that will ever happen again, but until then please enjoy the RB online historical archives!

Enjoy your Autumn!



Secretary's Message

By Chris Bartlett

Welcome fall! This is the perfect time to enjoy the apple and maple leaf creamers, the squirrel and oak leaf creamers, and the turkey and farmer scenic pieces. There is still time for outdoor events and flea markets and the continued hunt for that perfect piece to add to your collection. I know our curio cabinets are crammed full, but there always seems to be room for just one more piece....

This newsletter marks the end of Kat and Gregg Thacker's 17 year run as editors. They have produced an amazing collection of newsletters over the years. The clever cover designs were always amazing and fit in with the time of the year. From the printed and mailed copies to the digital version they have kept the members aware of all the club has to offer. We are so grateful for their talents and dedication to the club and I know you join with me in thanking them again for a job well done. Bravo!

We are very pleased that the newsletters will continue under the direction of Wib Beachy's daughter, Laura. The newsletters will again be distributed through the website and email. Thank you, Laura, for stepping up to continue this important job!

We currently have 72 memberships in the club, representing 30 states.

I want to keep our club records up to date so if your address, phone, or email has changed please notify me at Chrisbartlettri@gmail.com or 401-885-5889. Thank you.

Enjoy this newsletter and happy collecting to everyone!

The Northeast Micro Mini Royal Bayreuth Convention

By Chris Bartlett

Five Royal Bayreuth Club members representing New Hampshire, Massachusetts, and Rhode Island met for a "micro mini convention" in June.

Well, meeting for lunch would be a much better description! Judy Stockwell, Harriet and Jerry Lavine, and Chris and Steve Bartlett met at the Olive Garden restaurant in Nashua, New Hampshire for a delightful get together.

The last time we had all been together had been in the fall of 2018 so there was lots of catching up to do. Lots of great stories and Royal Bayreuth reminiscing made this a wonderful time and we hope to do it again.



Photo from left: Jerry Lavine, Judy Stockwell, Harriet Lavine, Chris Bartlett, Steve Bartlett

RBCC Treasurer's Report (04/30/2024- 10/31/2024)

By Steve Bartlett

Checkbook Balance as of 04/30/2024:.....\$4,199.35

RECEIPTS - None

Total Receipts.....\$0.00

DISBURSEMENTS

Surety Insurance.....\$187.00

Web Expenses (Annual)\$520.00

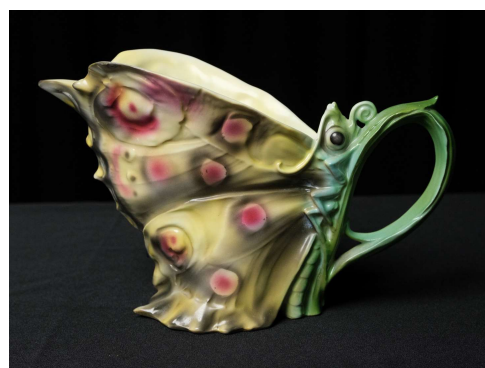
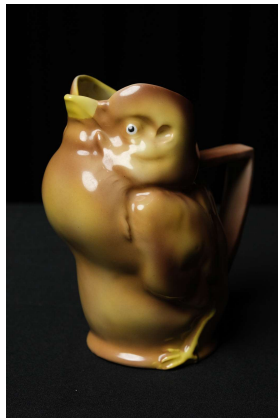
Total Disbursements.....\$707.00

Checkbook Balance as of 10/31/2024:.....\$3,492.35

Show and Tell

By Wib Beachy

Leading off Show and Tell are rare color variations of three figural water pitchers of the Chick, Closed Wing Butterfly and Snake series and one creamer of the Frog series. The Chick, as shown, is as brown as it is yellow in stark contrast to the usual brilliant yellow. I have dubbed this piece as the “Dirty Bird” of my collection.



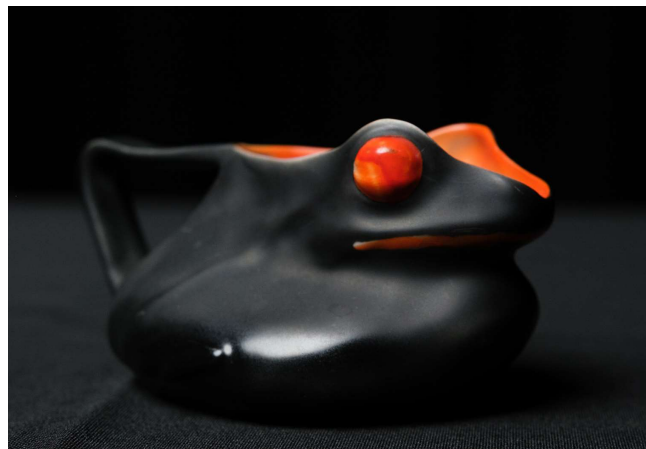
Similarly, the Closed Wing Butterfly has a muted color scheme from that ordinarily used. There is even a more muted version I have seen as well.

Both the Chick and Closed Wing Butterfly were among several pieces I purchased in the collection sold by Woody Auction on August 23, 2024.

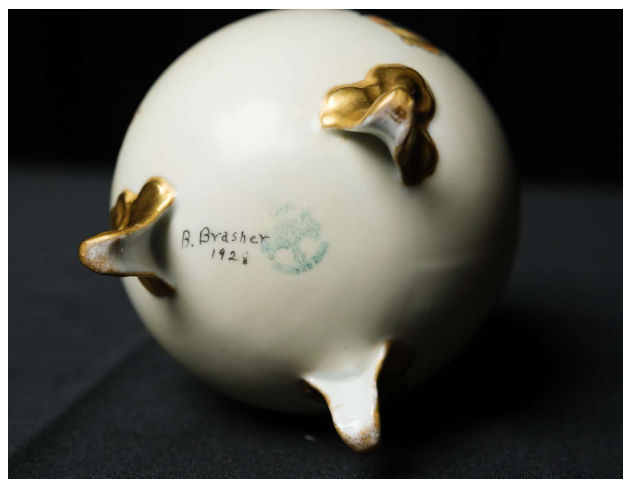
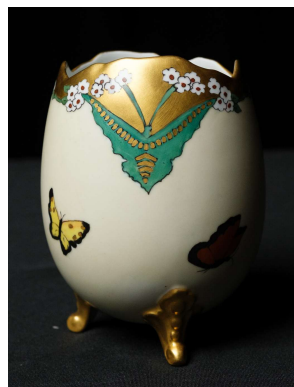
The Snake appeared on eBay about the same time. It is the second one I have ever encountered with the color set pictured. The combination of purple iridescent paint with pink fangs as well as mouth and yellow eye highlights over the light gray and soft brown body is much different from the brighter and bolder colors usually employed for pieces of this series.



The Frog appeared in a Boise, Idaho online auction which ended August 2, 2024. I believe it is the only black one I have come across. I almost croaked (pun intended) over what I had to pay for it, especially in today's market.



Next are several discovery pieces I was fortunate enough to acquire. My favorite is the large scenic hand-painted egg vase featuring colorful Art Deco butterflies against a cream background. Not surprisingly, it will be a gift to be added to my daughter Jennifer's collection. As shown, it bears the green export mark with the artist's name, B. Brasher, and year of painting, 1928.



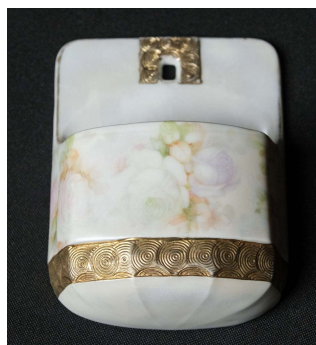
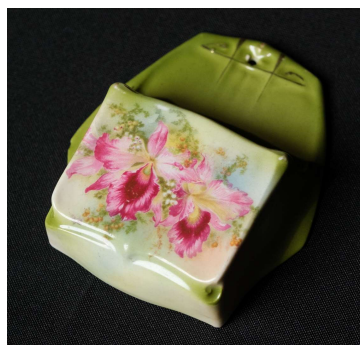
Continued on next page

Show and Tell (Continued)

Its smaller relative is cobalt blue in color with roosters in the center of a gold band. The standard mark appears in gold as well on the bottom. Both vases were purchased through separate online auctions on eBay and HiBid.



Two scenic floral wall match holders caught my attention. They were in the same online auction on HiBid. One is the orchid that I had not seen before, even though I've had other scenic orchid pieces. The other is the soft-colored multi-rose display with gold accents. Both have the standard blue mark.

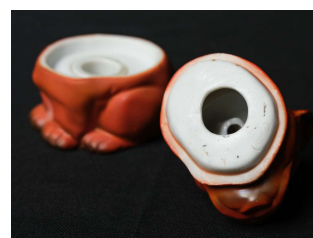
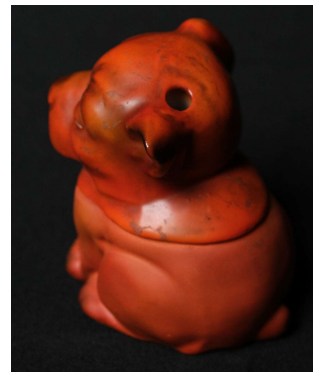


No Issue would be complete without at least one Kunst Abteilung or Art Department offering. For this Issue, that piece is a 23 ¼ inch table lamp with standard colors and decoration on its lower portion and base. Having the appropriate mark on its bottom, it joins two other lamps I have of this series.

A stunning scenic yellow rose chocolate pot in high gloss finish with silver overlay follows. It was an eBay acquisition. It measures 8 ¾ " tall, 7 ½ " wide from spout to end of handle, and 5" deep. I would love to find the cups and saucers to go with it.



And then there are the two figural pieces which were included as one lot in the Woody Auction mentioned earlier because of their "questionable" marks. They are the dog perfume bottle and red dog ink well I find nothing amiss with their marks. I believe them to be RB, not Wannabes.



Continued on next page

Show and Tell (Continued)

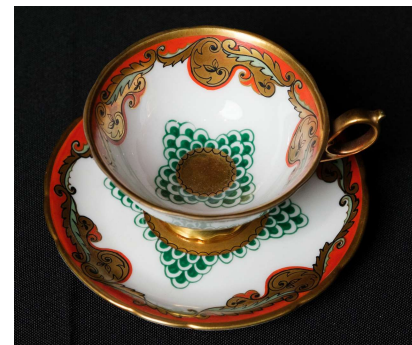
The rare Elephant candlestick holder was a further eBay purchase. It has the variant blue mark on its underside. It appears in Mary's Book II on Page 136, Item No. 787.



Two uncommon Corinthian pieces crossed my path as well. One is a gargantuan lemonade pitcher measuring 8½" high and 8" long. I picked it up at an outdoor show for \$20. The other is an orange demi-cup and saucer set, bought through Etsy for even less.



A number of other cup and saucer sets are also included. From 1913 and 1914 are two children's Dolls' Tea Party sets originally sold through Emery, Bird, Thayer & Company of Kansas City. From the Art Deco period which followed comes the colorfully vibrant demi-cup and saucer set.



A devil and dice demi-cup and saucer with the green export mark made this Issue because of the saucer. It differs in both shape and decoration from the usual saucer for this series. Sharing the same mark is a scenic poppy tea cup and saucer. Closing out this category is a powder blue demi-cup and saucer set with gold frieze band and gold standard mark. It was part of a three-piece set which came from France.



Continued on next page

Show and Tell (Continued)

The other two pieces of that set were identical pitchers with the same accents and mark. A larger vase with the same coloration and similar frieze bands but with a different mark already had surfaced. The mark, seldom seen, features a crown as opposed to a coat of arms.



An earlier Woody Auction on June 22, 2024 had two 11 ½ “ vases and a matching 7 ½ “ covered urn featuring hummingbirds and parrots which appealed to me. While not marked, their design and forms are regarded as ones attributable to RB. I have a number of other pieces in this series.



My bird fetish continued with a 6” scenic birds and floral pitcher with lid. It has the standard blue mark. The birds are similar to the ones depicted on the Hoopoe series pieces.



I also have liked collecting scarcer pieces of the scenic Sunset series. Since the Spring Issue, I added three which are worthy of mention. They are a larger orange bulbous pitcher standing 4 ½ “ high and 7 ¾ “ long as well as a miniature blue two-spouted vase and three-opening toothpick holder, both of which feature the boat on the lake pattern. The pitcher is notable for its size; the vase and toothpick holder are notable for their color.



Continued on next page

Show and Tell (Continued)

A very nice tea set, consisting of teapot, creamer and sugar, with the sayings “For truth I may this sentence tell, No man dies ill that liveth well” and “Drink like a fish – water only”, was too much for me to resist. The teapot was the first of its kind for me. The pieces one typically sees for this series are the creamers, sugars and pitchers. There are various other sayings as well.



Last, but not least, is the seasonal cylinder vase painted by L. Archer with a scene of swooping blue birds from cattails in a marsh. Measuring 9 ¼” tall, it has the standard blue mark. It fits in nicely with my other similarly shaped seasonal pieces which have appeared in prior Issues of the Newsletter.

That's all for now. Stay safe and enjoy the time which passes until the email arrival of the Winter Issue.



Fun eBay Find

By Kat Thacker

There is so much RB for sale online that it is hard to keep track of it all! This was an unusual tapestry finish with the polar bear decal. The “facts” from some listings can be quite entertaining. The piece below includes the description verbatim from the seller. Happy (careful) shopping!

“Royal Bayreuth Arctic Polar Bears RARE Small Painted Pitcher Collectible Asking \$110 This Royal Bayreuth small painted pitcher is a rare collectible that would be a great addition to any pottery and glass collection. Featuring a delightful Arctic polar bear design, this multicolored porcelain pitcher is perfect for serving beverages or just for display. The brand and backstamp ensure its authenticity, making it a highly sought-after piece for collectors.

All items are sold used and as is. This item is cracked inside and may have been repaired at one point but it's hard to tell from the outside. The paint on the bears is in fantastic condition. eBay item 355829938187



RB Decorates Grace Coddington's Long Island Retreat

By Gregg Thacker

A Summer 2018 Architectural Digest story highlights some familiar Royal Bayreuth. It appeared in Grace Coddington's (Vogue's legendary Fashion Editor) Long Island retreat. The story was new to us, maybe others had seen it? Although RB is not mentioned by name (it is referred to as "punchy china") it is prominently featured (along with some crazy Czech Deco animal pitchers) in an interesting story available at the link below.

<https://www.architecturaldigest.com/story/grace-coddington-long-island-home>



Last Word

Favorites from our Personal Collection

By Kat & Gregg Thacker

After 30+ years of collecting we wanted to share some of our favorite RB pieces below. Some have fond memories of where we bought them, how, or from whom. We are still buying - so will hopefully be able to add some new favorites. Happy Collecting!

Lobster Water Pitcher. This was the first piece of RB we ever purchased. Bought at a local auction outside Detroit.



Mouse Creamer. I always thought the mouse was very sweet with his tail artfully tucked and his little paws holding an almond. Definitely NOT a rat, (despite what visitors might say) even with his red eyes.

Lemon & Orange Mustard Pots. Miss-painted as an orange, this is definitely a lemon mold. Both complete with their cap of blossoms, leaves and tiny spoons.



Continued on next page

Last Word (Continued)

Swan/Mallard Ashtray. Even though this piece is always described as a swan, he's actually painted like a mallard duck. Very elegant with it's open wings and rippling water. My favorite part is the tiny frog he's holding in his beak, a tasty morsel for his dinner.



Dachshund Milk. A favorite piece we purchased from McCaslin's Auction at Woody's. Mary & Bob are greatly missed by us all, and it's nice to remember them when we see this pup!

Red Devil Milk. The red devil was a piece we grew up with. My Mom had bought it in her teens while working summers at Goodwill. My sister & I used it for our tea parties when we were little!



Squirrel Milk Pitcher. I saw many squirrels over the years (most WAY out of our price range). The one I most wished for was this color combination of matte gray with cream. LOVE his little tufty ears, and paws clutching a yummy acorn!

Devil & Cards Bowl (with dimensional devil). A magical piece from the extensive D&C series. This was a gift from 2 dear RB friends, so extra special to us.



Sunflower Creamer. This has always been a favorite due to the major detail on both sides. Beautifully stylized with the stem and back of the flower head.



Continued on next page

Last Word (Continued)

Lemon
Lemonade.
A big,
bossy,
beautiful
lemon.
LOVE the
giant size!



Triangle
Ash Tray.
One of the
very few
scenic
pieces we
have. Gregg
loves the
Equestrian
Lady
image!



Devil & Cards Mug. Later limited edition, this is numbered 426/2000. Gregg bought this at a Club Auction. He actually uses this for drinking, and loves being able to do so!



Robin Ashtray. We bought this darling bird from Nancy Rublaitus so it's extra special. The stylization of the wings, tail detail, rosy blush on the chest, and the tiny curled feet are just wonderful.



Brown & Green Shells. These are a bit harder to find than the pearlized white variety. Having grown up visiting Sanibel every spring with our family, we LOVED shelling. These with their more natural coloring remind me of the lovely times spent on island! Still looking for more of these...



Butterflies. We're showing my first butterfly (lavender creamer in perched mold) which I found in an antique mall on our way to a convention. I paid \$20! The closed-wing water pitcher in red, was my most recent purchase at a Woody Auction this year. Still on the hunt (especially pieces with unique colors) if your kaleidoscope (flock of butterflies) is getting out of hand!

