



ROYAL BAYREUTH COLLECTORS CLUB

VOL. 30 ISSUE 1

WINTER 2025

WELCOME TO OUR

Winter Newsletter

Officers

PRESIDENT

Wib Beachy
251 Hickory Hollow Rd.
Somerset, PA 15501
814-443-2796

VICE PRESIDENT

Paul Stratman
7814 East Mackenzie Drive
Scottsdale, AZ 85251
602-499-3234

TREASURER

Steve Bartlett
1320 Waterford Drive
East Greenwich, RI 02818
401-885-5889

SECRETARY

Chris Bartlett
1320 Waterford Drive
East Greenwich, RI 02818
401-885-5889



Treasurer's Report

Balance as of 10/31/24

\$3492.35

No receipts

No disbursements

Balance as of 01/31/25

\$3492.35

President's Message

Brr!!! This winter was a cold one including a night where the outside temperature was minus 27 degrees Fahrenheit. Winter, my least favorite season, was on full display – not just with the bitter cold temperatures but also with the accompanying snowfalls, one bringing more than a foot of snow. From the news it appears my area is not the only one that experienced such bliss. I'm excited to be out of Punxsutawney Phil's shadow and entering into Spring.

This Issue is the first one published by my Daughter Dearest, Laura. While it is in a more simplified format, it retains the substance of what you as Club Members both need to know and enjoy. Articles from you are always welcome for inclusion in the Newsletter. Contact either her or me if any of you would like to submit something you believe would be of interest to the Club as a whole.

For this Issue I have acquired more RB pieces, which have been photographed for your continued viewing pleasure. They include the no longer elusive Squirrel Water Pitcher in both the gray and brown versions;

the Art Nouveau Lady Water Pitcher in the extremely rare blue color variation with matte finish; an equally rare red Frog Water Pitcher; an uncommon yellow Poppy Water Pitcher; six notable pieces of the scenic Men in Boat series; an unusual Sunset vase; two scenic Peacock pieces I had not encountered before; two rare salt and pepper sets for the Alligator and Chrysanthemum series (the latter of which involved my finding the mate to the other shaker I had); a commemorative mug in honor of Queen Victoria; a Shell candlestick holder in the rare multi-color version; a Stag and Doe serving bowl with handles as well as hair receiver on legs; an unusual iridescent Pansy creamer; a small Kunst-Abteilung scarab covered box; a Berchtesgaden vase; and two Red Poppy offerings I believe to be Wannabes, even though one is marked. Hopefully, these pieces will take your minds from the last of the cold and other elements outside.

Stay warm and take care until the arrival of the Summer Issue of the Club Newsletter sometime in late June or early July.

Summer Submissions

Deadline: May 15th
Contact Laura Beachy:
lebeachy@gmail.com

Show and Tell

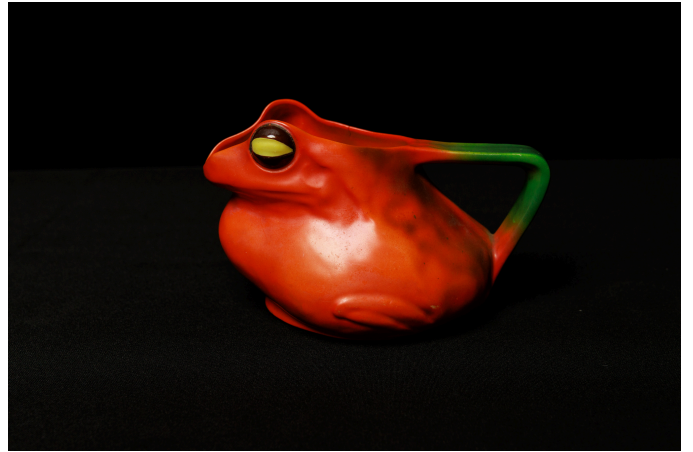
Leading off Show and Tell for this Issue is a piece that had eluded me for over 32 years, the Squirrel Water Pitcher. While it had come up earlier in some auctions and shows, the timing always was not right for me. I had my eye on other pieces and/or my available monies were not enough to secure it. Harold Brandenburg used to tease me by telling me about how he had gotten one for \$10 at a flea market.

Well, I can now report that I have both the gray and brown versions of it, as shown, courtesy of an extensive collection of RB figural pieces, which started to be liquidated last Fall online. I paid far more than \$10 but much less than what this piece had commanded not long ago. As I've said before, there is a silver lining to the current down market.



Next is the Art Nouveau Lady Water Pitcher in the extremely rare blue color variation with matte finish. I was lucky enough to snag it for a very fair Buy-It-Now Price on eBay soon after it appeared. Timing sometimes is everything.

Also on eBay was the very rare red Frog Water Pitcher pictured. It joins its black creamer cousin featured in the last Issue. Together they both catch and keep one's attention.



Rounding out water pitchers for this Issue is the uncommon yellow Poppy Water Pitcher. Like the Squirrels, it was part of another large collection being liquidated online. There were other nice water pitchers, including the Standing Trout, in that collection.

Six pieces of the scenic Men in Boat series follow. Five are of the standard dark gray coloration, while one is the variant brighter green and light blue with pastel coloration. They consist of two creamers, two small matching vases with reverse depictions of the scene involved, a miniature covered pill or pin box, and the Goliathan Lemonade Pitcher.



A further Sunset piece crossed my radar and was captured as well. Its size, shape and different scene were enough for me to want it. The variety of pieces known for this series continues to amaze me.



The scenic Peacock series is one of interest to me, as you can tell from past Issues. Making this Issue are two more pieces: a decorative plate and smaller teapot I had not encountered before. Its detailed scenic design against a soothing background as well as its accents are very appealing.



Two salt and pepper sets in the Alligator and Chrysanthemum series qualified for inclusion. The former came as a set and the latter was completed by my acquiring the salt shaker, thereby mating it with the pepper shaker displayed in the Spring/Summer Issue for last year. eBay was the venue for all of these pieces



On eBay uk I noticed a smaller commemorative mug in honor of Queen Victoria, which I had not seen before. Its earlier Tettau mark is exactly what I expected. Its cost even with overseas mailing was also very reasonable.



While imperfect with repairs, the Shell candlestick holder in the rare multi-color version could not be passed up. Its common iridescent version and less common green version are the ones usually seen. It is the first of this version I have ever seen.



The Kunst-Abteilung piece found for this Issue is a small scarab or beetle topped covered box. It bears the standard mark for an Art Department piece. Its diamond shape is especially nice.



My late friend and fellow Club member, Delbert Highlands, would have wanted the two Stag & Doe pieces on display for this Issue: the family-size serving bowl with handles in the variant coloration for pieces of this series and the hair receiver on legs in the standard coloration.



Their design and finish are so typical of what RB produced for its decorative wares before there was even a separate line of pieces made by its Art Department or Kunst Abteilung. I can't think of another manufacturer producing the quality with warmth found in these pieces, even though one is set in wintertime.



An iridescent Pansy creamer with unusual highlights again reflects the cumulative result of great modeling, painting and finishing by RB. The figural floral series are among my favorites to collect. RB is unsurpassed by any other manufacturer which has attempted to mimic or copy any such series pieces.

The Berchtesgaden vase again showcases the design, colors and finish famous for scenic pieces produced by the Tettau Factory during the later period involved. As noted in an earlier Issue, the form for the vase followed the mold for one of the pieces in the original Imperial Line, produced after World War I. This piece was made 30 years after that.



Closing out Show and Tell are two offerings that I believe are Wannabes, not RB, even though one is marked. The unmarked offering is a Red Poppy creamer and open sugar with tray set, which popped up on eBay uk.



While the creamer and sugar are nearly identical to RB, the tray because of its weight dispels any notion of RB. It is simply too heavy and does not pass the 'feel' test, often performed by Jim Davis, the Club's first President, and taught to me by him.

The other piece, the Red Poppy pitcher, while marked, also is too heavy and does not pass the 'feel' test. Why RB would produce such a pitcher, when it already had a fully figural line in this series, is an appropriate question to ask in raising concern about its legitimacy. Be careful when buying RB, even when it is supposedly marked as such.



That's all for now. I'll see what more I can add to the fold for the Spring/Summer Issue.

Kudos to Daughter Dearest Laura for being able to produce this Issue, albeit late in the season, despite having suffered a broken forearm and wrist while ski-jumping (naturally)!